

STUDIO  
CHRISTCHURCH

In this project students will be engaged in a design research exercise exploring architectural potentials within the proposed Performing Arts Precinct set out in the CCDU Blueprint Christchurch.

## Performing Arts Centre design led research



The Performing Arts Precinct Te Whare Tapere is described in the Central Recovery Plan Blueprint as a major anchor project that will “offer facilities for music and the performing arts, and to act as a catalyst for recovery. The precinct will embrace different sites and will support co-location of organisations as far as is possible”.

“Fostering the arts and creative industries is crucial to building a 21st century international city. The Performing Arts Precinct will catalyse recovery through contributing to community and cultural wellbeing, drawing people into the central city, and supporting local tourism and hospitality. Most of all, they draw people to the city and make it an inspiring place to be”.

In August this year the Christchurch City Council voted unanimously to retain the Town Hall and proceed with the Performing Arts Precinct. So it is timely that we engage with the thinking around this area of the city and this project.

The Performing Arts Precinct is located in the blocks defined by Oxford Terrace, Gloucester Street, Colombo Street and New Regent St. The Arts precinct is a major part of the proposed new fabric of the city adjacent to Victoria Square and the Avon River with connections to Cathedral Square. The Arts precinct is seen as a significant group of buildings, that will include the rebuilt Town Hall, the fully restored Isaac Theatre Royal, a new Court Theatre and

homes for the Music Centre of Christchurch and the Christchurch Symphony Orchestra (CSO), that will create a hub of performance/cultural activities. As such the Performing Arts Precinct and the potential public plaza associated with it is loaded with interesting complexities, not to mention high expectations.

A key complexity is that the precinct adjoins Ngai Tahu land holdings and the Te Puna Ahurea planned to “be a world class centre for celebrating Ngāi Tahu and Māori culture, and acknowledging Christchurch’s place within the Pacific. Te Puna Ahurea Cultural Centre will be a unique, vibrant visitor destination that

supports central city recovery through increased cultural, retail and hospitality activity.

The design and function of the Cultural Centre will reflect New Zealand’s evolving identity, integrate with Te Papa Ōtākaro/ Avon River Precinct, and provide an inspiring and interactive facility to showcase and celebrate Ngāi Tahu, Māori and Polynesian traditions, and performing and visual arts”. The performing arts centre as framed by this design led research project will acknowledge and welcome the presence of Tangata Whenua within the precinct along with the cultural negotiation this infers.



Coordinator:

*Mark Southcombe*

Studio Leaders:

*Mark Southcombe, Rebecca McLaughlan*

*Victoria Willocks & special guests*

VUW Christchurch  
Collaborative Studio

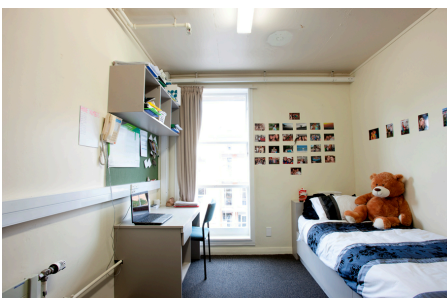
2014

# STUDIO CHRISTCHURCH

VUW Christchurch  
Collaborative Studio  
13 Jan - 5 Feb 2014

Confirmation of VUW enrolments and bookings for accommodation for the Christchurch Studio are now urgently needed. Also in order for us to create a great summer school and learning environment we need to know how many of you are coming. So enrol in SARC 384 or SARC484 now please. Don't wait.

University of Canterbury single room accommodation is available but requires booking directly by each student as soon as practical.



Single UC Room  
\$160 per person per week.

This will be in the Retro accommodation option as we had last year and information on the rooms can be found here:

[https://www.thebookingbutton.com.au/reservations/campuslivingdirect/83638?](https://www.thebookingbutton.com.au/reservations/campuslivingdirect/83638?locale=en&start_date=2013-10-14)

and here: <http://www.ucastudentvillage.co.nz/the-village/your-room/University-Hall/B-Rate-Ngata-Alpers-Connon.html>.

Bookings must be made by each student who requires accommodation using the link and form above. Any questions please contact Charlotte Easton Marketing & Sales Coordinator UC Accommodation 9 Maidstone Road, Ilam, Christchurch 8041 Private Bag 4760, Christchurch 8140. d +64 3 364 3785 m +64 27 505 4085. [charlotte.easton@canterbury.ac.nz](mailto:charlotte.easton@canterbury.ac.nz) [www.ucastudentvillage.co.nz](http://www.ucastudentvillage.co.nz)

Students are welcome to arrange their own accommodation independently but must still enrol in SARC 384 or SARC484 or SARC 485 through VUW as soon as practical please.

## How will the studio operate?

The Performing Arts Precinct Studio will be conducted along the lines of an Atelier where students will collaborate, similar to how they might in an office.

Students will begin by collectively researching the precinct context before we dive into individual design based experiments, in a model based charette.

Seven of these schemes will be voted into the next phase, to be developed the following week in small groups of three.

These concept proposals will then be developed in larger teams. By the end of the final studio a winning proposal will be decided.

## Who else is involved and where will the studio be located?

The Studio will occur in a collaborative environment with CPIT BAS students, Unitec school of Architecture, Auckland University, and Lincoln University students who will be working on a series of collaborative programmes alongside the VUW programme.

A series of Lectures and guest crits will allow cross overs to occur. The studio will run full time 9 - 5 from CPIT studio space at Madras Street.

CO-ORDINATOR  
MARK SOUTHCOMBE.  
027 313 1203