

Saying you're scared

Laurie and Winifred Bauer

Question 35 asked about ways of expressing fear:

- 35** You were climbing a tree, and the branch you were standing on suddenly cracked, giving you a real fright. You want to tell your friend how you felt. What would you say?

A few schools lost sight of the fact that they were asked to say how they felt, and not what happened, but in general this question was successful in eliciting the forms we were interested in. However, the answers did not turn out to be particularly interesting.

Once more, there were a number of distinct thematic groups, and the responses were therefore grouped in that way, and then the members of the group were also considered in their own right. There were four principal groups of items: those using the base *freak*, those using the base *scare*, those involving *shit/crap*, those involving *piss* etc. There were also two other expressions which were considered in the first pass over the data. The number of responses was: *freak* (83), *scare* (69), *shit* (35); *piss* (19); *dropped balls* (5); *got a buzz* (2). *Freak* forms were reported from Northland to Southland, and were fairly evenly distributed across the country, although there is a slight tendency for it to be more common in the North Island than the South.

	North Island		South Island	
	No.	%	No.	%
Schools	93	62	57	38
<i>Freak</i>	58	70	25	30

Scare forms were similarly widespread, with an even slighter tendency to occur in the North Island than the South.

Shit forms were reported from Northland to South Otago, and although much less frequent, there was no obvious pattern to the distribution.

Piss forms were also reported from Northland to Southland, although they were less frequent in the South Island than the North, and commoner in the Northern Region than elsewhere:

	North Island		South Island	
	No.	%	No.	%
Schools	93	62	57	38
<i>Piss</i> forms	14	74	5	26

	Northern Region		Central Region		Southern Region	
	No.	% of total	No.	% of total	No.	% of total
Schools	57	38	78	52	14	9
<i>Piss</i> forms	13	68	5	26	1	5

However, since this was a group of forms with several different expressions contributing to it, not a great deal of weight can be placed on this.

Drop my balls was reported four times from Northland and Auckland, and once from Christchurch.

Get a buzz was included only because the two reports came from adjacent boxes on the western side of Lake Taupo.

There was no evidence of any clear social differentiation in the distribution of these forms.

The items contributing to each of the four main groups were considered separately.

The *freak* forms considered were: *freaky* (46); *I freaked out* (32); *I was freaked* (14); *I freaked* (8). Some of these were in fact groups of similar items. *Freaky* included forms like *so freaky*, *freaky as*; *I freaked out* included one report of *a freak out*, etc. *Freaky* was reported from Northland to Southland, but it was more frequent in the North Island than the South, and more frequent in the Northern Region than the Central Region:

	North Island		South Island	
	No.	%	No.	%
Schools	93	62	57	38
<i>Freaky</i>	36	78	10	22

	Northern Region		Central Region		Southern Region	
	No.	% of total	No.	% of total	No.	% of total
Schools	57	38	78	52	14	9
<i>Freaky</i>	25	54	16	35	4	9

I freaked out was reported from Northland to Southland, but again, it is marginally more frequent in the North Island than the South, but with quite a high frequency in the Southern Region:

	North Island		South Island	
	No.	%	No.	%
Schools	93	62	57	38
<i>Freaked out</i>	22	69	10	31

	Northern Region		Central Region		Southern Region	
	No.	% of total	No.	% of total	No.	% of total
Schools	57	38	78	52	14	9
<i>Freaked out</i>	12	38	15	47	5	16

I was freaked was reported from Northland to Southland, but was a little more frequent in the North Island than the South:

	North Island		South Island	
	No.	%	No.	%
Schools	93	62	57	38
<i>I was freaked</i>	10	71	4	29

I freaked was dotted from Northland to south Canterbury, with no obvious patterning.

The scare forms considered were: *scared* (29); *scary* (23); *scared shitless* (20); *shit-scared* (16); *scared the crap out of me* (6); *scared out of my wits* (5).

Scared was reported from Northland to Southland, but there were – perhaps very surprisingly – more reports from the North Island than the South:

	North Island		South Island	
	No.	%	No.	%
Schools	93	62	57	38
<i>I was scared</i>	22	76	7	24

Scary was reported from Northland to south Canterbury, but was absent from the Southern Region. There was also a large swathe of the North Island which did not report it, from south Auckland down to Hawkes Bay. All the Northern Region reports were thus from Northland, Auckland and the Coromandel. The regional figures are as follows:

	Northern Region		Central Region		Southern Region	
	No.	% of total	No.	% of total	No.	% of total
Schools	57	38	78	52	14	9
<i>Scary</i>	11	48	12	52	0	0

Scared shitless was reported from Northland to Southland, but was more frequent in the Northern Region than elsewhere:

	Northern Region		Central Region		Southern Region	
	No.	% of total	No.	% of total	No.	% of total
Schools	57	38	78	52	14	9
<i>Scared shitless</i>	10	50	9	45	1	5

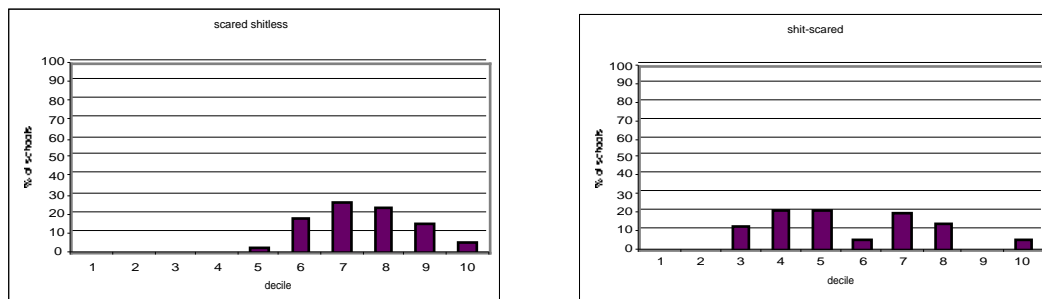
Shit-scared was reported from Northland to Otago, but again was not evenly spread across the country, with the Northern Region reporting more than its share:

	Northern Region		Central Region		Southern Region	
	No.	% of total	No.	% of total	No.	% of total
Schools	57	38	78	52	14	9
<i>Shit-scared</i>	8	50	7	44	1	6

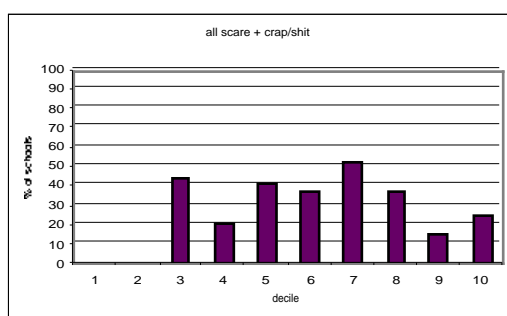
Scared the crap out of me was reported from scattered locations from Auckland to Otago.

Scared out of my wits was reported from scattered locations from Auckland to Nelson. It may be the case that this is a higher decile form, but there were so few reports that the numbers cannot be reliable.

Both *shit-scared* and *scared shitless* show some signs of social differentiation, as the following graphs show:



Scared shitless, in particular, seems to be a high decile form. When these forms are added together, and the reports of *scared the crap out of me* are included, the following picture emerges:



This is a somewhat unexpected finding. It is perhaps worth noting that the *scared* forms as a whole do not show this kind of patterning.

The remaining groups were small. The forms considered were: *shit myself* (16); *nearly shit my undies* (9); *crapped my pants* (6); *pissed my pants* (6); *nearly pissed* (5); *wet myself* (5); *nearly shat* (4). None of these show anything interesting in their distribution, and the number of forms is so small that the figures for the deciles are not worth considering. The only point that may be worth noting is that three of the four occurrences of *shat* were from the South Island, with the other one from Auckland.

Thus this set of data as a whole did not show a great deal of patterning, although there were regional differences with some forms which may be significant in the larger picture.

Statistical Analysis

The forms *got a buzz*, *dropped my balls*, *freaked out*, *freaky*, *scared shitless*, *scary* and *shit-scared* were selected for further statistical analysis.

Got a buzz was a very low frequency item included to assist with the analysis into regions. It was not expected to show correlations with any of the factors we considered, and did not. Both reports were from the Central North Island.

Dropped my balls was not reported from the Southern Region.

Freaked out did not correlate significantly with any of the factors considered.

Freaky is more common in the Northern Region than in the Central Region (p-value 0.0036). It is significantly more common in the North Island than the South Island (p-value 0.0077). The interaction between Main Region and Island was considered. The p-value for Island variation when Main Region variation is taken into account is not significant (0.1181). The p-value for the Northern – Central contrast (obtained through a contrast statement) when Island is taken into account is not significant, either (0.1388). This suggests that Island perhaps has a marginally stronger effect than Main Region, but the difference is not great. To a very considerable extent, either of these forms can account for the other.

Scared shitless was shown to be high decile (p-value 0.0005).

Scary was not reported from the Southern Region.

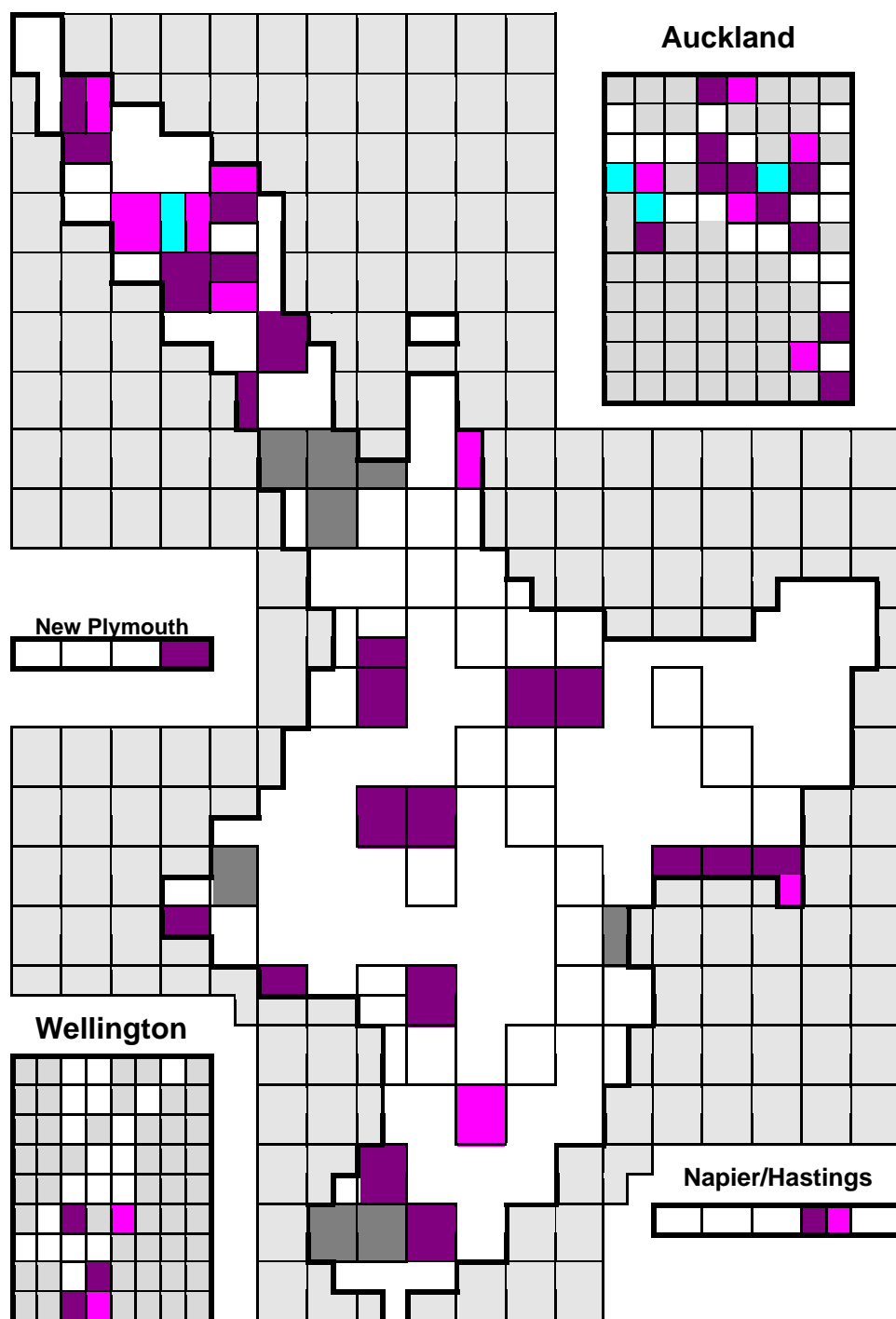
Shit-scared did not correlate significantly with any of these features.

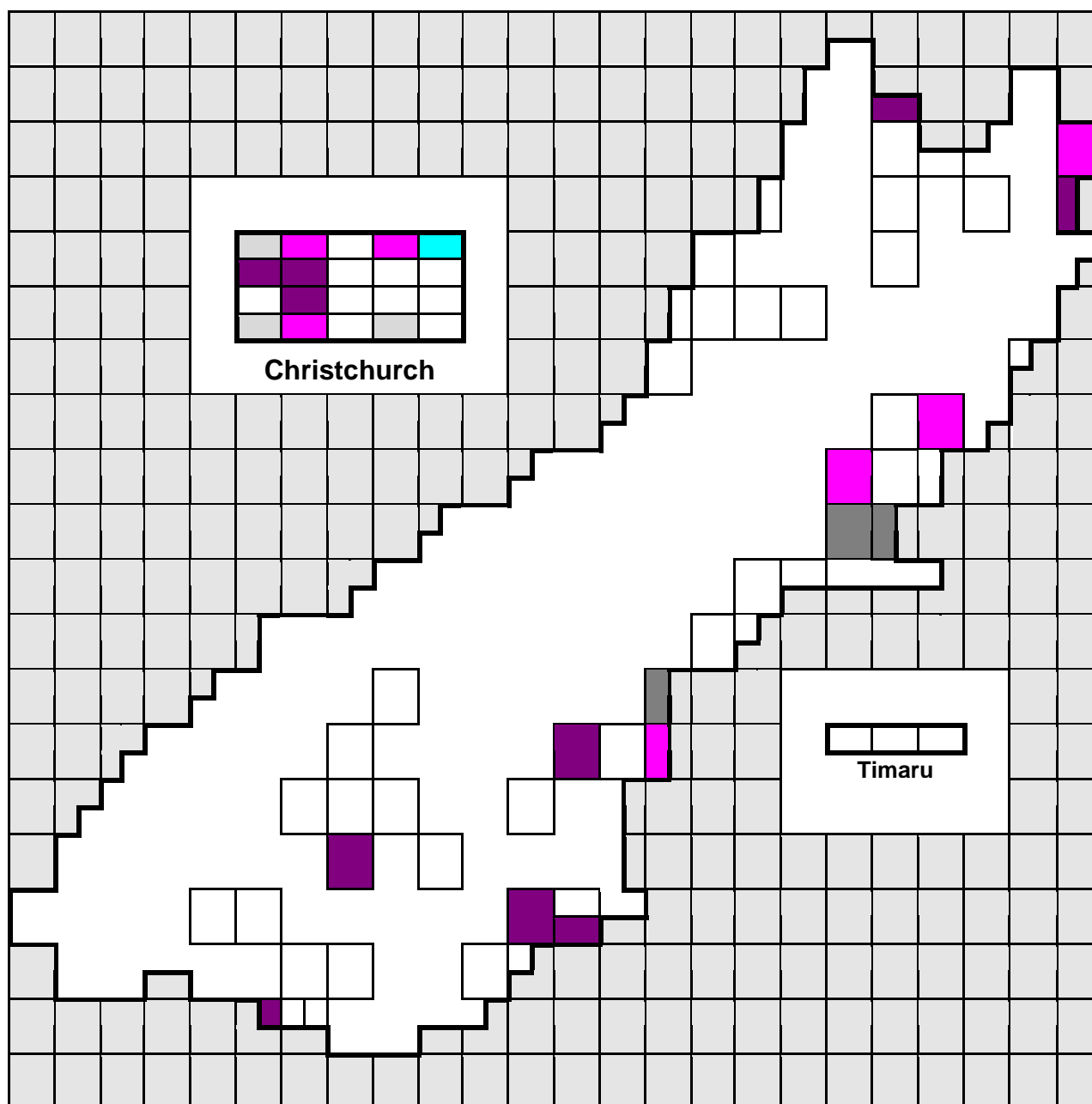
Summary

These forms showed little evidence of patterning in relation to the factors considered. However, even in this set of data, there is some evidence for social and regional variation.

The relevant map follows.

Map: *freaky, scary, dropped my balls*





Key

Note that the insets are not to scale, nor all on the same scale for practical reasons. Each box represents one school in both urban and rural areas.

	freaky		See urban map insert
	scary		I dropped my balls

Q35 Statistics: Scared Scared by Decile

Analysis Of GEE Parameter Estimates – Empirical Standard Error Estimates
Empirical 95% Confidence Limits

parameter		Estimate	Std Err	Lower	Upper	Z	Pr> Z
intercept	0.0000	
item	buzz	-1.8253	0.7261	-3.2485	-0.4022	-2.514	0.0119
item	dropblls	-2.6181	0.9686	-4.5165	-0.7197	-2.703	0.0069
item	freakout	-1.0406	0.3994	-1.8233	-0.2578	-2.605	0.0092
item	freaky	-0.5880	0.4137	-1.3988	0.2228	-1.421	0.1552
item	sc_shtls	-3.4075	0.5143	-4.4154	-2.3995	-6.626	0.0000
item	scary	-1.6315	0.5044	-2.6202	-0.6428	-3.234	0.0012
item	sh_scrd	-2.2581	0.4953	-3.2288	-1.2874	-4.559	0.0000
decile*item	buzz	-0.6474	0.1564	-0.9539	-0.3408	-4.139	0.0000
decile*item	dropblls	-0.1406	0.1825	-0.4982	0.2171	-.7704	0.4411
decile*item	freakout	-0.0462	0.0615	-0.1667	0.0744	-.7505	0.4529
decile*item	freaky	-0.0395	0.0665	-0.1698	0.0909	-.5933	0.5530
decile*item	sc_shtls	0.2398	0.0685	0.1055	0.3741	3.4989	0.0005
decile*item	scary	-0.0129	0.0792	-0.1682	0.1423	-.1630	0.8705
decile*item	sh_scrd	0.0234	0.0715	-0.1167	0.1634	0.3269	0.7438
scale	0.9532	

Scared by Main Region

Analysis Of Initial Parameter Estimates

parameter		DF	Estimate	Std Err	ChiSquare	Pr>Chi
intercept	0	0.00	0.0000	.	.	
item	buzz	1	-26.3653	0.7198	1341.4800	0.0001
item	dropblls	1	-26.3654	1.0065	686.2226	0.0001
item	freakout	1	-0.5878	0.5578	1.1105	0.2920
item	freaky	1	-0.9163	0.5916	2.3988	0.1214
item	sc_shtls	1	-2.5649	1.0377	6.1090	0.0134
item	scary	1	-26.3659	0.3138	7058.5613	0.0001
item	sh_scrd	1	-2.5649	1.0377	6.1090	0.0134
item*region1	buzz, 1	0	23.0511	0.0000	.	.
item*region1	buzz, 2	1	0.0000	60132.5783	0.0000	1.0000
item*region1	buzz, 3	0	0.0000	0.0000	.	.
item*region1	dropblls, 1	1	23.7814	1.1322	441.2007	0.0001
item*region1	dropblls, 2	0	22.0216	0.0000	.	.
item*region1	dropblls, 3	0	0.0000	0.0000	.	.
item*region1	freakout, 1	1	-0.7340	0.6455	1.2929	0.2555
item*region1	freakout, 2	1	-0.8473	0.6274	1.8237	0.1769
item*region1	freakout, 3	0	0.0000	0.0000	.	.
item*region1	freaky, 1	1	0.6694	0.6490	1.0638	0.3023
item*region1	freaky, 2	1	-0.4383	0.6547	0.4481	0.5032
item*region1	freaky, 3	0	0.0000	0.0000	.	.
item*region1	sc_shtls, 1	1	1.0174	1.0946	0.8639	0.3527
item*region1	sc_shtls, 2	1	0.5281	1.0966	0.2319	0.6301
item*region1	sc_shtls, 3	0	0.0000	0.0000	.	.
item*region1	scary, 1	1	24.9352	0.4595	2944.8846	0.0001
item*region1	scary, 2	0	24.6612	0.0000	.	.
item*region1	scary, 3	0	0.0000	0.0000	.	.
item*region1	sh_scrd, 1	1	0.7526	1.1056	0.4633	0.4961
item*region1	sh_scrd, 2	1	0.2482	1.1108	0.0499	0.8232
item*region1	sh_scrd, 3	0	0.0000	0.0000	.	.
scale	0	1.00	0.0000	.	.	

CONTRAST Statement Results

Contrast	DF	ChiSquare	Pr>Chi	Type
1 -2 for freakout	1	0.0681	0.7941	LR
1 -2 for freaky	1	8.4558	0.0036	LR
1 -2 for sc_shtls	1	0.9705	0.3246	LR
1 -2 for sh_scrd	1	0.8430	0.3585	LR

Scared by Sub-Region

Analysis Of Initial Parameter Estimates

parameter		DF	Estimate	Std Err	ChiSquare	Pr>Chi
intercept	0	0.00	0.0000	.	.	
item	buzz	1	-26.3653	0.7360	1283.3176	0.0001
item	dropblls	1	-26.3651	1.0290	656.5029	0.0001
item	freakout	1	-0.5878	0.5578	1.1105	0.2920
item	freaky	1	-0.9163	0.5916	2.3988	0.1214
item	sc_shtls	1	-2.5649	1.0377	6.1090	0.0134
item	scary	1	-26.3652	1.0541	625.6094	0.0001
item	sh_scrd	1	-2.5649	1.0377	6.1090	0.0134
item*region2	buzz, 1	1	0.0000	216811.094	0.0000	1.0000
item*region2	buzz, 2	1	0.0000	216811.094	0.0000	1.0000
item*region2	buzz, 3	1	0.0000	121837.317	0.0000	1.0000
item*region2	buzz, 4	0	23.8804	0.0000	.	.
item*region2	buzz, 5	1	0.0000	153308.595	0.0000	1.0000
item*region2	buzz, 6	1	0.0000	113225.901	0.0000	1.0000
item*region2	buzz, 7	1	0.0000	177025.517	0.0000	1.0000
item*region2	buzz, 8	1	0.0000	216811.094	0.0000	1.0000
item*region2	buzz, 9	1	0.0000	125175.944	0.0000	1.0000
item*region2	buzz, 10	1	0.0000	167941.152	0.0000	1.0000
item*region2	buzz, 11	0	0.0000	0.0000	.	.
item*region2	dropblls, 1	1	24.7557	1.5029	271.3115	0.0001
item*region2	dropblls, 2	1	-0.0002	216811.094	0.0000	1.0000
item*region2	dropblls, 3	1	24.6912	1.2061	419.1048	0.0001
item*region2	dropblls, 4	1	-0.0002	104152.681	0.0000	1.0000
item*region2	dropblls, 5	1	-0.0002	153308.595	0.0000	1.0000
item*region2	dropblls, 6	1	-0.0002	113225.901	0.0000	1.0000
item*region2	dropblls, 7	1	-0.0002	177025.517	0.0000	1.0000
item*region2	dropblls, 8	1	-0.0002	216811.094	0.0000	1.0000
item*region2	dropblls, 9	0	23.5319	0.0000	.	.
item*region2	dropblls, 10	1	-0.0002	167941.152	0.0000	1.0000
item*region2	dropblls, 11	0	0.0000	0.0000	.	.
item*region2	freakout, 1	1	-25.7775	216811.094	0.0000	0.9999
item*region2	freakout, 2	1	0.5878	0.9888	0.3533	0.5522
item*region2	freakout, 3	1	-1.0862	0.8408	1.6689	0.1964
item*region2	freakout, 4	1	-0.6162	0.7265	0.7194	0.3963
item*region2	freakout, 5	1	0.2513	0.8087	0.0966	0.7560
item*region2	freakout, 6	1	-0.6360	0.7549	0.7097	0.3995
item*region2	freakout, 7	1	-1.4917	1.1984	1.5493	0.2132
item*region2	freakout, 8	1	-1.0217	1.2293	0.6907	0.4059
item*region2	freakout, 9	1	-1.4917	0.9347	2.5469	0.1105
item*region2	freakout, 10	1	-1.6094	1.1926	1.8213	0.1772
item*region2	freakout, 11	0	0.0000	0.0000	.	.
item*region2	freaky, 1	1	0.9163	1.0083	0.8258	0.3635

item*region2	freaky, 2	1	0.9163	1.0083	0.8258	0.3635
item*region2	freaky, 3	1	1.2347	0.7523	2.6941	0.1007
item*region2	freaky, 4	1	0.1054	0.7284	0.0209	0.8850
item*region2	freaky, 5	1	0.2231	0.8515	0.0687	0.7933
item*region2	freaky, 6	1	-0.0645	0.7610	0.0072	0.9324
item*region2	freaky, 7	1	-0.3365	0.9964	0.1140	0.7356
item*region2	freaky, 8	1	-25.4490	216811.094	0.0000	0.9999
item*region2	freaky, 9	1	-0.6931	0.8660	0.6406	0.4235
item*region2	freaky, 10	1	-1.2809	1.2088	1.1230	0.2893
item*region2	freaky 11	0	0.0000	0.0000	.	.
item*region2	sc_shtls, 1	1	-23.8004	216811.094	0.0000	0.9999
item*region2	sc_shtls, 2	1	1.8718	1.3516	1.9178	0.1661
item*region2	sc_shtls, 3	1	1.7918	1.1491	2.4312	0.1189
item*region2	sc_shtls, 4	1	0.0800	1.2722	0.0040	0.9498
item*region2	sc_shtls, 5	1	0.1671	1.4724	0.0129	0.9097
item*region2	sc_shtls, 6	1	0.7191	1.2095	0.3535	0.5521
item*region2	sc_shtls, 7	1	1.3122	1.3114	1.0012	0.3170
item*region2	sc_shtls, 8	1	-23.8004	216811.094	0.0000	0.9999
item*region2	sc_shtls, 9	1	-0.2683	1.4614	0.0337	0.8544
item*region2	sc_shtls, 10	1	1.1787	1.3046	0.8163	0.3663
item*region2	sc_shtls, 11	0	0.0000	0.0000	.	.
item*region2	scary, 1	1	26.3652	1.3333	391.0059	0.0001
item*region2	scary, 2	1	25.6720	1.3642	354.1176	0.0001
item*region2	scary 3	1	25.5920	1.1639	483.4638	0.0001
item*region2	scary,4	1	-0.0002	104152.681	0.0000	1.0000
item*region2	scary, 5	1	24.7557	1.3081	358.1566	0.0001
item*region2	scary, 6	1	24.5193	1.2236	401.5812	0.0001
item*region2	scary 7	1	24.2857	1.4954	263.7597	0.0001
item*region2	scary, 8	1	-0.0002	216811.094	0.0000	1.0000
item*region2	scary, 9	1	25.4096	1.1781	465.1544	0.0001
item*region2	scary, 10	0	24.1679	0.0000	.	.
item*region2	scary, 11	0	0.0000	0.0000	.	.
item*region2	sh_scrd, 1	1	-23.8004	216811.094	0.0000	0.9999
item*region2	sh_scrd, 2	1	1.8718	1.3516	1.9178	0.1661
item*region2	sh_scrd, 3	1	1.5353	1.1612	1.7482	0.1861
item*region2	sh_scrd, 4	1	-0.6539	1.4550	0.2020	0.6531
item*region2	sh_scrd, 5	1	0.1671	1.4724	0.0129	0.9097
item*region2	sh_scrd, 6	1	-0.4796	1.4576	0.1083	0.7421
item*region2	sh_scrd, 7	1	1.3122	1.3114	1.0012	0.3170
item*region2	sh_scrd, 8	1	0.9555	1.5089	0.4010	0.5266
item*region2	sh_scrd, 9	1	-0.2683	1.4614	0.0337	0.8544
item*region2	sh_scrd, 10	1	0.3677	1.4792	0.0618	0.8037
item*region2	sh_scrd, 11	0	0.0000	0.0000	.	.
scale	0	1.00	0.0000	.	.	.

Scared by Island

Analysis Of Initial Parameter Estimates

parameter		DF	Estimate	Std Err	ChiSquare	Pr>Chi
intercept	0	0.00	0.0000	.	.	
item	buzz	1	-25.3653	0.7148	1259.1262	0.0001
item	dropblls	1	-4.0254	1.0089	15.9192	0.0001
item	freakout	1	-1.5476	0.3482	19.7478	0.0001
item	freaky	1	-1.5476	0.3482	19.7478	0.0001
item	sc_shtls	1	-2.1401	0.4316	24.5867	0.0001
item	scary	1	-1.9661	0.4036	23.7361	0.0001
item	sh_scrd	1	-2.1401	0.4316	24.5867	0.0001
item*island	buzz, 1	0	21.5476	0.0000	.	.
item*island	buzz, 2	0	0.0000	0.0000	.	.
item*island	dropblls, 1	1	0.9230	1.1310	0.6661	0.4144
item*island	dropblls, 2	0	0.0000	0.0000	.	.
item*island	freakout, 1	1	0.3759	0.4252	0.7816	0.3767
item*island	freakout, 2	0	0.0000	0.0000	.	.
item*island	freaky, 1	1	1.0880	0.4082	7.1058	0.0077
item*island	freaky, 2	0	0.0000	0.0000	.	.
item*island	sc_shtls, 1	1	0.4097	0.5200	0.6208	0.4308
item*island	sc_shtls, 2	0	0.0000	0.0000	.	.
item*island	scary, 1	1	0.3949	0.4882	0.6543	0.4186
item*island	scary, 2	0	0.0000	0.0000	.	.
item*island	sh_scrd, 1	1	0.0238	0.5462	0.0019	0.9652
item*island	sh_scrd, 2	0	0.0000	0.0000	.	.
scale	0	1.00	0.0000	.	.	

Scared by Catholic

Analysis Of Initial Parameter Estimates

parameter		DF	Estimate	Std Err	ChiSquare	Pr>Chi
intercept	0	0.00	0.0000	.	.	
item	buzz	1	-25.3653	0.7126	1267.1533	0.0001
item	dropblls	1	-25.3653	0.4560	3094.2105	0.0001
item	freakout	1	-1.0986	0.5774	3.6208	0.0571
item	freaky	1	-0.0000	0.5000	0.0000	1.0000
item	sc_shtls	1	-1.4663	0.6405	5.2410	0.0221
item	scary	1	-1.9459	0.7559	6.6265	0.0100
item	sh_scrd	1	-1.4663	0.6405	5.2410	0.0221
item*catholic	buzz, 1	0	21.1987	0.0000	.	.
item*catholic	buzz, 2	0	0.0000	0.0000	.	.
item*catholic	dropblls, 1	0	22.1385	0.0000	.	.
item*catholic	dropblls, 2	0	0.0000	0.0000	.	.
item*catholic	freakout, 1	1	-0.2039	0.6154	0.1098	0.7404
item*catholic	freakout, 2	0	0.0000	0.0000	.	.
item*catholic	freaky, 1	1	-0.9704	0.5369	3.2660	0.0707
item*catholic	freaky, 2	0	0.0000	0.0000	.	.
item*catholic	sc_shtls, 1	1	-0.4366	0.6913	0.3990	0.5276
item*catholic	sc_shtls, 2	0	0.0000	0.0000	.	.
item*catholic	scary, 1	1	0.2900	0.7926	0.1338	0.7145
item*catholic	scary, 2	0	0.0000	0.0000	.	.
item*catholic	sh_scrd, 1	1	-0.7394	0.7040	1.1030	0.2936
item*catholic	sh_scrd, 2	0	0.0000	0.0000	.	.
scale	0	1.00	0.0000	.	.	

Scared by Urban/Rural

Analysis Of Initial Parameter Estimates

parameter		DF	Estimate	Std Err	ChiSquare	Pr>Chi
intercept	0	0.00	0.0000	.	.	
item	buzz	1	-25.3653	0.7155	1256.8737	0.0001
item	dropblls	1	-2.6210	0.5179	25.6164	0.0001
item	freakout	1	-1.1676	0.3060	14.5573	0.0001
item	freaky	1	-0.5931	0.2719	4.7572	0.0292
item	sc_shtls	1	-1.4733	0.3343	19.4253	0.0001
item	scary	1	-1.4733	0.3343	19.4253	0.0001
item	sh_scrd	1	-2.3795	0.4675	25.9119	0.0001
item*urb_rur	buzz, 1	0	21.6277	0.0000	.	.
item*urb_rur	buzz, 2	0	0.0000	0.0000	.	.
item*urb_rur	dropblls, 1	1	-1.8216	1.1313	2.5925	0.1074
item*urb_rur	dropblls, 2	0	0.0000	0.0000	.	.
item*urb_rur	freakout, 1	1	-0.2333	0.4086	0.3260	0.5681
item*urb_rur	freakout, 2	0	0.0000	0.0000	.	.
item*urb_rur	freaky, 1	1	-0.2989	0.3610	0.6857	0.4076
item*urb_rur	freaky, 2	0	0.0000	0.0000	.	.
item*urb_rur	sc_shtls, 1	1	-0.6733	0.4856	1.9221	0.1656
item*urb_rur	sc_shtls, 2	0	0.0000	0.0000	.	.
item*urb_rur	scary, 1	1	-0.4463	0.4647	0.9222	0.3369
item*urb_rur	scary, 2	0	0.0000	0.0000	.	.
item*urb_rur	sh_scrd, 1	1	0.3514	0.5759	0.3723	0.5418
item*urb_rur	sh_scrd, 2	0	0.0000	0.0000	.	.
scale	0	1.00	0.0000	.	.	

Scared in Northern and Central Regions only

Analysis Of Initial Parameter Estimates

parameter		DF	Estimate	Std Err	ChiSquare	Pr>Chi
intercept	0	0.00	0.0000	.	.	
item	buzz	1	-26.3653	0.7198	1341.4795	0.0001
item	drop_blls	1	-4.3438	1.0065	18.6267	0.0001
item	freakout	1	-1.4351	0.2873	24.9512	0.0001
item	freaky	1	-1.3545	0.2804	23.3348	0.0001
item	sc_shtls	1	-2.0369	0.3544	33.0315	0.0001
item	scary	1	-1.7047	0.3138	29.5088	0.0001
item	sh_scrd	1	-2.3168	0.3962	34.2001	0.0001
item*region1	buzz, 1	0	23.0511	0.0000	.	.
item*region1	buzz, 2	0	0.0000	0.0000	.	.
item*region1	drop_blls, 1	1	1.7598	1.1322	2.4160	0.1201
item*region1	drop_blls, 2	0	0.0000	0.0000	.	.
item*region1	freakout, 1	1	0.1133	0.4337	0.0683	0.7939
item*region1	freakout, 2	0	0.0000	0.0000	.	.
item*region1	freaky, 1	1	1.1077	0.3871	8.1864	0.0042
item*region1	freaky, 2	0	0.0000	0.0000	.	.
item*region1	sc_shtls, 1	1	0.4893	0.4969	0.9698	0.3247
item*region1	sc_shtls, 2	0	0.0000	0.0000	.	.
item*region1	scary, 1	1	0.2740	0.4595	0.3556	0.5510
item*region1	scary, 2	0	0.0000	0.0000	.	.
item*region1	sh_scrd, 1	1	0.5044	0.5499	0.8414	0.3590
item*region1	sh_scrd, 2	0	0.0000	0.0000	.	.
scale	0	1.00	0.0000	.	.	

Scared by Main Region and Island Model 2 (no sig. figs. Model 1)

Analysis Of Initial Parameter Estimates

parameter		DF	Estimate	Std Err	ChiSquare	Pr>Chi
intercept	0	0.00	0.0000	.	.	
item	buzz	1	-26.3653	0.7198	1341.4798	0.0001
item	drop_blls	1	-26.3654	1.0118	678.9697	0.0001
item	freakout	1	-0.5878	0.5578	1.1105	0.2920
item	freaky	1	-0.9163	0.5916	2.3988	0.1214
item	sc_shtls	1	-2.5649	1.0377	6.1090	0.0134
item	scary	1	-26.3655	0.4131	4073.8422	0.0001
item	sh_scrd	1	-2.5649	1.0377	6.1090	0.0134
item*region1	buzz, 1	0	23.0511	0.0000	.	.
item*region1	buzz, 2	1	0.0000	60132.5783	0.0000	1.0000
item*region1	buzz, 3	0	0.0000	0.0000	.	.
item*region1	drop_blls, 1	1	46.4091	1.1370	1666.1585	0.0001
item*region1	drop_blls, 2	0	22.6278	0.0000	.	.
item*region1	drop_blls, 3	0	0.0000	0.0000	.	.
item*region1	freakout, 1	1	-1.8458	0.8849	4.3514	0.0370

item*region1	freakout, 2	1	-1.4404	0.7331	3.8603	0.0494
item*region1	freakout, 3	0	0.0000	0.0000	.	.
item*region1	freaky, 1	1	-0.2334	0.8689	0.0722	0.7882
item*region1	freaky, 2	1	-0.9029	0.7374	1.4993	0.2208
item*region1	freaky, 3	0	0.0000	0.0000	.	.
item*region1	sc_shtls, 1	1	1.0369	1.3064	0.6300	0.4274
item*region1	sc_shtls, 2	1	0.5368	1.1416	0.2211	0.6382
item*region1	sc_shtls, 3	0	0.0000	0.0000	.	.
item*region1	scary, 1	1	25.0889	0.5882	1819.3261	0.0001
item*region1	scary, 2	0	24.7279	0.0000	.	.
item*region1	scary, 3	0	0.0000	0.0000	.	.
item*region1	sh_scrd, 1	1	1.5278	1.4068	1.1795	0.2775
item*region1	sh_scrd, 2	1	0.5368	1.1416	0.2211	0.6382
item*region1	sh_scrd, 3	0	0.0000	0.0000	.	.
item*island	buzz, 1	0	0.0000	0.0000	.	.
item*island	buzz, 2	0	0.0000	0.0000	.	.
item*island	drop_blls, 1	0	-22.6277	0.0000	.	.
item*island	drop_blls, 2	0	0.0000	0.0000	.	.
item*island	freakout, 1	1	1.1119	0.6052	3.3748	0.0662
item*island	freakout, 2	0	0.0000	0.0000	.	.
item*island	freaky, 1	1	0.9029	0.5777	2.4429	0.1181
item*island	freaky, 2	0	0.0000	0.0000	.	.
item*island	sc_shtls, 1	1	-0.0195	0.7131	0.0008	0.9781
item*island	sc_shtls, 2	0	0.0000	0.0000	.	.
item*island	scary, 1	1	-0.1542	0.6356	0.0588	0.8084
item*island	scary, 2	0	0.0000	0.0000	.	.
item*island	sh_scrd, 1	1	-0.7752	0.8698	0.7943	0.3728
item*island	sh_scrd, 2	0	0.0000	0.0000	.	.
scale	0	1.00	0.0000	.	.	

CONTRAST Statement Results

Contrast	DF	ChiSquare	Pr>Chi	Type
1 -2 for freaky	1	2.1911	0.1388	LR