



VICTORIA UNIVERSITY OF
WELLINGTON
 TE HERENGA WAKA
 NEW ZEALAND

2024

International Prospectus

UPDATED SEPTEMBER 2023



TOP 2%
OF THE WORLD'S
UNIVERSITIES*
 *Source: QS World University
 Rankings 2023

#1 IN NEW ZEALAND FOR
 RESEARCH INTENSITY*

*Latest Performance-Based Research Fund Quality Evaluation

CAPITAL THINKING.
GLOBALLY MINDED.
 MAI I TE IHO KI TE PAE

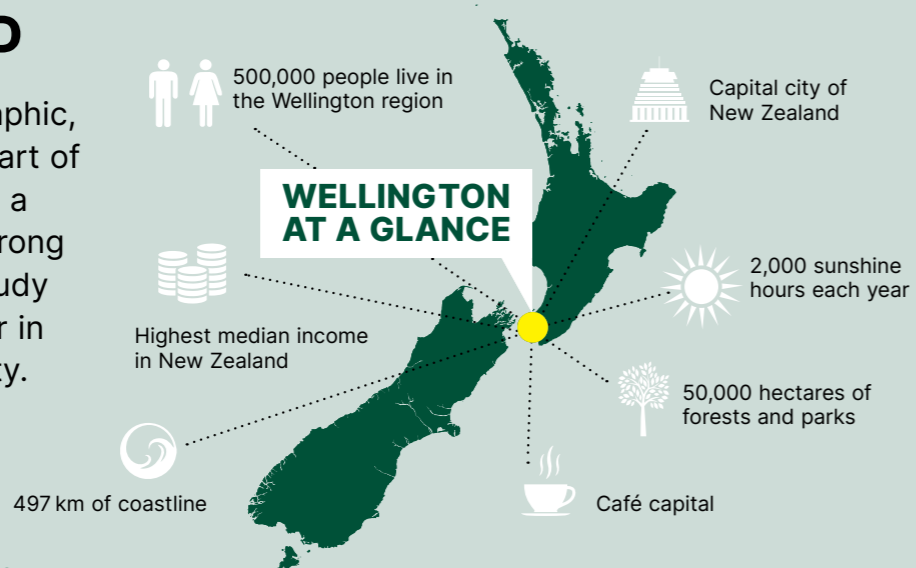
OUTSTANDING



DISCOVER WELLINGTON

NEW ZEALAND

Wellington is the geographic, political, and cultural heart of New Zealand. You'll find a great quality of life, a strong global outlook, and a study experience to remember in our beautiful harbour city.



For more information, go to www.wgtn.ac.nz/international/why-wellington

WELLINGTON IS AN IDEAL PLACE TO STUDY

CREATIVE

Wellington is New Zealand's most creative city. It has topped the list for the past 20 years. You can find Wētā Workshop and the Museum of New Zealand Te Papa Tongarewa here.

(Infometrics Creativity Index 2023)

SAFE

Wellington is a safe and friendly place to live. It's ranked among the top 10 safest cities in the world.

(Safe Cities Index 2022)

DIVERSE

About 34 percent of people who live in Wellington were born outside of New Zealand, making it a diverse and welcoming city.

(Statistics New Zealand 2018)

LIVEABLE

Regularly ranked as one of the world's most liveable cities, Wellington has great public transport and a lively calendar of events.

(Global Liveability Index 2022)

HIGH TECH

Wellington is at the forefront of technology and innovation, with many tech companies calling it home. It's named as one of the world's '21 Places of the Future.'

(Cognizant Center for the Future of Work 2021)

HAPPY

New Zealand is known for being one of the world's most sociable and supportive countries. It's no surprise that it ranks as one of the top 10 happiest countries in the world.

(World Happiness Report 2022)



VICTORIA UNIVERSITY OF WELLINGTON

Our students come from about
100
countries
around the world

Top 1%
of the world's universities in
15 subject areas
(QS World University Rankings by Subject 2023)

ZERO
CARBON BY 2030



Top 100
in the world in
7 subjects
(QS World University Rankings by Subject 2023)



#1 IN NEW ZEALAND FOR
RESEARCH INTENSITY
(Latest Performance-Based Research Fund Quality Evaluation)

2,000 of our **22,000** students
are international students

8 teaching faculties

43 research institutes

4 libraries

140+ clubs and societies



KELBURN



PIPITEA



TE ARO



"Victoria University of Wellington's excellent research facilities, approachable academic staff, and overall culture of friendliness and support really made it stand out compared to other schools. I love my daily commute along the coast. I've also really loved the café culture."

Georgia Westfall

Student, Master of Science in Cognitive and Behavioural Neuroscience





STUDY WHAT YOU LOVE

At Victoria University of Wellington, we provide our students with a strong, relevant education in nearly 200 programmes.

Our graduates are prepared for work with diverse, marketable skills in a fast-changing world. With us, you can develop strong employability skills in critical and creative thinking, enhance your ability to work both independently and collaboratively with others, and engage constructively with your local and international communities.

In the following pages, explore our areas of study and discover the right one for you.



At the time of printing the 2024 *International Prospectus*, the University was working through a change process that may impact some of our academic programmes and course offerings. Note that the majority of our courses will not be affected.

Prospective students are encouraged to discuss enrolment plans with our international team. Email international@vuw.ac.nz and our team will be able to provide you with information and advice.



EXPLORE OUR SUBJECTS

Victoria University of Wellington currently offers more than 170 different subjects. To find out more, go to www.wgtn.ac.nz/international/programmes

ARCHITECTURAL STUDIES AND BUILDING SCIENCE

Architecture
Architecture History and Theory
Building Science
Interior Architecture
Landscape Architecture
Project Management
Sustainable Engineering Systems
Urban and Regional Planning*

BUSINESS

Accounting
Actuarial Science
Business Administration*
Business Analysis*
Commercial Law
Data Science
Economics
Finance
Global Business*
Human Resource Management and Employment Relations
Information Systems
International Business Management
Marketing
Public Management*
Public Policy
Taxation
Tourism Management

COMMUNICATION

Intercultural Communication
Linguistics
Literary and Creative Communication
Marketing Communication
Media Studies
Political Communication
Science Communication

DESIGN, FILM, AND MEDIA

Animation and Visual Effects
Communication Design
Design for Social Innovation
Design Technology*
Fashion Design Technology
Film
Game Design
Industrial Design
Interaction Design
Media Design
Media Studies
User Experience Design*

EDUCATION AND TEACHING

Education
Educational Psychology
Teacher Education (Early Childhood)
Teacher Education (Primary and Secondary)**

ENGINEERING AND DIGITAL TECHNOLOGIES

Artificial Intelligence
Computer Graphics and Games
Computer Science
Cybersecurity Engineering
Data Science
Electrical and Electronic Engineering
Electronic and Computer Systems
Renewable Energy Systems*
Software Engineering

ENGLISH LITERATURE AND CREATIVE WRITING

Creative Writing*
English Literature

ENVIRONMENTAL SCIENCES

Climate Change Science and Policy*
Conservation Biology*
Ecological Restoration*
Ecology and Biodiversity
Environmental Science
Environmental Studies
Marine Biology
Marine Conservation*

HEALTH

Health Informatics
Health Leadership and Management*
Health Policy, Planning, and Service Delivery*
Health Promotion
Health Psychology
Midwifery
Nursing Practice*
Population Health, Policy, and Service Delivery
Professional Practice*
Workplace Health and Safety*

HISTORY AND PHILOSOPHY

Art History
Classical Studies
Greek
History
Latin
Museum and Heritage Studies*
Philosophy

LANGUAGES AND LINGUISTICS

Academic and Professional Writing
Applied Linguistics*
Asian Studies
Chinese
English
French
German
Intercultural Communication and Applied Translation*
Italian
Japanese
Linguistics
Literary Translation Studies*
Modern Language Studies
New Zealand Sign Language (NZSL) Studies
Pacific Studies
Samoan Studies / Matā'upu tau Sāmoa
Spanish
Te Reo Māori
Teaching English to Speakers of Other Languages (TESOL)
Text Technologies

LAW

International Trade*
Law

MATHEMATICS AND STATISTICS

Actuarial Science
Applied Statistics*
Data Science
Mathematics
Statistics

MUSIC AND THEATRE

Classical Performance
Ethnomusicology*
Instrumental/Vocal Composition
Jazz Performance
Music
Musicology*
Music/Sound*
Music Studies
Music Therapy*
Performance*
Popular Music Studies
Sonic Arts and Music Technology
Theatre

POLITICS AND PUBLIC POLICY

International Relations
Migration Studies*
Political Communication
Political Science
Public Management*
Public Policy
Strategic Studies*

PSYCHOLOGY

Cognitive and Behavioural Neuroscience*
Cross-cultural Psychology*
Educational Psychology
Forensic Psychology*
Health Psychology
Psychological Science

SCIENCE

Biology
Biomedical Science
Biotechnology
Cell and Molecular Bioscience
Chemistry
Data Science
Development Studies
Drug Discovery and Development*
Ecology and Biodiversity
Geography
Geology
Geophysics*
Human Genetics
Information Systems
Marine Biology
Molecular Microbiology*
Molecular Pathology
Molecular Pharmacology and Medicinal Chemistry
Physics
Renewable Energy Systems*
Science Communication
Science in Society*
Space Science

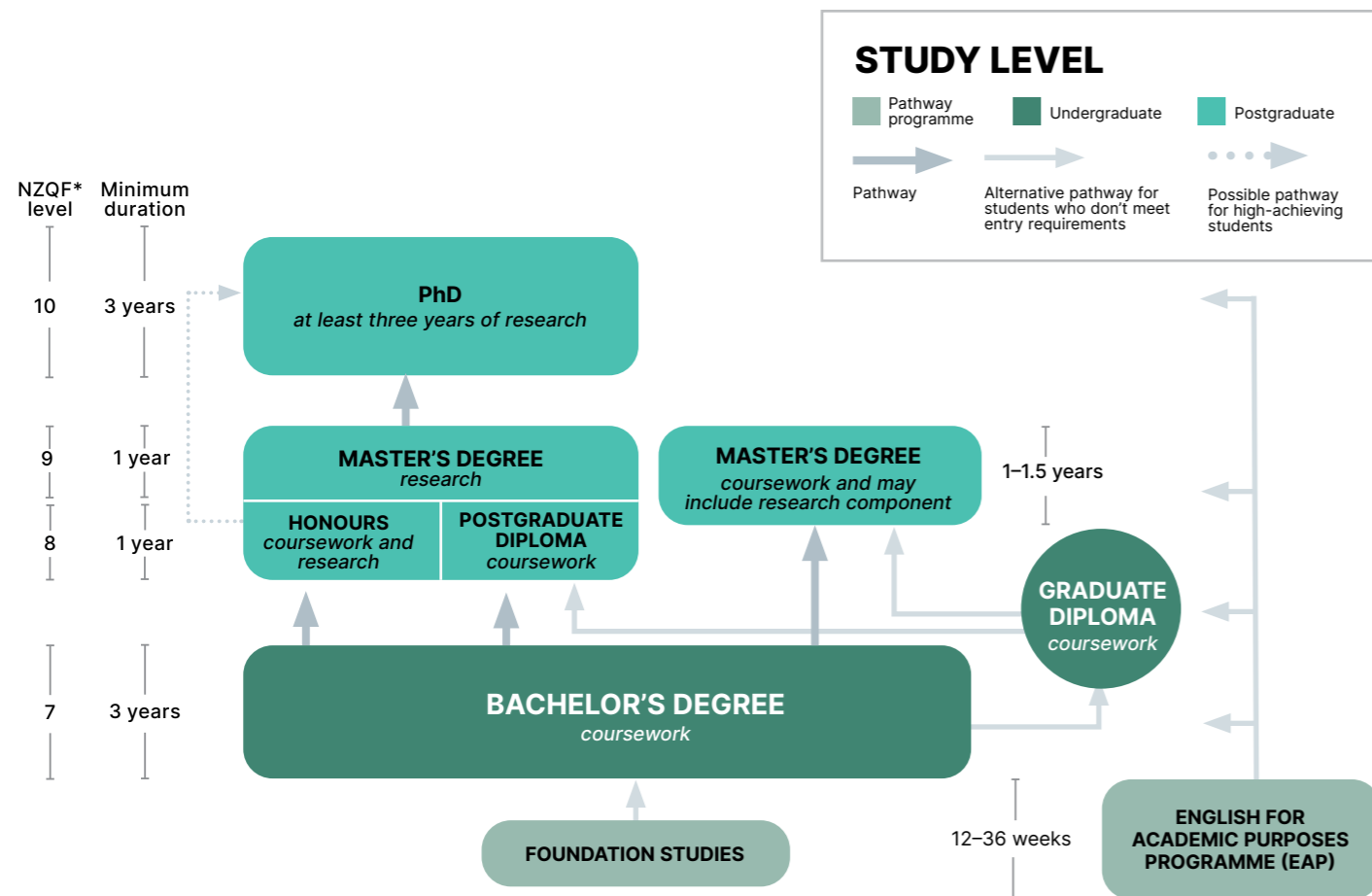
SOCIAL SCIENCES

Criminology
Cultural Anthropology
Development Studies
Gender and Sexuality Studies
Global Studies
Indigenous Studies*
Māori Resource Management
Māori Studies
Religious Studies
Social Policy
Sociology

*Available at postgraduate level only

**Available at graduate level only

HOW OUR PROGRAMMES WORK



*New Zealand Qualifications Framework

BACHELOR'S DEGREES

A Bachelor's degree—also called a first or an undergraduate degree—is made up of courses, some prescribed and some chosen by you. Most non-professional first degrees take three years to complete and require at least one major.

Major

- ▶ Refers to the specialist subject of a degree
- ▶ Most degrees allow for a single or a double major

Minor

- ▶ Adds an additional area of focus for a degree
- ▶ Similar to a major but requires fewer courses
- ▶ Having a minor is optional for most degrees

Double degree

- ▶ Refers to the study of two degrees, either at the same time or consecutively
- ▶ It is possible to cross-credit up to 120 points

POSTGRADUATE DEGREES

Postgraduate study normally requires good marks in your first degree, with a major in the same area of study. However, all applications are considered. We also offer conversion degrees, which let you gain a postgraduate qualification in a different subject to your undergraduate studies with some coursework and research.

1 YEAR → GRADUATE DIPLOMA	Specialise in an area not included in your first degree.
1 YEAR → HONOURS DEGREE OR POSTGRADUATE DIPLOMA	Explore areas of interest in your chosen field through higher-level coursework and research.
1-2 YEARS → MASTER'S DEGREE	Advance your understanding and skill in your undergraduate major or undertake study in a new professional area.
3-4 YEARS → DOCTOR OF PHILOSOPHY (PhD)	Enhance your degree and expand your knowledge through advanced study and research. See page 17 for more information.

PATHWAYS TO UNIVERSITY

FOUNDATION PROGRAMMES

If your qualification does not meet our minimum entry requirements, a recognised foundation programme can be an alternative entry pathway into a Bachelor's or postgraduate degree. Successful completion of these programmes meets both the minimum academic and English entry requirements.

Foundation Studies

The Victoria University of Wellington Foundation Studies programme helps international students who don't meet our entry requirements to prepare for undergraduate study. It offers successful students guaranteed entry into the University's undergraduate programmes. The programme is delivered by our partners at UP Education.

This programme offers flexibility with four intakes per year and online study. Course options can take six, nine, 12, or 18 months (two, three, four, or six terms, respectively), depending on your academic background and level of English.

📍 <https://wgtn.up.education>

NCUK

The NCUK programme can provide you with a direct pathway from study in your home country to degree study at Victoria University of Wellington. NCUK offers undergraduate and postgraduate pathway qualifications designed exclusively for international students.

📍 www.wgtn.ac.nz/ncuk

NEW ZEALAND SECONDARY SCHOOLS

International students can study towards New Zealand secondary school qualifications and qualify for entry to university. New Zealand schools have an excellent reputation for their teaching quality and academic facilities. Pastoral care for international students often includes home-stay accommodation with a family. Victoria University of Wellington works closely with schools to ensure a smooth transition from secondary school to university.

📍 www.wgtn.ac.nz/apply-from-nz-school

STUDY ABROAD

If you don't want to commit to a long-term degree, you can still choose to study abroad. You can study for a trimester or a year at Victoria University of Wellington and earn credits towards your home university qualification. It will be a study experience to remember as you enhance your degree in our world-class learning and teaching environment while exploring the many wonders and adventures that Wellington and the rest of New Zealand have to offer.

📍 www.wgtn.ac.nz/study-abroad

ENGLISH FOR ACADEMIC PURPOSES

Delivered by the English Language Institute at Victoria University of Wellington, our English for Academic Purposes (EAP) programme can help you improve your English and prepare you for your academic studies. The length of your programme will depend on your English language ability and your study goals. The EAP students who meet the University's minimum English-language entry score will be awarded a Certificate of Proficiency in English. For postgraduate-level study, a higher level of achievement is required.

📍 www.wgtn.ac.nz/eap



ARCHITECTURE AND DESIGN INNOVATION

Shelly Bay Community Library model by Danbie Bong
for ARCI 212 Architecture Design Integration.

STAND OUT WITH CREATIVITY

Discover a world-class education in architectural studies, building science, and design innovation in the vibrant centre of New Zealand's capital city.

LEARN FROM THE BEST

Our expert staff and state-of-the-art facilities at Te Aro campus and the Miramar Creative Centre will equip you with industry-level skills and experience, setting you up for success in your chosen field.

ACCREDITATIONS

Master of Architecture (Professional)

- ▶ New Zealand Registered Architects Board

Master of Interior Architecture

- ▶ International Federation of Interior Architects / Designers
- ▶ Interior Design / Interior Architecture Educators Association

Master of Landscape Architecture

- ▶ New Zealand Institute of Landscape Architects

Master of Urban and Regional Planning

- ▶ New Zealand Planning Institute (the programme is currently being assessed for full accreditation)

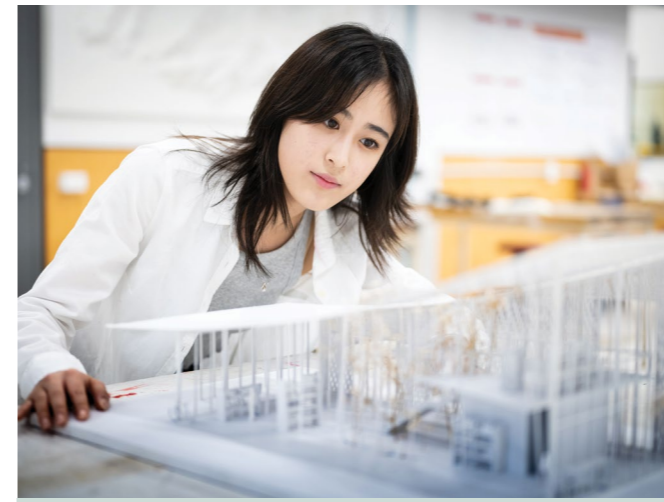
ARCHITECTURE QUALIFICATIONS		
Subject area	Qualification	Years ¹
Architecture	Bachelor of Architectural Studies ^{2 3}	3
	Graduate Diploma in Designed Environments, Architecture	1
	Postgraduate Diploma in Design Environments, Architecture	1
	Master of Architecture (Professional)	2
Architecture History and Theory	PhD	3-4
	Bachelor of Architectural Studies ^{2 3}	3
	Graduate Diploma in Designed Environments	1
	Postgraduate Diploma in Design Environments, Architecture History and Theory	1
	Master of Architecture	1
Building Science in Project Management or Sustainable Engineering Systems	PhD	3-4
	Bachelor of Building Science ³	3
	Graduate Diploma in Designed Environments, Project Management or Sustainable Engineering Systems	1
	Postgraduate Diploma in Architectural Science	1
	Master of Architectural Science	1
	Master of Architectural Science (Research)	1
Interior Architecture	PhD	3-4
	Bachelor of Architectural Studies ^{2 3}	3
	Graduate Diploma in Designed Environments, Interior Architecture	1
	Postgraduate Diploma in Design Environments, Interior Architecture	1
	Master of Interior Architecture	2
Landscape Architecture	PhD	3-4
	Bachelor of Architectural Studies ²	3
	Graduate Diploma in Designed Environments, Landscape Architecture	1
	Postgraduate Diploma in Design Environments, Landscape Architecture	1
	Master of Landscape Architecture	2
Planning	PhD	3-4
	Postgraduate Diploma in Design Environments, Urban and Regional Planning	1
	Master of Urban and Regional Planning	2

¹One year = two or three trimesters.

²Entry into the second year is competitive, based on first-year grades.

³Students can only enter the programme in Trimester 1.

For more information, see pages 18-19.



“The University fully exceeds my initial expectations. The Wellington School of Architecture's interdisciplinary approach bridging Architecture, Landscape Architecture, Interior Architecture, and Building Science provides a broader, collaborative understanding of designing for the built environment. We are taught by the best in Aotearoa [New Zealand]—the academic staff are industry professionals who expose us to various areas of expertise.”

Danbie Bong

Student, Bachelor of Architectural Studies in Architecture



3D model of a character by Adam Goodyear for ANFX 201 Animation and Visual Effects II.



“I am glad I studied for a Bachelor of Design Innovation because it changed my perspective on design and its importance in the world we are living in. Being surrounded by many creative people from different design areas at the faculty constantly sparks my creativity to work on future projects.”

Ricardo Arévalo

Graduate, Bachelor of Design Innovation
Tutor in Interaction Design
Recipient of a Te Rautaki Maruako Tutor Excellence Award from the University

DESIGN INNOVATION QUALIFICATIONS							
Subject area	Bachelor of Design Innovation ²	Graduate Diploma in Design Innovation	Postgraduate Diploma in Design Innovation	Master of Design	Master of Design Innovation	PhD	Other qualifications
Years ¹	3	1	1	1.5	1.5	3-4	
Animation and Visual Effects	•	•	•	•	•		Master of Design Technology (13-18 months)
Communication Design	•	•	•	•	•		
Design for Social Innovation	•	•	•	•	•		Master of User Experience Design (13-18 months)
Fashion Design Technology	•	•	•	•	•		
Game Design	•	•	•	•	•		Master of Design Technology Design (13-18 months)
Industrial Design	•	•	•	•	•		
Interaction Design	•	•	•	•	•		Master of User Experience (13-18 months)
Media Design	•	•	•	•	•		Master of Design Technology (13-18 months)
Design						•	

¹One year = two or three trimesters.

²Minor also available in Photographics.

For more information, see pages 18-19.





BUSINESS AND GOVERNMENT

BE AN INNOVATIVE LEADER

Study at the Wellington School of Business and Government, which is located at the heart of New Zealand's leadership, policymaking, and creative capital.

LEARN FROM THE BEST

Our students are led by staff who present original research at international conferences, publish in the best academic journals, and work closely with other universities and outstanding international companies.

INDUSTRY CONNECTIONS

You'll benefit from the meaningful connections we have with the organisations around us, through guest lectures from industry professionals, professional networking opportunities, and real-world projects.

ACCREDITATIONS



BUSINESS AND GOVERNMENT QUALIFICATIONS						
Subject area	Bachelor of Commerce ²	Graduate Diploma in Commerce	Bachelor of Commerce (Honours)	Master of Commerce ³	PhD	Other qualifications
Years ¹	3	1	1	1.5	3-4	
Accounting	•	•	•	•	•	Master of Professional Accounting—traditional pathway (12 months/3 trimesters) Master of Professional Accounting—Chartered Accounting pathway (21–25 months/5–6 trimesters)
Actuarial Science	•	•	•	•		Postgraduate Diploma in Actuarial Science (8 months/2 trimesters) Master of Actuarial Science (12 months/3 trimesters)
Business Administration						Executive Master of Business Administration (16 months/4 trimesters)
Business Analysis						Master of Professional Business Analysis (16 months/4 trimesters)
Commercial Law	•	•				
Data Science	•					
Economics	•	•	•	•	•	
Finance	•	•	•	•	•	
Global Business						Master of Global Business (12 months/3 trimesters)—specialisations available
Governing for the Future			•	•		
Human Resource Management and Employment Relations	•	•	•	•	•	
Information Systems	•	•	•	•	•	
International Business	•	•	•	•	•	Master of Global Business (12 months/3 trimesters)
Management	•	•	•	•	•	Master of Global Business (12 months/3 trimesters) Executive Master of Business Administration (16 months/4 trimesters)
Marketing	•	•	•	•	•	Master of Global Business (12 months/3 trimesters)
Public Management		•				Postgraduate Diploma in Public Management (8 months/2 trimesters) Master of Public Management (16 months/4 trimesters)
Public Policy	•	•			•	Postgraduate Diploma in Public Policy (8 months/2 trimesters) Master of Public Policy (16 months/4 trimesters)
Taxation	•	•				
Tourism Management	•	•	•	•	•	

¹One year = two or three trimesters.

²Minors are also available in Banking, Business Ethics and Sustainability Management, Econometrics, and Innovation and Entrepreneurship.

³Following a Bachelor of Commerce or equivalent.

For more information, see pages 18–21.



EDUCATION

BECOME A WORLD-CLASS EDUCATOR

Make a positive difference to the lives of children with our teacher education qualifications. You'll learn to provide quality education and care in the capital of New Zealand.

LEARN FROM THE BEST

Our university is ranked in the top 200 universities worldwide for education (2023 QS World University Rankings).



"I chose to study early childhood education because I wanted to make a genuine and positive change in the world—I also wanted to enjoy waking up and going to work each day! At Victoria University of Wellington, I've found a passionate learning community with a spirit of playfulness and a drive to support young children to become confident, curious, and adventurous citizens."

Josh Allen
Graduate, Bachelor of Education (Teaching) Early Childhood

REAL-WORLD EXPERIENCE

Our graduates are equipped to take up the challenges of the rapidly changing world of education. Our teacher education graduates are qualified to teach in New Zealand early childhood, primary and/or secondary schools depending on their programme of study, and are eligible for provisional teacher registration from the New Zealand Teachers Council.

Teaching experience is also built in to our teacher education programmes, where students gain valuable experience by being placed in classrooms as part of their programme.

EDUCATION QUALIFICATIONS		
Subject area	Qualification	Years ¹
Early Childhood Teacher Education	Bachelor of Education (Teaching) Early Childhood	3
Education	Bachelor of Arts in Education ²	3
	Bachelor of Arts in Educational Psychology ²	3
Primary and Secondary Teacher Education	Graduate Diploma of Teaching (Primary)	1
	Graduate Diploma of Teaching (Secondary)	1
Postgraduate Education	Bachelor of Arts with Honours in Education ²	1
	Postgraduate Diploma in Education	1
	Master of Arts in Education ²	1
	Master of Education	1.5
	Master of Educational Psychology	2
	PhD	3-4

¹One year = two or three trimesters.

²These qualifications are offered through the Wellington Faculty of Humanities and Social Sciences.

For more information, see pages 20–21.





ENGINEERING

TRANSFORM INDUSTRIES AND SOCIETIES

Study and develop digital technology right in the centre of New Zealand's technology and innovation capital.

INDUSTRY CONNECTIONS

The Industry Alliance Programme supports the delivery of several of our industry-focused postgraduate degrees built on connections between the University and local industry—providing industry-relevant skills and experience with real-world projects.

"I have enough resources to complete my project—the world-leading experimental platforms, and the positive research environment. But I think the thing that makes me happiest here is that my voice and ideas are valued."

Dr Yueming Sun

Graduate, Doctor of Philosophy in Engineering

ACCREDITATIONS

Cybersecurity Engineering major in the Bachelor of Engineering with Honours

- ▶ Granted provisional accreditation by Engineering New Zealand (under the Washington Accord) and will follow the standard process of full accreditation in 2024

Electrical and Electronic Engineering major in the Bachelor of Engineering with Honours

- ▶ Engineering New Zealand (under the Washington Accord)

Software Engineering major in the Bachelor of Engineering with Honours

- ▶ Engineering New Zealand (under the Washington Accord)
- ▶ IT Professionals New Zealand (under the Seoul Accord)



LEARN FROM THE BEST

The Faculty's School of Engineering and Computer Science brings together the best of engineering and computer science from a well-established group of international staff with a depth of experience in research and in industry.

Subject area	ENGINEERING QUALIFICATIONS							Other qualifications	
	Bachelor of Science	Graduate Diploma in Science	Bachelor of Engineering with Honours	Bachelor of Science with Honours	Postgraduate Diploma in Science	Master of Engineering	Master of Science		PhD
Years ¹	3	1	4	1	1	1	1-2	3-4	
Artificial Intelligence	•	•		•	•		•	•	Master of Artificial Intelligence (1-2 years)
Computer Graphics and Games	•	•		•	•		•	•	
Computer Science	•	•		•	•		•	•	Master of Computer Science (1-2 years)
Cybersecurity and Network Engineering			•				•	•	Master of Engineering Practice (1 year/ 3 trimesters)
Data Science	•	•		•	•		•	•	Master of Data Science (2 years)
Electrical and Electronic Engineering / Electronic and Computer Systems	•	•	•	•	•	•	•	•	Master of Engineering Practice (1 year/ 3 trimesters) Master of Renewable Energy (1 year)
Software Engineering			•					•	Master of Engineering Practice (1 year/ 3 trimesters) Master of Software Development (1 year/ 3 trimesters)

¹One year = two or three trimesters.

For more information, see pages 20-21.



HEALTH

SHAPE A HEALTHY FUTURE

Pursue your passion for improving people's health and wellbeing in the heart of New Zealand.

ACCREDITATIONS

Bachelor of Midwifery

- ▶ Midwifery Council of New Zealand

Master of Nursing Practice

- ▶ Nursing Council of New Zealand

Workplace Health and Safety specialisation of the Postgraduate Diploma of Health and Master of Health

- ▶ Institution of Occupational Safety and Health



"No other university I looked at offered this programme, and Victoria University of Wellington is a top-ranked university for research, which really solidified my choice.

"There are so many different cultures in Wellington, I feel like I fit in, and the support from the lecturers and administrative staff has been so amazing."

Pramishka Madurapperuma

Graduate, Postgraduate Diploma in Health (Health Leadership and Management)

LEARN FROM THE BEST

We bring together teachers, researchers, and health practitioners to help prepare you to make a difference to the health and wellbeing of diverse communities.

HEALTH QUALIFICATIONS		
Subject area	Qualification	Years ¹
Health Informatics	Bachelor of Health	3
Health Leadership and Management	Postgraduate Diploma in Health	1
	Master of Health	1
Health Policy, Planning, and Service Delivery	Postgraduate Diploma in Health	1
	Master of Health	1
Health Promotion	Bachelor of Health	3
	Postgraduate Diploma in Health	1
	Master of Health	1
Health Psychology	Bachelor of Health	3
	Postgraduate Diploma in Health Psychology Master of Health Psychology	1 2
Health Research	Master of Health Research	1
Midwifery	Bachelor of Midwifery	4
Nursing	Postgraduate Diploma in Health	1
	Master of Health	1
	Master of Nursing Practice	2
Population Health, Policy, and Service Delivery	Bachelor of Health	3
Professional Practice	Postgraduate Diploma in Health	1
	Master of Health	1
Workplace Health and Safety	Postgraduate Diploma in Health	1
	Master of Health	1

¹One year = two or three trimesters.

The Postgraduate Diploma in Health and Master of Health can also be studied without any specialisation.

PhD study is possible in subjects in which expert supervision is available.

For more information, see pages 20-21.



HUMANITIES AND SOCIAL SCIENCES

THINK CRITICALLY AND CREATIVELY

Broaden your knowledge in New Zealand's creative and cultural capital, where you will be at the centre of politics, culture, foreign embassies, and the public service.

LEARN FROM THE BEST

Our university is ranked in the top 200 universities worldwide for arts and humanities, anthropology, development studies, English language and literature, history, linguistics, modern languages, performing arts, politics and international studies, religious studies, and sociology (QS World University Rankings 2023).



"Wellington is New Zealand's political and diplomatic hub and, given the openness of New Zealand politics, a very accessible one. Studying Politics and International Relations at Victoria University of Wellington has been so much more relevant and meaningful, knowing that down the road, debates are happening in the House [Parliament], bills are being passed, and state visits are taking place."

Darryn Ooi

Graduate, Bachelor of Arts in Philosophy, Politics, and International Relations
Graduate, Bachelor of Laws with Honours

INDUSTRY CONNECTIONS

Many programmes have connections in Wellington that create unrivalled opportunities for students to engage in. These include Archives New Zealand, the Government and Parliament, the Museum of New Zealand Te Papa Tongarewa, the New Zealand Film Archive, professional and amateur theatre, and the city's thriving digital and film industries.

HUMANITIES AND SOCIAL SCIENCES QUALIFICATIONS							
Subject area	Bachelor of Arts ²	Graduate Diploma in Arts	Postgraduate Diploma in Arts	Bachelor of Arts with Honours	Master of Arts ³	PhD	Other qualifications
Years ¹	3	1	1	1	1	3-4	1
Applied Linguistics ⁴					•	•	Master of Applied Linguistics ⁵ Master of TESOL ⁵
Art History	•	•	•	•	•	•	Postgraduate Diploma in Museum and Heritage Practice Master of Museum and Heritage Practice
Asian Studies	•	•	•	•	•	•	
Chinese	•	•	•	•	•	•	
Classical Studies / Classics	•	•	•	•	•	•	
Creative Writing ⁴	•				•	•	
Criminology	•	•	•	•	•	•	Master of Criminology
Cultural Anthropology	•	•	•	•	•	•	
Development Studies ⁶	•	•					
Economics ⁵	•	•	•	•	•	•	Master of Philosophy, Politics, and Economics
Education	•	•	•	•	•	•	Master of Education
Education and Psychology ⁶	•	•					Master of Educational Psychology
English (Literature)	•	•	•	•	•	•	
Film	•	•	•	•	•	•	Master of Fine Arts (Creative Practice)
French	•	•	•	•	•	•	
Geography ⁶	•	•	•	•	•	•	

German	•	•	•	•	•	•	
Greek	•	•	•	•	•	•	
History	•	•	•	•	•	•	
Indigenous Studies							Postgraduate Diploma in Indigenous Studies Master of Indigenous Studies
International Relations	•	•	•	•	•	•	Postgraduate Diploma in International Relations Master of International Relations Master of International Trade
Italian	•	•	•	•	•	•	
Japanese	•	•	•	•	•	•	
Latin	•	•	•	•	•	•	
Linguistics	•	•	•	•	•	•	Master of Applied Linguistics ⁵ Master of TESOL ⁵
Māori Resource Management	•	•					
Māori Studies	•	•	•	•	•	•	
Mathematics ⁶	•	•	•	•	•	•	
Media Studies	•	•	•	•	•	•	Bachelor of Communication (3 years) Postgraduate Diploma in Communication Master of Communication
Modern Language Studies	•	•	•	•	•	•	Postgraduate Diploma in Intercultural Communication and Applied Translation Master of Intercultural Communication and Applied Translation
Museum and Heritage Studies					•	•	Postgraduate Diploma in Museum and Heritage Practice Master of Museum and Heritage Practice
Music	•	•	•	•	•	•	For specialist qualifications, see the Music Qualifications table at right. Master of Fine Arts (Creative Practice)
Pacific Studies	•	•	•	•	•	•	
Philosophy	•	•	•	•	•	•	Master of Philosophy, Politics, and Economics
Political Science	•	•	•	•	•	•	Master of Philosophy, Politics, and Economics Master of Political Science
Psychology ⁶	•	•	•	•	•	•	
Public Policy ⁵	•	•	•	•	•	•	
Religious Studies	•	•	•	•	•	•	
Sāmoan Studies / Mataupu tau Sāmoa	•	•	•	•	•	•	
Sociology	•	•	•	•	•	•	
Spanish	•	•	•	•	•	•	
Strategic Studies							Postgraduate Diploma in Strategic Studies Master of Strategic Studies
Te Reo Māori	•	•	•	•	•	•	
TESOL	•	•	•	•	•	•	Master of Applied Linguistics ⁵ Master of TESOL ⁵
Theatre	•	•	•	•	•	•	Master of Fine Arts (Creative Practice)
Translation							Postgraduate Diploma in Intercultural Communication and Applied Translation Master of Intercultural Communication and Applied Translation

¹One year = two or three trimesters.

²Minors are also available in Creative Writing, Data Science, Gender and Sexuality Studies, New Zealand Sign Language (NZSL), Popular Music Studies, and Social Policy.

³A Master of Arts can be completed in one year of study/research only after an Honours year in the same subject area, or equivalent.

⁴Courses are available at undergraduate level in these subjects, but the subjects are not Bachelor of Arts majors.

⁵The Master of TESOL and Master of Applied Linguistics may be available in part by distance learning.

⁶These subjects are offered for Wellington Faculty of Humanities and Social Sciences qualifications, but are taught by other faculties.

For more information, see pages 22-25.

COMMUNICATION QUALIFICATIONS

Subject area	Bachelor of Communication	Postgraduate Diploma in Communication	Master of Communication	PhD	Other qualifications
Years ¹	3	1	1	3-4	
Intercultural Communication	•	•	•	•	Postgraduate Diploma in Intercultural Communication and Applied Translation (1 year) Master of Intercultural Communication and Applied Translation (1 year)
Literary and Creative Communication	•	•	•	•	
Media Studies	•	•	•	•	Bachelor of Arts (3 years)
Political Communication	•	•	•	•	
Science Communication	•	•	•	•	Bachelor of Science (3 years)

¹One year = two or three trimesters.

For more information, see pages 22-25.

MUSIC QUALIFICATIONS

Subject area	Bachelor of Music ²	Graduate Diploma in Music	Postgraduate Diploma in Music	Bachelor of Music with Honours	Master of Music	Master of Musical Arts	PhD	Other qualifications
Years ¹	3	1	1	1	1	1	3-4	
Classical Performance ³	•	•	•	•	•	•	•	
Composition (Instrumental and Vocal)	•	•	•	•	•	•	•	Master of Fine Arts (Creative Practice) (1 year)
Jazz Performance	•	•	•	•	•	•	•	
Music Studies	•	•		•	•			
Music Therapy								Master of Music Therapy (2 years)
Sonic Arts and Music Technology	•	•	•	•	•	•	•	Master of Fine Arts (Creative Practice) (1 year)

¹One year = two or three trimesters.

²Minors are also available in Composition, Music Technology, Performance, and Popular Music Studies.

³Performance students are selected by audition.

For more information, see pages 22-25.

SCAN ME





LEAD THE CHANGE

Advance your knowledge of law at a capital-city law school with a global outlook—right in the legal and political heart of New Zealand.

LEARN FROM THE BEST

Our Law School is frequently ranked among the top 100 law schools in the world, and our faculty is in a privileged position to inform thinking and lead debate on legal, policy, and governance issues in New Zealand and beyond.

We hold public lectures and seminars in collaboration with legal professionals, the judiciary, domestic and international experts on current issues, and our two leading research centres: the New Zealand Centre of International Economic Law and the New Zealand Centre for Public Law.



“As a law student, you’re just across the road from the Beehive, the seat of the New Zealand Government, and the courts, so you’re very close to all the action. There are a range of courses to choose from, including an opportunity to complete an internship in a firm, office, court, or government department. I was an international student, and the internship gave me some much-needed insights into the practice of law in New Zealand.”

Nilu Ariyaratne

Graduate, Master of Laws

REAL-WORLD EXPERIENCE

Because our campus is close to New Zealand’s Parliament and the district, high, and supreme courts, it makes for a unique centre for students, researchers, policymakers, and practitioners.

Student-led seminars provide a forum for analysis of current legal issues and result in a substantial body of research. Some of this is published in the Faculty’s journals, the *Victoria University of Wellington Law Review* and the *New Zealand Journal of Public and International Law*, and other academic journals.

LAW QUALIFICATIONS		
Subject area	Qualification	Years ¹
Law	Bachelor of Laws ²	4
	Bachelor of Laws with Honours ³	4
	Graduate Certificate in Law ⁴	0.5–1
	Master of Laws by coursework ⁵	1.5
	Master of Laws by coursework and dissertation (35,000 words) ⁵	1–1.5
	Master of Laws by thesis (50,000 words) ⁵	1–1.5
	Master of International Trade	1.5
	PhD	3–4

¹One year = two or three trimesters.

²Entry into the second year is competitive, based on grades in the first year.

³The Honours programme runs parallel to the Bachelor of Laws in its third and fourth years—entry is by invitation after high achievement in second year.

⁴If you’re a legal practitioner from overseas who needs to meet New Zealand Council of Legal Education requirements, the Graduate Certificate of Law will help you meet them.

⁵The Master of Laws is usually taken to focus on a specific aspect of law—it does not entitle a graduate to practise law in New Zealand. For information on obtaining a practising certificate, go to www.nzcle.org.nz

For more information, see pages 24–25.

SCAN ME



STAND ON THE EDGE OF DISCOVERY

Gain real-world industry experience while you study in New Zealand’s science capital.

LEARN FROM THE BEST

The Wellington Faculty of Science is led by staff at the cutting edge of discovery, with Development Studies, Earth and Marine Sciences, Geography, and Psychology ranked in the world’s top 150 in the 2023 QS World University Rankings by Subject.

LEADING RESEARCH

Several noteworthy research centres and institutes are based at the University. These include the MacDiarmid Institute for Nanotechnology and Advanced Materials, the Malaghan Institute for Medical Research—New Zealand’s top research institute in material science and largest private medical research institute—and the Antarctic Research Centre, a leading research group on Antarctic research and the global climate system.

INDUSTRY CONNECTIONS

The Industry Alliance Programme supports the delivery of several of our industry-focused postgraduate degrees built on connections between the University and local industry—providing industry-relevant skills and experience with real-world projects.

SCIENCE QUALIFICATIONS									
Subject area	Bachelor of Science ²	Bachelor of Biomedical Science	Bachelor of Psychology	Graduate Diploma in Science	Postgraduate Diploma in Science	Bachelor of Science with Honours	Master of Science	PhD	Other qualifications
Years ¹	3	3	3	1	1	1	1–2	3–4	
Actuarial Science	•			•					Master of Actuarial Science (1 year)
Applied Statistics									Master of Applied Statistics (1 year)
Artificial Intelligence	•			•	•	•	•	•	Master of Artificial Intelligence (1 year)
Biology	•			•					
Biotechnology	•			•	•	•	•	•	
Brain Sciences and Mental Health			•						
Cell and Molecular Bioscience	•			•	•	•	•	•	
Chemistry	•			•	•	•	•	•	
Clinical Immunology									Master of Clinical Immunology (1 year)
Clinical Research									• Postgraduate Diploma in Clinical Research (1 year) Master of Clinical Research (1 year)
Cognitive Science			•						
Computer Graphics and Games	•			•	•	•	•	•	
Computer Science	•			•	•	•	•	•	Master of Computer Science (1 year)
Conservation Biology					•	•	•	•	Master of Conservation Biology (1 year)
Criminal Justice and Psychology			•						
Data Science	•			•	•	•	•	•	Master of Data Science (2 years)
Development Studies	•			•			•	•	Postgraduate Diploma in Development Studies (1 year) Master of Development Studies (1 year)
Drug Discovery and Development									Postgraduate Diploma in Drug Discovery and Development (1 year) Master of Drug Discovery and Development (1–2 years ³)
Ecological Restoration					•		•	•	
Ecology and Biodiversity	•			•	•	•	•	•	
Educational Psychology			•						
Electronic and Computer Systems	•			•	•	•	•	•	
Environmental Science ⁴	•			•	•		•	•	Master of Environmental Science

SCIENCE QUALIFICATIONS									
Subject area	Bachelor of Science ²	Bachelor of Biomedical Science	Bachelor of Psychology	Graduate Diploma in Science	Postgraduate Diploma in Science	Bachelor of Science with Honours	Master of Science	PhD	Other qualifications
Years ¹	3	3	3	1	1	1	1-2	3-4	
Environmental Studies	•			•				•	Postgraduate Diploma in Environmental Studies (1 year) Master of Environmental Studies (1-2 years ³)
Geography	•			•	•	•	•	•	
Geology	•			•	•	•	•	•	
Geophysics					•	•	•	•	
Health Psychology			•						
Human Genetics		•							Bachelor of Biomedical Science with Honours (1 year) Postgraduate Diploma in Biomedical Science (1 year) Master of Biomedical Science (1-2 years)
Information Systems	•								
Māori Psychology			•						
Marine Biology	•			•	•	•	•	•	
Marine Conservation								•	Master of Marine Conservation (1-1.5 years ⁵)
Mathematics	•			•	•	•	•	•	
Mental Health: Principles and Applications			•						
Molecular Microbiology					•	•	•	•	
Molecular Pathology		•							Bachelor of Biomedical Science with Honours (1 year) Postgraduate Diploma in Biomedical Science (1 year) Master of Biomedical Science (1-2 years)
Molecular Pharmacology and Medicinal Chemistry		•							Bachelor of Biomedical Science with Honours (1 year) Postgraduate Diploma in Biomedical Science (1 year) Master of Biomedical Science (1-2 years)
Physical Geography								•	
Physics	•			•	•	•	•	•	
Psychology / Psychological Science	•		•	•	•	•	•	•	Postgraduate Diploma in Clinical Psychology (3 years) Master of Science in Cognitive and Behavioural Neuroscience (2 years ⁶) Master of Science in Cross-Cultural Psychology (2 years ⁶) Master of Science in Forensic Psychology (2 years ⁶)
Science Communication ⁴	•			•					
Science in Society					•		•	•	Master of Science in Society (1 year)
Space Science	•			•					
Statistics	•			•	•	•	•	•	Master of Applied Statistics (1.5-2 years)
Work and Organisational Psychology			•						



“I’m loving being in this environment. Most of the time, I’m just sitting in the School of Biological Sciences surrounded by so many biologists from different fields, and you have nice, interesting conversations, and you can make friends really easily.”

“My research might have the potential to have such a big impact, or not—we just don’t know yet. When it comes to biology, every little step on the journey is important.”

Lisa Wolf
Student, Master of Science

¹One year = two or three trimesters.

²Minor is also available in Science in Society.

³Can be completed in one or two years depending on academic background.

⁴The Environmental Science and Science Communication majors must be taken alongside another major or minor from the BSc or BBmedSc degrees. The Science in Society minor does not fulfil this requirement.

⁵January or June start; can be completed in 1 or 1.5 years depending on background.

⁶The first year of this degree is also offered as a Postgraduate Diploma in Science.

For more information, see pages 24–27.



AN INSPIRING RESEARCH ENVIRONMENT

Victoria University of Wellington offers PhD candidates a thriving and focused academic experience. Our partnerships help build the capability of researchers, delivering knowledge and understanding that improve social, cultural, and economic outcomes in the Asia-Pacific region.

OUR RESEARCH IS WORLD LEADING

The University has research strengths in many areas, including business and government, culture and creativity, design and manufacturing, health and wellbeing, science and digital engineering, and sustainability and resilience.

We have researchers of national and international repute working at the forefront of knowledge in a diverse range of disciplines. Our researchers win major grants in highly competitive environments and publish regularly in leading international journals and with top academic publishers.

Our state-of-the-art technical resources help facilitate the research by staff and students, together with a range of international research services and access to collaborative networks.

#1 IN RESEARCH INTENSITY*

Aside from having strong partnerships with four national Centres of Research Excellence, the University is home to more than 40 world-leading research institutes and centres that have significant roles in graduate teaching and research. These include the:

- ▶ Centre for Strategic Studies
- ▶ Ferrier Research Institute
- ▶ International Institute of Modern Letters
- ▶ MacDiarmid Institute for Advanced Materials and Nanotechnology
- ▶ Malaghan Institute of Medical Research
- ▶ New Zealand Climate Change Institute
- ▶ New Zealand Contemporary China Research Centre
- ▶ New Zealand India Research Institute
- ▶ Wellington University Coastal Ecology Laboratory.

*Victoria University of Wellington has been the top-ranked university in New Zealand since 2012, as measured by the six-yearly Performance-Based Research Funding (PBRF) evaluation exercise run by the New Zealand Tertiary Education Commission.



“I considered all reputed international options and zeroed in on Victoria University of Wellington as the perfect choice for further studies. The emphasis on original research and critical thinking made Victoria University of Wellington the natural and only choice for me.”

Prakriti Bhatt

Candidate, Doctor of Philosophy in Law
Wellington Doctoral Scholarship recipient

STUDY FOR YOUR PhD WITH US

Whatever your aspirations, we can offer you a postgraduate programme that will widen your skills and deepen your knowledge in your chosen subject.

Benefits of a PhD in New Zealand

- ▶ International students pay the same fees as domestic students.
- ▶ Enjoy excellent work rights both during and after your PhD.
- ▶ Partners can apply for an open work visa.
- ▶ Children can enrol in New Zealand state schools.

Application information

Apply for your PhD through the Wellington Faculty of Graduate Research. Scan the code for more information about PhD degrees, admission requirements, contacting potential supervisors, the application process, and scholarship funding.

Applications are considered in three rounds each year, with closing dates of: 1 March, 1 July, and 1 November.



PROGRAMME	Intake (start date) ¹	Estimated duration ²		Total points for full qualification	Estimated tuition fees 2024 (NZ\$) ⁴		Coursework (C) and/or research (R)	Minimum general entry requirements <i>This is a guideline only. See our website for more information.</i>	
		Trimesters	Years ³		Per 120 points	For full programme			
PATHWAY PROGRAMMES AND STUDY ABROAD									
English for Academic Purposes (EAP)	Feb, Jun, Sep	12 weeks ⁵	–	60	–	\$6,750 per 60 points; total programme duration varies per student	C	You need to have a pre-intermediate level of English before beginning this course—at least Duolingo 70, IELTS 4.5, or TOEFL iBT 34. You will need to submit your English test results with your application. Your English test results will indicate how many English courses you need to enrol in. If you do not have English test results, contact eli@vuw.ac.nz	
Foundation Studies (delivered by UP Education)	Jan, Apr, Jul, Oct	–	6, 9, 12, or 18 months	–	–	Total programme duration varies per student	C	Go to http://wgtn.up.education	
Study Abroad	Feb, Jul	1 or 2	0.5 or 1	–	–	\$13,500 per trimester	\$13,500 per trimester	C	For undergraduate Study Abroad: completion of at least one year of undergraduate study at a recognised tertiary institution with above-average grades. For postgraduate Study Abroad students: an equivalent of a New Zealand Bachelor's degree is required. For First Year Study Abroad: relevant country Bachelor's degree admission requirements.
ARCHITECTURE AND DESIGN INNOVATION									
Bachelor of Architectural Studies	Feb	6	3	360	–	\$40,000	–	C	See 'Minimum Academic Requirements for Undergraduate Admission' on page 31. Entry into the second year is competitive and is based on first-year results.
Bachelor of Building Science	Feb, Jul	6	3	360	–	\$40,000	–	C	See 'Minimum Academic Requirements for Undergraduate Admission' on page 31.
Bachelor of Design Innovation	Feb, Jul	6	3	360	–	\$38,400	–	C	See 'Minimum Academic Requirements for Undergraduate Admission' on page 31. Entry into the second year is competitive and is based on first-year results.
Graduate Diploma in Design Innovation	Feb	2	1	120	–	\$38,400	\$38,400	C	A Bachelor's degree or equivalent in a related discipline with at least a B average. A portfolio is required.
Graduate Diploma in Designed Environments	Feb	2	1	120	–	\$40,000	\$40,000	C	A Bachelor's degree or equivalent in a related discipline with at least a B average. A portfolio is required.
Postgraduate Diploma in Architectural Science	Feb	2	1	120	–	\$44,800	\$44,800	C	A Bachelor's degree or equivalent in a related discipline with at least a B average. A portfolio is required. A CV may be requested if the applicant has extensive work experience.
Postgraduate Diploma in Designed Environments	Feb	2	1	120	–	\$44,800	\$44,800	C	A Bachelor's degree or equivalent in a related discipline with at least a B average. A portfolio is required.
Master of Architectural Science	Feb	3	1	180	–	\$44,800	\$67,150	C	A Bachelor's degree in a relevant or related discipline with at least a B average. A portfolio is required. A CV may be requested if the applicant has extensive work experience.
Master of Architectural Science (Research)	Feb	–	1	120	–	\$44,800	\$44,800	R	A Postgraduate diploma in Architectural Science or an equivalent qualification with at least a B average. A portfolio is required.
Master of Architecture (by thesis)	Any time (except Dec and Jan)	–	1	120	–	\$44,800	\$44,800	R	A Bachelor's degree or equivalent in the same subject with at least a B average. A research proposal and portfolio are required. Applicants must identify a potential supervisor before applying.
Master of Architecture (Professional)	Feb	4	2	240	–	\$44,800	–	C+R	A Bachelor's degree or equivalent in the same subject area with at least a B average. A portfolio is required.
Master of Design (by thesis)	Any time	–	1	120	–	\$43,000	\$43,000	R	A Bachelor's degree or equivalent in the same subject area with at least a B average. A research proposal and portfolio are required. Applicants must identify a potential supervisor before applying.
Master of Design Innovation	Feb	4	1.5	180	–	\$43,000	\$64,500	C+R	A Bachelor's degree or equivalent in a related discipline with at least a B average. A portfolio is required.
Master of Design Technology	Feb	3	1	180	–	\$43,000	\$64,500	C	A Bachelor's degree or equivalent in a relevant subject area with at least a B average. A proven aptitude with a 3D computer graphics application is required. A portfolio is required.
Master of Interior Architecture	Feb	4	2	240	–	\$44,800	–	C+R	A Bachelor's degree or equivalent in a relevant subject area with at least a B average. A portfolio is required.
Master of Landscape Architecture	Feb	4	2	240	–	\$44,800	–	C+R	A Bachelor's degree or equivalent in a relevant subject area with at least a B average. A portfolio is required.
Master of Urban and Regional Planning	Feb	4	2	240	–	\$44,800	–	C+R	A Bachelor's degree or equivalent in a relevant subject area with at least a B average. A statement of intent is required.
Master of User Experience Design	Feb	3	1	180	–	\$43,000	\$64,500	C	A Bachelor's degree in a non-design subject with at least a B average. A portfolio is required.
PhD	Any time	–	Minimum 3	360	–	Go to www.wgtn.ac.nz/phd-fees for full details		R	Go to www.wgtn.ac.nz/fgr/prospective-phds
BUSINESS AND GOVERNMENT									
Bachelor of Commerce	Feb, Jul, Nov	6	3	360	–	\$33,750	–	C	See 'Minimum Academic Requirements for Undergraduate Admission' on page 31.
Graduate Diploma in Commerce	Feb, Jul, Nov	2	1	120	–	\$33,750	\$33,750	C	A Bachelor of Commerce degree or equivalent. Limited courses offered in the November intake.
Bachelor of Commerce with Honours	Feb	2	1	120	–	\$35,550	\$35,550	C+R	A Bachelor's degree or equivalent in the same subject area with at least a B+ average.
Postgraduate Diploma in Actuarial Science	Feb	2	1	120	–	\$39,600	\$39,600	C	A Bachelor's degree or equivalent in actuarial science, finance, statistics, or a related field with at least a B+ average. A CV and statement of intent are required.
Postgraduate Diploma in Public Management	Feb	2	1	120	–	\$35,550	\$35,550	C	A Bachelor's degree or equivalent and at least two years of relevant work experience in the public sector, or extensive work experience. A CV is required.
Postgraduate Diploma in Public Policy	Feb	2	1	120	–	\$35,550	\$35,550	C	A Bachelor's degree or equivalent and at least two years of relevant work experience in the public sector, or extensive work experience. A CV is required.
Executive MBA	Feb	4	2	180	–	\$44,500	\$66,700	C	A Bachelor's degree or equivalent with at least a B average, and five years of relevant work experience. A CV is required.
Master of Actuarial Science	Feb	3	1	180	–	\$40,400	\$60,600	C	A Bachelor's degree or equivalent in actuarial science, finance, statistics, or a related field with at least a B+ average. A CV and statement of intent are required.
Master of Commerce	Feb	3–4	1–1.5	180	–	\$35,550	\$53,300	C+R	A Bachelor's degree or equivalent in the same subject area with at least a B+ average.
Master of Global Business	Nov	3	1	180	–	\$35,550	\$53,300	C	A Bachelor's degree or equivalent with at least a B average.
Master of Professional Accounting (traditional pathway)	Feb, Nov	3	1	180	–	\$33,350	\$50,000	C	A Bachelor's degree or equivalent. This pathway fulfils the academic requirements for professional certification from Chartered Accountants Australia and New Zealand and CPA Australia.
Master of Professional Accounting (chartered accountants pathway)	Feb, Nov	5–6	21–25 months	225	–	\$33,350	–	C	A Bachelor's degree or equivalent. This pathway fulfils the academic and technical requirements for professional certification from Chartered Accountants Australia and New Zealand and the academic requirements of CPA Australia. It also grants nine exemptions from the Association of Chartered Certified Accountants.

¹Starting trimester may vary depending on major subject or specialisation. The duration of some programmes may be affected by your chosen start date.

²These are estimated durations. Durations may vary depending on availability of courses, workload, and a student's capability.

³The University year has three trimesters, starting in February, July, and November. Courses are not available for all programmes in Trimester 3.

⁴Tuition fees are estimated and subject to change. They do not include other costs such as the student services levy and insurance. Go to page 32 for more information.

⁵You may need to take several consecutive courses (20–30 weeks) to reach the required level of English for your intended university degree or programme.

A six-month Graduate Certificate is also available in most subjects.

Online study options are available for some programmes. To learn more, go to www.wgtn.ac.nz/international-online-study

For more information, go to www.wgtn.ac.nz or contact international@vuw.ac.nz

PROGRAMME	Intake (start date) ¹	Estimated duration ²		Total points for full qualification	Estimated tuition fees 2024 (NZ\$) ⁴		Coursework (C) and/or research (R)	Minimum general entry requirements <i>This is a guideline only. See our website for more information.</i>
		Trimesters	Years ³		Per 120 points	For full programme		
Master of Professional Business Analysis	Feb, Nov	4	16 months	180	\$35,550	\$53,300	C	A Bachelor's degree or equivalent with at least a B- average. A CV is required. A statement of intent may be requested.
Master of Public Management	Feb	4	1.5	180	\$35,550	\$53,300	C	A Bachelor's degree or equivalent and at least two years of relevant work experience in the public sector, or extensive work experience. A CV is required.
Master of Public Policy	Feb	4	1.5	180	\$35,550	\$53,300	C+R	A Bachelor's degree or equivalent and at least two years of relevant work experience in the public sector, or extensive work experience. A CV is required.
PhD	Any time	-	Minimum 3	360	Go to www.wgtn.ac.nz/phd-fees for full details		R	Go to www.wgtn.ac.nz/fgr/prospective-phds
EDUCATION								
Bachelor of Education (Teaching) Early Childhood	Feb	6	3	360	\$31,800	-	C	See 'Minimum Academic Requirements for Undergraduate Admission' on page 31. Completion of 'Teacher Education Programme Form for International Students' and provision of police reports are required. IELTS minimum overall band of 7.0 (with no sub-score below 7.0). Contact details of two referees, selection meeting, and a numeracy and literacy assessment are required.
Graduate Diploma of Teaching (Primary or Secondary)	Feb	2	1	150	-	\$41,050	C	A Bachelor's degree or equivalent. Completion of 'Teacher Education Programme Form for International Students' and provision of police reports are required. Applicants must provide an NZQA assessment of their Bachelor's degree. IELTS minimum overall band of 7.0 (with no sub-score below 7.0). Contact details of two referees, selection meeting, and a numeracy and literacy assessment are required. Note the early application deadline of 15 November.
Postgraduate Diploma in Education	Feb, Jul	2	1	120	\$34,750	\$34,750	C	A Bachelor's degree or equivalent with at least a B average, with a major in education, psychology, or a related discipline, or relevant work experience. A CV may be requested.
Master of Education	Feb, Jul	3	1.5	180	\$34,750	\$52,150	C, C+R	A Bachelor's degree or equivalent with at least a B average, with a major in education, psychology, or a related discipline. A CV may be requested.
Master of Educational Psychology	Feb, Jul	4	2	240	\$42,050	-	C	A Bachelor's degree or equivalent in education or psychology with at least a B average, or an approved teacher education degree. A CV may be requested.
PhD	Any time	-	Minimum 3	360	Go to www.wgtn.ac.nz/phd-fees for full details		R	Go to www.wgtn.ac.nz/fgr/prospective-phds
ENGINEERING								
Bachelor of Engineering with Honours	Feb	8	4	480	\$41,750	-	C	See 'Minimum Academic Requirements for Undergraduate Admission' on page 31. To progress into the second part of the programme, you need to have passed all your Part 1 courses with at least a B average.
Master of Artificial Intelligence	Feb	3	1-1.5	180	\$45,300	\$68,000	C+R	A Bachelor's degree or equivalent in computer science or a relevant subject, with at least a B average in relevant final-year courses. A CV and statement of intent are required.
Master of Computer Science	Feb, Jul	3	1-1.5	180	\$42,050	\$63,050	C+R	A Bachelor's degree or equivalent in the same subject area with at least a B average. A CV is required. A statement of intent may be requested.
Master of Engineering (by thesis and coursework)	Feb, Jul	3	1	120	\$45,300	\$45,300	C+R	A Bachelor's degree with Honours or equivalent in the same subject area with at least a B+ average. Applicants must identify a potential supervisor before applying. A CV is required.
Master of Engineering (by thesis)	Any time	3	1	120	\$45,300	\$45,300	R	A Bachelor's degree with Honours or equivalent in the same subject area with at least a B+ average. Applicants must identify a potential supervisor before applying. A CV and statement of research intent are required.
Master of Engineering Practice	Feb, Jul	3	1-1.5	180	\$45,300	\$68,000	C	A Bachelor's degree or equivalent in a related subject area with at least a B+ average.
Master of Renewable Energy	Feb	3	1-1.5	180	\$42,050	\$63,050	C+R	A Bachelor's degree or equivalent with at least a B+ average in the relevant coursework, in engineering or science, or another relevant subject. A CV is required.
Master of Software Development	Jul	3	1	180	\$45,300	\$68,000	C	A Bachelor's degree or equivalent in any subject except computer science or related subjects, with at least a B average. A CV is required.
PhD	Any time	-	Minimum 3	360	Go to www.wgtn.ac.nz/phd-fees for full details		R	Go to www.wgtn.ac.nz/fgr/prospective-phds
HEALTH								
Bachelor of Health	Feb, Jul	6	3	360	\$33,600	-	C	See 'Minimum Academic Requirements for Undergraduate Admission' on page 31.
Bachelor of Midwifery	Feb	8	4	480	\$33,600	-	C	See 'Minimum Academic Requirements for Undergraduate Admission' on page 31. A strong background in biology and chemistry is required to meet the entry standards of the Midwifery Council of New Zealand. An in-person interview is required. IELTS: Minimum overall score of 7.0 with 6.5 or higher in Reading and Writing, and 7.0 in Listening and Speaking.
Postgraduate Diploma in Health	Feb, Jul	2	1	120	\$34,050	\$34,050	C	A Bachelor's degree in a relevant discipline. Nursing and Professional Practice specialisation applicants must be registered health professionals. Midwifery specialisation is not available to international students. A CV and statement of intent are required. Completion of this programme will not lead to registration in New Zealand.
Postgraduate Diploma in Health Psychology	Feb, Jul	2	1	120	\$42,050	\$42,050	C	A Bachelor's degree or equivalent in psychology or health psychology. A CV and statement of intent are required. Completion of this programme will not lead to registration in New Zealand.
Master of Health	Feb, Jul	3	1	180	\$34,050	\$51,050	C+R	A Bachelor's degree in a relevant discipline with an average grade of at least a B. Entry to Part 2 requires the successful completion of Part 1, with an average grade of at least a B and acceptance by the head of school. Nursing and Professional Practice specialisation applicants must be registered health professionals. Midwifery specialisation is not available to international students. A CV and statement of intent are required. Completion of this programme will not lead to registration in New Zealand.
Master of Health Psychology	Feb, Jul	4	2	240	\$42,050	-	C+R	A Bachelor's degree or equivalent in psychology or health psychology with an average grade of at least a B. Entry to Part 2 requires the successful completion of Part 1, with an average grade of at least a B+ and acceptance by the head of school. A CV and statement of intent are required. Completion of this programme will not lead to registration in New Zealand.
Master of Health Research	Any time	-	1	120	\$34,050	\$34,050	R	A Bachelor's degree with Honours or a postgraduate diploma in a health-related subject area, and significant relevant professional experience. A CV, statement of intent, and expression of research interest are required.
Master of Nursing Practice	Feb	4	2	240	\$34,050	-	C	A Bachelor's degree with at least a B+ average in the final year of study. Applicants must meet the entry standards of the Nursing Council of New Zealand. Applicants with a Bachelor's degree outside health sciences may need to complete a formal bridging programme. A CV, statement of intent, and in-person interview are also required. IELTS: Minimum score of 7.0 with no individual score less than 7.0.
PhD	Any time	-	Minimum 3	360	Go to www.wgtn.ac.nz/phd-fees for full details		R	Go to www.wgtn.ac.nz/fgr/prospective-phds

¹Starting trimester may vary depending on major subject or specialisation. The duration of some programmes may be affected by your chosen start date.

²These are estimated durations. Durations may vary depending on availability of courses, workload, and a student's capability.

³The University year has three trimesters, starting in February, July, and November. Courses are not available for all programmes in Trimester 3.

⁴Tuition fees are estimated and subject to change. They do not include other costs such as the student services levy and insurance. Go to page 32 for more information.

A six-month Graduate Certificate is also available in most subjects.

Online study options are available for some programmes. To learn more, go to www.wgtn.ac.nz/international-online-study

For more information, go to www.wgtn.ac.nz or contact international@vuw.ac.nz

PROGRAMME	Intake (start date) ¹	Estimated duration ²		Total points for full qualification	Estimated tuition fees 2024 (NZ\$) ⁴		Coursework (C) and/or Research (R)	Minimum general entry requirements <i>This is a guideline only. See our website for more information.</i>
		Trimesters	Years ³		Per 120 points	For full programme		
HUMANITIES AND SOCIAL SCIENCES								
Bachelor of Arts⁵	Feb, Jul	6	3	360	\$31,800	–	C	See 'Minimum Academic Requirements for Undergraduate Admission' on page 31. Some subjects may have additional requirements and earlier application deadlines.
Bachelor of Communication	Feb, Jul	6	3	360	\$31,800	–	C	See 'Minimum Academic Requirements for Undergraduate Admission' on page 31.
Bachelor of Global Studies	Feb, Jul	6	3	360	\$31,800	–	C	See 'Minimum Academic Requirements for Undergraduate Admission' on page 31.
Bachelor of Music	Feb, Jul	6	3	360	\$38,050	–	C	See 'Minimum Academic Requirements for Undergraduate Admission' on page 31. An audition is required for Classical Performance and Jazz. Qualification duration will be longer if commencing Jazz Performance or Music Studies majors in July.
Graduate Diploma in Arts⁵	Feb, Jul	2	1	120	\$31,800	\$31,800	C	A Bachelor's degree or equivalent. Some subjects may have additional requirements and earlier application deadlines. A statement of intent is required if degree background is in a different area of intended study.
Graduate Diploma in Music	Feb, Jul	2	1	120	\$38,050	\$38,050	C	A Bachelor's degree or equivalent in the same subject area with at least a B average. An audition may be required.
Bachelor of Arts with Honours⁶	Feb, Jul	2	1	120	\$34,750	\$34,750	C	A Bachelor's degree or equivalent in the same subject area with at least a B average.
Bachelor of Music with Honours	Feb, Jul	2	1	120	\$41,000	\$41,000	C	A Bachelor's degree or equivalent in the same subject area with at least a B average. An audition, interview, and/or portfolio may be required.
Postgraduate Diploma in Applied Linguistics	Feb, Jul, Nov	2	1	120	\$34,750	\$34,750	C	A Bachelor's degree or equivalent with at least a B average in either linguistics, education, English language or in another language, or another relevant degree and at least two years of professional experience in language education or another area of applied linguistics. A CV and evidence of work experience (e.g., work letter) are required.
Postgraduate Diploma in Arts	Feb, Jul	2	1	120	\$34,750	\$34,750	C	A Bachelor's degree or equivalent in the same subject area with at least a B average. Some subjects may have additional requirements and earlier application deadlines.
Postgraduate Diploma in Communication	Feb	2	1	120	\$34,750	\$34,750	C	A Bachelor's degree with at least a B average or equivalent in a relevant subject.
Postgraduate Diploma in Indigenous Studies	Feb	2	1	120	\$34,750	\$34,750	C	A Bachelor's degree with at least a B average or equivalent in a relevant subject. A CV is required.
Postgraduate Diploma in Intercultural Communication and Applied Translation	Feb	2	1	120	\$34,750	\$34,750	C	A Bachelor's degree in a relevant subject, or equivalent, with at least a B average, and advanced study in a language other than English.
Postgraduate Diploma in International Relations	Feb	2	1	120	\$34,750	\$34,750	C	A Bachelor's degree or equivalent in the same or related subject field with at least a B average. A statement of intent and CV are required.
Postgraduate Diploma in Linguistics	Feb	2	1	120	\$34,750	\$34,750	C	A Bachelor's degree or equivalent in linguistics or a related subject (as determined by the Linguistics programme director) with at least a B average in relevant courses.
Postgraduate Diploma in Museum and Heritage Practice	Feb	2	1	120	\$34,750	\$34,750	C	A Bachelor's degree or equivalent or in a relevant subject field with at least a B average. A statement of intent, writing sample, and CV are required. Note the strict application deadline of 1 December.
Postgraduate Diploma in Music	Feb, Jul	2	1	120	\$41,000	\$41,000	C	A Bachelor's degree or equivalent in the same subject area with at least a B average. An audition, interview, and/or portfolio may be required.
Postgraduate Diploma in Political Science	Feb	2	1	120	\$34,750	\$34,750	C	A Bachelor's degree or equivalent in the same or related subject field with at least a B average. A statement of intent and CV are required.
Postgraduate Diploma in Strategic Studies	Feb	2	1	120	\$34,750	\$34,750	C	A Bachelor's degree in the same or a related subject field with at least a B average. A statement of intent and CV highlighting any career experience which is broadly related to strategic studies or international relations are required.
Postgraduate Diploma in TESOL	Feb, Jul, Nov	2	1	120	\$34,750	\$34,750	C	A Bachelor's degree or equivalent with at least a B average in either linguistics, education, English language or in another language, or another relevant degree and at least two years of professional experience in language education or a related field. A CV and evidence of work experience (e.g., work letter) are required.
Master of Applied Linguistics	Feb, Jul, Nov	3	1	180	\$34,750	\$52,150	C, C+R	A Bachelor's degree or equivalent with at least a B average in either linguistics, education, English language or in another language, or another relevant degree and at least two years of professional experience in language education or another area of applied linguistics. A CV and evidence of work experience (e.g., work letter) are required.
Master of Arts⁵	Any time	–	1	120	\$34,750	\$34,750	R	A Bachelor's degree with Honours or equivalent in the same subject area with at least a B average.
Master of Communication	Feb	3	1	180	\$34,750	\$52,150	C	A Bachelor's degree with at least a B average or equivalent in a relevant subject.
Master of Criminology	Feb, Jul	3	1	180	\$34,750	\$52,150	C	A Bachelor's degree with at least a B average or equivalent in a relevant subject.
Master of Fine Arts (Creative Practice) in Film or Theatre	Feb	3	1	180	\$38,000	\$57,000	C	A Bachelor's degree in a relevant subject area with at least a B average and extensive experience in a relevant field. The selection process varies depending on the major and an audition, portfolio, interview, CV, and/or reference letters may be required. Note early application deadlines apply—check the website for more information.
Master of Fine Arts (Creative Practice) in Music/Sound	Feb	3	1	180	\$41,000	\$61,500	C	
Master of Indigenous Studies	Feb	3	1	180	\$34,750	\$52,150	C	A Bachelor's degree with at least a B average or equivalent in a relevant subject. A CV is required.
Master of Intercultural Communication and Applied Translation	Feb	3	1	180	\$34,750	\$52,150	C	A Bachelor's degree in a relevant subject with at least a B average and advanced study in a language other than English. A short CV is required.
Master of International Relations	Feb	3	1	180	\$34,750	\$52,150	C, C+R	A Bachelor's degree or equivalent with at least a B average. Undergraduate study must include some advanced study in a relevant subject area. A statement of intent and CV are required.
Master of Museum and Heritage Practice	Feb	3	1	180	\$34,750	\$52,150	C	A Bachelor's degree or equivalent with at least a B average in a relevant subject area. A statement of intent, writing sample, and CV are required. Note the strict application deadline of 1 December.
Master of Music	Any time	–	1	120	\$41,000	\$41,000	C+R, R	A Bachelor of Music with Honours degree or equivalent with at least a high B average in the same subject area with training/experience. An audition and/or portfolio may be required. A statement of research intent, a sample of academic writing, and a CV with names and contact details of two referees are required.
Master of Music Therapy	Feb	4	2	240	\$41,000	–	C+R	A Bachelor's degree relevant to music therapy with strong background in psychology or other approved social science discipline, with at least a B average. A statement of intent, a sample of academic writing, two reference letters, and CV are required. Audition and interview are also required.

¹Starting trimester may vary depending on major subject or specialisation. The duration of some programmes may be affected by your chosen start date.

²These are estimated durations. Durations may vary depending on availability of courses, workload, and a student's capability.

³The University year has three trimesters, starting in February, July, and November. Courses are not available for all programmes in Trimester 3.

⁴Tuition fees are estimated and subject to change. They do not include other costs such as the student services levy and insurance. Go to page 32 for more information.

⁵Fees can differ depending on the subject.

⁶Some Honours subjects do not have a July start.

A six-month Graduate Certificate is also available in most subjects.

Online study options are available for some programmes. To learn more, go to www.wgtn.ac.nz/international-online-study

For more information, go to www.wgtn.ac.nz or contact international@vuw.ac.nz

PROGRAMME	Intake (start date) ¹	Estimated duration ²		Total points for full qualification	Estimated tuition fees 2024 (NZ\$) ⁴		Coursework (C) and/or research (R)	Minimum general entry requirements <i>This is a guideline only. See our website for more information.</i>
		Trimesters	Years ³		Per 120 points	For full programme		
Master of Musical Arts	Feb, Jul	–	1	120	\$41,000	\$41,000	C+R	A Bachelor's degree with Honours or equivalent with at least a B average. An audition and/or portfolio, a statement of intent, and a sample of academic writing are required.
Master of Philosophy, Politics, and Economics	Feb	3	1	180	\$34,750	\$52,150	C+R	A Bachelor's degree or equivalent with at least a B average. Undergraduate study must include some advanced study in relevant subject areas, such as economics, international relations, philosophy, political science, or public policy.
Master of Political Science	Feb	3	1	180	\$34,750	\$52,150	C+R	A Bachelor's degree or equivalent with at least a B average. Undergraduate study must include some advanced study in a relevant subject area, such as strategic studies, international relations, or political science. A statement of intent and CV highlighting any career experience broadly related to political science are required.
Master of Strategic Studies	Feb	3	1	180	\$34,750	\$52,150	C+R	A Bachelor's degree or equivalent with at least a B average. Undergraduate study must include some advanced study in a relevant subject area, such as strategic studies, international relations, or political science. A CV highlighting any career experience broadly related to strategic studies, international relations, or political science is required.
Master of TESOL	Feb, Jul, Nov	3	1	180	\$34,750	\$52,150	C, C+R	A Bachelor's degree or equivalent with at least a B average in either linguistics, education, English language or in another language, or another relevant degree and at least two years of professional experience in language education or a related field. A CV and evidence of work experience (e.g., work letter) are required.
PhD	Any time	–	Minimum 3	360	Go to www.wgtn.ac.nz/phd-fees for full details		R	Go to www.wgtn.ac.nz/fgp/prospective-phds
LAW								
Bachelor of Laws	Feb	8	4	480	\$38,250	–	C	See 'Minimum Academic Requirements for Undergraduate Admission' on page 31. Entry into the second year is competitive and is based on first-year results, and entry into the parallel third- and fourth-year Honours programme is by invitation after high achievement in second year.
Graduate Certificate in Law	Feb, Jul	1	0.5	60	–	\$19,150	C	A Bachelor's degree or equivalent in law. Two academic reference letters, research and writing samples, and a CV are required. If seeking admission to the New Zealand Bar, an NZCLE letter specifying courses is required. IELTS minimum overall band of 7.0 with writing score of 7.0 (no sub-score below 6.5) or equivalent.
Master of International Trade	Feb	3	1	180	\$36,500	\$54,750	C	A Bachelor's degree or equivalent with at least a B average. A statement of intent and CV are required. IELTS minimum overall band of 7.0 with writing score of 7.0 (no sub-score below 6.5) or equivalent.
Master of Laws (by coursework)	Feb, Jul	2–3	1	120	\$40,400	\$40,400	C	A Bachelor's degree or equivalent in law or postgraduate degree in law with Honours. Two academic reference letters, research and writing samples, and a CV are required. IELTS minimum overall band of 7.0 (no sub-score below 6.5) or equivalent.
Master of Laws (by thesis)	Feb, Jul	2–3	1	120	\$40,400	\$40,400	R	A Bachelor's degree or equivalent in law or postgraduate degree in law with Honours with at least a B average. Two academic reference letters, research and writing samples, and a CV are required. IELTS minimum overall band of 7.0 with writing score of 7.0 (no sub-score below 6.5) or equivalent.
Master of Laws (by dissertation and coursework)	Feb, Jul	2–3	1	120	\$40,400	\$40,400	C+R	A Bachelor's degree or equivalent in law or postgraduate degree in law with Honours with at least a B average. Two academic reference letters, research and writing samples, and a CV are required. IELTS minimum overall band of 7.0 with writing score of 7.0 (no sub-score below 6.5) or equivalent.
PhD	Any time	–	Minimum 3	360	Go to www.wgtn.ac.nz/phd-fees for full details		R	Go to www.wgtn.ac.nz/fgp/prospective-phds IELTS with an overall band of 7.0 with writing score of 7.0 (no sub-score below 6.5) or equivalent.
SCIENCE								
Bachelor of Biomedical Science	Feb, Jul	6	3	360	\$36,400	–	C	See 'Minimum Academic Requirements for Undergraduate Admission' on page 31.
Bachelor of Psychology	Feb, Jul	6	3	360	\$36,400	–	C	See 'Minimum Academic Requirements for Undergraduate Admission' on page 31.
Bachelor of Science	Feb, Jul	6	3	360	\$36,400	–	C	See 'Minimum Academic Requirements for Undergraduate Admission' on page 31.
Graduate Diploma in Science	Feb, Jul	2	1	120	\$36,400	\$36,400	C	A Bachelor's degree or equivalent.
Bachelor of Biomedical Science with Honours	Feb, Jul	2	1	120	\$42,050	\$42,050	C+R	A Bachelor's degree or equivalent in the same subject area with at least a B+ average. An academic transcript is required.
Bachelor of Science with Honours⁵	Feb, Jul	2	1	120	\$42,050	\$42,050	C+R	A Bachelor's degree or equivalent in relevant subject area with at least a B+ average.
Postgraduate Diploma in Biomedical Science	Feb, Jul	2	1	120	\$42,050	\$42,050	C	A Bachelor of Biomedical Science degree or equivalent in the same subject area.
Postgraduate Diploma in Clinical Research	Feb	2	1	120	\$46,750	\$46,750	C	A Bachelor's degree or equivalent in the same or related subject area, with at least a B average, preferably with some work experience in clinical research or health sciences. A short CV is required.
Postgraduate Diploma in Development Studies	Feb, Jul	2	1	120	\$42,050	\$42,050	C	A Bachelor's degree or equivalent in a suitable subject with at least a B average (or a degree in any subject with relevant experience). A CV is required.
Postgraduate Diploma in Drug Discovery and Development	Feb, Jul	2	1	120	\$42,050	\$42,050	C+R	A Bachelor's degree or equivalent in chemistry or a relevant life-science subject such as biochemistry, biomedical science, pharmacy, pharmacology, or other relevant subject with at least a B+ average. A statement of intent is required.
Postgraduate Diploma in Environmental Studies	Feb, Jul	2	1	120	\$42,050	\$42,050	C+R	A Bachelor's degree or equivalent in a relevant subject with at least a B average. A statement of intent is required.
Postgraduate Diploma in Science	Feb, Jul	2	1	120	\$42,050	\$42,050	C	A Bachelor's degree or equivalent in the same subject area with at least a B average.
Master of Applied Statistics	Feb, Jul	3	1	180	\$42,050	\$63,050	C+R	A Bachelor's degree or equivalent in a relevant subject area with at least a B average. A statement of intent and CV are required.
Master of Artificial Intelligence	Feb	3	1–1.5	180	\$45,300	\$68,000	C+R	A Bachelor's degree or equivalent in computer science or a relevant subject with at least a B average in relevant final-year courses.

¹Starting trimester may vary depending on major subject or specialisation. The duration of some programmes may be affected by your chosen start date.

²These are estimated durations. Durations may vary depending on availability of courses, workload, and a student's capability.

³The University year has three trimesters, starting in February, July, and November. Courses are not available for all programmes in Trimester 3.

⁴Tuition fees are estimated and subject to change. They do not include other costs such as the student services levy and insurance. Go to page 32 for more information.

⁵Some Honours subjects do not have a July start.

A six-month Graduate Certificate is also available in most subjects.

Online study options are available for some programmes. To learn more, go to www.wgtn.ac.nz/international-online-study. For more information, go to www.wgtn.ac.nz or contact international@vuw.ac.nz

PROGRAMME	Intake (start date) ¹	Estimated duration ²		Total points for full qualification	Estimated tuition fees 2024 (NZ\$) ⁴		Coursework (C) and/or research (R)	Minimum general entry requirements <i>This is a guideline only. See our website for more information.</i>
		Trimesters	Years ³		Per 120 points	For full programme		
Master of Biomedical Science (by coursework and thesis)	Feb, Jul	4	2	240	\$42,050	-	C+R	A Bachelor's degree or equivalent in biomedical science with at least a B+ average. A CV is required. Applicants must identify a potential supervisor before applying. A research proposal developed in consultation with the supervisor is also required. Applicants with a good Bachelor's degree with Honours may be considered for direct entry into Part 2 (thesis programme).
Master of Biomedical Science (by thesis)	Feb, Jul	-	1	120	\$42,050	\$42,050	R	A Bachelor's degree with Honours or equivalent in the same subject area with at least a B+ average. A CV is required. Applicants must identify a potential supervisor before applying. A research proposal developed in consultation with the supervisor is also required.
Master of Climate Change Science and Policy	Feb	3	1	180	\$42,050	\$63,050	C+R	A Bachelor's degree or equivalent in a relevant subject area with at least a B average. A CV is required.
Master of Clinical Immunology	Feb	3	1	180	\$46,750	\$70,150	C+R	A Bachelor's degree or equivalent in a relevant subject area with at least a B average.
Master of Clinical Research	Feb	2	1	120	\$46,750	\$46,750	R	A postgraduate diploma or equivalent in the same or related subject area, with at least a B average, preferably with some work experience in clinical research or health sciences. Applicants must identify a potential supervisor before applying. A short CV is required.
Master of Computer Science	Feb, Jul	3	1-1.5	180	\$42,050	\$63,050	C+R	A Bachelor's degree or equivalent in the same subject area with at least a B average.
Master of Conservation Biology	Jan, Jul	3	1	180	\$37,900 + field trip costs ⁵	\$56,800 + field trip costs ⁵	C+R	A Bachelor's degree or equivalent in a relevant subject with at least a B+ average.
Master of Data Science	Feb, Jul	4 or 3	2 or 1	240 or 180	\$42,050	\$63,050	C+R	A Bachelor's degree in data science, computer science, or statistics, with at least a B+ average. Applicants with a major in data science or a double major in computer science and statistics may be exempted from Part 1 (60 points). A statement of intent and CV are required.
Master of Development Studies	Feb, Jul	3	1	180	\$42,050	\$63,050	C	A Bachelor's degree or equivalent in a suitable subject with at least a B average (or a degree in any subject with relevant experience). A CV is required.
Master of Drug Discovery and Development	Feb, Jul	3	1	180	\$42,050	\$63,050	C+R	A Bachelor's degree or equivalent in chemistry or a relevant life-science subject, such as biochemistry, biomedical science, pharmacy, pharmacology, with at least a B+ average. A CV and a statement of intent are required. A selection interview (via Zoom) may be required.
Master of Environmental Science	Feb	3	1	180	\$42,050	\$63,050	C+R	A Bachelor's degree in biology, chemistry, earth science, environmental science, mathematics, physics, or equivalent, with at least a B average.
Master of Environmental Studies	Feb, Jul	4	2	240	\$42,050	-	C+R	A Bachelor's degree or equivalent in a relevant subject area with at least a B average. A statement of intent is required.
Master of Marine Conservation	Jan, Jun	3	1	180	\$37,900 + field trip costs ⁵	\$56,800 + field trip costs ⁵	C	A Bachelor's degree or equivalent in the biological sciences with at least a B+ average. Applicants with an Honours degree or equivalent may be admitted to a shorter programme. A CV is required.
Master of Renewable Energy	Feb	3	1-1.5	180	\$42,050	\$63,050	C+R	A Bachelor's degree or equivalent with at least a B+ average in the relevant coursework, in engineering or science, or another relevant subject.
Master of Science (by coursework and thesis)	Feb, Jul	4	2	240	\$42,050	-	C+R	A Bachelor's degree or equivalent in the same subject area with at least a B+ average. Specific psychology majors require at least an A- average grade, a CV, and a statement of intent. Applicants must identify a potential supervisor before applying. A research proposal developed in consultation with the supervisor is required. Applicants with a Bachelor's degree with Honours may be considered for direct entry into second year.
Master of Science (by thesis)	Any time	-	1	120	\$42,050	\$42,050	R	A Bachelor's degree with Honours or equivalent in the same subject area with at least a B average. Applicants must identify a potential supervisor before applying. A research proposal developed in consultation with the supervisor is required.
Master of Science in Society	Feb	3	1	180	\$42,050	\$63,050	C+R	A Bachelor's degree or equivalent in a relevant subject area with at least a B+ average. A CV is required.
PhD	Any time	-	Minimum 3	360	Go to www.wgtn.ac.nz/phd-fees for full details		R	Go to www.wgtn.ac.nz/fgr/prospective-phds

¹Starting trimester may vary depending on major subject or specialisation. The duration of some programmes may be affected by your chosen start date.

²These are estimated durations. Durations may vary depending on availability of courses, workload, and a student's capability.

³The University year has three trimesters, starting in February, July, and November. Courses are not available for all programmes in Trimester 3.

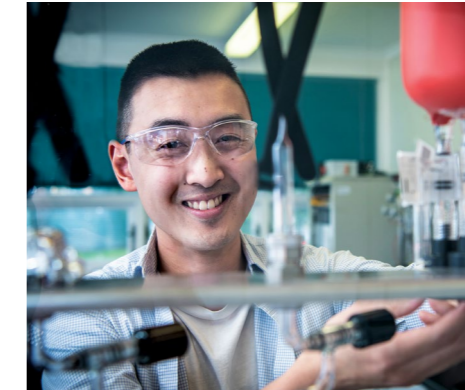
⁴Tuition fees are estimated and subject to change. They do not include other costs such as the student services levy and insurance. Go to page 32 for more information.

⁵Costs associated with field trips are not included in these fee estimates. In particular, there are substantial extra costs for field trips for the Master of Conservation Biology and the Master of Marine Conservation.

A six-month Graduate Certificate is also available in most subjects.

Online study options are available for some programmes. To learn more, go to www.wgtn.ac.nz/international-online-study

For more information, go to www.wgtn.ac.nz or contact international@vuw.ac.nz



SCHOLARSHIPS

Victoria University of Wellington provides a range of scholarships that recognise and encourage high achievement and leadership. They are available for international students at all study levels. More than NZ\$12 million in scholarships are awarded each year.

- ▶ Tongarewa Scholarship of either NZ\$5,000 or NZ\$10,000 (for international students who completed secondary school outside New Zealand)
- ▶ Wellington International Excellence Scholarship of NZ\$20,000 (for international students who completed secondary school in New Zealand)
- ▶ Wellington Doctoral Scholarships
- ▶ Manaaki New Zealand Scholarships funded by the New Zealand Government



"I always wanted to study in an English-speaking country that has different cultures so that I could experience new perspectives. I instantly fell in love with Victoria University of Wellington. I worked hard to get scholarships to make my dream come true, and I'm glad to say that my hard work paid off!"

Anis Aqeelah Afrina

Student, Bachelor of Commerce in Actuarial Science and Finance

STUDENT SERVICES

INTERNATIONAL STUDENT SERVICES

International students at Victoria University of Wellington receive dedicated support before and while they are studying. Our international teams are here to help you when you first apply until you graduate. Services include:

- ▶ international applications and admissions
- ▶ an arrival meeting service
- ▶ insurance claim support
- ▶ the International Buddy Programme
- ▶ international student events
- ▶ personal, cultural, and academic support and referral
- ▶ student visa support.

www.wgtn.ac.nz/international

CAREERS AND EMPLOYMENT

Our Wellington Careers and Employment team can help you apply for jobs and internships, offering professional advice on career planning, job exploration, and career development. They also run free workshops on CVs, cover letters, interview tips, and other career-related topics.

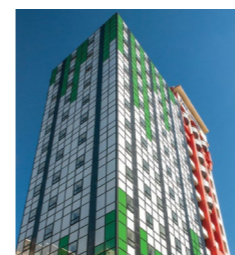
www.wgtn.ac.nz/careers

SERVICES AND FACILITIES ON CAMPUS

- ▶ Adam Art Gallery
- ▶ Bookshop
- ▶ Cafés
- ▶ Campus safety office
- ▶ Careers and Employment
- ▶ Chaplaincies
- ▶ Disability Services
- ▶ Early childhood education services
- ▶ Enrolment Office
- ▶ Financial support and advice
- ▶ Information/help desks
- ▶ IT services
- ▶ LGBTQIA+ support services
- ▶ Library
- ▶ Pharmacy
- ▶ Student Counselling
- ▶ Student Health
- ▶ Student Islamic centre (prayer rooms)
- ▶ Student Job Search
- ▶ Student Learning
- ▶ Te Herenga Waka marae
- ▶ University Accommodation Wellington
- ▶ University Recreation Wellington
- ▶ Victoria University of Wellington Students' Association (VUWSA)
- ▶ Wellington Global Exchange
- ▶ Wellington University International

ACCOMMODATION

Our halls of residence provide a safe, comfortable, and supportive living environment. Most university accommodation is within walking distance from each campus and the city centre. The University offers various accommodation to suit your style of living. Here are some options:



BOULCOTT HALL



A high-rise building close to the heart of the city with an engaged student community.

- ▶ Single rooms
- ▶ From \$426 per week
- ▶ 10–15 minutes' walk to each campus



EVERTON HALL



A pleasant hillside setting beside the cable car for non-first-year students.

- ▶ Single and double rooms in five-bedroom apartments
- ▶ From \$262 per week plus electricity
- ▶ 5–20 minutes' walk to each campus

LIVING COSTS

Your living costs will depend on your needs and habits. For 20 weeks (one trimester) in Wellington, you might need:

- ▶ essential living costs (keeping it basic but comfortable): NZ\$10,000
- ▶ generous living costs (weekend trips and enjoying the nightlife): NZ\$14,500.



TE PUNI VILLAGE



A multi-level complex on Kelburn campus with stunning views from its communal areas.

- ▶ Single, apartment single, or single studio
- ▶ From \$498 per week
- ▶ 2–25 minutes' walk to each campus



WEIR HOUSE



The historic Weir House, opened in 1933, provides a vibrant community with a strong academic focus.

- ▶ Single, set, or twin-share rooms
- ▶ From \$360 per week
- ▶ 5–20 minutes' walk to each campus

KEY

- ▶ Catered hall
- ▶ Self-catered hall
- ▶ Music room
- ▶ Games room
- ▶ Disabled access
- ▶ WiFi available
- ▶ Room type
- ▶ Weekly rate*
- ▶ Walking distance to campuses

*Weekly rate includes most utilities. Rates are subject to change and may vary for 2024.

FIND OUT MORE

To find out more about our accommodation, go to our website.

www.wgtn.ac.nz/accommodation/halls/profiles



ENTRY REQUIREMENTS



To study at Victoria University of Wellington, you will need to meet the academic and English-language entry requirements for your chosen programme of study.

ACADEMIC REQUIREMENTS

Minimum entry requirements are noted for each programme on pages 18–27. These are a guideline only, and some programmes may require higher entry requirements and/or additional application materials. Check the programme pages on our website.

www.wgtn.ac.nz/international/programmes

Undergraduate entry requirements

Academic entry requirements for undergraduate study vary from country to country. For more information, refer to the 'Minimum Academic Requirements for Undergraduate Admission' on the next page or on our website.

www.wgtn.ac.nz/international-entry-requirements

Graduate entry requirements

Graduate certificates and diplomas require a New Zealand Bachelor's degree or equivalent.

Postgraduate entry requirements

You need a Bachelor's degree with at least a B average unless stated otherwise in the programme's minimum general entry requirements. A background in a particular subject area or extensive relevant work experience may be required. Students with equivalent international qualifications from a recognised institution are encouraged to apply.

Each application is assessed individually, and entry into postgraduate programmes is at the discretion of the programme director. For more information, find your chosen programme on our website.

www.wgtn.ac.nz/international/programmes



SCAN ME

MINIMUM ACADEMIC REQUIREMENTS FOR UNDERGRADUATE ADMISSION

A LEVELS

United Kingdom: Three GCE Advanced Level passes at grade C or higher.
Outside the UK: Three GCE Advanced Level passes; one subject must be at grade C or higher.

INTERNATIONAL BACCALAUREATE

Achievement of the Diploma. A grade of 3 or higher in Higher Level English A or B; or a grade of 5 or higher in Standard Level English A fulfils the English-language requirement.

NEW ZEALAND

Entry from National Certificate of Educational Achievement (NCEA) requires the following:

- ▶ attained NCEA Level 3
- ▶ achieved 14 credits at NCEA Level 3 in each of three subjects from the list of approved subjects
- ▶ achieved University Entrance Literacy requirements: 10 credits at Level 2 or higher, made up of 5 credits in reading and 5 credits in writing from specific standards
- ▶ achieved University Entrance Numeracy requirements: 10 credits at Level 1 or higher from specific achievement standards, or three specific numeracy unit standards.

For more information, go to www.nzqa.govt.nz/qualifications-standards/awards/university-entrance

Successful completion of a New Zealand university foundation programme—for grade requirements, contact the International Admissions team at international@vuw.ac.nz

Successful completion of a one-year qualification rated Level 4 or higher by the New Zealand Qualifications Authority and taught by a New Zealand polytechnic or university; or successful completion of one year of full-time study towards such a qualification, with at least a B average

Cambridge Assessment International Education (CAIE, New Zealand)

Gain a minimum of 120 points on the New Zealand Tariff Score table, and a minimum grade of D in each of at least three subjects equivalent to those in the approved subjects list for NCEA at AS or A level. Gain a minimum D pass in IGCSE Mathematics and a minimum E pass in AS English Language or AS English Literature

AUSTRALIA Completion of Year 12 with an ATAR of 69.9 or better (Queensland Overall Position of 14 or lower)—if taken in Australia

BRAZIL Successful completion of one year of Bachelor's degree-level study at a recognised institution*

CANADA High School Diploma with an average of 65 percent or higher across five subjects in Grade 12. Requirements vary from province to province. For province-specific requirements, contact the International Admissions team at international@vuw.ac.nz

CHINA PRC Successful completion of Senior High School Graduation with an average of 75 percent or higher overall, plus one year of Bachelor's degree-level study at a recognised institution; or successful completion of Senior High School Graduation with an average of 75 percent or higher overall, plus successful completion of a three-year diploma from a recognised institution; or achieved a Tier 1 score in the National University Entrance Examination (Gaokao) at a recognised institution*

DENMARK Successful completion of Højere Handelseksamen; or successful completion of Højere Forberedelseeksamen. A grade of 7 or higher in English fulfils the English-language requirement

FIJI See South Pacific Nations

FINLAND Successful completion of Ylioppilastutkinto / Studentexamen. A grade of 8 or higher in English fulfils the English-language requirement

FRANCE Successful completion of Diplôme du Baccalauréat

GERMANY Successful completion of Zeugnis der Allgemeinen Hochschulreife (Abitur). Abitur English grade 3 (1–6 grading scale) or 10 (11–15 grading scale), or higher fulfils the English language requirement

HONG KONG Successful completion of the Hong Kong Diploma of Secondary Education (HKDSE) with at least three subjects achieved at Level 4 or higher, including English language and two elective subjects; or three Hong Kong Advanced Level passes at grade C or higher

INDIA All-India Senior School Certificate (AISSC) minimum 75 percent overall; or India School Certificate (ISC) minimum 75 percent overall. A grade of 65 percent or higher in English fulfils the English-language requirement

INDONESIA Sekolah Menengah Atas / Madrasah Aliyah (SMA/MA) with a final grade of 86 or higher; or successful completion of one year of Bachelor's degree-level study at a recognised institution*

JAPAN High School Diploma with an average of 3.5 or higher

KOREA Korean University Entrance Examination minimum score of 250; or High School Diploma, plus one year of Bachelor's degree-level study at a recognised institution*

MALAYSIA STPM with three passes at C grade or higher; or maximum score of 20 points over the best five academic subjects in the UEC; or successful completion of the Ontario Secondary School Diploma (Canadian Pre-U) with an average of at least 65 percent across six subjects in Grade 12; or Malaysian Matriculation Certificate (Matrikulasi) with a cumulative minimum GPA of 2.5. A grade of A- or higher in SPM English; or B4 or higher in GCE O-level English 1119; or B or higher in STPM English or B4 or higher in UEC English fulfils the English-language requirement

NETHERLANDS Completion of Voorbereidend Wetenschappelijk Onderwijs (VWO)

NORWAY Vitnemål for Videregående. A grade of 4/VG or higher in English fulfils the English-language requirement

OMAN One year of Bachelor's degree-level study at a recognised institution; or successful completion of a two- or three-year diploma from a recognised institution*

PHILIPPINES Successful completion of one year of Bachelor's degree-level study at a recognised institution*

RUSSIA Certificate of Secondary (Complete) General Education and successful completion of one year of Bachelor's degree-level study at a recognised institution*

SĀMOA See South Pacific Nations

SAUDI ARABIA One year of Bachelor's degree-level study at a recognised institution; or successful completion of a two- or three-year diploma from a recognised institution*

SINGAPORE Three H2 Level passes at grade C or higher; or 18 points where A=10, B=8, C=6, and so on

SOUTH AFRICA National Senior Certificate with an aggregate score of C or 3. A grade of D or 4 or higher in English fulfils the English-language requirement

SOUTH PACIFIC NATIONS South Pacific Senior Secondary Certificate with three B/Merit grades plus a minimum grade of 5 in PSSC English and 6 in PSSC Maths; or University of the South Pacific Foundation year with a minimum of C in Communication; or National University of Samoa Foundation Certificate with an average grade B3; or a score of 250 or higher in the Fiji 7th Form Certificate with passes in 4 subjects; or Tonga National Form 7 Certificate with three B grades plus a minimum grade of 5 in PSSC English and 6 in PSSC Maths

SRI LANKA Three GCE Advanced Level passes, one subject must be at grade C or higher

SWEDEN Avgångsbetyg, Slutbetyg från Gymnasieskola or Högskoleförberedande examen. A grade of 4/VG or 15/C in English (A or B) in the Avgångsbetyg/Slutbetyg; or a grade of C or higher in English (5 or 6) in the Högskoleförberedande examen fulfils the English-language requirement

TAIWAN Senior High School Diploma with an average grade of B+, plus one year of Bachelor's degree-level study at a recognised institution*

THAILAND Matayom 6 with a GPA of 3.2 or higher; or successful completion of one year of Bachelor's degree-level study at a recognised institution* with a GPA of 2.5 or higher

TONGA See South Pacific Nations

UNITED KINGDOM Three GCE Advanced Level passes at grade C or higher. See A Levels for requirements for outside the UK

UAE One year of Bachelor's degree-level study at a recognised institution; or successful completion of a two- or three-year diploma from a recognised institution*

USA High School Diploma or GED, and a SAT score of 1,160 or higher overall; or High School Diploma or GED, and an ACT composite score of 24 or higher; or successful completion of an Associate Degree (AA or AS) from a recognised institution*

VIET NAM Grade 12 with a GPA of 8.0 or higher (when High School Graduation Certificate attained in 2016 and onwards)

*To find out if yours is a recognised institution, contact the International Admissions team at international@vuw.ac.nz

For the latest minimum entry requirements by country, go to our website.

www.wgtn.ac.nz/country-minimum-requirements

ENGLISH-LANGUAGE REQUIREMENTS

	IELTS Academic	TOEFL iBT	Pearson Test of English (PTE)	Cambridge English Qualifications (C1 Advanced/ C2 Proficiency)	New Zealand Certificates in English Language (NZCEL)	Victoria University of Wellington English for Academic Purposes (EAP) programme
Undergraduate students	Overall band of 6.0 with no sub-score below 5.5	A score of 80 on the internet-based test	A score of 50 with a 'Communicative' score of not less than 42	A score of 169 or higher, with each skill score no less than 162	NZCEL Level 4 (Academic)	A minimum of three ratings of 4 and one rating of 3
Postgraduate students	Overall band of 6.5 with no sub-score below 6.0	A score of 90 on the internet-based test, with at least 20 in writing	A score of 58 with a 'Communicative' score of not less than 50	A score of 176 or higher, with each skill score no less than 169	NZCEL Level 5 (Academic)	A minimum of two ratings of 5 and two ratings of 4

We currently also accept the Duolingo English Test to meet the general English requirement for most undergraduate programmes. You will need to achieve 110 overall and good scores in each sub-score. To enquire about Duolingo, contact international@vuw.ac.nz

These are the minimum English-language requirements for admission to the University. Some programmes may have higher English-language requirements. See the programme tables from page 18 or find your chosen programme on our website for more country-specific information.

www.wgtn.ac.nz/international/programmes

You may be exempt from these English-language requirements if your previous studies were undertaken in a native English-speaking country or English-language curriculum. This will be assessed by our admissions team when you apply.

For the latest English-language requirements, go to www.wgtn.ac.nz/international-entry-requirements

FEES AND COSTS

Estimated programme fees are listed on pages 18–27 and on our website. These are reviewed annually. Your final tuition fees will be calculated when you enrol.

Student Services Levy

All students are required to pay a Student Services Levy. This is a contribution towards student support services at the University. The 2023 Student Services Levy is NZ\$8.60 per point for students studying on campus and NZ\$4.30 per point for students studying overseas.

Other costs

Some programmes may incur additional costs. Costs associated with field trips and thesis publication are not included in the fee estimates on the previous pages. Costs for course materials are also not included.

PhD study

Tuition fees for PhD study and research are charged on a per-year basis. Tuition fees are set late in the preceding year. International PhD students are charged at domestic fee rates.

Cost calculator

Use our cost calculator to work out your likely study and living costs in Wellington.

www.wgtn.ac.nz/cost-calculator

PROGRAMME DURATIONS

Estimated durations for each programme are noted on pages 18–27. Some programmes may take longer to complete due to availability of courses, workload, or a student's capabilities. The start date of some programmes may vary depending on major subject or specialisation. The duration of some programmes may be affected by your chosen start date.

The University's study year is made up of three trimesters.

- ▶ Trimester 1: Late February to June
- ▶ Trimester 2: Early July to November
- ▶ Trimester 3: Early November to February

Study in Trimester 3 is available only for specific programmes.

INSURANCE

All students are required to have approved medical and travel insurance. For full details, go to our website.

www.wgtn.ac.nz/international-insurance

CONTACT US

For more information, send us an email.

international@vuw.ac.nz

HOW TO APPLY

Applying to study at Victoria University of Wellington is easy and free of charge.



APPLICATION DEADLINES

You should apply as soon as possible to ensure you have enough time to arrange your student visa and accommodation before you travel to New Zealand.

- ▶ Trimester 1 (February): Apply by 1 December the previous year
- ▶ Trimester 2 (July): Apply by 1 May
- ▶ Trimester 3 (November): Apply by 1 September

Some programmes have an earlier application closing date.

For the latest information about the University's application deadlines, go to our website.

www.wgtn.ac.nz/international-deadlines

STEP 1

CHOOSE YOUR PROGRAMME OF STUDY

Explore our subjects on our website.

STEP 2

CHECK YOU MEET THE ENTRY REQUIREMENTS

Check the academic and English-language entry requirements on pages 31–32.

If you don't meet the entry requirements for:

- ▶ English language, you can take English for Academic Purposes (EAP)
- ▶ undergraduate study, you can enrol in our Foundation Studies programme
- ▶ postgraduate study, contact us at international@vuw.ac.nz and we can help you check if there are pathways available for your chosen degree.

STEP 3

CHECK YOUR FEES AND COSTS

For estimated tuition fees, see pages 18–27. For information about living costs and scholarships that are open to international students, go to our website.

STEP 4

SUBMIT YOUR APPLICATION

Submit your application to Wellington University International with documentation before the application deadlines.

www.wgtn.ac.nz/international/applying/how-to-apply

STEP 5

WAIT TO HEAR FROM US

We'll send you a confirmation email when we receive your complete application. We'll let you know by email if your application is successful, usually within one week (undergraduate) or four weeks (postgraduate).

STEP 6

IF ACCEPTED, GET READY TO ENROL

If you are accepted to Victoria University of Wellington, we'll email you an Offer of Place and tell you how to enrol and when to pay your fees.

For more information, go to the website.

www.wgtn.ac.nz/international/applying



If you are a prospective PhD candidate, go to the Wellington Faculty of Graduate Research website for information on how to apply.

www.wgtn.ac.nz/fgr

To find out what you need to organise before you study, including your student visa, accommodation, and insurance, go to our website.

www.wgtn.ac.nz/international/get-ready-to-study





VICTORIA UNIVERSITY OF
WELLINGTON
TE HERENGA WAKA
NEW ZEALAND

THE PASTORAL CARE CODE

The Government's Pastoral Care Code sets out the University's role and responsibilities in ensuring the wellbeing and safety of all our students. This includes fostering learning environments that are safe and designed to support positive learning experiences of diverse student groups. During your time here, you have access to a range of services and support to promote your overall wellbeing, development, and educational achievement.

Read more about the code and our obligations.

www.wgtn.ac.nz/support

IMPORTANT NOTICE: Te Herenga Waka—Victoria University of Wellington uses all reasonable skill and care to ensure the information contained in this document is accurate at the time of being made available. However, matters covered by this document are subject to change due to a continuous process of review and to unanticipated circumstances, including those caused by COVID-19. The University therefore reserves the right to make any changes without notice. So far as the law permits, the University accepts no responsibility for any loss suffered by any person due to reliance (either whole or in part) on the information contained in this document, whether direct or indirect, and whether foreseeable or not.



CONTACT US

Wellington University International

📞 +64 4 463 5350

☎ +64 4 463 5056

✉ international@vuw.ac.nz

🌐 www.wgtn.ac.nz/international



Mailing address

Wellington University International
Victoria University of Wellington
PO Box 600
Wellington 6140
New Zealand

Physical address

Wellington University International
Victoria University of Wellington
Rutherford House
Pipitea Campus, 23 Lambton Quay
Wellington 6011
New Zealand

FOLLOW US ON SOCIAL MEDIA

📷 www.wgtn.ac.nz/instagram

🌐 www.wgtn.ac.nz/linkedin

🎵 www.tiktok.com/@wellingtonuni

WATCH OUR VIDEOS

📺 www.wgtn.ac.nz/youtube

