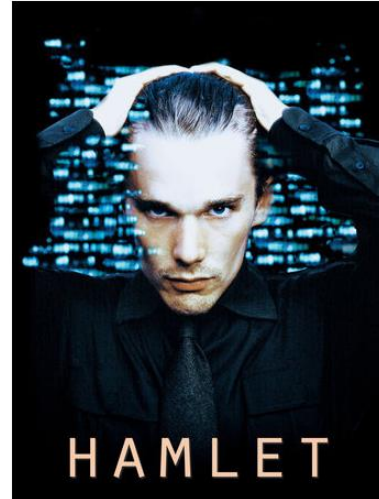
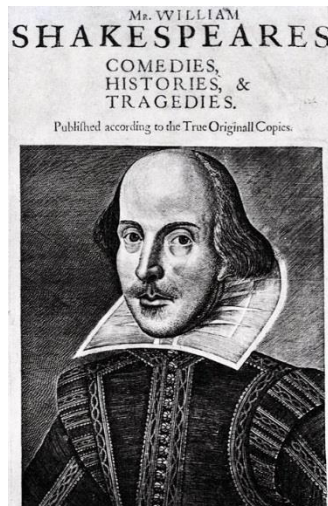


ENGL 208 Shakespeare

Trimester 2 2016

11 July to 13 November 2016

20 Points



IMPORTANT DATES

Teaching dates:	11 July to 16 October 2016
Mid-trimester break:	22 August to 4 September 2016
Study period:	17 – 20 October 2016
Examination/Assessment period:	21 October to 12 November 2016

Note: Students who enrol in courses with examinations must be able to attend an examination at the University at any time during the scheduled examination period.

Withdrawal dates: Refer to www.victoria.ac.nz/students/study/withdrawals-refunds.

If you cannot complete an assignment or sit a test in the last three weeks of teaching, or an examination, it may instead be possible to apply for an aegrotat (refer to www.victoria.ac.nz/students/study/exams/aegrotats).

CLASS TIMES AND LOCATIONS

Lectures

Tue, Fri	3.10 - 4.00 pm	New Kirk KKLT301
----------	----------------	------------------

School of English, Film, Theatre, & Media Studies
ENGLISH LITERATURE PROGRAMME COURSE OUTLINE ENGL 208

Wed 3.10 – 4.00 pm Hunter HULT119

Tutorials

Tutorials begin in WEEK 2. Please register for tutorials via the ENGL 208 site on Blackboard: go to “Tutorial instructions” and then follow the instructions carefully. Remember to record your tutorial time, day and room for future reference. Tutorial rooms will be listed on myAllocator, Blackboard and on the noticeboard in the Level 3 corridor of the Hugh Mackenzie Building.

NAMES AND CONTACT DETAILS

Staff	Email	Phone	Room	Office Hours
Sarah Ross	Sarah.Ross@vuw.ac.nz	463 6806	VZ812	tba
Dougal McNeill	Dougal.McNeill@vuw.ac.nz	463 6803	VZ905	tba
Lori Leigh	Lori.Leigh@vuw.ac.nz	463 6712	304 FT77	tba

COMMUNICATION OF ADDITIONAL INFORMATION

Tutorial lists, essay topics, and other information (including the time and place of the final examination when this is announced after mid-trimester break) will be posted on the course Blackboard site (<http://blackboard.vuw.ac.nz/>). Brief lecture summaries and/or PowerPoint slides will also be posted on Blackboard (note that these are not a substitute for attendance at lectures!).

If you are not going to use the Victoria email address set up for you, we strongly encourage you to set a forward from the Victoria email system to the email address you do use.

PRESCRIPTION

A study of four or five plays (normally including a history, a comedy, a tragedy and a romance), approached both as literary texts and as scripts for stage performance and film adaptation. We will also draw on scenes from other plays by Shakespeare and his contemporaries.

COURSE LEARNING OBJECTIVES (CLOS)

Students who pass this course should be able to:

1. demonstrate detailed knowledge of all four Shakespeare plays on the course, their characters, plots, and preoccupations;
2. understand some of the major differences between the language of Shakespeare and contemporary English;
3. show familiarity with the stage conventions of the Renaissance and comment on theatrical issues in the plays;
4. analyse passages from the plays in detail, with close attention to both language and stage context;

5. compare and contrast plays in relation to their treatment of recurring Shakespearean themes and concerns;
6. discuss the development of Shakespeare's language, dramaturgy, and ideas in the course of his dramatic career.
7. present and discuss their understanding of the texts in both oral and written form.

TEACHING FORMAT

The course is taught in three lectures and one tutorial per week. Tutorials will begin in the second week of the trimester. Students will be expected to complete a worksheet in preparation for each tutorial (starting with the second); these will be available on Blackboard.

MANDATORY COURSE REQUIREMENTS

In addition to achieving an overall pass mark of 50%, students must:

- submit a genuine attempt at each piece of written work specified for this course, on or by the specified dates (subject to any extensions granted), in order to demonstrate the achievement of all CLO's in the course;
- attend at least seven tutorials, in order to demonstrate the achievement of CLO 7;
- sit at least four of the five in-class tests, in order to demonstrate the achievement of CLO 1;
- sit the final examination on the required date.

Any student who is concerned that they have been (or might be) unable to meet any of these mandatory course requirements because of exceptional personal circumstances, should contact the course coordinator as soon as possible.

WORKLOAD

The expected workload for a 20-point course is 200 hours over the trimester or 13 hours per teaching week.

ASSESSMENT

Assessment for the course is based on a mixture of in-term work (60%) and final examination (40%). The examination will count for 100%, **if** that grade is higher than the combined in-term and exam grade, and **if** an overall passing grade has been achieved for the in-term work.

Assessment items and workload per item		%	CLO(s)	Due date
1	Essay, 1200-1500 words, OR performance research project	20%	3, 4	19 August or PBR tba

ENGLISH LITERATURE PROGRAMME COURSE OUTLINE ENGL 208

2	Essay, 1200-1500 words, OR performance research project	20%	3, 5, 6	7 Oct or PBR tba
3	5 x short in-class tests, 5% each, best 4 count	20%	1	2 Aug; 16 Aug; 13 Sep; 28 Sep; 12 Oct
4	3-hour examination	40%	all	Tba

Performance Research Project: may be chosen in place of **either** the first **or** the second essay (but not both). Students choosing this option will pick a soliloquy (for solo performance) or short scene (for a group of 2-3 students; 3-5 mins max) from one of the plays on the course; they will present the scene in tutorial, and also submit a portfolio (1000 words), explaining and justifying their performance and staging choices. Students presenting a group performance will be marked individually. Students choosing this option **must register their choice of play with their tutor by week 3 (Friday 29 July).**

All in-term work must be presented in accordance with the guidelines for writing and referencing in the *SEFTMS Student Handbook*, which will be available on Blackboard.

Examination: will take place during the end-of-year exam period (21 Oct–12 Nov); format will be announced later.

SUBMISSION AND RETURN OF WORK

Work provided for assessment in this course will be checked for academic integrity by Turnitin. Follow the instructions provided in the “Assignments and Turnitin” section of Blackboard.

Assignments must be submitted in both hard copy and electronic form.

Hardcopy assignments are submitted in the drop slot outside the administration office, von Zedlitz level 8. Attach an assignment cover sheet or extension form, found on Blackboard or outside the administration office. Remember to fill in your tutor’s name.

Electronic assignments are submitted as a MS Word file through Blackboard. How to name your file and step-by-step instructions can be found on Blackboard in the “Assignments and Turnitin” section.

Your marked assignment will be handed back by your tutor in tutorials or during their office hours. Any uncollected assignments can be picked up from the Programme Administrator after the last day of teaching. Assignments will be held in the Administration office until the end of the following trimester. You need to show your student identification to collect marked assignment from the Administration office.

EXTENSIONS AND PENALTIES

Extensions

In exceptional and unforeseen circumstances an extension may be granted. To apply for an extension, email your Course Coordinator before the assignment is due. If granted, your Course Coordinator will inform you of the new due date. Tutors cannot grant extensions. **No assignment with or without an extension will be accepted after Friday 11 November 2016.**

Penalties

Work submitted after the deadline will be penalised by a 2.5 percent deduction from your total mark per work day. Late work also receives only minimal comments from your marker.

SET TEXTS

ENGL 208 Student Notes.

AND EITHER

Shakespeare. *Titus Andronicus*. Ed. Bate. New Arden (3rd series).

Shakespeare. *A Midsummer Night's Dream*. Ed. Holland. Oxford University Press.

Shakespeare. *Henry V*. Ed. Bate and Rasmussen. RSC / Palgrave.

Shakespeare. *Hamlet*. E. Edwards. Cambridge University Press.

Shakespeare. *The Two Noble Kinsmen*. Eds. Turner and Tatzpaugh. Cambridge University Press.

OR

Norton Shakespeare. Ed. Greenblatt. Norton.

You can order textbooks and student notes online at www.vicbooks.co.nz or can email an order or enquiry to enquiries@vicbooks.co.nz.

CLASS REPRESENTATIVE

The class representative provides a useful way to communicate feedback to the teaching staff during the course. A class representative will be selected at the first lecture of the course. Students may like to write the Class Rep's name and details in this box:

Class Rep name and contact details:

STUDENT FEEDBACK

The most recent student evaluations, in 2014, were very positive, with praise for the variety of approaches to the plays, the quality of the lecturing, and the use of film and stage performance. We have taken note of comments about avoiding unnecessary repetition between lecturers, and about timely release of assignment topics and worksheets. One request which we have not followed was for more detailed lecture

summaries to be posted on Blackboard: the Blackboard slides are *not* intended to be a substitute for attendance at lectures.

Student feedback on University courses may be found at

www.cad.vuw.ac.nz/feedback/feedback_display.php.

In week six or seven of the trimester your class representative will be invited to a meeting with the Programme staff. In week five your class representative will ask the class for any feedback on this course to discuss at this meeting.

OTHER IMPORTANT INFORMATION

The information above is specific to this course. There is other important information that students must familiarise themselves with, including:

- *Academic Integrity and Plagiarism: www.victoria.ac.nz/students/study/exams/integrity-plagiarism*
- *Academic Progress: www.victoria.ac.nz/students/study/progress/academic-progess (including restrictions and non-engagement)*
- *Dates and deadlines: www.victoria.ac.nz/students/study/dates*
- *FHSS Student and Academic Services Office: www.victoria.ac.nz/fhss/student-admin*
- *Grades: www.victoria.ac.nz/students/study/progress/grades*
- *Special passes: refer to the Assessment Handbook, at www.victoria.ac.nz/documents/policy/staff-policy/assessment-handbook.pdf*
- *Statutes and policies including the Student Conduct Statute: www.victoria.ac.nz/about/governance/strategy*
- *Student support: www.victoria.ac.nz/students/support*
- *Students with disabilities: www.victoria.ac.nz/st_services/disability*
- *Student Charter: www.victoria.ac.nz/learning-teaching/learning-partnerships/student-charter*
- *Subject Librarians: <http://library.victoria.ac.nz/library-v2/find-your-subject-librarian>*
- *Terms and conditions: www.victoria.ac.nz/study/apply-enrol/terms-conditions/student-contract*
- *Turnitin: www.cad.vuw.ac.nz/wiki/index.php/Turnitin*
- *University structure: www.victoria.ac.nz/about/governance/structure*
- *Victoria graduate profile: www.victoria.ac.nz/learning-teaching/learning-partnerships/graduate-profile*
- *VUWSA: www.vuwsa.org.nz*

School of English, Film, Theatre, & Media Studies
ENGLISH LITERATURE PROGRAMME COURSE OUTLINE ENGL 208

COURSE PROGRAMME

[LL Lori Leigh DM Dougal McNeill SR Sarah Ross]

Week 1	12 Jul	Introduction	SR
	13 Jul	Shakespeare on the stage: Renaissance theatre	LL
	15 Jul	Shakespeare on the page: authorship and publication	DM
Week 2	19 Jul	<i>Titus Andronicus</i>	SR
	20 Jul	<i>Titus Andronicus</i>	SR
	22 Jul	<i>Titus Andronicus</i>	DM
Week 3	26 Jul	<i>Titus</i> on stage	LL
	27 Jul	<i>Titus</i> on stage	LL
	29 Jul	Shakespeare / <i>Titus</i> on film	SR
Week 4	2 Aug	<i>Titus</i> on film; Titus short test	SR
	3 Aug	<i>A Midsummer Night's Dream</i>	SR
	5 Aug	<i>A Midsummer Night's Dream</i>	SR
Week 5	9 Aug	<i>A Midsummer Night's Dream</i> on stage	LL
	10 Aug	<i>A Midsummer Night's Dream</i> on stage	LL
	12 Aug	<i>A Midsummer Night's Dream</i>	SR
Week 6	16 Aug	<i>A Midsummer Night's Dream</i> on film; MND short test	SR
	17 Aug	Henry V	DM
	19 Aug	Henry V; FIRST ESSAY DUE	DM
Mid Trimester Break: Monday 22 August to Sunday 4 September 2016			
Week 7	6 Sep	<i>Henry V</i> on stage	LL
	7 Sep	<i>Henry V</i>	DM
	9 Sep	<i>Henry V</i>	DM
Week 8	13 Sep	<i>Henry V</i> on film; Henry V short test	DM

School of English, Film, Theatre, & Media Studies
ENGLISH LITERATURE PROGRAMME COURSE OUTLINE ENGL 208

	14 Sep	<i>Hamlet</i>	SR
	16 Sep	<i>Hamlet</i>	SR
Week 9	20 Sep	<i>Hamlet</i> on stage	LL
	21 Sep	<i>Hamlet</i>	SR
	23 Sep	<i>Hamlet</i> on stage	LL
Week 10	27 Sep	<i>Hamlet</i>	SR
	28 Sep	<i>Hamlet</i> on film; Hamlet short test	SR
	30 Sep	<i>The Two Noble Kinsmen</i> and the Renaissance indoor stage	LL
Week 11	4 Oct	<i>The Two Noble Kinsmen</i>	SR
	5 Oct	<i>The Two Noble Kinsmen</i> on stage	LL
	7 Oct	<i>The Two Noble Kinsmen</i> on stage; SECOND ESSAY DUE	[LL]
Week 12	11 Oct	<i>The Two Noble Kinsmen</i>	SR
	12 Oct	<i>The Two Noble Kinsmen</i> ; TNK short test	SR
	14 Oct	Conclusion	DM, SR

Study Period: Monday 17 to Thursday 20 October 2016

Examination Period: Friday 21 October to Saturday 12 November 2016