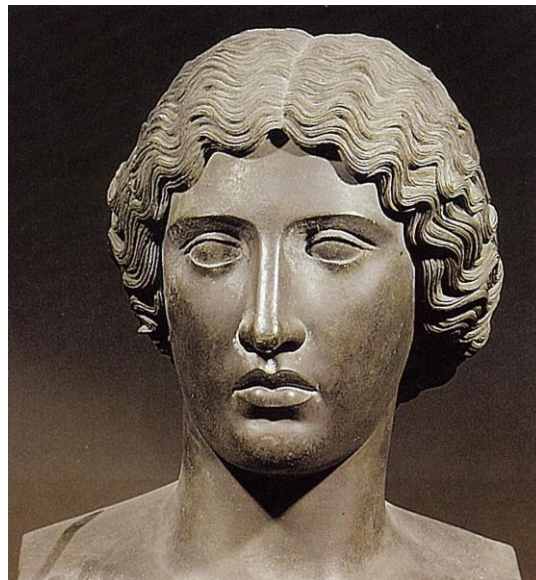
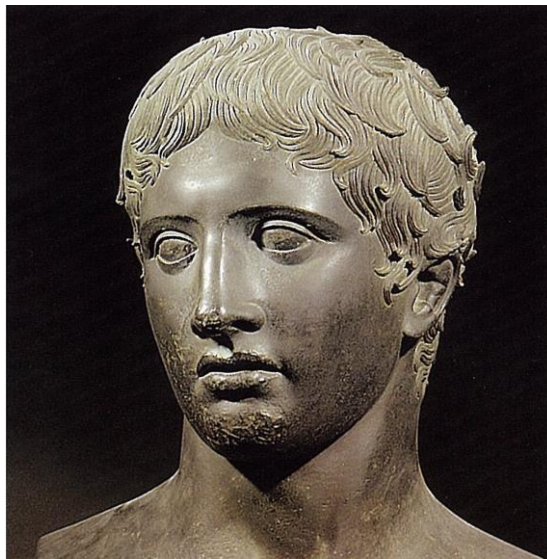


LATI 104

Elementary Latin

TRIMESTER 2 2015



SCHOOL OF ART HISTORY, **CLASSICS** & RELIGIOUS STUDIES
VICTORIA UNIVERSITY OF WELLINGTON



FACULTY OF HUMANITIES AND SOCIAL SCIENCES

School of Art History, Classics, and Religious Studies

CLASSICS PROGRAMME
LATI 104 Elementary Latin
20 POINTS

TRIMESTER 2 2015

Important dates

Trimester dates: 13 July to 15 November 2015

Teaching dates: 13 July to 16 October 2015

Mid-trimester break: 24 August to 6 September 2015

Study period: 19–23 October 2015

Examination/Assessment Period: 23 October to 14 November 2015

Note: students who enrol in courses with examinations must be able to attend an examination at the University at any time during the scheduled examination period.

Withdrawal dates: Refer to www.victoria.ac.nz/students/study/withdrawals-refunds. If you cannot complete an assignment or sit a test or examination, refer to www.victoria.ac.nz/students/study/exams/aegrotats.

Class times and locations

Monday, Tuesday, Thursday, Friday 3:10 – 4pm: Murphy Building, Room 301

Names and contact details

Course coordinator: Dr Judy Deuling

Office: OK 517

Phone: 463 6783

Email: judy.deuling@vuw.ac.nz

Office hours: TBA

Communication of additional information

Any additional information will be posted on the Classics Programme notice board on the fifth floor of Old Kirk (OK). Final examination timetables will be available to students when posted by the Faculty of Humanities and Social Sciences and Victoria University. It is the student's responsibility to obtain such information and to respond appropriately.

LATI 104: ELEMENTARY LATIN
Trimester Two.2015

Prescription

A study of Latin, assuming basic reading skills, with emphasis on the reading of selected texts.

Course learning objectives (CLOs)

Learning Latin and gaining fluency is a cumulative process. Each step builds on the previous one and is increased through preparation and practice. Students who pass this course will be able to:

1. demonstrate knowledge of Latin vocabulary, morphology and syntax;
2. read and translate Latin passages into English;
3. identify and discuss linguistic concepts for Latin; and
4. appreciate the general historical context of Rome in the 1st century BCE to CE just before and during the principate of Augustus.

Teaching format

This course is taught via a seminar format in which the lecturer assists in translation and explaining Latin grammar, vocabulary and content; students participate fully in all activities such as explanation and learning, as well as reading and translating passages and doing exercises.

Mandatory course requirements

In addition to achieving an overall pass mark of 50%, students must:

- sit all four tests and the final examination
- submit the take-home assignment

Workload

Students should expect to spend a total of two hundred hours for this course.

Assessment

Assessment items and workload per item	%	CLO(s)	Due date
1 Four 20-25 minute tests (worth 12% each) will assess students on their grasp of recently-studied material, focussing on vocabulary, morphology and some syntax. Questions will mostly be short-answer; some translation from English into Latin may be required. To be completed in class. Each will count for 12% of the total marks in the course. All tests must be taken on the day set, unless there are medical or other demonstrable extenuating circumstances, preferably announced before the event.	48%	1, 2, 3	Fri. 24 July Fri. 7 August Fri. 11 Sept. Fri. 2 October
2 Take-home assignment will focus on translation from Latin to English and include questions on morphology, vocabulary and syntax. Students will have one week to complete the take-home assignment, and it is to be handed in at the beginning of class on the due date.	12%	1, 2, 3, 4	Fri. 21 August
3 2-hour final examination	40%	1, 2, 3, 4	TBA

Submission and return of work

All in-term tests must be taken on the day set, unless there are demonstrable extenuating circumstances. Assessment items will normally be returned in class within 2 weeks. Where this is impractical, assessment items will be made available in the Classics Administrator's office.

Extensions and penalties

Late work will not be accepted, unless there are demonstrable extenuating circumstances. You must ask the course coordinator for an extension or alternative test arrangement BEFORE the test/assignment.

Late submission of assignments will be penalised at 2% (out of 100%) per day.

Set Text

Kitchell, Jr., Kenneth F. and Thomas J. Sienkewicz. *Disce! An Introductory Latin Course*, First Edition (Prentice Hall, 2011) Volumes 1 & 2. Available from www.vicbooks.co.nz

Class representative

The class representative provides a useful way to communicate feedback to the teaching staff during the course. A class representative will be selected at the first lecture of the course. Students may like to write the Class Rep's name and details in this box:

Class Rep name and contact details:

Student feedback

Presently there is no student feedback on line for this course. However, changes are made continually to lectures. In addition, the lecture outlines and synopses are now available on Blackboard. Towards the end of term, students will have the opportunity to provide assessment of the course itself as well as lecturing.

Student feedback on University courses may be found at www.cad.vuw.ac.nz/feedback/feedback_display.php.

Other important information

The information above is specific to this course. There is other important information that students must familiarise themselves with, including:

- Academic Integrity and Plagiarism: www.victoria.ac.nz/students/study/exams/integrity-plagiarism
- Aegrotats: www.victoria.ac.nz/students/study/exams/aegrotats
- Academic Progress: www.victoria.ac.nz/students/study/progress/academic-progress (including restrictions and non-engagement)
- Dates and deadlines: www.victoria.ac.nz/students/study/dates
- FHSS Student and Academic Services Office: www.victoria.ac.nz/fhss/student-admin
- Grades: www.victoria.ac.nz/students/study/progress/grades
- Resolving academic issues: www.victoria.ac.nz/about/governance/dvc-academic/publications
- Special passes: www.victoria.ac.nz/about/governance/dvc-academic/publications
- Statutes and policies including the Student Conduct Statute: www.victoria.ac.nz/about/governance/strategy
- Student support: www.victoria.ac.nz/students/support

- Students with disabilities: www.victoria.ac.nz/st_services/disability
- Student Charter: www.victoria.ac.nz/learning-teaching/learning-partnerships/student-charter
- Student Contract: www.victoria.ac.nz/study/apply-enrol/terms-conditions/student-contract
- Subject Librarians: <http://library.victoria.ac.nz/library-v2/find-your-subject-librarian>
- Turnitin: www.cad.vuw.ac.nz/wiki/index.php/Turnitin
- University structure: www.victoria.ac.nz/about/governance/structure
- Victoria graduate profile: www.victoria.ac.nz/learning-teaching/learning-partnerships/graduate-profile
- VUWSA: www.vuwsa.org.nz