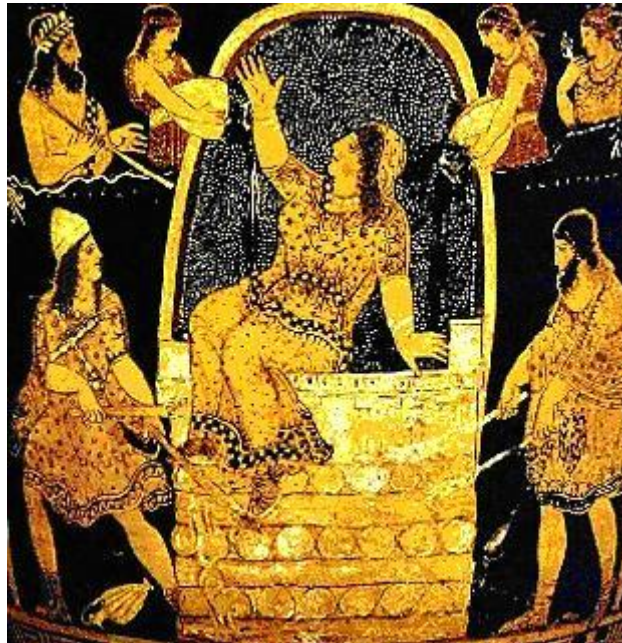


GREE 316

Advanced Greek Literature B

TRIMESTER 2 2015



SCHOOL OF ART HISTORY, CLASSICS & RELIGIOUS STUDIES

VICTORIA UNIVERSITY OF WELLINGTON



FACULTY OF HUMANITIES AND SOCIAL SCIENCES

SCHOOL OF ART HISTORY, CLASSICS AND RELIGIOUS STUDIES

CLASSICS PROGRAMME

GREE 316: ADVANCED GREEK LITERATURE B

20 POINTS

TRIMESTER 2 2015

Important dates

Trimester dates: 13 July to 15 November 2015

Teaching dates: 13 July to 16 October 2015

Mid-trimester break: 24 August to 6 September 2015

Study period: 19–23 October 2015

Examination/Assessment Period: 23 October to 14 November 2015

Note: students who enrol in courses with examinations must be able to attend an examination at the University at any time during the scheduled examination period.

Withdrawal dates: Refer to www.victoria.ac.nz/students/study/withdrawals-refunds. If you cannot complete an assignment or sit a test or examination, refer to www.victoria.ac.nz/students/study/exams/aegrotats.

Class times and locations

Days: Monday, Tuesday, Thursday

Time: 11.00 – 11:50 am

Room: VZ 105

Names and contact details

Course Coordinator & Lecturer: Dr Babette Puetz

Office: OK 513

Phone: 463 7407

Email: babette.puetz@vuw.ac.nz

Lecturer: Dr Judy K Deuling

Office: OK 517

Phone: 463 6783

judy.deuling@vuw.ac.nz

Communication of additional information

Changes and general information will be announced in class, via Classics notice boards in Old Kirk Level 5, opposite OK 505 and by email if necessary. Emergency changes and course information will be posted on the Classics notice boards, at the lecture room door when necessary, and by email if necessary. Final examination timetables will be available to students when posted by the Faculty of Humanities and Social Sciences and Victoria University. It is the student's responsibility to obtain such information and to respond appropriately.

Prescription

Literary and/or historical texts for translation, comment on subject matter, language and literary setting.

Course learning objectives (CLOs)

Students who pass this course should be able to:

1. read advanced Greek texts with considerable fluency.
2. comment critically on the use of language by the authors studied.
3. be aware of the general nature of genre-specific texts
4. be aware of major scholarly topics associated with these authors.
5. comment on matters discussed in the texts.

Teaching format

The class will be taught as a small seminar group, examining the Greek texts and discussing matters that arise. Students are expected to attend all classes. In addition, they will be expected to present a brief survey of a topic chosen from either of the authors.

Mandatory course requirements

There are no mandatory course requirements. It is highly unlikely, however, that any student will complete the course satisfactorily without attending and fully participating in at least 80% of all classes and attempting all work set, including during weeks 1-6 reading in Greek: Aristophanes, *Clouds* and during weeks 7-12 Herodotus, book 1.

Workload

In order to complete the course successfully an average student should expect to spend about 200 hours. This includes 3 hours of class time and 8 hours preparing texts and wider reading and assignment work each week of the trimester and 25 hours preparing for the examination.

Assessment

Assessment items and workload per item		%	CLO(s)	Due date
1	Class presentation on topic associated with one of the texts, 10-15 minutes. [5 hours]	10%	4, 5	Various (see below)
2	Essay on Aristophanes, <i>Clouds</i> , 1500-2000 words [18 hours]: EITHER Discuss the ambivalent role of the Cloud chorus. OR Find your own essay question. Please discuss this with me at least one week before the essay's due date.	20%	2,3,4,5	Monday, 10 August, 2015
3	Commentary on a coherent section of Herodotus, 1500-2000 words [18 hours]	20%	2,3,5	Monday, 5 October, 2015
4	Final Examination of 3 hours duration [25 hours]	50%	1,2,3,4,5	TBC

Marking Criteria

For class presentation: the ability to synthesise the topic and present this clearly to the class, using visual or written material as necessary.

For commentary: the ability to give an overview of the passage selected and discussion of salient points (literary, historical, and cultural) within this.

For essay: the ability to synthesise secondary work as well as analyse primary material and to present this in clear English to communicate the ideas of the essay.

For examination: the ability to translate accurately Greek into idiomatic English and to analyse the material for its salient points.

In all cases, the student should show understanding of the Greek texts they are considering.

Submission and return of work

Submission of work: commentary and essay should be deposited in the Assignments Box, outside OK 508, accompanied by the cover sheet provided (please mark any extensions granted!). It is recommended that students produce *typed* work. Essays should **NOT** be placed in lecturers' pigeonholes or under people's doors! Marking for the class presentation will generally be done on the day but certainly within a week after the presentation has been completed.

Extensions and penalties

Extensions

Extensions will be granted, where circumstances warrant them, only if permission is first sought, BEFORE THE DUE DATE, from the appropriate lecturer. Extensions are usually only granted for illness (on production of a medical certificate) or for family bereavement (where production of evidence may be required). Students should note the granting of an extension and its date on their written work to avoid the possibility of being penalised for late submission.

Penalties

Students who do not appear for their presentation may be penalised the full value of the assignment. Commentaries and essays submitted after the due date or the date of an approved extension may be penalised. A mark (out of 20) may be deducted for each day (including weekends) or part thereof that the assignment is overdue. Late work may also be awarded a grade only, without comments, and there is no guarantee that late assignments will be handed back before the final examination.

Under NO circumstances can any written work for GREE 316 be accepted after 16 October, 2015.

Work that exceeds the word limit may, at the marker's discretion, be marked only up to the word limit. While the word limit is a suggested maximum, it is likely that work that falls short of this limit by a substantial amount will be judged inadequate and receive a reduced mark. Plagiarised work will not be accepted.

Set texts

Aristophanes, *Clouds*, ed., intr., comm. K.J. Dover, Oxford 1968.

Herodotus Book 1, ed., comm. G.A. Sheets, Bryn Mawr Commentaries, 1984.

Both available from Vic Books (www.vicbooks.co.nz).

Recommended reading

Separate reading lists will be provided for each text. See particularly the texts listed below.

Class representative

The class representative provides a useful way to communicate feedback to the teaching staff during the course. A class representative will be selected at the first lecture of the course. Students may like to write the Class Rep's name and details in this box:

Class Rep name and contact details:

Student feedback

Presently there is no student feedback on line for this course. However, changes are made continually to lectures and tutorials. In addition, the lecture outlines and synopses are now available on Blackboard. Towards the end of term, students will have the opportunity to provide assessment of the course itself as well as lecturing and tutorials.

Student feedback on University courses may be found at www.cad.vuw.ac.nz/feedback/feedback_display.php.

Other important information

The information above is specific to this course. There is other important information that students must familiarise themselves with, including:

- Academic Integrity and Plagiarism: www.victoria.ac.nz/students/study/exams/integrity-plagiarism
- Aegrotats: www.victoria.ac.nz/students/study/exams/aegrotats
- Academic Progress: www.victoria.ac.nz/students/study/progress/academic-progress (including restrictions and non-engagement)
- Dates and deadlines: www.victoria.ac.nz/students/study/dates
- FHSS Student and Academic Services Office: www.victoria.ac.nz/fhss/student-admin
- Grades: www.victoria.ac.nz/students/study/progress/grades

- Resolving academic issues: www.victoria.ac.nz/about/governance/dvc-academic/publications
- Special passes: www.victoria.ac.nz/about/governance/dvc-academic/publications
- Statutes and policies including the Student Conduct Statute: www.victoria.ac.nz/about/governance/strategy
- Student support: www.victoria.ac.nz/students/support
- Students with disabilities: www.victoria.ac.nz/st_services/disability
- Student Charter: www.victoria.ac.nz/learning-teaching/learning-partnerships/student-charter
- Student Contract: www.victoria.ac.nz/study/apply-enrol/terms-conditions/student-contract
- Subject Librarians: <http://library.victoria.ac.nz/library-v2/find-your-subject-librarian>
- Turnitin: www.cad.vuw.ac.nz/wiki/index.php/Turnitin
- University structure: www.victoria.ac.nz/about/governance/structure
- Victoria graduate profile: www.victoria.ac.nz/learning-teaching/learning-partnerships/graduate-profile
- VUWSA: www.vuwsa.org.nz

IN-CLASS PRESENTATIONS

A ten-minute oral presentation to the class on one of these articles. Please write a handout, mentioning the main arguments of the article. You can email it to me the day before your presentation, so I can photocopy it for all, or bring copies for everyone to class.

Topics for the first half:

a. Bowie, A.M. (1993) *Aristophanes. Myth, Ritual and Comedy*, Cambridge, chapter 5 *Clouds*, 102-133. **(Thursday 23 July)**

b. Rosen, R.M. (1997) 'Performance and Textuality in Aristophanes' *Clouds*', *Yale Journal of Criticism* 10.1, 397-421. **(Thursday 30 July)**

Topics for the second half:

- a. Austin, M.M. (1990) 'Greek Tyrants and the Persians' 576-479 BC. *Classical Quarterly* 40, 289-306. **(Thursday 17 Sept.)**
- b. Dewald, C. (1981) 'Women and Culture in Herodotus's Histories, in H.P. Foley, ed. *Reflections of Women in Antiquity*, New York, 91-125. **(Thursday 24 Sept.)**