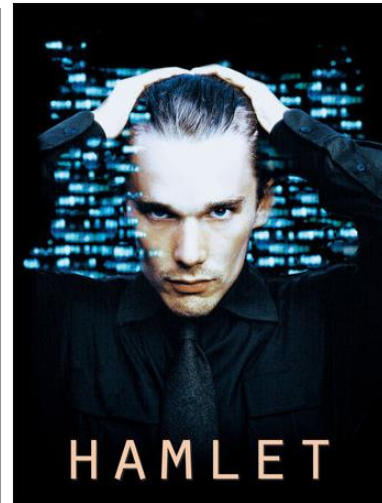
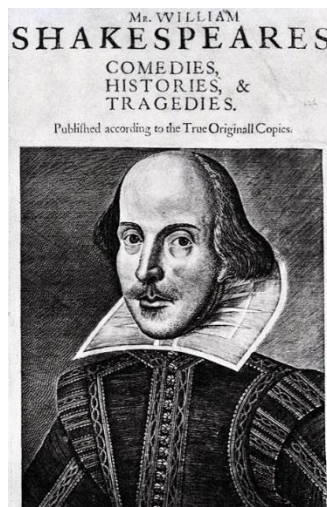


ENGL 208 Shakespeare

Trimester 2 2015

13 July to 15 November 2015

20 Points



IMPORTANT DATES

Teaching dates: 13 July to 16 October 2015

Mid-trimester break: 24 August to 6 September 2015

Study period: 19 to 23 October 2015

Examination/Assessment period: 23 October to 14 November 2015

Note: Students who enrol in courses with examinations must be able to attend an examination at the University at any time during the scheduled examination period.

Withdrawal dates: Refer to www.victoria.ac.nz/students/study/withdrawals-refunds. If you cannot complete an assignment or sit a test or examination, refer to www.victoria.ac.nz/students/study/exams/aegrotats.

CLASS TIMES AND LOCATIONS

Mon, Wed, Thu 2.10 – 3.00pm Maclaurin MCLT103

Tutorials

Tutorials begin in WEEK 2. Please register for tutorials via the ENGL 208 site on Blackboard: go to “Tutorial Instructions” and follow the instructions carefully. Remember to record your tutorial time, day and room for future reference.

NAMES AND CONTACT DETAILS

Staff	Email	Phone	Room	Office Hours
Geoff Miles	Geoff.Miles@vuw.ac.nz	463 6809	vZ 906	tba
Sarah Ross	Sarah.Ross@vuw.ac.nz	463 6806	vZ 812	tba
Lori Leigh	Lori.Leigh@vuw.ac.nz	463 6712	304 FT77	tba
Dougal McNeill	Dougal.McNeill@vuw.ac.nz	463 6803	VZ 904	tba

COMMUNICATION OF ADDITIONAL INFORMATION

Tutorial lists, essay topics, and other information (including the time and place of the final examination when this is announced after mid-trimester break) will be posted on the course Blackboard site (<http://blackboard.vuw.ac.nz/>). Brief lecture summaries and/or PowerPoint slides will also be posted on Blackboard (note that these are not a substitute for attendance at lectures!).

If you are not going to use the Victoria email address set up for you, we strongly encourage you to set a forward from the Victoria email system to the email address you do use.

PRESCRIPTION

A study of four plays (normally a history, a comedy, a tragedy and a romance), approached both as literary texts and as scripts for stage performance and film adaptation. We will also draw on scenes from other plays by Shakespeare and his contemporaries.

COURSE LEARNING OBJECTIVES (CLOS)

Students who pass this course should be able to:

1. demonstrate detailed knowledge of all four Shakespeare plays on the course, their characters, plots, and preoccupations;
2. understand some of the major differences between the language of Shakespeare and contemporary English;

3. show familiarity with the stage conventions of the Renaissance and comment on theatrical issues in the plays;
4. analyse passages from the plays in detail, with close attention to both language and stage context;
5. compare and contrast plays in relation to their treatment of recurring Shakespearean themes and concerns;
6. discuss the development of Shakespeare's language, dramaturgy, and ideas in the course of his dramatic career.
7. present and discuss their understanding of the texts in both oral and written form.

TEACHING FORMAT

The course is taught in three lectures and one tutorial per week. Tutorials will begin in the second week of the trimester. Students will be expected to complete a worksheet in preparation for each tutorial (starting with the second); these will be available on Blackboard.

MANDATORY COURSE REQUIREMENTS

In addition to achieving an overall pass mark of 50%, students must:

- submit the written work specified for this course, on or by the specified dates (subject to any extensions granted). achieve at least 40% in each piece of assessment (in order to demonstrate the achievement of all CLO's in the course)
- attend at least seven out of eleven tutorials (in order to demonstrate the achievement of CLO 7).
- sit both the class test and the final examination on the required dates.

Any student who is concerned that they have been (or might be) unable to meet any of these mandatory course requirements because of exceptional personal circumstances, should contact the course coordinator as soon as possible.

WORKLOAD

The expected workload for a 20-point course is 200 hours over the trimester or 13 hours per teaching week.

ASSESSMENT

Assessment for the course is based on a mixture of in-term work (50%) and final examination (50%); **or** 100% for the examination, if that grade is higher than the combined in-term and exam grade.

Assessment items and workload per item		%	CLO(s)	Due date
1	Class test, 50 minutes	10%	1, 2, 3	6 Aug

School of English, Film, Theatre, & Media Studies
ENGLISH PROGRAMME COURSE OUTLINE ENGL 208

2	Essay, 1200-1500 words, OR performance research project	20%	3, 4	7 Sept or tba
3	Essay, 1200-1500 words, OR performance research project	20%	3, 5, 6	6 Oct or tba
	3-hour examination	50%	all	tba

Class test: will test your factual knowledge of *Richard III*, your ability to paraphrase a brief passage from it, and your ability to discuss the staging of an excerpt from the play. The test will be held in the lecture hour and will be closed-book.

First Essay: a comparative critical analysis of two passages from *Richard III* and *A Midsummer Night's Dream*, discussing both literary and performance aspects. This will test your detailed understanding of the language and staging of the plays, and your ability to write a close analysis with detailed attention to the text.

Second Essay: either a comparative discussion of the treatment of a particular theme or motif in several of the plays on the course, or a discussion of the interpretations of a particular play in stage or screen production. This will test your broader understanding of the themes and concerns of the plays and of the nature of Shakespearean dramaturgy, and your ability to construct a well-argued, textually supported essay.

Performance Research Project: may be chosen in place of **either** the first **or** the second essay (but not both). Students choosing this option will pick a soliloquy (for solo performance) or short scene (for a group of 2-3 students; 3-5 mins max) from one of the plays on the course; they will present the scene in tutorial, and also submit a portfolio (1000 words), explaining and justifying their performance and staging choices. Students presenting a group performance will be marked individually. Students choosing this option must register their choice of play by week 3.

All in-term work must be presented in accordance with the guidelines for writing and referencing in the *SEFTMS Student Handbook*, which will be available on Blackboard.

Examination: will take place during the end-of-year exam period (23 Oct–14 Nov); format will be announced later.

SUBMISSION AND RETURN OF WORK

Work provided for assessment in this course will be checked for academic integrity by **Turnitin**.

Assignments must be submitted in both hardcopy and electronic form.

Hardcopy assignments are submitted in the drop slot outside the administration office, von Zedlitz level 8. Attach an assignment cover sheet or extension form, found on Blackboard or outside the administration office. Remember to fill in your tutor's name.

Electronic assignments are submitted as a MS Word file through Blackboard. How to name your file and step-by-step instructions can be found on Blackboard in the "Assignments and Turnitin" section.

Your marked assignment will be handed back by your tutor in tutorials or during their office hours. Any uncollected assignments can be picked up from the Programme Administrator after the last day of teaching. Assignments will be held in the Administration office until the end of the following trimester. You need to show your student identification to collect marked assignment from the Administration office.

EXTENSIONS AND PENALTIES

Extensions

In exceptional and unforeseen circumstances an extension may be granted. To apply for an extension, email your Course Coordinator before the assignment is due. If granted, your Course Coordinator will inform you of the new due date. Tutors cannot grant extensions. **No assignment with or without an extension will be accepted after Friday 13 November 2015.**

Penalties

Work submitted after the deadline will be penalised by a 2.5 percent deduction from your total mark per work day. Late work also receives only minimal comments from your marker.

SET TEXTS

ENGL 208 Shakespeare coursebook (Student Notes).

AND EITHER

Shakespeare. *King Richard III*. Ed. Janis Lull. Cambridge University Press.

Shakespeare. *A Midsummer Night's Dream*. Ed. Peter Holland. Oxford University Press.

Shakespeare. *Hamlet*. Ed. Philip Edwards. Cambridge University Press.

Shakespeare. *The Two Noble Kinsmen*. Eds. R. K. Turner and Patricia Tattspagh. Cambridge University Press.

OR

The Norton Shakespeare. Ed. Stephen Greenblatt. Norton. (A collected edition of all Shakespeare's plays.)

You can order textbooks and student notes online at www.vicbooks.co.nz or can email an order or enquiry to enquiries@vicbooks.co.nz.

CLASS REPRESENTATIVE

The class representative provides a useful way to communicate feedback to the teaching staff during the course. A class representative will be selected at the first lecture of the course. Students may like to write the Class Rep's name and details in this box:

Class Rep name and contact details:

STUDENT FEEDBACK

Student evaluations in 2014 were very positive, with praise for the variety of approaches to the plays, the quality of the lecturing, and the use of film and stage performance. We have taken note of comments about avoiding unnecessary repetition between lecturers, and about timely release of assignment topics and worksheets. One request which we have not followed was for more detailed lecture summaries to be posted on Blackboard: the Blackboard slides are *not* intended to be a substitute for attendance at lectures.

Student feedback on University courses may be found at

www.cad.vuw.ac.nz/feedback/feedback_display.php.

In week six or seven of the trimester your class representative will be invited to a meeting with the Programme staff. In week five your class representative will ask the class for any feedback on this course to discuss at this meeting.

OTHER IMPORTANT INFORMATION

The information above is specific to this course. There is other important information that students must familiarise themselves with, including:

- Academic Integrity and Plagiarism: www.victoria.ac.nz/students/study/exams/integrity-plagiarism
- Aegrotats: www.victoria.ac.nz/students/study/exams/aegrotats
- Academic Progress: www.victoria.ac.nz/students/study/progress/academic-progress (including restrictions and non-engagement)
- Dates and deadlines: www.victoria.ac.nz/students/study/dates
- FHSS Student and Academic Services Office: www.victoria.ac.nz/fhss/student-admin
- Grades: www.victoria.ac.nz/students/study/progress/grades
- Resolving academic issues: www.victoria.ac.nz/about/governance/dvc-academic/publications
- Special passes: www.victoria.ac.nz/about/governance/dvc-academic/publications
- Statutes and policies including the Student Conduct Statute:
www.victoria.ac.nz/about/governance/strategy
- Student support: www.victoria.ac.nz/students/support

School of English, Film, Theatre, & Media Studies
ENGLISH PROGRAMME COURSE OUTLINE ENGL 208

- Students with disabilities: www.victoria.ac.nz/st_services/disability
- Student Charter: www.victoria.ac.nz/learning-teaching/learning-partnerships/student-charter
- Student Contract: www.victoria.ac.nz/study/apply-enrol/terms-conditions/student-contract
- Subject Librarians: <http://library.victoria.ac.nz/library-v2/find-your-subject-librarian>
- Turnitin: www.cad.vuw.ac.nz/wiki/index.php/Turnitin
- University structure: www.victoria.ac.nz/about/governance/structure
- Victoria graduate profile: www.victoria.ac.nz/learning-teaching/learning-partnerships/graduate-profile
- VUWSA: www.vuwsa.org.nz
- School website: www.victoria.ac.nz/seftms

COURSE PROGRAMME

[GM Geoff Miles LL Lori Leigh DM Dougal McNeill SR Sarah Ross]

Week 1	13 July	Introduction	GM,LL
	15 July	Shakespeare on the page: authorship and publication	DM
	16 July	Shakespeare on the stage: Renaissance theatre	LL
Week 2	20 July	<i>Richard III</i>	GM
	22 July	<i>Richard III</i>	GM
	23 July	<i>Richard III</i> on stage	LL
Week 3	27 July	<i>Richard III</i>	GM
	29 July	<i>Richard III</i>	GM
	30 July	<i>Richard III</i> on stage	LL
Week 4	3 Aug	Introduction to Shakespeare on film	SR
	5 Aug	<i>Richard III</i> on film	SR
	6 Aug	CLASS TEST	—
Week 5	10 Aug	<i>A Midsummer Night's Dream</i>	SR
	12 Aug	<i>A Midsummer Night's Dream</i>	SR
	13 Aug	<i>A Midsummer Night's Dream</i> on stage	LL
Week 6	17 Aug	<i>A Midsummer Night's Dream</i> on film	GM
	19 Aug	<i>A Midsummer Night's Dream</i>	SR
	20 Aug	<i>A Midsummer Night's Dream</i> on stage	LL
Mid Trimester Break: Monday 24 August to Sunday 6 September 2015			
Week 7	7 Sep	<i>A Midsummer Night's Dream</i> on film; FIRST ESSAY DUE	SR
	9 Sep	<i>A Midsummer Night's Dream</i> and <i>Hamlet</i>	SR/GM
	10 Sep	<i>Hamlet</i>	GM
Week 8	15 Sep	<i>Hamlet</i>	SR
	17 Sep	<i>Hamlet</i> on film	GM
	18 Sep	<i>Hamlet</i> on stage	LL
Week 9	22 Sep	<i>Hamlet</i>	SR
	24 Sep	<i>Hamlet</i>	SR
	25 Sep	<i>Hamlet</i> on stage	LL

School of English, Film, Theatre, & Media Studies
ENGLISH PROGRAMME COURSE OUTLINE ENGL 208

Week 10	29 Sep	<i>Hamlet</i> on film	SR
	1 Oct	<i>Hamlet</i>	GM
	2 Oct	<i>The Two Noble Kinsmen</i> and the Renaissance indoor stage	LL
Week 11	6 Oct	<i>The Two Noble Kinsmen</i> ; SECOND ESSAY DUE	GM
	8 Oct	<i>The Two Noble Kinsmen</i>	GM
	9 Oct	<i>The Two Noble Kinsmen</i> on stage	LL
Week 12	13 Oct	<i>The Two Noble Kinsmen</i> on stage	LL
	15 Oct	<i>The Two Noble Kinsmen</i>	GM
	16 Oct	Conclusion	all

Study Period: Monday 19 October to Friday 23 October 2015

Examination Period: Friday 23 October to Saturday 14 November 2015

Images on first page:

(1) The title page of the 1623 First Folio of Shakespeare. arts.mit.edu.

(2) The 'De Witt drawing' of the Globe Theatre. <http://www.lostplays.org/index.php/Category:Swan>

(3) Poster for Michael Almerdyda's film of *Hamlet* (2000), starring Ethan Hawke. <http://www.sam-shepard.com/hamletpt1x.jpg>