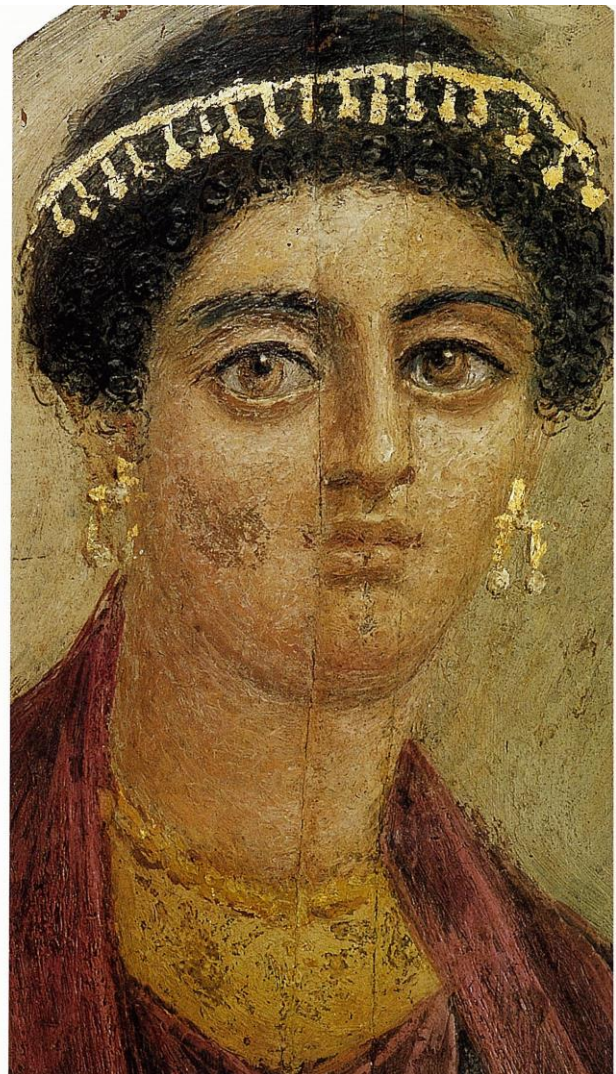
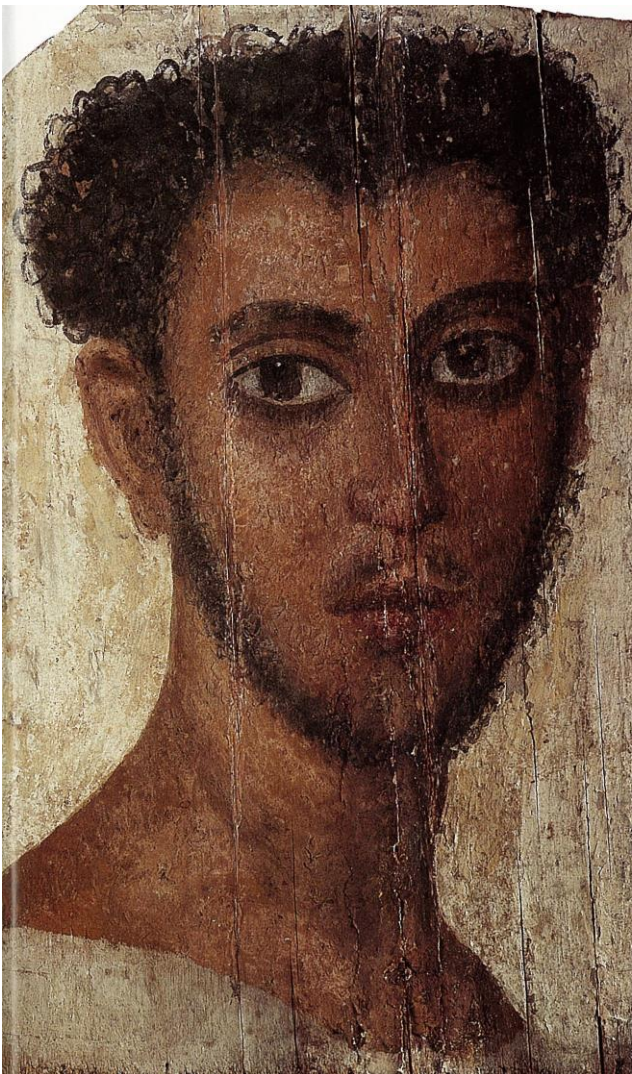


CLAS 202/302
Etruscan and Roman Art

TRIMESTER 2 2015



SCHOOL OF ART HISTORY, CLASSICS & RELIGIOUS STUDIES

VICTORIA UNIVERSITY OF WELLINGTON



FACULTY OF HUMANITIES AND SOCIAL SCIENCES

School of Art History, Classics and Religious Studies

CLASSICS PROGRAMME

**CLAS 202/302: Etruscan and Roman Art
20 POINTS**

TRIMESTER 2 2015

Important dates

Trimester dates: 13 July to 15 November 2015

Teaching dates: 13 July to 16 October 2015

Mid-trimester break: 24 August to 6 September 2015

Study period: 19–23 October 2015

Examination/Assessment Period: 23 October to 14 November 2015

Note: students who enrol in courses with examinations must be able to attend an examination at the University at any time during the scheduled examination period.

Withdrawal dates: Refer to www.victoria.ac.nz/students/study/withdrawals-refunds. If you cannot complete an assignment or sit a test or examination, refer to www.victoria.ac.nz/students/study/exams/aegrotats.

Class times and locations

Lectures:	Monday	10-10:50am	HU LT 323
	Wednesday	10-10:50am	HU LT 323
	Friday	10-10:50am	HU LT 323

Tutorials: There will be 6 tutorials. Please consult the Lecture Programme below for weeks with tutorials. In weeks with tutorials, there will be no Friday lecture. The first tutorials begin in Week 2. Students should sign up for a tutorial via MyAllocator – <https://student-sa.victoria.ac.nz>.

Names and contact details

Course Coordinator and Lecturer:

Dr. Judy Deuling

Room OK517

Phone 463 6783

Email judy.deuling@vuw.ac.nz

Office Hours Anytime not in class between 10am-5pm

Communication of additional information

Notices about any changes in Course Schedule or corrections will be distributed to students via e-mail and Blackboard.

General information (e.g. special lectures in the Classics programme; examination schedule) will be posted on the Classics Notice Board, 5th Floor, Old Kirk.

Prescription

A survey of the history of Etruscan and Roman art including architecture, sculpture, painting and mosaic from 1000 BC to AD 400 with more detailed study of the period from Augustus to Hadrian (27 BC to AD 138).

Course learning objectives (CLOs)

Students who pass this course should be able to:

1. acquire a basic knowledge of the development of the material remains of the Etruscan and Roman regions within Italy and the Mediterranean region along with perception of stylistic and contextual problems associated with such remains;
2. analyse objects within their archaeological and social contexts on the basis of shape, appearance, decoration, style and chronology.

Teaching Format

CLAS 202/302 will be delivered in lecture and tutorial format using visual images to illustrate the material and points throughout. Students are expected to attend both lectures and tutorials; they may wish to take notes regarding content; additionally, students should ask questions in order to clarify and understand points as they are presented and afterwards in tutorial.

As noted above, there are 6 tutorial meetings held fortnightly, beginning in Week 2 extending throughout the trimester as listed in the schedule below. Students are expected to attend and to participate in all tutorials, but 4 of 6 will be an acceptable minimum; note that by missing tutorials, however, a student may miss information, which supplements lectures. If a student misses a tutorial he or she may attend another on approval of the tutor. In ALL instances, however, every effort should be made to attend the tutorial chosen and assigned.

Mandatory course requirements

In addition to achieving an overall pass mark of 50%, students must:

1. submit the Etruscan Image Identification and Discussion;
2. submit the Comparative Essay;
3. sit the Final Examination.

Any student who is concerned that they have been (or might be) unable to meet any of the MCRs because of exceptional personal circumstances, should contact the course coordinator as soon as possible.

Workload

The lecture and tutorial programme is presented in a cumulative fashion—i.e. later material builds on material presented earlier in the term. The examination will be comprehensive. Unless there are exceptional circumstances, it is highly recommended that students prepare for the examination as follows:

Students are expected to prepare for and attend at least 75% of all lectures and tutorials (4 of 6 tutorials are not sufficient but will be considered adequate). Students in CLAS 202/302 are recommended to spend 200 hours spread evenly over the 12-week trimester, break, study week, and examination period. The time spent on work outside class will be an estimate for an average student. The amount of work and time may vary from week to week and from student to student.

Assessment

CLAS 202

CLAS 202 Assessment items and workload per item		%	CLO(s)	Due date
1	Etruscan Image Identification and Discussion (1500 words)	25%	1,2	7 August
2	Comparative Essay (1500-2000 words)	30%	1,2	25 Sept
3	Final Examination (2 hours)	45%	1,2	TBA

1. Etruscan Image Identification and Discussion

Due Friday 7 August 5pm

The Image Identification and discussion exercise will be approximately 1500 words. You will identify and discuss the Etruscan Antefix illustrated and described minimally below.

Identify and describe the item in detail illustrated in the images below, with reference to the minimal description from the dealer's catalogue as noted below. Discuss the item, its material and likely usage, as well as its manufacture and construction. Additionally comment on any other features of interest, such as variations in colour of material. Provide comparative examples to support your conclusions. Do include images coordinated to the text of your discussion.



VUW CLASSICS 2003.1

Material: Reddish brown clay or terracotta, fired with creamy white, red and black pigmentation.
Size: Height, 25.5 cm., Maximum width. 25 cm., Maximum depth 15 cm., Date: 515-485 BCE.

2. Comparative Essay

Due Friday 25 September 5pm

The essay will be 1500 to 2000 words. You will be expected to analyse and to place within its social and historical context a specific example of Roman architecture, sculpture, or an item from the category of wall painting and mosaics. Points to consider include physical description and details about the piece, background and subject, as well as genre, style, technique, and general date. Most important is the discussion of how this item fits within its social and historical context. Include any other information and relevant material. Illustrations (labelled and coordinated to the text) should be included and coordinated to the text by noting the figure number within parentheses (fig. 1) for example. Illustration labels should identify the item, name the museum or collection in which it is currently held, and give the source of the illustration (and page or figure number, if

relevant). Details about each illustration may be included within an 'Illustration List'. Discuss your topic with your tutor or with the lecturer *before* beginning detailed research and analysis.

3. Final Examination

TBA

A two-hour long examination will be held during the end-year examination period. There will be a series of short comprehensive essays covering the areas and items discussed throughout the whole course covering all periods and regions. Note that there will be a selection of essays within each category from which you may choose, writing one essay within each of the general categories. Additionally, there will be a Map Assessment Exercise as part of the Final Examination.

CLAS 302

CLAS 302 Assessment items and workload per item		%	CLO(s)	Due date
1	Etruscan Image Identification and Discussion (1750 words)	20%	1,2	7 August
2	Essay (2000-2500 words)	30%	1,2	25 Sept
3	Final Examination (3 hours)	50%	1,2	TBA

1. Etruscan Image Identification and Discussion

Due Friday 7 August 5pm

See images and short description of **VUW CLASSICS 2003.1** as noted above in p.3 of the course outline. The Image Identification and discussion exercise will be approximately 1750 words. You will identify and discuss the object. Identify and describe the item in detail with reference to the minimal description from the dealer's catalogue as noted above. Discuss the item, its appearance, material and likely usage, as well as its manufacture and construction. Additionally comment on any other features of interest. Provide comparative examples to support your conclusions. Do include images coordinated to the text.

2. Comparative Essay

Due Friday 25 September 5pm

The essay will be 2000 to 2500 words. You will be expected to analyse and compare two items from different periods of time (at least 100 years apart) within one of the following categories: architecture, sculpture, or wall painting and mosaics. At least one item must be considered Roman in origin. If you choose an Etruscan item, select an item or building different from the one selected for the Etruscan Art Analysis.

Points to be considered include physical description and details about each item selected, their backgrounds and subjects, as well as genre, style, technique, and general dates. Include any other information and material relevant to the two items. Illustrations (labelled and relevant to the text) should be included and coordinated to the text of the essay by noting the figure number within parentheses or curved braces (fig. 1) for example. Illustration labels should identify the item, name the museum or collection in which it is currently held, and provide the source of the illustration (and page or figure number if relevant). Details about each illustration may be included within an 'Illustration List'. Discuss your topic with your tutor or with the lecturer *before* beginning detailed research and analysis.

3. Final Examination

TBA

A three-hour long examination will be held during the end-year examination period. There will be a series of short comprehensive essays covering the areas and items discussed throughout the whole course covering all periods and regions. Note that there will be a selection of essays within each category from which you may choose, writing one essay within each of the general categories. There will be a Map Assessment Exercise as part of the final Examination.

Submission and return of work

Essays should be deposited in the Assignments Box, outside OK 508.

It is recommended that students produce *typed* essays.

Essays should **NOT** be placed in lecturers' or tutors' pigeonholes, or under people's doors!

Assessments are usually marked and returned around 2 weeks after they have been submitted.

Work that is late for any reason may experience considerable delays in being returned.

Extensions and penalties

Extensions

Extensions for essays will be granted, where circumstances warrant them, only if permission is first sought, **BEFORE THE DUE DATE**, from Dr Deuling.

Extensions are usually only granted for illness (on production of a medical certificate) or for family bereavement (where production of evidence may be required). Students should note the granting of an extension and its date on their written work to avoid the possibility of being penalised for late submission.

Penalties

In the absence of an extension overdue work may be penalised by 2% per day at the discretion of the instructor. Workload issues do not constitute a compelling reason for the request for an extension. Work which has not been submitted by the examination period has begun runs the risk of not being accepted.

Set texts

- Fred S. Kleiner, *A History of Roman Art*, Enhanced Edition (Wadsworth, Cengage Learning 2007, 2010)
Available from www.vicbooks.co.nz.

Recommended reading

- Nancy H. Ramage & Andrew Ramage, *Roman Art: Romulus to Constantine*, 5th edition. Pearson Prentice Hall, 2009.
- Eve D'Ambra, *Art and Identity in the Roman World* (Everyman Art Library) Orion Publishing Group, 1998.
- Mary Beard and John Henderson, *Classical Art: From Greece to Rome* (Oxford History of Art) Oxford University Press, 2001.
- Jas Elsner, *Imperial Rome and Christian Triumph* (Oxford History of Art) Oxford University Press, 1998.
- Nigel Spivey, *Etruscan Art*, Thames and Hudson, 1997.
- Karl Galinski, ed. *The Cambridge Companion to the Age of Augustus*, Cambridge University Press, 2005/8.

Class representative

The class representative provides a useful way to communicate feedback to the teaching staff during the course. A class representative will be selected at the first lecture of the course. Students may like to write the Class Rep's name and details in this box:

Class Rep name and contact details:

Student feedback

Presently there is no student feedback on line for this course. However, changes are made continually to lectures and tutorials. In addition, the lecture outlines and synopses are now available on Blackboard. Towards the end of term, students will have the opportunity to provide assessment of the course itself as well as lecturing and tutorials.

Student feedback on University courses may be found at www.cad.vuw.ac.nz/feedback/feedback_display.php.

Other important information

The information above is specific to this course. There is other important information that students must familiarise themselves with, including:

- Academic Integrity and Plagiarism: www.victoria.ac.nz/students/study/exams/integrity-plagiarism
- Aegrotats: www.victoria.ac.nz/students/study/exams/aegrotats
- Academic Progress: www.victoria.ac.nz/students/study/progress/academic-progress (including restrictions and non-engagement)
- Dates and deadlines: www.victoria.ac.nz/students/study/dates
- FHSS Student and Academic Services Office: www.victoria.ac.nz/fhss/student-admin
- Grades: www.victoria.ac.nz/students/study/progress/grades
- Resolving academic issues: www.victoria.ac.nz/about/governance/dvc-academic/publications
- Special passes: www.victoria.ac.nz/about/governance/dvc-academic/publications
- Statutes and policies including the Student Conduct Statute: www.victoria.ac.nz/about/governance/strategy
- Student support: www.victoria.ac.nz/students/support
- Students with disabilities: www.victoria.ac.nz/st_services/disability
- Student Charter: www.victoria.ac.nz/learning-teaching/learning-partnerships/student-charter
- Student Contract: www.victoria.ac.nz/study/apply-enrol/terms-conditions/student-contract
- Subject Librarians: <http://library.victoria.ac.nz/library-v2/find-your-subject-librarian>
- Turnitin: www.cad.vuw.ac.nz/wiki/index.php/Turnitin
- University structure: www.victoria.ac.nz/about/governance/structure
- Victoria graduate profile: www.victoria.ac.nz/learning-teaching/learning-partnerships/graduate-profile
- VUWSA: www.vuwsa.org.nz