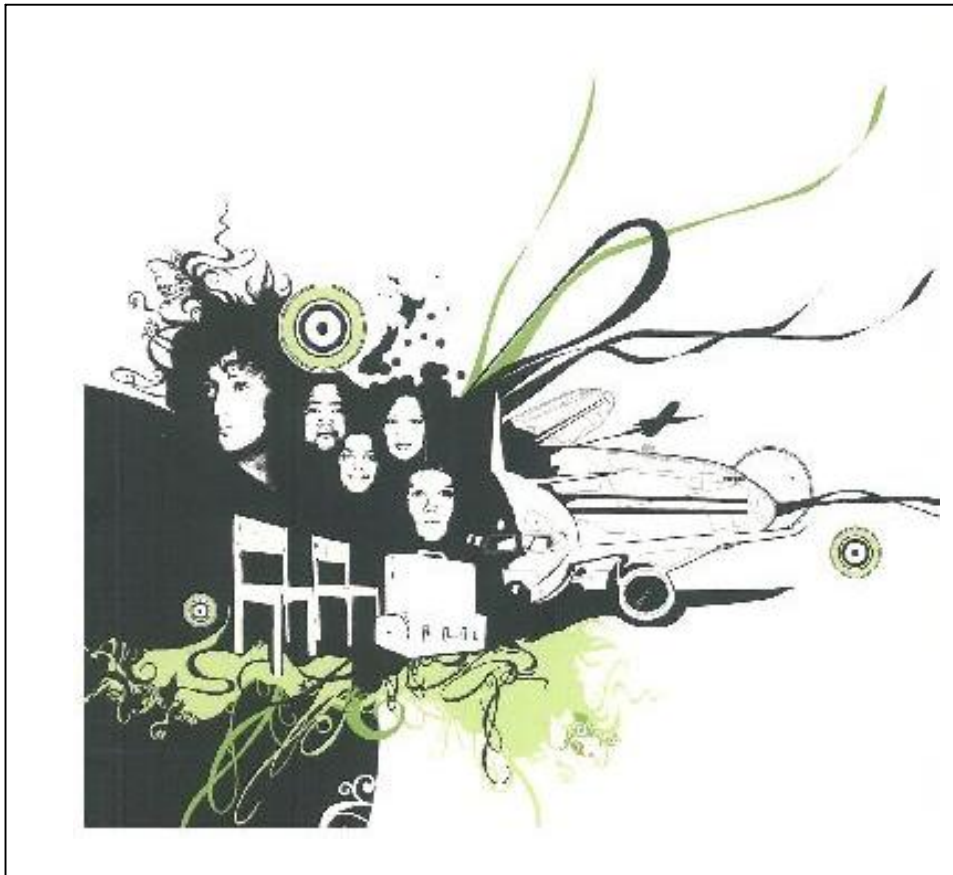


# ENGL/THEA112 Cultural Encounters: The Literature & Theatre of Aotearoa New Zealand & the Pacific

Trimester 2 2009

18 Points



## TRIMESTER DATES

Teaching dates: 13 July to 16 October 2009

Study week: 19 to 23 October 2009

Examination/Assessment period: 27 October to 15 November 2009

**Note:** Students who enrol in courses with examinations are expected to be able to attend an examination at the University at any time during the formal examination period.

## NAMES AND CONTACT DETAILS

Course Coordinators:

David O'Donnell

david.odonnell@vuw.ac.nz

4636828

office 301 77 Fairlie Tce

Alice Te Punga Somerville

alice.tepungasomerville@vuw.ac.nz

4636818

office 208 50 Kelburn Pde

## CLASS TIMES AND LOCATIONS

### Lectures

Tues , Thurs, Fri     1pm-2pm     New Kirk LT301

### Tutorials

Information about tutorial times and rooms will be supplied on Blackboard and in the first lecture.

## COURSE DELIVERY

This course is delivered through lectures (three per week) and tutorials (you attend one per week). While brief lecture notes will be added to Blackboard over the course of the trimester, you should not assume that reading those notes will be a complete replacement for that we cover in a lecture.

## COMMUNICATION OF ADDITIONAL INFORMATION

- Updated information about the course, and all handouts etc relating to the course, are posted on the Blackboard site for this course.
- Joining in the discussion about texts and issues on the class blackboard site is encouraged.
- Access to the blackboard site is available through <http://blackboard.vuw.ac.nz/>
- Please contact your tutor or one of the Course Coordinators if you have any questions or need further clarification about any aspect of the course.

## COURSE CONTENT

Much of the literature and theatre from, or about, Aotearoa New Zealand and the Pacific is concerned with the encounters occurring within and between the region's various cultures. In this course you will learn about the part that written, spoken, and performed narratives play in representing, and even shaping, such encounters.

The course is designed to expose you to a range of concepts relevant to more advanced students in literature and the theatre; it will equip you with an understanding of the cultural and historical contexts of the material you are studying; and it will foster your ability to respond critically to a range of literary and theatrical texts and present your findings in formal assessment tasks.

## LEARNING OBJECTIVES

By the end of the course you should:

- be familiar with all of the texts studied in the course;
- have developed some sense of the comparative historical and cultural contexts of the range of texts studied;
- be able to read texts critically and discuss your findings in a formal academic essay;
- be responsive to the detail of selected passages of literature and drama and demonstrate your responsiveness in a variety of assessment tasks;
- be familiar with the literary, theatrical, social and political implications of the concept of 'cultural encounters.'

## EXPECTED WORKLOAD

For a course at 100-level, it is recommended that you spend *on average* 12 hours per week including class contact hours. Therefore, you should spend about 8 hours of your own time on reading, research and preparation.

## READINGS

For the first two weeks of trimester all undergraduate textbooks and student notes will be sold from the Memorial Theatre foyer, while postgraduate textbooks and student notes will be available from the top floor of VicBooks in the Student Union Building, Kelburn Campus. After week two all undergraduate textbooks will be sold from VicBooks and student notes from the Student Notes Distribution Centre on the ground floor of the Student Union Building. You can order textbooks and student notes online at [www.vicbooks.co.nz](http://www.vicbooks.co.nz) or can email an order or enquiry to [enquiries@vicbooks.co.nz](mailto:enquiries@vicbooks.co.nz). Books can be couriered to you or they can be picked up from the shop. You will be contacted when they are available.

### Essential texts (in order of reading):

- Miria George. *And What Remains*. Wellington: Tawata, 2007.
- Tuwhare readings – in Student Notes
- Renee. *Jeannie Once*. Wellington: VUP, 1991.
- Short Fiction - in Student Notes
- Hone Kouka. *Waiora*. Wellington: Huia, 2000.
- Witi Ihimaera. *Bulibasha*. Auckland: Penguin, 1998.
- Lynda Chanwai Earle. *Ka Shue*. Wellington: Women's Play Press, 2003.
- Makerita Urale. *Frangipani Perfume*. Wellington: Play Press, 2005.
- Karlo Mila. *Dream Fish Floating*. Wellington: Huia, 2005.
- Ken Duncum. *Cherish*. Wellington: VUP, 2005.

## ASSESSMENT REQUIREMENTS

Each of these assessments has been designed to focus on a different aspect of the overall objectives of the course.

Assessment	% of final mark	Due date
Test (close reading)	10	30 July (in class)
Essay #1 (focus on single text)	25	24 August (5pm)
Essay #2 (focus on comparison)	25	28 September (5pm)
Final exam	40	tba

**10% Compulsory In-class Test**

The test will be held on Thursday 30 July, during lecture time. You must take the test at this time; make-up tests will only be granted in exceptional circumstances.

**25% Essay #1 (focus on single text)**

Due by 5pm Monday 24 August: place in essay box, 8<sup>th</sup> floor Von Zedlitz.

Please note that this is the first day of the mid-trimester break. If you will be out of town for the break you are welcome to hand in your essay early 😊

Length: 1000-1200 words.

**25% Essay #2 (focus on comparison)**

Due by 5pm Monday 28 September: place in essay box, 8<sup>th</sup> floor Von Zedlitz.

Length: 1000-1200 words.

**40% Final examination**

The three-hour exam is made up of three sections: one has a theatre focus, one has a literature focus, and one is comparative.

**ASSIGNMENT COVER SHEETS**

Assignment cover sheets and extension forms can be found on Blackboard or outside the Programme office. Remember to fill in your tutor's name.

**PENALTIES AND EXTENSIONS**

Unless there are exceptional circumstances (e.g., medical reasons with certificate), or a previously agreed extension, work handed in late will normally lose half a grade (2½%) for each weekday or part-weekday late, starting from the hour the work is due. Comments on late work will be minimal. Work submitted late without an extension will not normally be accepted if it is more than two weeks after the due date. **Note:** if you fail to hand in work by this two-week deadline, you will normally be considered as having failed to meet a mandatory requirement and therefore fail the course.

Aegrotat provisions may apply if you are unable to submit your final project for unavoidable reasons. The Aegrotat procedures are listed in *Victoria University Calendar* available in hardcopy or under “about Victoria” on the Victoria homepage at:

[http://www.victoria.ac.nz/home/about\\_victoria/calendar\\_intro.html](http://www.victoria.ac.nz/home/about_victoria/calendar_intro.html)

### **Extensions**

If you wish to ask for an extension (e.g., because of pressure of work) please do so well before the due date. Extension requests on the day the assignment is due will not normally be accepted.

Requests for extensions must be made in writing, by filling out the extension form (available on your course Blackboard site) and getting your Course Co-ordinator to sign it. Only Course Co-ordinators may grant extension, not tutors. The signed Extension form must be attached to the assignment when it is submitted, plus any relevant documentation. If circumstances prevent you from accessing the extension form, you must attach an email from the Course Co-ordinator, which confirms that an extension has been granted, to your assignment. In real emergencies we can of course be flexible, but the most important thing is for you to somehow let us know as soon as possible.

Extensions will not be granted beyond **16 October 2009**, except under exceptional circumstances. The University does not permit the School to accept work after the last day of the examination period.

In such a case you should also contact the Course Co-ordinator. There is a university policy on reasonable accommodation with respect to assessment procedures for students with disabilities (see *Calendar* as above).

### **MANDATORY COURSE REQUIREMENTS**

In order to pass this course, you need to hand in all pieces of written work. Additionally, according to the rules of the School, you also need to attend at least 8 of the *tutorials* in order to pass this course.

### **STATEMENT ON LEGIBILITY**

You are expected to present work that meets appropriate standards. Work submitted during the course (i. e. work that is internally assessed) should be typed or prepared on a computer. Work submitted in the final examination will obviously be handwritten. You are expected to write clearly. Where work is deemed 'illegible', you will be given a photocopy of the work and asked to transcribe it to an acceptable standard (preferably typed) within a specified time frame.

### **ACADEMIC INTEGRITY AND PLAGIARISM**

Academic integrity means that university staff and students, in their teaching and learning are expected to treat others honestly, fairly and with respect at all times. It is not acceptable to mistreat academic,

intellectual or creative work that has been done by other people by representing it as your own original work.

Academic integrity is important because it is the core value on which the University's learning, teaching and research activities are based. Victoria University's reputation for academic integrity adds value to your qualification.

The University defines plagiarism as presenting someone else's work as if it were your own, whether you mean to or not. 'Someone else's work' means anything that is not your own idea. Even if it is presented in your own style, you must acknowledge your sources fully and appropriately. This includes:

- Material from books, journals or any other printed source
- The work of other students or staff
- Information from the internet
- Software programs and other electronic material
- Designs and ideas
- The organisation or structuring of any such material

Find out more about plagiarism, how to avoid it and penalties, on the University's website:

<http://www.victoria.ac.nz/home/study/plagiarism.aspx>

#### **GENERAL UNIVERSITY POLICIES AND STATUTES**

You should familiarise themselves with the University's policies and statutes, particularly the Assessment Statute, the Personal Courses of Study Statute, the Statute on Student Conduct and any statutes relating to the particular qualifications being studied; see the Victoria University Calendar or go to the Academic Policy and Student Policy sections on: <http://www.victoria.ac.nz/home/about/policy>

The AVC (Academic) website also provides information in a number of areas including Academic Grievances, Student and Staff conduct, Meeting the needs of students with impairments, and student support/VUWSA student advocates. This website can be accessed at:

<http://www.victoria.ac.nz/home/about/avcademic/Publications.aspx>

**COURSE PROGRAMME**

We will start with a recent and controversial play by a young playwright, Miria George. *And What Remains* ask about what it means to be in this place: this is a great start for our course about 'Cultural Encounters.'

After we have read that play and considered its reception, we will move backwards and sideways through the literature and theatre of Aotearoa New Zealand and the Pacific, thinking through the themes raised by the play: Indigeneity, migration, colonialism, gender, national identity, globalisation, sexuality, the idea of home and so on.

Over the course of ENGL/THEA112 you will come into contact with a range of literary and theatrical genres, written and produced by people situated in very different ethnic, gender, economic, political and social locations. In each text, and between the texts, and between yourself and the texts, we challenge you to think carefully and deeply about the idea of 'Cultural Encounters.'

Week 1	14 July	Introduction
	16 July	<i>And What Remains</i>
	17 July	<i>And What Remains</i>
Week 2	21 July	<i>And What Remains</i>
	23 July	<i>And What Remains</i> / Tuwhare
	24 July	Tuwhare
Week 3	28 July	Tuwhare
	30 July	Test (in class)
	31 July	<i>Jeannie Once</i>
Week 4	4 Aug	<i>Jeannie Once</i>
	6 Aug	<i>Jeannie Once</i>
	7 Aug	Short fiction
Week 5	11 Aug	Short fiction (essay 1 due: 10 Aug 5pm)
	13 Aug	Short fiction
	14 Aug	Short fiction/ <i>Waiora</i>
Week 6	18 Aug	<i>Waiora</i>
	20 Aug	<i>Waiora</i>
	21 Aug	<i>Waiora</i> / <i>Bulibasha</i>

**Mid Trimester Break:** Monday 24 August– Friday 4 September 2009

Week 7    8 Sept    *Bulibasha*  
               10 Sept    *Bulibasha*  
               11 Sept    *Bulibasha*

Week 8    15 Sept    *Ka Shue*  
               17 Sept    *Ka Shue*  
               18 Sept    *Ka Shue/ Frangipani Perfume*

Week 9    22 Sept    *Frangipani Perfume*  
               24 Sept    *Frangipani Perfume*  
               25 Sept    *Frangipani Perfume/ Mila*

Week 10    29 Sept    Mila (essay 2 due: 28 Sept 5pm)  
               1 Oct        Mila  
               2 Oct        Mila

Week 11    6 Oct        Mila  
               8 Oct        *Cherish*  
               9 Oct        *Cherish*

Week 12    13 Oct        *Cherish*  
               15 Oct        Debate  
               16 Oct        Wrap up/ exam prep

**Study Period:** Monday 19 to Friday 23 October 2009

**Examination Period:** Tuesday 27 October – Sunday 15 November 2009