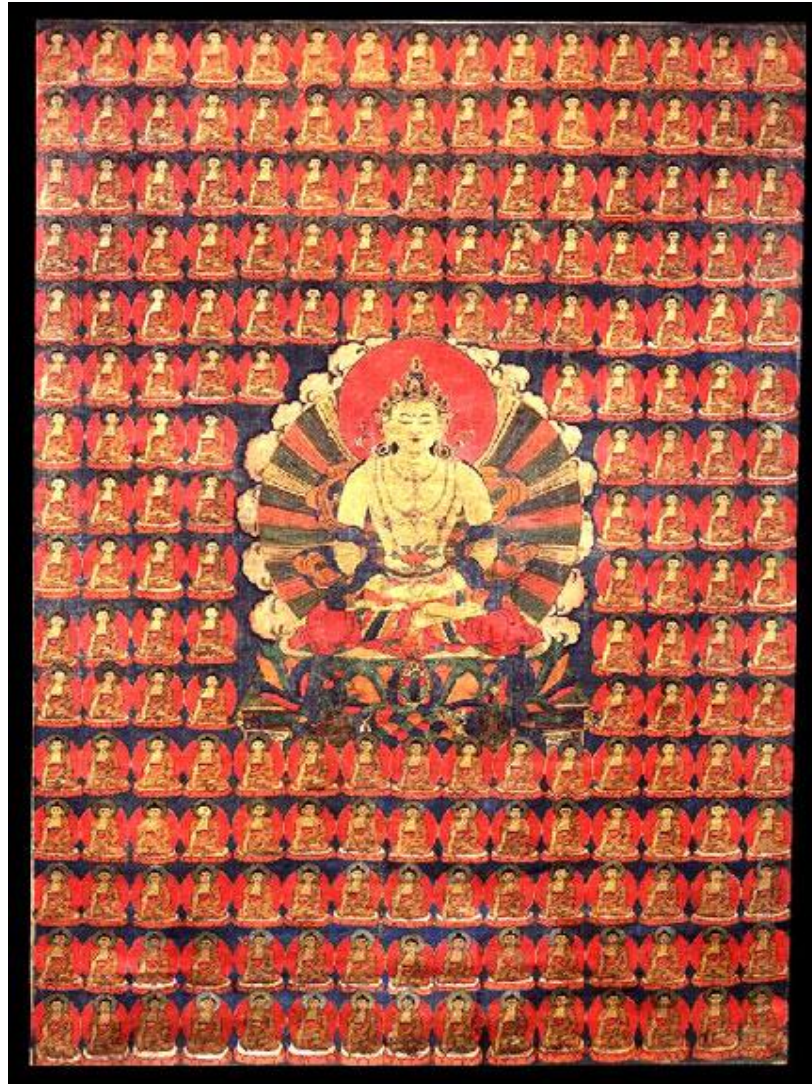


RELI 427

Advanced Studies in Religious Texts



Religious Studies Programme

Te Tari Matai Whakapono

SCHOOL OF ART HISTORY, CLASSICS & RELIGIOUS STUDIES

VICTORIA UNIVERSITY OF WELLINGTON

2008

Reli 427
Advanced Studies in Religious Texts

Course co-ordinators: Professor Paul Morris HU 316 Tel: 463 5037
Dr Michael Radich HU 217 Tel: 463 9477
michael.radich@vuw.ac.nz

Meeting time and location TBA

Religious Studies is in the Hunter building. The Programme Administrator, Alik Kalliabetos, is in Hunter 318 (463 5299). **Notices regarding the course or any information on changes will be posted on the department notice board outside her office.**

Office Hours: The main office is open Monday - Thursday, 9.30am - 12:00 noon and 2:00 – 3:30pm.

Course outline

- 1 **Required Readings:** Readings will be distributed by the religious Studies programme

The course is internally assessed by means of the following assignments:

Mandatory course requirements: one essay of 5000 words.

- 2 **Work-load (Recommendation of the Faculty of Humanities and Social Sciences):** For 400-level 30 points one trimester courses, 15 hours per week are recommended. An average student should spend 12 hours per week for preparation, reading and writing in addition to attendance at lectures and tutorials.

400 – level

2 trimester

30 points

3 General University statutes and policies

Students should familiarise themselves with the University's policies and statutes, particularly the Assessment Statute, the Personal Courses of Study Statute, the Statute on Student Conduct and any statutes relating to the particular qualifications being studied; see the Victoria University Calendar available in hardcopy or under "about Victoria" on the VUW homepage at:

http://www.victoria.ac.nz/home/about_victoria/calendar_intro.html

Information on the following topics is available electronically at:

http://www.victoria.ac.nz/home/studying/downloads/course_outlines_general_information.pdf

- Academic Grievances
- Student and Staff Conduct
- Meeting the Needs of Students with Impairments
- Student Support

4 Academic grievances

If you have any academic problems with your course you should talk to the tutor or lecturer concerned; class representatives may be able to help you in this. If you are not satisfied with the result of that meeting, see the Head of School or the relevant Associate Dean; VUWSA Education Coordinators are available to assist in this process. If, after trying the above channels, you are still unsatisfied, formal grievance procedures can be invoked. These are set out in the Academic Grievance Policy which is published on the VUW website at:

www.victoria.ac.nz/policy/academicgrievances

5 Student and staff conduct

The Statute on Student Conduct together with the Policy on Staff Conduct ensure that members of the University community are able to work, learn, study and participate in the academic and social aspects of the University's life in an atmosphere of safety and respect. The Statute on Student Conduct contains information on what conduct is prohibited and what steps are to be taken if there is a complaint. For information about complaint procedures under the Statute on Student Conduct, contact the Facilitator and Disputes Advisor or refer to the statute on the VUW policy website at:

www.victoria.ac.nz/policy/studentconduct

The Policy on Staff Conduct can be found on the VUW website at:

www.victoria.ac.nz/policy/staffconduct

6 **Students with Impairments** (see Appendix 3 of the Assessment Handbook)

The University has a policy of reasonable accommodation of the needs of students with disabilities. The policy aims to give students with disabilities the same opportunity as other students to demonstrate their abilities. If you have a disability, impairment or chronic medical condition (temporary, permanent or recurring) that may impact on your ability to participate, learn and/or achieve in lectures and tutorials or in meeting the course requirements, please contact the course coordinator as early in the course as possible. Alternatively, you may wish to approach a Student Adviser from Disability Support Services (DSS) to discuss your individual needs and the available options and support on a confidential basis. DSS are located on Level 1, Robert Stout Building:

telephone: 463-6070

email: disability@vuw.ac.nz

The name of your School's Disability Liaison Person is in the relevant prospectus or can be obtained from the School Office or DSS.

7 **Student Support**

Staff at Victoria want students to have positive learning experiences at the University. Each faculty has a designated staff member who can either help you directly if your academic progress is causing you concern, or quickly put you in contact with someone who can. In the Faculty of Humanities and Social Sciences the support contacts are **Dr Allison Kirkman, Murphy Building, room 407** and **Dr Stuart Brock, Murphy Building, room 312**. Assistance for specific groups is also available from the Kaiwawao Māori, Manaaki Pihipihinga or Victoria International.

Manaaki Pihipihinga Programme

This programme offers:

- Academic mentoring for all Māori & Pacific students at all levels of undergraduate study for the faculties of Commerce & Administration and Humanities & Social Sciences. Contact Manaaki-Pihipihinga-Programme@vuw.ac.nz or phone 463 6015 to register for Humanities & Social Science mentoring and 463 8977 to register for mentoring for Commerce and Administration courses
- Postgraduate support network for the above faculties, which links students into all of the post grad activities and workshops on campus and networking opportunities
- Pacific Support Coordinator who can assist Pacific students with transitional issues, disseminate useful information and provide any assistance needed to help students achieve. Contact; Pacific-Support-Coord@vuw.ac.nz or phone 463 5842.

Manaaki Pihipihinga is located at: 14 Kelburn Parade, back court yard, Room 109 D (for Humanities mentoring & some first year Commerce mentoring) or Room

210 level 2 west wing railway station Pipitea (commerce mentoring space).
Māori Studies mentoring is done at the marae.

Student Services

In addition, the Student Services Group (email: student-services@vuw.ac.nz) is available to provide a variety of support and services. Find out more at:

www.victoria.ac.nz/st_services/

VUWSA employs Education Coordinators who deal with academic problems and provide support, advice and advocacy services, as well as organising class representatives and faculty delegates. The Education Office (tel. 463-6983 or 463-6984, email at education@vuwsa.org.nz) is located on the ground floor, Student Union Building.

- 8 **Taping of Lectures:** All students in the School of Art History, Classics and Religious Studies are welcome to use audio-tapes to record lectures. If you want to do this, please see your lecturer, tutor or the relevant programme administrator and complete a disclaimer form which advises of copy right and other relevant issues.
- 9 **Use of Turnitin:** Student work provided for assessment in this course *may be* checked for academic integrity by the electronic search engine <<http://www.turnitin.com>>. Turnitin is an online plagiarism prevention tool which identifies material that may have been copied from other sources including the Internet, books, journals, periodicals or the work of other students. Turnitin is used to assist academic staff in detecting misreferencing, misquotation, and the inclusion of unattributed material, which may be forms of cheating or plagiarism. *At the discretion of the School, handwritten work may be copy typed by the School and subject to checking by Turnitin.* You are strongly advised to check with your tutor or the course coordinator if you are uncertain about how to use and cite material from other sources. Turnitin will retain a copy of submitted materials on behalf of the University for detection of future plagiarism, but access to the full text of submissions will not be made available to any other party.
- 10 **Class representatives:** Class representatives are elected in the first week or two of the term. They are supported by the VUW Students' Association, and have a variety of roles, including assistance with grievances and student feedback to staff and VUWSA. Contact details for your class rep will be listed on the Religious Studies notice board.
- 11 **Aegrotat regulations** apply to internally assessed courses. Students who are ill, or who have difficult personal circumstances may be having problems completing assessment. The aegrotat provisions apply to all courses and apply to assessment which falls within the last three weeks of teaching or the final examination period, including preparation time for final tests and examinations.

Aegrotat provisions are detailed in section 4.5 of the Assessment Statute (2007 *Calendar*, p. 96) and also on p. 23 of the 2006 *Assessment Handbook*. Students can refer to the University's website for further information:

<http://www.vuw.ac.nz/timetables/aegrotat.aspx>.

Application forms and information pamphlets should be obtained from the Faculty Student and Academic Services Office (MY 411) or the Manager, Student & Academic Services (MY 410).

12 Evaluation: This course will be evaluated by UTDC.

SEMINAR SCHEDULE

TRIMESTER ONE

RELI 427, "Advanced Studies in Religious Texts"

Trimester 1, 2008

Instructor: Michael Radich

ph (463)9477

michael.radich@vuw.ac.nz

HU 216

The aim of this half of the course is to examine some sample primary texts expounding Mahāyāna Buddhist ideas of *samādhi* ("concentration"; usually taken to refer to a meditative state or attainment), and probe these texts for their implications for our knowledge of Mahāyāna religious practice. In the pursuit of this aim, we will focus particularly on one very interesting and well-studied exemplar of this class of texts, the *Pratyutpanna-buddha-sammukhāvasthita-samādhi-sūtra* (PBSASS). We will also read widely in the relevant scholarly literature.

The course will be assessed on **one essay of 5000 words**. Like all Honours work, this essay is finally due on **Friday October 10 2008**. However, this part of the course (Buddhist texts with Michael Radich) is run in T1 only, and Michael Radich will be on research leave in T2. There will therefore be a final deadline for those essays on **Friday June 13 2008**. Please note also that at Honours level, your research work is guided, and our intention is that you will take advantage of the detailed feedback we provide on essays when first submitted, to substantially rework and improve them where possible. I will therefore require that you discuss with me a research topic and provide a draft bibliography in **Week 6** (by **Friday April 4**). I will also require that you give me your best attempt at a finished version of the essay, for possible reworking where I think it admits of further improvement thereafter, by **Week 11** (i.e. by **Friday May 23**). The deadline structure is thus:

Friday April 4	Research topic and draft bibliography
Friday May 23	Your best polished draft of the essay
Friday June 13	Final deadline for revisions based on feedback
Friday October 10	Final deadline for all Honours work programme-wide

Failure to meet any of these deadlines will be reported to the Honours Coordinator.

READINGS

At the outset of the course, readings will only be set for the first four to five weeks. Readings for subsequent weeks will be decided in part on the basis of student interest, as it emerges in our discussions.

Week One

General Honours meeting and scheduling; distribution of readings for Week 2.

Week Two

The *Sāmaññaphala-sutta* (*Dīgha-nikāya* [DN] 2), Maurice Walshe, trans

Beyer, Stephan V.

Gethin, Rupert

Week Three

Harrison, Paul H.

Sharf, Robert H.

Skilton, Andrew

Week Four

Deleanu, Florin

Harrison, Paul

Schmithausen, Lambert

Week Five and Six

Harrison, Paul Maxwell, trans

Friday April 4	Research topic and draft bibliography due
-----------------------	--

Week Seven: Secondary literature round-table

Students are each to choose two to three articles from the attached bibliography (I may distribute an updated and expanded version of this bibliography nearer to the time), and to prepare to summarise them to the class for discussion. Your selection of articles should preferably be united around a common theme, and considered in part as exploration and preparation towards your final essay topic. Students are also encouraged to do their own research and request to present articles not found in the attached list, but must consult with me to ensure they are of a reasonable standard.

Week Eight: Student presentations

At least half of our classtime this week will be devoted to students presenting their ideas and work to date for their final essays, and discussion and feedback.

Friday May 23	Your best polished draft of essay due
----------------------	--

Friday June 13	Final deadline for revisions to essay based on feedback
-----------------------	--

Essays and Assignments

1 **Essays and assignments** must be placed in the locked assignment box located near the administrator's office and students must date and sign the essay register to indicate submission. **No responsibility will be taken for assignments for which there is no record. Students should keep a copy of all their work until it is returned.**

2 **Due dates for first trimester:**

Friday April 4	Research topic and draft bibliography
Friday May 23	Your best polished draft of the essay
Friday June 13	Final deadline for revisions based on feedback
Friday October 10	Final deadline for all Honours work programme-wide

3 **Penalties for late essays / assignments:**

- 1 percent per 24 hours will be deducted for late essays.
- essays submitted more than two weeks late will not be accepted for assessment unless prior written arrangement has been made with the lecturer.

Essays submitted late due to medical reasons must be given to the programme administrator accompanied by a doctor's certificate.

4 **Academic integrity and Plagiarism**

Academic integrity is about honesty – put simply it means **no cheating**. All members of the University community are responsible for upholding academic integrity, which means staff and students are expected to behave honestly, fairly and with respect for others at all times.

Plagiarism is a form of cheating which undermines academic integrity. Plagiarism is **prohibited** at Victoria.

The University defines plagiarism as follows:

Plagiarism is presenting someone else's work as if it were your own, whether you mean to or not.

'Someone else's work' means anything that is not your own idea, even if it is presented in your own style. It includes material from books, journals or any other printed source, the work of other students or staff, information from the Internet, software programmes and other electronic material, designs and ideas. It also includes the organization or structuring of any such material.

Plagiarism is not worth the risk.

Any enrolled student found guilty of plagiarism will be subject to disciplinary procedures under the Statute on Student Conduct (www.victoria.ac.nz/policy/studentconduct) and may be penalized severely. Consequences of being found guilty of plagiarism can include:

- an oral or written warning
- suspension from class or university
- cancellation of your mark for an assessment or a fail grade for the course.

Find out more about plagiarism and how to avoid it, on the University's website at:

www.victoria.ac.nz/home/studying/plagiarism.html.

- 5 **For guidance in essay writing** and presentation of bibliographies please refer to Religious Studies guidelines for essays, attached. Essay topics are to be discussed with the course coordinators.