

# Annual Report 2015

---

VICTORIA UNIVERSITY OF WELLINGTON FOUNDATION



Contents

- 2

From the Chair
- 3

From the Vice-Chancellor
- 4

Our year
- 5

Generous endowment for research centre from Gama Foundation
- 6

First-in-family scholarships change lives
- 8

Ancient collection adds wealth of knowledge
- 10

Earthquake Commission backs groundbreaking programme
- 11

Passion and pragmatism behind untied bequest
- 12

Funding gives drug discovery chemistry real traction
- 13

Law prize honours top New Zealand judge
- 14

Individual sacrifice marked by epic symphony
- 16

Trust for young photographers enters new era
- 17

Visiting Chair sheds light on global “footnote”
- 18

Our year in pictures
- 20

Victoria Benefactors’ Circle
- 22

Victoria Legacy Club
- 24

U.K. and U.S. Friends
- 25

Donations received
- 28

Disbursements
- 30

Financial statements



Foundation trustees



1. Craig Stevens (Chair) 2. Judge Ian Borrin (Deceased March 2016) 3. Prue Flacks (to February 2015) 4. Steven Fyfe 5. Professor Grant Guilford (Vice-Chancellor)  
6. Ewan Henderson 7. Sir Neville Jordan KNZM, DistFIPENZ (Chancellor) 8. Leo Lonergan (Deputy Chair) 9. Brent Manning 10. Elaine McCaw (to February 2015)  
11. Ian McKinnon CNZM QSO JP (to January 2015) 12. Simon Murdoch CNZM (to February 2015) 13. Kerry Prendergast CNZM 14. Brian Roche (to August 2015)  
15. Helen Sutch (to December 2015)

At a glance

\$10.9 million

RAISED IN DONATIONS

\$2.6 million

EARNED ON INVESTMENTS

\$45 million  
DISTRIBUTED SINCE 1990

267 members  
OF VICTORIA BENEFACTORS' CIRCLE

82 members  
OF VICTORIA LEGACY CLUB



## From the Chair

At the beginning of 2015, I was delighted to be appointed chair of the Victoria University Foundation and continue a journey started more than twenty-five years ago, when our charitable trust was first created. The Foundation has, in that time, paid out more than \$45 million for the benefit of the University—to advance knowledge and to disseminate and maintain that knowledge through teaching and research. In the past year, the University has started to embed its new strategic vision. The Foundation supports that vision and has set upon a path that reflects these strategic goals, seeking funds for priority projects that could not otherwise proceed.

In 2015, the Foundation's revenue and investment portfolios both had a sharp rise thanks to the philanthropic support of a range of organisations and individuals. One of those donations was an incredibly generous \$7 million from the Gama Foundation for Victoria University's Institute for Governance and Policy Studies. The Institute was established in 2012 from an earlier \$3 million endowment from the Gama Foundation, a charitable trust set up by Christchurch philanthropists Grant and Marilyn Nelson. Their enduring support for Victoria is making a tangible difference in strengthening the University's reputation and ability to achieve its goal of advancing better government.

The Foundation's revenue for 2015 was \$13.5 million, significantly higher than the \$7.3 million achieved in 2014. This revenue came from \$10.9 million in donations and \$2.6 million from investment earnings, equating to a 12-month aggregate return of 8.8 percent. As a result, the Foundation's total funds grew to more than \$42 million year-end 2015. The trustees approved a distribution of 6.1 percent of these investment earnings to maintain the real

capital value of endowed funds and to provide ongoing support. Approximately three quarters of the Foundation's investment portfolio is held for endowed capital funds, which ensures that the benefit of those numerous endowed projects will be long lasting.

The Victoria University Foundation Trustees' Scholarship is a project that has given me much satisfaction since joining the board. This scholarship offers first-in-family students a major helping hand to study at Victoria. I am pleased to advise that, to date, five students have received the benefit of these scholarships, and the inaugural scholar, Vinny Carroll, is now pursuing Master's study.

**My fellow trustees join me in thanking our many donors and sponsors who have contributed to the Foundation, thereby offering valuable support to the University. I also extend my gratitude to the Development Office staff and to the trustees—particularly to deputy chair Leo Lonergan—for their wisdom and energy in guiding the Foundation's activities over the past year.**

I would like to acknowledge the considerable contribution of those trustees who completed their tenure in 2015—my predecessor Elaine McCaw and also Prue Flacks, Ewan Henderson, Ian McKinnon, Simon Murdoch, Brian Roche, Helen Sutch and Rick Zwaan—and welcome our new trustees—Robyn Bargh, Rick Christie, Bernadette Courtney, Jonathan Gee, Sir Neville Jordan, Farib Sos and Sir Maarten Wevers.

It is with great sadness that we have learned of the death of Judge Ian Borrin on 23 March 2016. Ian continued to contribute his advice and support to the board despite suffering from long illness. We offer sincere condolences to his partner Jenny George and family.

We, the Foundation, look forward to continuing to assist Victoria University in achieving its vision of being a world-leading capital city university and one of the great global-civic universities.

Craig Stevens



As friends of Victoria University, you play an enormously valuable role. The financial support we receive through the University Foundation is incredibly important to Victoria. It allows us to assist more students, through prizes and scholarships, and to improve the student experience by developing new teaching programmes and leading-edge facilities.

It also enables us to further strengthen the quality, quantity and impact of our research by establishing new academic positions and research institutes, building library and art collections and presenting events that engage our communities, such as public lectures.

As supporters of Victoria, you also play a significant role in the success of the University through your own achievements. Many of you are making important contributions to the economic and social wellbeing of our city and our country and, in doing so, are building the standing of the University. We value your wisdom, guidance, involvement and influence. With your support and connections we have the opportunity to take Victoria on a remarkable journey to be a world-leading capital city

## From the Vice-Chancellor

university and one of the great global-civic universities. Our strategic plan sets out a number of strategies that focus and enable this vision. This report demonstrates how the work of the Foundation supports the strategic plan and the wider goals of Victoria.

**Among those is our intent to develop a distinctive academic emphasis: we have identified eight cross-disciplinary themes derived from our positioning as New Zealand's globally ranked capital city university that frame and develop our teaching, research and public engagement.**

Professor John Psathas's epic symphony *No Man's Land* is a spectacular example of one of those themes, cultivating creative capital. This outstanding work illustrates what Victoria can do in this area and how we can take it to the world with the help of our generous supporters. The Earthquake Commission's twenty-plus year investment in Victoria's expertise in earthquake science is another example of philanthropic support reinforcing our unique academic strengths, in this case, enhancing the resilience and sustainability of our natural heritage and capital.

Securing the intellectual potential put at risk through experience of disadvantage is a strategy that is vital to ensuring that New Zealand has the opportunity to employ talented and qualified staff that represent the diversity of our society. The Foundation's work in developing a first-in-family programme, which supports young New Zealanders who would not otherwise have the opportunity to attend university, is an important driver of progress in this area. There are many other stories highlighted in this report that offer a glimpse of the breadth and depth of initiatives supporting our ambitious plans for the University. All have the backing of generous and visionary donors and supporters, to whom I extend my sincerest thanks.

I would also like to thank Shelagh Murray, who served as executive director of Development and the Foundation until late 2015. Shelagh made a significant contribution to Victoria's fundraising in her five years here and has left us in good stead.

Professor Grant Guilford

# Our year

With your support, the Victoria University of Wellington Foundation has raised and distributed funds for many and varied projects at Victoria in 2015. These projects reflect the interests of our donors and sponsors and the strategic priorities of the University as it sets out to become a world-leading capital city university and one of the great global-civic universities.

This annual report provides just a glimpse of the generosity that has enabled Victoria to undertake excellent research, teaching and public engagement in the service of local, national and global communities.



## Generous endowment for research centre from Gama Foundation



Brent Manning (Trustee), Professor Grant Guilford (Vice-Chancellor), Grant and Marilyn Nelson

The Gama Foundation has given Victoria University’s Institute for Governance and Policy Studies (IGPS) a \$7 million boost to its work leading thinking and debate around issues at the heart of the democratic process.

The IGPS was established in 2012 through an earlier \$3 million endowment from the Gama Foundation, a charitable trust set up by Christchurch philanthropists Grant and Marilyn Nelson.

Vice-Chancellor Professor Grant Guilford says the Nelson’s donation is “extremely generous, thoughtful and far-seeing”.

**“This is a wonderful endorsement of the work the IGPS has done and can do in the future to lead thinking on important questions facing society. It will allow Victoria to deliver real benefit for New Zealand.”**

Based in the School of Government within Victoria Business School, the IGPS provides independent, research-led thought leadership that seeks to improve governance

management and decision making in the public sector. It also undertakes public policy research on important contemporary issues.

Michael Macaulay, the director of IGPS, says the additional endowment will support new research initiatives, new research staff and more PhD students.



# First-in-family scholarships change lives



Trustees’ scholars Vinny Carroll, Anna-Marie Southern, Trinity Thompson-Browne, Kasandra Hart-Kaumoana and Tamatha-Kaye Paul.

**The Victoria University Foundation Trustees’ Scholarship was established in 2012 to assist students who are first in their family to attend university. Chair of the Foundation, Craig Stevens, says the scholarship aligns closely with the University’s strategic goal of securing the intellectual potential put at risk through experience of disadvantage.**

“This is a very real way in which we can help increase enrolments of talented students currently denied access to university study by their social, cultural or financial circumstances or disabilities.”

The scholarship includes full tuition fees, a stipend, mentoring and work experience for three years. As well as being the first in the family to attend university, scholars must have achieved to a high

academic standard, show good character and leadership qualities, contributed to cultural and/or sporting activities and participated in community service.

**“We recognise the need to encourage the next generation to fulfil their potential and appreciate the value of providing a supportive environment where a student is mentored and equipped with life and work experience while studying,” says Mr Stevens.**

## Trustees’ scholar 2013–15

**The inaugural recipient of the Victoria University Foundation Trustees’ Scholarship, Vinny Carroll, has made it count.**

Embarking on a Master of Applied Statistics in 2016, he says he unintentionally found himself immersed in statistics in his second and third years, as part of his Bachelor of Science degree. “I took it as a useful subject that would help me later in my working life. But then I realised the versatility of statistics and found myself drifting further and further towards epidemiology and medical statistics as a career path.”

Vinny says receiving the Trustees’ Scholarship for the three years of his undergraduate degree was life changing. “It gave me the opportunity to attend university. It gave me a support system of people who had been in similar situations to me and who were willing to take the time to help me. It gave me financial security and meant that I could focus on achieving, rather than stressing about money.”

After Victoria, Vinny plans to travel in Asia and Europe for his OE and then has his sights set on returning to New Zealand to work in public health. “But this may change as opportunities arise, I don’t want to close any doors for myself before they have opened.”

## Trustees’ scholar 2015–17

**Trinity Thompson-Browne needs only one word to describe the Trustees’ Scholarship: freedom.**

“I never get over how huge an impact this scholarship has made and continues to make. While no amount of money solves life’s problems, this scholarship affords the rare luxury of alleviating the need to worry about financial burdens. That for me is what makes this scholarship so special—whomever it is gifted to is also gifted a degree of freedom most students never experience.”

Originally from Christchurch, Trinity’s family lived in Auckland for five years, so she considers both cities home. She says her motivation to apply for a scholarship was born from a mixture of hope and necessity.

Trinity has completed her first year of a Bachelor of Arts degree in Linguistics and Te Reo Māori, subjects she chose because of her passion for people, language and culture.

Despite some ups and downs, she says her first year was amazing. “I loved the experience of uni life and figuring out how this whole ‘adulting’ thing is done! Finishing off first year with an A– average was also a big highlight, and now that I know how much work it takes to get top marks, I’ve set my sights on making the Dean’s List this year.”

Her advice for the new Trustees’ Scholars is to find a mentor. “In every area of your life, be it personal, academic, financial, where you don’t feel confident enough to manage on your own, invite a mentor you respect to walk alongside you. That’s what’s helped propel me forward faster than I could have ever achieved alone.”

## Trustees’ scholars 2016–18

**Northland’s Anna-Marie Southern, Tokoroa’s Tamatha-Kaye Paul and Kasandra Hart-Kaumoana from Te Awamutu are the latest recipients of the Foundation Trustees’ Scholarships.**

Each will be supported for the next three years of their undergraduate studies by the University Foundation.

## Graduate Women Wellington First-in-Family Scholarship

Graduate Women Wellington has been a constant and instrumental supporter of female students at Victoria. The Graduate Women Wellington First-in-Family Scholarship, now entering its third year, is a growing programme that recognises the need to support and encourage the next generation of women to fulfil their potential.

Current recipients of the scholarship are Holly Siemonek and Widad Ballo. Both are studying towards a Bachelor of Arts.



Dr Judy Deuling, Professor Arthur Pomeroy and Dr Mark Masterson from the School of Art History, Classics and Religious Studies.

Enriching  
national culture,  
civil society  
and global  
citizenship

## Ancient collection adds wealth of knowledge

**A collection of more than 70 late-Roman antiquities will be a significant—and stunning—addition to Victoria University’s Classics Museum and to the knowledge base of future students.**

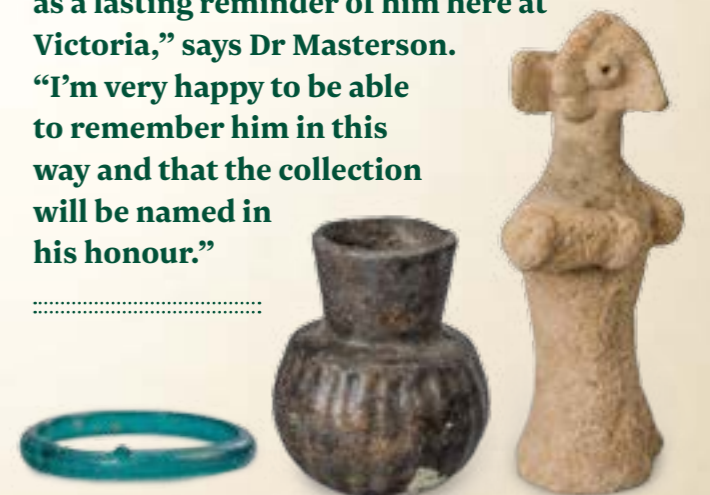
The pieces were gifted to the museum through the Victoria University Foundation by Jeremy Commons, whose late partner David Carson-Parker brought them to New Zealand from Syria in the 1970s.

Dr Mark Masterson from the School of Art History, Classics and Religious Studies says the collection dates from the middle-to-late Eastern Roman Empire and features a range of artefacts, including glassware and pottery. “The glass pieces are my favourites; some of them are quite dazzling. But the items of pottery are of particular note given David’s own artistry and talent for throwing pots.”

Mr Commons says that as a potter, David was interested in the work of all countries and periods, and it was an immediate and spontaneous feeling of affinity with Roman pottery that prompted him to collect it.

The process of cataloguing the collection, including photographing and writing descriptions for each of the pieces, is well underway and Dr Masterson says they should be on display from the second trimester of 2016. They will be housed in a purpose-built, earthquake-proof cabinet in the Classics Museum in Old Kirk building, which showcases a well-chosen collection of Greek and Roman artefacts.

**“As a friend, it’s touching that something that was so important to David can serve as a lasting reminder of him here at Victoria,” says Dr Masterson. “I’m very happy to be able to remember him in this way and that the collection will be named in his honour.”**



If you are interested in viewing the collection, email the classics administrator at [classics@vuw.ac.nz](mailto:classics@vuw.ac.nz) to arrange access to the museum.



## Earthquake Commission backs groundbreaking programme

**The Earthquake Commission's enduring commitment to research and education is behind a new programme that will enable the School of Geography, Environment and Earth Sciences (SGEES) to further strengthen its world-leading research and teaching in earthquake science.**

The Earthquake Commission (EQC) has been one of Victoria University's longest-standing funders with its comprehensive view of earthquake management and mitigation underpinning cross-disciplinary research and teaching. This support has included funding the EQC Fellowship in Seismic Studies since 1994, and more recently, the EQC Chair in the Economics of Disasters at the School of Government.

The SGEES head of school, Associate Professor John Townend, who was EQC Fellow from 2003 to 2015, will direct the new EQC Seismology and Fault Mechanics Programme. He says EQC's investment will allow Victoria to sustain and develop research and teaching capability in New Zealand that increases scientific understanding of the physical processes controlling earthquake occurrence. This will ultimately contribute to making communities more resilient to earthquake hazard.

"EQC's ongoing support demonstrates the value it places on scientific knowledge and capability-building, with which we can better understand the hazards posed by earthquakes and mitigate their effects.

"Victoria's nationally unique expertise in seismology and fault mechanics, our location in the capital city, and our vital relationship with GNS Science and other research organisations, make us an ideal partner for EQC," he says.

## Passion and pragmatism behind untied bequest

**A generous untied bequest from the late Chancellor and Emeritus Professor Tim Beaglehole is a reflection of his passion for Victoria as much as his pragmatism.**

His wife, Helen Beaglehole, says Tim's experience as an administrator at Victoria University meant he understood that any money could be far more usefully given if it wasn't tied to a specific cause and could be applied where most needed.

"Tim was passionate about the place and was delighted about the way it was developing. But he was well aware of the difficulties of financing such an institution and wanted the University to decide where the money could be best spent."

**Professor Beaglehole died in July 2015, leaving a profound legacy at Victoria that spanned many decades, as a member of a family with long and significant associations with the University, a student, a staff member, a respected historian, a senior academic leader, a member of the University Council and as Chancellor.**

He also played a pivotal role in establishing the renowned Victoria University art collection, helping grow a staff-funded arrangement into a major

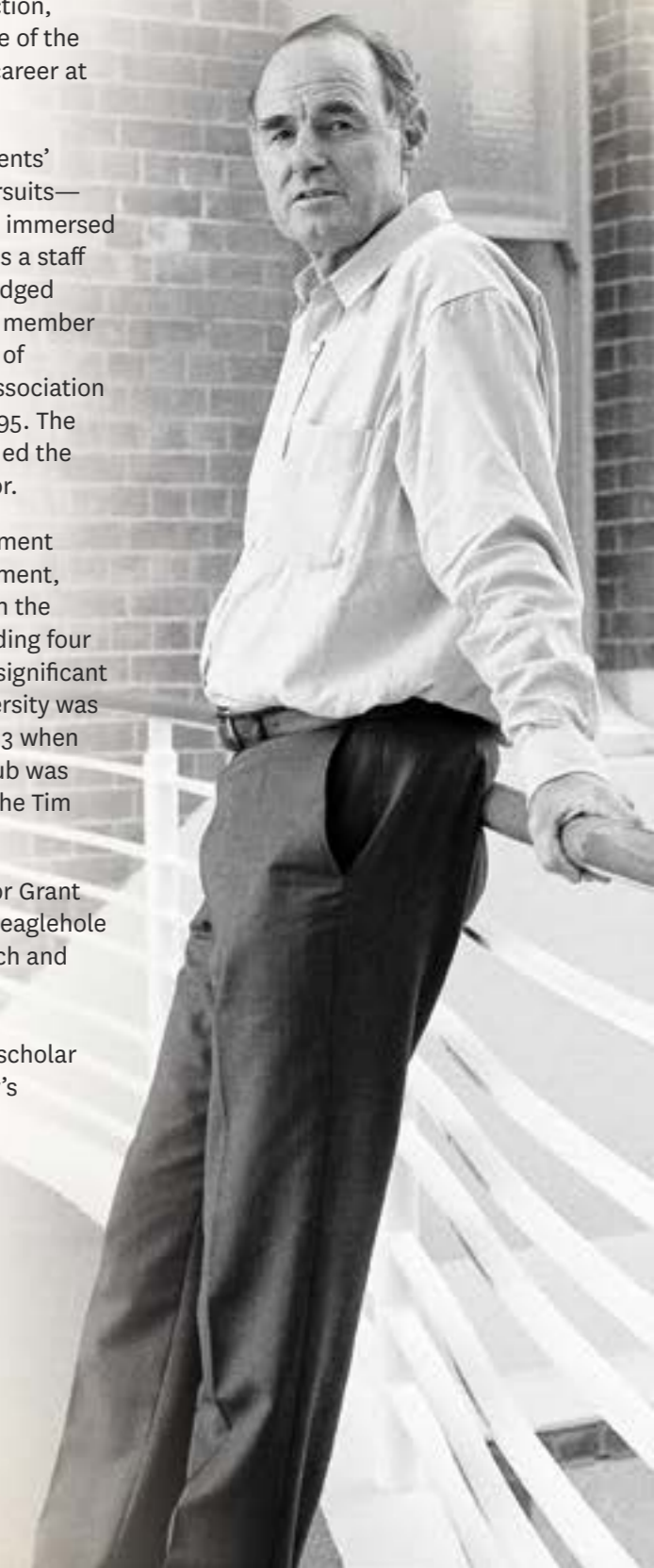
collection. His acquisition of *Gate III* by Colin McCahon, was, according to Professor Beaglehole, "the highpoint of my thirty years with the university collection, and indeed, probably one of the highpoints of my whole career at the university."

His keen support of students' cultural and sporting pursuits—both as a student deeply immersed in student politics, and as a staff member—was acknowledged when he was made a life member of the Victoria University of Wellington's Students' Association after his retirement in 1995. The same year, he was awarded the title of Emeritus Professor.

He continued his involvement with Victoria in his retirement, serving for many years on the University Council, including four years as Chancellor. His significant contribution to the University was further recognised in 2013 when the area adjoining the Hub was named in his honour as the Tim Beaglehole Courtyard.

Vice-Chancellor Professor Grant Guilford says Professor Beaglehole has left Victoria with a rich and lasting legacy.

"He was an outstanding scholar and one of the University's enduring supporters."





Professor Gavin Painter and Professor Richard Furneaux at the Ferrier Research Institute.

## Funding gives drug discovery chemistry real traction

**Trailblazing chemistry at Victoria's internationally renowned Ferrier Research Institute is helping transform the landscape for future drug treatment of serious illness, including Alzheimer's, cancer, and stroke. In 2015, the Development Office focused on developing philanthropic support for the Institute's work.**

Thanks to a range of donors, including the Genesis Oncology Trust, the Infinity Foundation and the Stewart Charitable Trust, the Ferrier Research Institute has been able to expand its research programmes being carried out with partners around the world.

One of those partnerships, with the Malaghan Institute of Medical Research, aims to improve outcomes for cancer patients. Professor Gavin Painter is leading the team spearheading the

chemistry behind immunotherapy technology. This potentially game-changing synthetic vaccine treatment activates a patient's own immune response to attack cancer cells. With the initial research focusing on melanoma and brain cancer, recent support from the Genesis Oncology Trust has expanded the programme to include breast cancer, and will enable human trials of an affordable, less toxic treatment.

Another important donation from the Infinity Foundation has enabled the Institute's Professor Gary Evans to expand his research team in its quest to redesign the chemical composition of drugs in the future. By looking at the structure of drugs, it is possible to make them more targeted and with far fewer side effects for patients.



## Law prize honours top New Zealand judge

**A prize in private law will serve as an enduring reminder of Sir Ivor Richardson's impact on New Zealand's legal landscape and his long association with Victoria University.**

Sir Ivor died in December 2014 and left a bequest to the University that has enabled the Faculty of Law to establish the I.L.M. Richardson Prize in Private Law. The prize recognises outstanding performance by a law student at Victoria University across contract, equity, property and tort law.

Pro Vice-Chancellor and Dean of Law Professor Mark Hickford says Sir Ivor's gift will help support some of New Zealand's best and brightest young law students in an area of the law in which Sir Ivor was renowned.

**Lady Richardson says she hoped the prize would open doors between the university and the business community. "Throughout my husband's association with Victoria University, he always encouraged greater interaction between academic lawyers and business. I hope this prize will support some promising students in that direction."**



Sir Ivor's longstanding relationship with the University started in 1967 when he joined the Faculty of Law as a professor. He went on to serve as dean between 1968 and 1971. After returning to private practice for a period, Sir Ivor was appointed to the High Court in 1977 and elevated to the Court of Appeal the same year. During his twenty-five years at the Court of Appeal, including seven as its president, he maintained his ties with Victoria as Pro-Chancellor from 1979 to 1984 and Chancellor from 1984 to 1986. On his judicial retirement in 2002, Sir Ivor was made a distinguished fellow of the Law Faculty.

Professor Mark Hickford says Sir Ivor's contribution to private law, both through his judicial decisions and wider influence, was enormous.

"Sir Ivor was a lawyer, judge, academic and teacher of the highest calibre. It is very special that his passion for legal education and for strengthening academic and business ties can be honoured through this prize."



## Individual sacrifice marked by epic symphony

A large cast of generous donors has enabled internationally acclaimed composer Professor John Psathas from Victoria's Te Kōkī New Zealand School of Music to create *No Man's Land*, an epic symphony of musical and cinematic commemoration.

Among them, alumnus Adrian Durham, a Bachelor of Music graduate and long-time supporter of Professor Psathas, gave a significant financial contribution to the project. Other funding came from the Lottery Grants Board, British High Commission, Embassy of the Republic of Poland, New Zealand France Friendship Fund, and the New Zealand India Research Institute. Support in kind also came from the New Zealand Defence Force and Park Road Post Production.

*No Man's Land* premiered at the New Zealand Festival in Wellington in March. Over the past year, Professor Psathas and his team visited battlegrounds and other important World War I sites, bringing together 150 musicians from more than 20 countries to record an original piece of music honouring the sacrifice of individuals from many of the nations affected by the Great War.

These musical collaborations were fused into an 80-minute film that was projected alongside an international group of musicians on stage, creating a live and virtual global orchestra.

Professor Psathas says that by respectfully acknowledging the suffering of so many, he wanted the project to be seen as an expression of hope, especially for countries currently in conflict, and of how music can bring people together.

“By celebrating positive human connections through music, *No Man's Land* is a deeply emotional response to war, then and now.”

Following performances in Wellington and at the Auckland Arts Festival, *No Man's Land* is being taken on a major-centre tour of New Zealand, including performances at WOMAD in Taranaki. There are also plans to bring the work to key festivals in other participating countries.





## Trust for young photographers enters new era

**The endowment of the Ronald Woolf Memorial Trust funds to the Victoria University Foundation will provide new opportunities for aspiring photographers, curators of photography and art historians.**

The Ronald Woolf Memorial Trust was set up in 1987 after a helicopter accident took the life of the celebrated photographer. Since then, the Trust has cultivated learning opportunities for young photographers through its annual scholarship and photographic exhibition.

Ronald's daughter Deborah Hart says her father had long envisioned establishing a trust dedicated to supporting young photographers. "The Trust is very important to the family. But it was becoming increasingly difficult to ensure the funds were going to the right people. We started to think maybe there's a better way to support young photographers and people with an interest in photography."

After extensive research, the Trust decided the Victoria University Foundation was ideally suited

to take over, "to take it to a different level, and do things that are in line with what my father wanted".

Pro Vice-Chancellor and Dean of the Faculty of Humanities and Social Sciences Professor Jennifer Windsor says the University is uniquely positioned to realise the potential of the Trust. "We are well placed to foster their understanding of photography and its evolution through time, and to mentor the next generation of photographic historians, curators and students of photography."

Possible initiatives include the development of an Honours- or Master's-level photographic history course, enabling students to attend conferences, prepare for exhibitions or commission a photographic project.

The Foundation will invest the endowment in perpetuity and the Adam Art Gallery will jointly administer the funds with Victoria's art history department. The Foundation hopes to grow the endowment fund. If you would like to find out more, contact our Development Office.

Three generations of Ronald Woolf's family celebrate the new era of the Memorial Trust. From left: Megan Hall, Simon Woolf, Inge Woolf (seated), Sam Hart, Deborah Hart, Noah Woolf and Lily-Jane Woolf (front)

## Visiting Chair sheds light on global "footnote"

**Professor Thitinan Pongsudhirak, the 2015 Sir Howard Kippenberger Visiting Chair in Strategic Studies, has much to say on what New Zealand is doing right—and wrong—as an Asia-Pacific nation.**

The internationally regarded analyst and commentator from Bangkok's Chulalongkorn University spent eight weeks in New Zealand during his tenure with the Centre for Strategic Studies. While here, he gave public talks and led roundtable discussions throughout New Zealand, including with government agencies, the New Zealand Defence Force, the New Zealand Institute of International Affairs and the Asia New Zealand Foundation. He also published a series of articles in Asian media dealing with regional security issues and New Zealand's role in them.

In his public lecture at Victoria in August, *Global Disorder and Asia-Pacific Consequences: A Southeast Asia View*, Dr Pongsudhirak said there had been an unravelling of global order since World War II and the power structure had changed.



"Countries that were nowhere to be seen in 1945—China, India, Indonesia—are now triumphing." He acknowledged New Zealand's geographical position as "a footnote to the world map" but urged New Zealand not to distance itself from global happenings, no matter how changeable they are. Dr Pongsudhirak said New Zealand's Asia-Pacific political strategy is trade and prosperity focused. He warned we need to consider longer-term geopolitical dynamics and have a more comprehensive approach that is responsive to the disordered and highly changeable global system.

"Overall, New Zealand's doing very well, but you need to be disciplined to keep it up. You need to be vigilant for your economic and fiscal immunity. You need to stay tuned in to what's happening in the world."

**The Sir Howard Kippenberger Chair was established in 2006, in honour of Major-General Sir Howard Kippenberger KBE CB DSO ED, one of New Zealand's most distinguished soldiers, an eminent scholar and strategist. The Chair was established with funding from the Garfield Weston Foundation in Britain, the New Zealand Defence Force and the Royal New Zealand Returned and Services' Association (Incorporated) through the Victoria University Foundation and coordinated by the Centre for Strategic Studies.**



# Our year in pictures

1. Victoria Legacy Club event in the Adam Art Gallery: Charlotte Beaglehole.
2. Ronald Woolf Memorial Trust celebration: Craig Stevens and Inge Woolf.
3. Victoria Legacy Club event: Professor Frazer Allan, John Greenwood and Malcolm McCaw.
4. Hunter Club in the J.C. Beaglehole Room: Kathryn Whittfield and Philippa Ward examine the recently acquired illustrated art volume *Recueil Crozat*, published in Paris in the eighteenth century.
5. Hunter Club in the Adam Art Gallery: Gordon Brown OBE and Bill Alington at the exhibition of *The Private World of Gordon H. Brown: Art Historian, Artist, Collector*, featuring works gifted to the University in 2010.
6. Reserve Bank of New Zealand lecture: Professor Bob Buckle, Professor Stephen Haber, 2015 Reserve Bank Professorial Fellow in Monetary and Financial Economics and Dr John McDermott, Assistant Governor and Head of Economics at the Reserve Bank.
7. Adam Prize in Creative Writing: 2015 recipient Nick Bollinger with Verna and Denis Adam.
8. Distinguished Alumni Awards dinner: Trustees' scholars Vinny Carroll and Trinity Thompson-Browne.
9. Brad McGann and David Carson-Parker Awards: Ken Duncum, Trevor Haysom, Ali Burns (winner of the Brad McGann Film Writing Award), David Brechin-Smith (winner of the David Carson-Parker Embassy Prize in Scriptwriting), Jonathon Hendry and Jeremy Commons.



1



2



5



6



3



7



8



4



9

# Victoria Benefactors’ Circle

The Victoria Benefactors’ Circle was established in 2012 to acknowledge Victoria University’s most significant donors and sponsors.

|  |   |  |
|--|---|--|
| <b>Individuals</b>                                       | Dr David Evison                                       | Viggo Mortensen                          |
| Dr Ngaire Adcock*  | Margaret Evison                                       | Naomi Morton*                            |
| Craig Andrews*   | Rosemary Evison                                       | Peter Morton*                            |
| Gwendoline Angelo*                                       | Lindsay Fergusson                                     | David Newman*                            |
| Professor Tony Angelo, ONZM                              | Greta Fernie  | Margaret Nielsen, ONZM                   |
| Miles Armstrong  | Hon. Christopher Finlayson, MP                        | James Ogden, Hunter Fellow               |
| Emeritus Professor Neil Ashcroft dsc and Judith Ashcroft | Robert Fisher   | Elizabeth Orr, CNZM, LITD                |
| Dr John Bailey*  | Clare Galambos-Winter, Hunter Fellow*                 | Emeritus Professor Gordon Orr*           |
| Paul Baines, DCom, Hunter Fellow                         | Emeritus Professor Sir Lloyd Geering, ONZ, CBE        | Sebastian Page*                          |
| Anne Ballinger   | Dame Jennifer Gibbs, DNZM                             | Donald Park                              |
| Thomas Ballinger*  | Alan Gibbs  | Lynda Park                               |
| Emeritus Professor Peter Barrett                         | Emeritus Professor Maurice Goldsmith*                 | Gary Plowman, QC                         |
| Ian Baumgart, QSO*                                       | Gerard Gordon, Hunter Fellow*                         | Christopher Pottinger*                   |
| Emeritus Professor Tim Beaglehole, ADS*                  | Emeritus Professor Ian Gordon, LITD*                  | Dr Petpiboon Prasit                      |
| John Beaglehole  | Peter Graham  | Professor John Prebble                   |
| Dr Marie Bell, CNZM*                                     | Neil Gray   | Peter Preston-Thomas*                    |
| Lex Benson-Cooper  | Phillip Green   | Susan Price                              |
| Peter Biggs, CNZM and Mary Biggs                         | Brian Hansen  | Bernard Randall                          |
| Tan Sri Datuk Halim Bin Saad, ADS, DCOM                  | Rt Hon. Sir Michael Hardie Boys, GNZM, GCMG, QSO, LLD | Dame Patsy Reddy, DNZM                   |
| Barbara Blake  | Deborah Hart  | Professor Jack Richards, DLITT           |
| Judge Ian Borrin, Hunter Fellow*                         | Vivien Hirschfeld                                     | Rt Hon. Sir Ivor Richardson, PCNZM, LLD* |
| Ian Boyd, ONZM, ADS                                      | Professor Peter Hogg, QC, OC                          | Yvonne Riddiford                         |
| Karis Boyd*  | Dr Patricia Holborow*                                 | Glenn Schaeffer, LITD                    |
| Daniel Bradshaw  | Ross Holmes   | Richard Scobie                           |
| Malcolm Brow   | Emeritus Professor Sir Frank Holmes, DCOM*            | Professor Shayle Searle*                 |
| Professor Bob Buckle, ONZM                               | Paul Holmes   | Dr Mansoor Shafi, MNZM                   |
| Richard Carlyon  | Professor Emerita Janet Holmes, ONZM                  | Yoko Shafi                               |
| Colin Carruthers, QC                                     | Jessica Holmes  | John Shewan, CNZM, DAA, Hunter Fellow    |
| Danny Chan   | Kok Kooi How Hou                                      | William Shields*                         |
| Joyce Chan*  | Peter Hughes, CNZM                                    | Richard Simpson, CBE, LLD*               |
| Keith D. Chan  | Margot Hutchison                                      | Malcolm Small                            |
| Laywood Chan   | Jack Ilott, ADS*                                      | Professor Tony Smith                     |
| Selwyn D. Chan   | Hon. Sir John Jeffries                                | Professor John Spencer                   |
| Yvonne Chan  | Bryan Johnson, ONZM                                   | Professor David Stevenson, DSC           |
| Emeritus Professor Dame Margaret Clark, DNZM, CMG        | Sir Robert Jones                                      | Dr Paulina Suarez-Aspilla                |
| Professor Peter Coleman*                                 | Brenda Joyce  | Swafford Family                          |
| Jeremy Commons   | Tony Kerridge   | Emeritus Professor Ian Swingland, OBE    |
| Dr Robin Congreve, DAA                                   | Dr Seng Tee Lee, DLITT                                | Denis Thom                               |
| Eleanor Congreve   | Dr Chan-Hoong Leong                                   | Wade Thompson, DCom*                     |
| Mark (Charlie) Cook                                      | Margaret Lewisohn                                     | Andrew Thomson, Hunter Fellow            |
| Rt Hon. Sir Robin Cooke, Lord Cooke of Thorndon, LLD *   | Ian Longstaff*  | Sir John Todd, KNZM*                     |
| Brian Cunningham*  | Malcolm McCaw, LLD                                    | Margaret, Lady Trotter                   |
| Deborah Cutfield   | Dr Gerard McCoy, QC                                   | Sir Ronald Trotter, LLD*                 |
| John Daish   | Hon. Justice Sir John McGrath, KNZM, QC, LLD          | Virginia Turner*                         |
| Bob Davies   | Mary McHardy*   | Professor Stephen Turnovsky, DLITT       |
| Dr Edwin Davies*   | Sir Roy McKenzie, ONZ, KBE, DCom, ADS*                | John Upton, QC                           |
| Dr Robert Davies   | John McKinnon, QSO                                    | Emeritus Professor Pat Walsh, CNZM       |
| David Day  | Erica McLean  | Emeritus Professor Ray Watters           |
| Dr Warren Dickinson                                      | John McLean, Hunter Fellow                            | Erik and Trudy Westergaard               |
| Carolyn Diessl   | Professor Ken McNatty                                 | Mary Weston                              |
| John Drake*  | Joy McNicoll  | Hon. Justice Douglas White, QC           |
| Mark Dunajtschik   | Bob and Timi Morey                                    | Pat Whitwell*                            |
| Adrian Durham  | Dr Gareth Morgan, DAA                                 | Po Wong                                  |
| Alan Eggers  | Rob Morrison  | Simon Woolf                              |
|  |   | Inge Woolf, QSO                          |

**Organisations**  
Accident Compensation Corporation  
Adam Foundation  
Antarctica New Zealand  
ANZ Bank New Zealand Ltd  
Asia New Zealand Foundation  
Bank of New Zealand  
Bell Gully  
BP Oil New Zealand Ltd  
Brierley Investments  
British High Commission  
Buddle Findlay  
Building Research Association of New Zealand  
Callaghan Innovation Research Ltd  
Cameron Family Trust  
Cement & Concrete Association of New Zealand  
Chapman Tripp  
Chartwell Trust  
Cisco NZ Ltd  
Contact Energy Ltd  
Creative New Zealand  
Datacom Group Ltd  
Deane Endowment Trust  
Department of Internal Affairs  
The Dominion Post  
Economic Development Group  
Ericsson New Zealand  
Ernslaw One Ltd  
Gama Foundation  
Garfield Weston Foundation  
Girls’ Friendly Society  
Grace Memorial Trust  
Graduate Women Wellington  
Grow Wellington  
Health and Disability Intelligence  
Holden Harper  
Holdsworth Charitable Trust  
IBM New Zealand Ltd  
Inland Revenue Department  
International Rhino Foundation  
InternetNZ  
Izard Weston  
J.R. McKenzie Trust—Deaf Development Fund  
Jack Jeffs Charitable Trust  
Jack Shallcrass Educational Trust  
Jade Software Company  
Jordan Foundation  
Les and Sonia Andrews’ Cultural Foundation  
Lion Foundation  
Government of the Federation of Malaysia  
Meridian Energy Ltd  
Michael Hirschfeld Children’s Trust  
Microsoft New Zealand  
Ministry for Primary Industries  
Ministry of Defence  
Ministry of Foreign Affairs and Trade  
Ministry of Justice

Ministry of Social Development  
Mitsubishi Motors NZ Ltd  
New Zealand Community Trust  
New Zealand Defence Force  
New Zealand Earthquake Commission  
New Zealand Institute of Architects  
New Zealand Institute of Management  
New Zealand Law Foundation  
New Zealand Lottery Grants Board  
New Zealand Post Ltd  
New Zealand Trade and Enterprise  
New Zealand Treasury  
Ngā Tāngata Tiaki o Whanganui  
Powerco Ltd  
PricewaterhouseCoopers  
Rotary Club of Wellington  
Te Rūnanga o Ngāi Tahu  
Saad Foundation  
Sound Investments International  
South Pacific Pictures  
Spark New Zealand Ltd  
St John’s in the City  
Stewart Charitable Trust  
Stout Trust  
Sutherland Self Help Trust  
Thompson Family Foundation, Inc.  
Todd Foundation  
Tower Corporation Holdings Ltd  
Transpower New Zealand Ltd  
Trinity Newman Foundation  
Turnovsky Endowment Trust  
U.S. Fish and Wildlife Service  
Vector Ltd  
Victoria Link Ltd  
Vocus Communications  
W.H. (Bill) Vaughan Trust  
Warren Architects’ Education Charitable Trust  
Wellington City Council  
Wellington College Old Boys and Victoria University of Wellington Rugby Football Club (OBU)  
Wellington Community Trust  
Wellington Masonic Youth Trust  
Westpac New Zealand  
Wigram Foundation  
Wingnut Films Ltd  
Zoological Society of San Diego

*\* Deceased  
ADS—Award for Distinguished Service  
DAA—Distinguished Alumni Award winner  
Only Victoria honorary degrees are cited.*

**Victoria Benefactors’ Circle members have given private donations of \$10,000 or more, or organisational sponsorship of \$50,000 or more. For more information on becoming a member, contact Michele Downer at [michele.downer@vuw.ac.nz](mailto:michele.downer@vuw.ac.nz) or +64-4-463 5871.**

# Victoria Legacy Club

The annual reception for members of the Victoria Legacy Club was held in October in the Adam Art Gallery, with Chancellor Sir Neville Jordan, Vice-Chancellor Grant Guilford and Foundation Chair Craig Stevens joining members, their families and friends.

This year’s event showcased the internationally acclaimed guitar programme offered at Victoria’s Te Kōkī New Zealand School of Music. Director Euan Murdoch talked about having that afternoon installed a gallery of photographic works by the late Associate Professor Jack Body—a much loved colleague and highly respected composer. He also shared his enormous pride for his colleagues and students.

Taking advantage of the wonderful acoustics of the gallery, guests were entertained by the extremely talented Duo Kita, guitar students George Wills and Jake Church, and were held spellbound during the expressive passages of pianissimo.

The annual reception for Legacy Club members is Victoria’s opportunity to acknowledge and thank members who have generously notified us of their intention to leave a bequest to Victoria in their will. It is also a time to recognise and reflect on the many contributions made

by members of the Legacy Club who have recently passed away.

Legacy members enjoyed the opportunity to wander around the Adam Art Gallery and catch up with friends. Craig Stevens closed the event by thanking members for their support, noting that making a bequest is a valuable and much appreciated way to play a role in Victoria’s future.



Guitar students George Wills and Jake Church.

### Members

- Bill Alington
- Graham and Mary Ansell
- Dr Margaret Bailey
- Emeritus Professor Peter Barrett
- Emeritus Professor Tim Beaglehole, ADS\*
- Phillip Beavon and Suzanne Wood
- Judge Ian Borrin, Hunter Fellow\*
- John Bowers
- Ian Boyd, ONZM, ADS
- Gordon Brown, OBE, LITD
- Professor Bob Buckle, ONZM
- Shane Caley
- Dr Joan Cameron\*
- Yvonne Chan
- Professor Roger Clark
- Jeremy Commons, DLITT
- Dr Gerard Curry
- Dr Ray Dibble
- Fiona Eason
- Dr Robin and Feriel Falconer
- Prue Flacks
- Rosalene Fogel
- John Greenwood, Hunter Fellow
- Sahra Grinham and Dennis Chippindale
- Dr Roger Hall, CNZM, QSO, HON LITD
- Léone Harkness, Hunter Fellow
- Professor Ross Harvey and Rachel Salmond
- Graham Hill
- Emeritus Professor Les Holborow, QSO, LLD
- Emeritus Professor Roger Hopkins
- Dr Sheena Hudson
- John Hunter
- Professor Jim Johnston, FRSNZ , FNZIC
- Michael and Margaret Kelly
- Dr Allison Kirkman
- David Lascelles
- Doris and Peter Macdonald
- Elizabeth Madle
- Emeritus Professor Athol Mann, CMG
- Dr Angela Martin
- Malcolm McCaw, LLD
- Dr Geraldine McDonald, CNZM, LITD
- Juliet McKee, QSO
- Joy McNicoll
- Dr Anne Meade, CNZM, DAA
- Diana Meads
- Iris Mee
- Barbara\* and Jim Milburn
- Valerie Moreland
- Sharon Murphy
- Emeritus Professor Gordon\* and Elizabeth Orr, CNZM, LITD
- Sebastian Page\*
- Kristelle Plimmer
- Dr Nancy Pollock
- Vaughan and Gillian Preece

- Beverley Price, MNZM
- Susan Price
- Dame Alison Quentin-Baxter, DNZM, QSO, LLD
- Lady Beverley Reeves (Sir Paul and Lady Reeves Bequest)
- Yvonne Riddiford
- Dr Roger Ridley-Smith
- Emeritus Professor Roger Robinson
- Rodney Ruddick
- Dr Glenn Swafford
- Monica Taylor
- Robyn Thomson and Bruce Rogers
- Tricia Walbridge
- Emeritus Professor Pat Walsh, CNZM
- Lance Weller
- Alastair Whitelaw\*
- Dr Kit Withers

\* Deceased 2015/16  
ADS—Award for Distinguished Service  
DAA—Distinguished Alumni Award winner  
Only Victoria honorary degrees are cited.



Professor Grant Guilford welcoming guests at The Royal Society in London, September 2015.

# U.K. and U.S. Friends

## U.K. Friends

The trustees of the U.K. Friends of Victoria University of Wellington perform a crucial role in overseeing the receipt of donations from taxpayers in the United Kingdom and ensuring that they are directed to projects at Victoria University, as designated by the donors.

### Trustees

Pinar Bagci  
Victoria Healy  
James McArthur  
Shelagh Murray  
Karyn Newman  
Audley Sheppard, QC

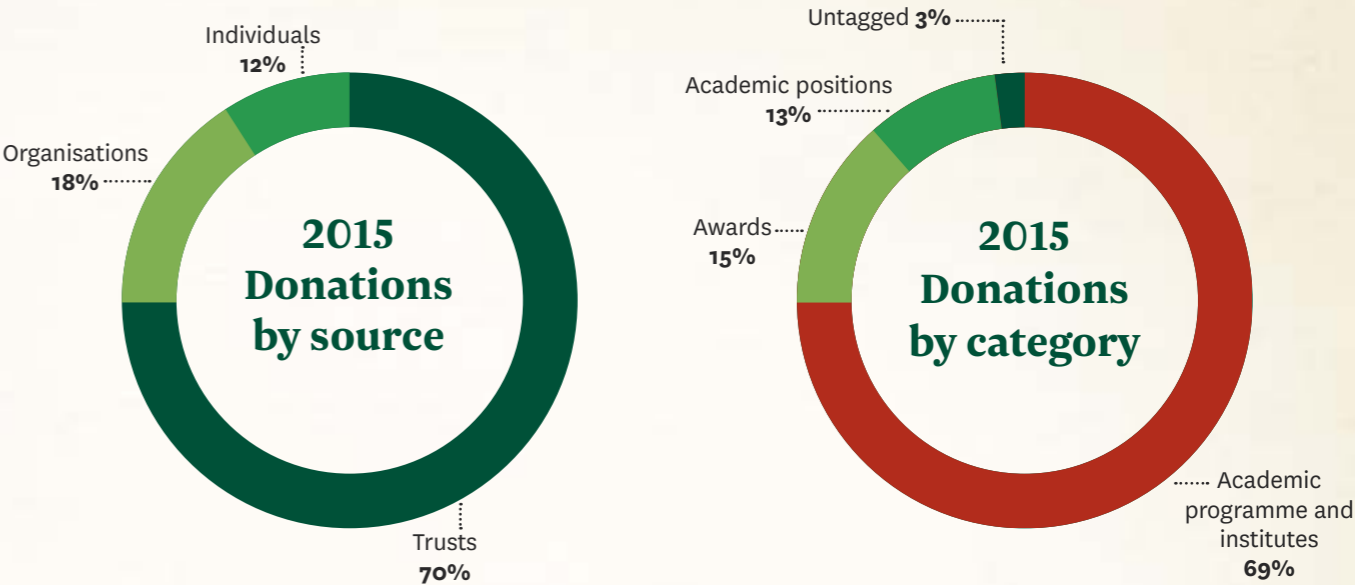
## U.S. Friends

The U.S. Friends of Victoria University of Wellington is an independent American non-profit organisation set up to receive donations from taxpayers in the United States to support the work of the University. The board of directors of the U.S. Friends performs a crucial role in overseeing the raising of funds from American-based alumni and other supporters.

### Trustees

Yvonne Chan (*President*)  
James Genever (*Treasurer*)  
Alexander Blades  
Peter Bryant  
Professor Roger Clark  
Gerald Hensley  
Fleur Knowsley  
Erica McLean

# Donations received



# Donors

Victoria University of Wellington Foundation thanks the following people and organisations for their support in 2015.

## Individual donors

Judge Anthony Adeane  
Professor Frazer Allan  
Beverley Andrews  
Dr Ben Ang  
Ian Armitage  
Erika Arthur  
Emeritus Professor Neil Ashcroft, DSc  
Dr Christopher Atkin  
Dr Robin Averill  
Jeffrey Azzato  
Dale Bailey  
Paul and Sheryl Baines  
Anne Ballinger  
Elizabeth Ballinger  
Dr Donald Barnes  
Michael Bartlett  
Deborah and Derek Battell  
Paula Bayliss  
Stuart Baynes  
Emeritus Professor Tim Beaglehole, ADS\*  
Elizabeth Beall  
Suzanne Bellamy  
Wayne Benton  
Rob Bialostocki  
Geoffrey and Karen Biggs  
Thora Blithe  
Associate Professor Jack Body\*  
Dr Carol Bohmer  
Dr Elaine Bolitho

Judge Ian Borrin\*  
Judge Peter and Sheryl Boshier  
Ian Boyd, ONZM  
Jillian Bray  
Craig Bristol  
Judge Tom Broadmore  
James and Helena Brow  
Angela Brown  
Gordon Brown, OBE, LITD  
Rachel Brown  
Ann Buckingham  
David and Winifred Bull  
Matthew Bunting  
Harriet Bush  
Dr Sasha Calhoun  
Judge John Callander, QSO  
Gordon Cameron  
Dr Joan Cameron\*  
Edith Campbell  
Jenny Campbell  
Michael and Jennifer Campbell  
Grant Caradus  
Alastair Carruthers, CNZM  
Francis Catley  
Yvonne Chan  
Keith D. Chan  
Laywood Chan  
Selwyn D. Chan  
Suresh Chandra  
Chris and Hilary Chapman

Dr Lim Keak Cheng  
Philip Cheung  
Enrico Chiessi  
Lorraine and Rick Christie  
James Chua  
Timothy Clarke  
Hon. Justice Denis Clifford  
Paul and Cherie Coleman  
Janis Colosimo  
Jeremy Commons, DLitt  
Annette, Lady Cooke of Thorndon  
Francis Cooke, QC  
Maureen Cooper  
Dr Jim Cousins  
Lucien Cronin  
Deborah Cutfield  
Kevin Daly  
Sharmala David  
Robert Davies  
Michael Davis  
David Day  
Rosemary Diehl  
Victor Diem  
Emily Dobson  
Brian Donohue  
Peter Donovan  
Peter Du Chateau  
Desmond Dunbar  
Adrian Durham  
Hon. Harry Duynhoven, QSO, JP

Dorothy Dyett  
Elizabeth Earnshaw  
Ria Earp  
John Edmonson  
Dr Anne Else, ONZM  
Asher Emanuel  
Garth England  
Derek Fah Lim  
Bill Falconer, CNZM  
Michael Fathers  
Larry Fergusson  
Dr Paul Fitzgerald  
Gerald Fox  
Kim Francis  
Tim Francis\*  
Hon. Marion Frater  
Judith Fyfe, ONZM  
Steven Fyfe  
Russell Garrett  
James Genever  
Jennifer Gerrie  
Dame Jennifer Gibbs, DNZM  
Gary Girvan  
Wyndham Goodwin\*  
Tania Gornik  
Peter Graham  
Marian Grant  
Professor David Grattan  
Emeritus Professor Bob Gregory  
Laurence Greig  
Kristina Griffin  
Dr William Hackett  
Allan Hall  
Dr Roger Hall, CNZM, QSO, HON LITD  
Suzanne Hall  
Dean Hamilton  
Joanne Hansen  
Erina Harding  
Emeritus Professor John Harper, FRSNZ  
Ross Harris, QSM  
Deborah Hart  
Sarah Harvey  
Francis Healy  
Dr Jacqueline Hemmingson  
Dr Barbara Hercus  
Herrick Family  
Dr Raymond Hoare  
Jack Hodder  
Professor Peter Hogg, OC, QC, LLD  
Emeritus Professor Leslie Holborow, QSO, LLD  
Fay Holdom  
Milton Holland, QSM  
Professor Emerita Janet Holmes, ONZM  
Chris Horne  
Dr Alan Hull  
Patrick Hume  
Donald Huse  
Marian Hutchinson  
David Iles

Justin Irving  
Murray Jackson  
Aiphong Jayanama  
Peter Jenkins  
Janet Johnson  
Courtney Johnston  
Ross and Ginette Johnston  
Sylvia Johnston  
Dr Keleigh Jones  
Dikran Karagueuzian  
Emeritus Professor Graeme Kennedy and Dr Winifred Kennedy  
Katharine Kerr  
Dr Murray King  
Dr Wattana Klinchoo  
David Knott  
Fleur Knowsley  
Professor Barry Kohn  
Michael Kozyniak  
Erika Kremic\*  
Brian Kwang  
Dr Philip Laird  
Ben Langdon  
Jan Larres  
Nicola Larsen  
Jacqueline Latimer  
Richard Latimer  
Hon. John Laurenson, CNZM, QC  
James Law, MNZM  
Wee Lee  
Jennifer Lendrum  
Dr Susan Lennox  
Dr Chan-Hoong Leong  
Abby Letteri  
Gwen Levick  
Margaret Lewisohn  
Oscar Lewisohn  
Leo and Robyn Lonergan  
Matthew Louwrens  
Graeme Lythgoe  
Peter MacCallum  
Chris and Kathryn MacKay  
Emeritus Professor David MacKay  
Graham Malaghan, ONZM  
Elizabeth Mallinson, QSM  
Patrick Maloney  
Anne Manchester  
Emeritus Professor Bill Manhire, CNZM  
Alastair Mansell  
Alan Marshall  
Professor Matthew Marshall  
John Martin, QSO and Mary Jennings  
Dr Donald Mathieson, ONZM, QC  
John McCaffrey  
Bob McCaw  
Valerie McCay  
Velma McClellan  
Frances McGrath  
Keith McGregor  
Dr James McIntosh

Peter McKenzie, QC and Jocelyn McKenzie  
Thomas McKenzie  
Ann and Fergus McLean  
Anne McLean  
Joy McNicoll  
Athol McQueen, QSM  
Sharon Meachen-Asinelli  
Dr Elizabeth Meade, CNZM, DAA  
Diana Meads  
Joy Mebus  
Dame Joan Metge, DBE  
Emeritus Professor Ronald Milburn  
Professor John Miller  
Barbara Mitcalfe  
David Moloney, OBE  
Beverley Morris, CNZM  
Mary Mountier  
Andi Muhtar  
See Ng  
John Niland  
Patricia Noble-Beasley  
Scott Norton  
Jim and Helen O'Donovan  
Lloyd and Susan Olivecrona  
Rodney Orange  
Peter Orman  
Elizabeth Orr, CNZM, LITD  
Emeritus Professor Gordon Orr\*  
Pamela and David Oughton, QSO  
Mayie Pagalilauan  
Rt Hon. Sir Geoffrey Palmer  
Kate Parsonson  
Jon Peacock  
Carey Pearce  
John Perham  
Stephen Perrott  
Dr Vladimir Pestov  
Dr William Porteous  
Professor Harry Powell  
Andrew Powell  
Professor John Prebble  
David Price  
Gordon and Robin Prowse  
Charles Rampton  
Thomas Reiher  
Dr Michael Reilly  
Susan Rhind\*  
Keith Riach  
Rt Hon. Sir Ivor Richardson, PCNZM, LLD\*  
Rosamond Robertshawe  
Emeritus Professor Roger Robinson  
Anita Rose  
Philip Ross  
David Roughan  
Stephan Rupp and Kim Rupp-Gregory  
Wendy Russell  
David Ryan  
Marama Salsano  
Agnes Sang  
Roy Savage

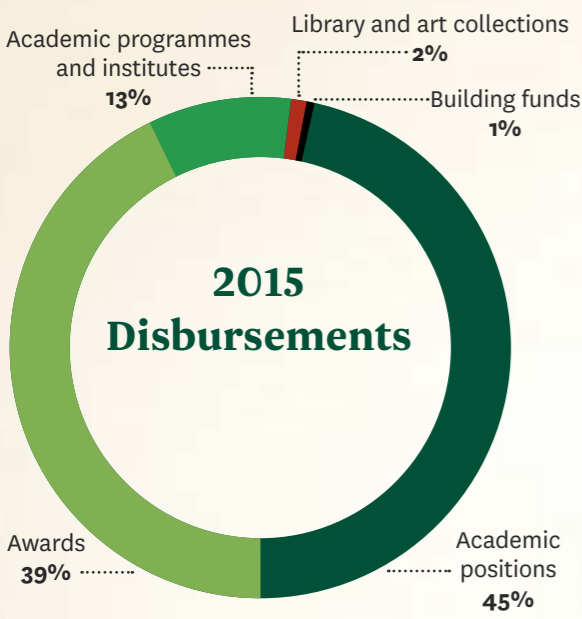
Grant Schaumburg, Jr  
Lt Col. Neal Schofield  
Malcolm Schwartzfeger  
Mary Scott  
Sharon Scott  
Pearl Sidwell  
Peter Sime  
Owen Sinclair  
Robert Slade  
John Sleeman  
Mel Smith, CNZM and Prudence Oxley  
Philip Smith  
Martin and Bridget Smith  
Erin Sneddon  
Susan Sonntag  
Rajat Sood  
Dr Dereck Souter  
Professor John Spencer  
Professor Bruce Stening  
Meredith Stephens  
Helen Stevens  
Professor David Stevenson  
Keith Stewart  
Ian Stockwell  
Bruce Stowell  
Dr Deryn Strange  
Swafford Family  
Kritsana Tanpradit  
John Taylor, MNZM  
Monica Taylor\*  
Mary Thompson  
Jeffrey Todd, CBE  
Jennifer Todd  
Katrina Todd  
Michael Todd  
Michael Tomlinson  
Dr Claire Toynbee  
Samantha Turner  
Kerrin Vautier, CMG  
Edward Verrity  
Hilton Verry  
Professor Graeme Wake  
Tricia Walbridge  
Emeritus Professor Darcy Walker  
Holly Walker  
Dr Susanne Walker\*  
Mark Webster  
Emeritus Professor Albert Wendt, ONZ, CNZM  
Sir Maarten Wevers, KNZM and Louise Rolleston, Lady Wevers  
Nigel White  
Professor Damien Wilkins  
Antony Wilkinson  
Joanne Williment  
Angela Willy  
Garry Wilson  
Magnolia Wilson  
Adrian Wimmers  
David Wimms  
Professor Jennifer Windsor

Ching Man Wu  
Ross Wylie  
Dawn Yeabsley  
Reverend Robert Yule  
Dr Mary Zajkowski  
Denise Zhang  
  
**Organisations**  
Accident Compensation Corporation  
Adam Foundation  
Bank of New Zealand  
BDO Wellington  
British High Commission  
Callaghan Innovation Research Ltd  
Cement & Concrete Association of New Zealand  
Chartered Accountants Australia and New Zealand  
Chartwell Trust  
Cigna Life Insurance NZ Ltd  
CPA Australia Ltd  
Creative New Zealand  
Cullen The Employment Law Firm  
Datacom Group Limited  
Deane Endowment Trust  
Department of Internal Affairs  
Embassy of Israel  
Embassy of Spain  
Embassy of the Republic of Indonesia  
English-Speaking Union  
Entertainment Publications  
Expressions Piano Trust  
Field Court Chambers  
Gama Foundation  
Girls' Friendly Society  
Goethe Institute  
The Grace Memorial Trust  
Graduate Women Wellington  
Greater Wellington Regional Council  
Guardian Trust  
Heritage New Zealand Pouhere Taonga  
High Commission for Niue  
Holdsworth Charitable Trust  
Humanist Society of New Zealand  
Infinity Foundation Limited  
Information Systems Audit and Control Association  
Inland Revenue Department  
J.R. McKenzie Trust  
J.R. McKenzie Trust — Deaf Development Fund  
Jack Jeffs Charitable Trust  
KPMG New Zealand  
Mercatus Center  
Ministry for Primary Industries  
Ministry of Education  
Ministry of Social Development  
Music Futures  
Music Therapy New Zealand  
New Zealand Architects Co-Operative Society Ltd (NZACS)

New Zealand Defence Force  
New Zealand Earthquake Commission  
New Zealand Film Commission  
New Zealand France Friendship Fund  
New Zealand Indonesian Association  
New Zealand Institute of Architects  
New Zealand Opera Society Inc.  
New Zealand Police  
New Zealand Productivity Commission  
New Zealand Symphony Orchestra Ltd  
New Zealand Trade and Enterprise  
The Treasury  
Ngā Tāngata Tiaki o Whanganui  
Norman Kirk Memorial Trust  
Ogilvy & Mather New Zealand  
Pacific Leinster Lodge No. 2  
Prendos New Zealand Ltd  
PricewaterhouseCoopers  
Public Trust  
Reserve Bank of New Zealand  
Rotary Club of Wellington  
Royal Forest and Bird Protection Society of New Zealand  
Sanitarium Health and Wellbeing  
State Services Commission  
Stephenson & Turner NZ Ltd  
Stewart Charitable Trust  
Story Inc.  
Te Papa Tongarewa Museum of New Zealand  
The Tindall Foundation  
Transpower New Zealand Ltd  
Trinity College London  
Tumbleweed Tees  
Turnovsky Endowment Trust  
University of Canterbury  
Warren Architects' Education Charitable Trust  
Wellington Masonic Youth Trust  
Weta Digital Ltd  
Wigram Foundation  
YourCause

*\* Deceased*  
*ADS—Award for Distinguished Service*  
*DAA—Distinguished Alumni Award winner*  
*Only Victoria honorary degrees are cited.*  
*Donors listed are those who made donations of \$50 or more in 2015.*

# Disbursements



**\$100,000 and over**

- Alumni Appeal Student Scholarships
- Bank of New Zealand Chair in Business in Asia
- Chair in Digital Government
- Chair in Economics of Disasters
- Chair in Public Finance
- Diana Unwin Chair in Restorative Justice
- Production and presentation of *No Man’s Land*

**\$25,000–\$99,999**

- Angelo South Pacific Postgraduate Educational Scholarship
- Barbara Finlayson Music Scholarship
- Curtis-Gordon Scholarship in Chemistry
- Ferrier Research Fund
- Fuji Xerox Master’s Scholarship in Computer Science
- Gama Foundation Institute of Governance and Policy Studies
- Girls’ Friendly Society Scholarship
- Holdsworth Scholarship in Biodiversity and Restoration
- International Institute of Modern Letters
- iPredict
- J.D. Stout Fellowship
- J.D. Stout Research Grant
- James Bertram Scholarship
- Reserve Bank Professorial Fellowship in Monetary and Financial Economics
- Robert Bostock Scholarships
- Roy McKenzie Centre for the Study of Families
- Te Kōki New Zealand School of Music Composition Project
- Te Kōki New Zealand School of Music Project Grants
- Sir Howard Kippenberger Chair in Strategic Studies
- Writer in Residence

**\$10,000–\$24,999**

- Adam Art Gallery Development Fund
- Anstiss-Garland Charitable Trust Postgraduate Scholarship in Criminology

- Antarctic Research Centre Development Fund
- Ballinger Rongotai Scholarship
- Boyd-Wilson Complex Projects
- Brenda Sampson Memorial Research Scholarship
- Climate Change Made Clear
- Craig Andrews PhD Scholarship in Accounting
- Don Trow Visiting Fellowship in Accounting Research
- Ferrier Lectureship
- G.S. King Library Bequest Fund
- Graduate Women Wellington First-in-Family Scholarship
- Ian Gordon Fellowship
- Jack Pearce Scholarship in New Zealand and English History
- Jack Richards Postgraduate Scholarship
- J.L. and K.M. Stewart Postgraduate Research Experience Travel Awards
- NZIA Cadimage Group Student Design Awards
- Support Victoria University students playing rugby at OBU Rugby Club
- Paul Callaghan Visiting Chair
- Poetry Award
- Rachael Westergaard Scholarship in Geophysics
- Sir Frank Holmes Visiting Fellowship in Policy Studies
- Sir Roy McKenzie Music Therapy Scholarship
- Te Kōki New Zealand School of Music Young Musicians’ Programme Scholarships
- Te Papa MSc Scholarship in Plant Molecular Systematics
- Victoria University Foundation Trustees’ Scholarship
- Warren Trust Scholarships

**\$5,000–\$9,999**

- Christian Theology Library
- Cigna Actuarial Scholarship
- Clare Galambos-Winter Music Scholarships
- D.F. McKenzie Lecture Fund
- Dan F. Jones Scholarship in Science
- Datacom Scholarship in Computer Science
- Graduate Women Wellington Branch Master’s by Thesis
- Graduate Women Wellington Secondary Teaching Award
- Ian Longstaff Weir House Scholarship
- John Fitzgerald Memorial Scholarship
- Joy McNicoll Postgraduate Research Award in Biomedical Science
- Mansoor Family Scholarship
- Maurice Goldsmith Lecture Fund
- Mediation Competition Project
- N.N. Danilow Scholarship in Modern European Languages
- New Zealand Business and Parliament Trust Scholarship
- PGSA Travel Grants
- Rosemary Barrington Research Grant (Social Justice Research)
- S.T. Lee Antarctic Annual Lecture
- Sir Roy McKenzie Deaf Scholarship
- T.J.A. Ballinger Scholarship
- Therle Drake Music Scholarship
- Thomas Prize in Mooting
- Victoria Research Support Grant (anonymous)
- Victoria University Staff Professional Development Award
- Young Scientist Exchange Programme

**Under \$5,000**

- A.M. Campbell Bequest—Mathematics Books
- Adam Art Gallery Friends and Members
- Adam Foundation Prize in Creative Writing
- Alan Ward Scholarship
- Alex Scobie Research Scholarship
- Alison Morton Scholarship in Ecology/Marine Biology
- Andrea Brander Accommodation Bursary Fund
- Anonymous Music Grant
- Ariadne Danilow Prize in Music
- Asian Politics Prize
- Averil Brent Scholarship in Science
- Bernard Galvin Prize
- Bernard Randall Prize in Family Law
- Biggs Family Prize In Poetry
- Bob Buckle Prize for Whangarei Boys’ High School and Whangarei Girls’ High School
- Brad McGann Filmwriting Award
- C. Wright Mills Scholarship in Criminology
- Chartered Accountants Australia and New Zealand Prize
- Chartwell Trust Student Art Writing Prize
- Chris Pottinger Memorial Prize for English
- Christina Beal Memorial Prize
- Clare Galambos-Winter Prize in Holocaust Studies
- Clark Fund in Geology
- Coleman-Brown Memorial Award
- Computer Graphics Programme Fund
- CPA Prize in Accounting
- Cullen Employment Law Prizes
- D.F. McKenzie Prize Fund
- David Carson-Parker Embassy Prize in Scriptwriting
- Elaine Geering Scholarship in English Literature
- English-Speaking Union Award
- Erasmus Prize
- Expressions Piano Trust Prize
- Former Economics and Finance Staff: Graduate Student Award
- Gamelan Prize
- Garrett Chinese Language and Literature Prize
- Girls’ Friendly Society Pasifika Scholarship
- Graduate Women Wellington Ella C. Wilson Music Award
- Graduate Women Wellington Graduate Scholarship
- Graduate Women Wellington PhD Scholarship
- Graduate Women Wellington Second Year Hutt Valley Scholarship
- Graduate Women Wellington Second Year Scholarship
- Graduate Women Wellington Secondary Teaching Scholarship Conjoint Degree
- H.A. Murray Prize
- Heritage New Zealand Award
- Holmes Prize in Public Policy
- Humanist Society of New Zealand Eileen Bone Scholarship
- Ian Gordon Prize in Linguistics
- Ian Pollard Organ Scholarship
- Ilse B. Steinberger Prize in Primary Teaching
- Information Systems Audit and Control Association (Wellington) Prize
- Irene Pestov Memorial Scholarship
- Jan Whitwell Scholarship in Economics
- Jenny Whitmarsh Award for Mathematics
- Jim Robb Memorial Prize in Sociology
- Joan Metge Prize in Anthropology

- John F. Kennedy Prize in American Government and Politics
- John F. Kennedy Prize in American History
- John Gamble Geology Award
- John Miller Award in Social Justice and Community Development
- John Miller Postgraduate Diploma in Clinical Research
- Kapiti Chorale Award in Vocal Performance
- Karis Boyd Scholarship
- Korean Ambassador’s Prize
- KPMG Prizes
- Latin American Essay Prize
- Laurie Cameron Scholarship
- Lissie Rathbone Scholarship
- Lord Cooke of Thorndon Prize
- Madle Prize in Classics
- Margaret Clark Prize
- Margaret Nielsen Music Scholarship
- Master of Applied Finance Prize
- Matthew Marshall Prize for Classical Guitar Composition
- Maurice Gee Prize in Children’s Writing
- Maurice Goldsmith Prize in Philosophy
- Max Julian Prize in Ethnomusicology
- May Gordon Prize in English Literature
- Michael Hirschfeld Scriptwriting Award
- Mona Ross Prize for Singing
- N.N. Danilow Memorial Prize
- N.N. Danilow Prize in Latin
- New Zealand Business and Parliament Trust Prize
- Niland Prize for Jazz Composition
- Norman Kirk Memorial Trust Scholarship
- New Zealand Contemporary China Research Centre
- Pablo Etchegoin Prize
- Pat Walsh Scholarship for Second-year Students
- Paul Hoffmann Prize in German
- P.F.M. Burrows Scholarship
- Photography by Woolf Art History Projects
- Postgraduate Scholarship in Classical Piano Performance
- R.W. Steele Scholarship in Accounting
- Ralph Preston-Thomas Scholarship
- Roderick Alley Prize in Human Rights
- Ross McQueen Memorial Award
- S.T. Lee Annual Lecture in Economics (Viet Nam)
- School of Geography, Environmental and Earth Sciences Award
- Science and Mathematics Education Centre
- Shayle R. Searle Visiting Fellowship in Statistics
- Shayle Searle Prize in Statistics
- Simpson R.S.V. Salient Prize
- Sir Thomas Hunter Prize
- Sociolinguistics Prize
- Spanish Embassy Essay Prize
- Stephenson & Turner Award
- Story Inc. Prize in Poetry
- Sustainable Futures Travel Award
- The Sarah Carter BDO Memorial Scholarship
- Val Gormly Memorial Prize
- Venice Biennale 2016
- Wellington City U3A Award
- Wellington Rotary Club Prizes for Science
- W.H. (Bill) Vaughan Award in Mathematics
- William Wallace Gibson School in Religious Studies
- Zander/Durden Families’ Prize

# Financial statements

|   |    |
|---|----|
| Independent auditor's report .....              | 31 |
| Summary financial statements .....              | 32 |
| Balance sheet .....                             | 33 |
| Notes to the summary financial statements ..... | 34 |



Chartered Accountants

**INDEPENDENT AUDITOR'S REPORT**  
**TO THE READERS OF**  
**VICTORIA UNIVERSITY OF WELLINGTON FOUNDATION TRUST'S**  
**SUMMARY ANNUAL REPORT**  
**FOR THE YEAR ENDED 31 DECEMBER 2015**

The summary annual report was derived from the annual report of the Victoria University Foundation Trust (the Trust) for the year ended 31 December 2015. We have considered whether the summary annual report represents, fairly and consistently, the information regarding the major matters dealt with in the annual report.

The annual report included full audited statements, and the summary annual report includes summary statements. We have audited the following summary statements reported in the summary annual report on pages 32 to 35:

- the summary statement of financial position as at 31 December 2015;
- the summaries of the statement of comprehensive revenue and expense, statement of changes in equity and statement of cash flows for the year ended 31 December 2015;
- the notes to the summary financial statements that include accounting policies and other explanatory information; and

We expressed an unmodified audit opinion on the Trust's full audited statements in our report dated 24 February 2016.

**Opinion**

In our opinion:

- the summary annual report represents, fairly and consistently, the information regarding the major matters dealt with in the annual report; and
- the summary statements comply with FRS-43 (PBE): *Summary Financial Statements*.

**Basis of opinion**

Our audit was carried out in accordance with the Auditor-General's Auditing Standards, which incorporate the International Standards on Auditing (New Zealand), and in particular with the International Standard on Auditing (New Zealand) 810: *Engagements to Report on Summary Financial Statements*. These standards require us to carry out procedures to confirm whether the summary annual report contains the information necessary, and at an appropriate level of aggregation, so as not to be misleading.

The summary statements do not contain all the disclosures required for full audited statements under generally accepted accounting practice in New Zealand. Reading the summary statements, therefore, is not a substitute for reading the full audited statements in the annual report of the Trust.

**Responsibilities of the Trustees and the Auditor**

The Trustees are responsible for preparing the summary annual report so that it represents, fairly and consistently, the information regarding the major matters dealt with in the annual report. This includes preparing summary statements, in accordance with FRS-43 (PBE): *Summary Financial Statements*. The Trustees are also responsible for the publication of the summary annual report, whether in printed or electronic form.

We are responsible for expressing an opinion on whether the summary annual report represents, fairly and consistently, the information regarding the major matters dealt with in the annual report and whether the summary statements comply with FRS 43 (PBE): *Summary Financial Statements*.

Grant Taylor  
Ernst & Young

A member firm of Ernst & Young Global

# Summary financial statements

| Summary statement of comprehensive revenue and expense | 31 Dec 15    | 31 Dec 14  |
|--|--------------|------------|
| Revenue  | \$           | \$         |
| Donations—Endowed                                      | 8,099,469    | 2,177,390  |
| Donations—Non-endowed                                  | 2,804,946    | 2,568,921  |
| Investment income                                      | 2,554,999    | 2,575,116  |
| Total revenue  | 13,459,414   | 7,321,427  |
| Expenses   |              |            |
| Grants made  | 2,778,970    | 3,077,926  |
| Finance costs  | 157,691      | 123,786    |
| Total expenses   | 2,936,661    | 3,201,712  |
| Total comprehensive revenue attributable to the Trust  | 10,522,753   | 4,119,715  |
| Summary statement of financial position                |              |            |
| Current assets including invested funds                | 42,733,484   | 32,244,495 |
| Non-current asset                                      | 9,500        | 9,500      |
| Current liabilities                                    | (419,248)    | (453,012)  |
| Accumulated funds                                      | 42,323,736   | 31,800,983 |
| Summary statement of changes in equity                 |              |            |
| Funds at beginning of the year                         | 31,800,983   | 27,681,268 |
| Comprehensive revenue/(expense)                        | 10,522,753   | 4,119,715  |
| Accumulated funds at the end of the year               | 42,323,736   | 31,800,983 |
| Summary cash flow statement                            |              |            |
| Net cash flow from operating activities                | 7,946,408    | 1,286,918  |
| Net cash flow from/(to) investing activities           | (11,415,681) | 1,011,409  |
| Net (decrease)/increase in cash and cash equivalent    | (3,469,273)  | 2,298,327  |
| Cash and cash equivalents at beginning of the year     | 6,002,496    | 3,704,169  |
| Cash and cash equivalents at end of the year           | 2,533,223    | 6,002,496  |

# Balance sheet

| ASSETS                           | 31 Dec 15  | 31 Dec 14  |
|----------------------------------|------------|------------|
| Current assets                   | \$         | \$         |
| Cash and cash equivalents        | 2,533,223  | 6,002,496  |
| Accounts receivable and accruals | -          | 95,134     |
| Investments                      | 39,987,149 | 26,055,236 |
| Other current assets             | 213,112    | 91,629     |
| Total current assets             | 42,733,484 | 32,244,495 |
| Non-current assets               |            |            |
| Property, plant and equipment    | 9,500      | 9,500      |
| Total non-current assets         | 9,500      | 9,500      |
| Total assets                     | 42,742,984 | 32,253,995 |
| LIABILITIES                      |            |            |
| Current liabilities              |            |            |
| Accounts payable and accruals    | 419,248    | 425,096    |
| Revenue received in advance      | -          | 27,916     |
| Total current liabilities        | 419,248    | 453,012    |
| Non-current liabilities          |            |            |
| Total non-current liabilities    | -          | -          |
| Total liabilities                | 419,248    | 453,012    |
| Net assets                       | 42,323,736 | 31,800,983 |
| EQUITY                           |            |            |
| Contributed equity               | 31,800,983 | 27,681,268 |
| Accumulated funds                | 10,522,753 | 4,119,715  |
| Total equity                     | 42,323,736 | 31,800,983 |

# Notes to the summary financial statements

**A Trust information**

The summary financial statements of Victoria University of Wellington Foundation (the ‘Foundation’) for the year ended 31 December 2015 were authorised for issue in accordance with a resolution of the Trustees on 24 February 2016.

The Foundation is an independent charitable trust registered under the Charities Act 2005. The Foundation is deemed solely for accounting purposes to be controlled by Victoria University of Wellington (the ‘University’).

The Foundation was established on 1 October 1990 for the purpose of raising funds from external sources for the use by the University. The Foundation is domiciled in New Zealand. Its registered office and principal place of business is in Wellington.

**B Summary financial statements**

The summary financial statements have been extracted from the full financial statements of the Foundation. The summary financial statements comply with NZ PBE FRS 43; Summary Financial Statements. The summarised financial statements do not include all the disclosures provided in the full financial statements and cannot be expected to provide as complete an understanding of the financial performance and financial position as the full set of financial statements. No amounts extracted from the full financial statements have been restated or reclassified.

To obtain a copy of the full financial statements, contact the Development Office.

The financial statements are presented in New Zealand dollars and all values are rounded to the nearest dollar (\$).

The full financial statements have been prepared in accordance with generally accepted accounting practice in New Zealand (NZ GAAP). They comply with PBE accounting standards and are in accordance with Tier 2 PBE Reduced Disclosure Regime (RDR).

The material adjustments arising from the transition to the new PBE accounting standards adopted this year are explained in note H.

**C Donations, bequests, and pledges**

Donations and bequests are recognised as income when the right to receive the funds or asset has been established.

Pledges are not recognised as assets or revenue until the pledged item is received.

Revenue from providing services is recognised as income when the services are delivered and the right to receive payment is established.

**D Investment income**

Investments held by the Foundation include investment in fixed interest funds and equity funds. These investments are managed by ANZ Bank New Zealand Ltd and revalued to fair value at balance date. A portion of these investments is exposed to foreign exchange risk.

All the investments in unit funds are valued by the fund manager. The investments are revalued monthly, based on market price.

Fair-value movements are recognised through surplus or deficit within the statement of comprehensive revenue and expense.

**E Grants expenditure**

Grants expenditure is recognised when an obligation arises to pay funds previously received as a donation for the purpose in which the funds were intended.

**F Current assets**

Current assets consist of cash and investments.

Cash and cash equivalents includes cash on hand, deposits held at call with banks, and other short term highly liquid investments.

Investments held by the Foundation include investment in fixed interest funds and equity funds. These investments are managed by ANZ Bank New Zealand Ltd and revalued to fair value at balance date. A portion of these investments is exposed to foreign exchange risk.

|   | 31 Dec 15<br>\$   | 31 Dec 14<br>\$   |
|---|-------------------|-------------------|
| Accounts receivable                                       | -                 | 95,134            |
| Cash and cash equivalents                                 | 2,533,223         | 6,002,496         |
| International equity funds                                | 16,887,241        | 11,776,196        |
| Australasian equity funds                                 | 6,371,910         | 4,216,145         |
| New Zealand fixed interest funds                          | 7,035,074         | 3,181,401         |
| International fixed interest funds                        | 9,692,924         | 6,881,494         |
| Derivative financial instruments—forward foreign exchange | 213,112           | 91,629            |
|   | <b>42,733,484</b> | <b>32,244,495</b> |

**G Subsequent events**

There were no events subsequent to balance date requiring disclosure in the financial statements (2014: Nil).

**H Adjustments to the comparative year financial statements**

**Reclassification adjustment**

The table below explains the recognition and measurement adjustments to the 31 December 2014 comparative information resulting from the transition to the new PBE accounting standards.

| Statement of financial position | NZ IFRS (PBE) 2014<br>\$ | Adjustment<br>\$ | PBE accounting<br>standard 2014<br>\$ |
|---------------------------------|--------------------------|------------------|---------------------------------------|
| Revenue received in advance     | 130,548                  | (102,632)        | 27,916                                |
| Equity as at 1 January          | 27,578,636               | 102,632          | 27,681,268                            |
| Equity as at 31 December        | 31,698,351               | 102,632          | 31,800,983                            |

For and on behalf of the Trustees, who authorised the issue of the financial statements as at 24 February 2016:

**Brent Manning**  
(Trustee)

**Grant Guilford**  
(Trustee)

# With your help ...

---

**Victoria University of Wellington has set itself on an ambitious path to be a world-leading capital city university and one of the great global-civic universities. With your help we can make it happen.**

## Sponsorship opportunities

When business and universities work together, the benefits to each other and New Zealand are powerful. You choose the focus and level of your support, and we'll work with you to tailor a recognition package to your requirements.

## Donations

Whether you care most about the cause of tertiary education, the future of your discipline, or the success of individual students, a one-off or regular donation is a practical way to make a difference.

## Bequests

A bequest or legacy can extend your support for Victoria University beyond your lifetime. All bequests, whether modest or more significant, are valued highly. Donors who plan to leave a gift in their will are invited to join the Victoria Legacy Club.

# ... we can make it happen

---

**The Victoria University Foundation is a charitable trust that raises private funds for projects of strategic importance to Victoria University that could not otherwise be realised.**

We would love to talk with you about the opportunities above or any ideas you have to help Victoria achieve its strategic goals.

Please contact the Development Office on **+64-4-463 5871** or **[vuw-foundation@vuw.ac.nz](mailto:vuw-foundation@vuw.ac.nz)**, or go to: **[www.victoria.ac.nz/support-victoria](http://www.victoria.ac.nz/support-victoria)** for more information.



Victoria University of Wellington Foundation  
Phone +64-4-463 5871  
Email [vuw-foundation@vuw.ac.nz](mailto:vuw-foundation@vuw.ac.nz)  
**[www.victoria.ac.nz/foundation](http://www.victoria.ac.nz/foundation)**

.....

© April 2016  
ISSN 2230-3723 (Print) ISSN 2230-3731 (Online)

Capital thinking.  
Globally minded.

