

Demolition at 320 The Terrace

This is a preview of the works planned in the next month for this project.

Project: Demolition of the buildings at 320 and 314 The Terrace.

Works preview: **These works are planned in May 2026:**

- Continuing works:
 - Removal of construction waste from the building and site.
 - Removal of hazardous materials from both buildings and site.
 - Scaffolding being erected.
- New works:
 - Roof works on 320 The Terrace, potentially involving a crane.
 - Removal of hazardous materials on the outside of 320 The Terrace, potentially involving jackhammers to break concrete.

Noise

- Works this month are likely to be noisy. We anticipate you will be able to hear the works as we dismantle the building by removing all fixed-on items, such as panels, lifts, flooring, paint, and ceilings.
- You will also hear scaffolding being erected.

Access

- The access to your property will not be affected by these works.
- There will be some traffic entering and exiting the site.
- Footpaths and roading will remain unchanged this month.

Hazardous materials

- Both buildings contain hazardous materials such as asbestos contained within panels.
- We will be removing hazardous materials piece-by-piece to ensure a safe and healthy environment for you and our onsite team. This will be done in accordance with New Zealand guidelines and WorkSafe requirements. Further information is on the WorkSafe website at www.worksafe.govt.nz/topic-and-industry/asbestos.
- Air-monitoring equipment is in place to assure you and our team that we are controlling our hazardous materials within the site.

Visual

- You will see works people walking around and outside the buildings within the site.
- You will see people in full protective gear as hazardous materials are removed.
- You will see hazard signage at the site entrance.

Further information:

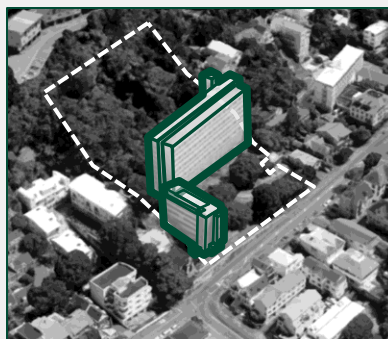
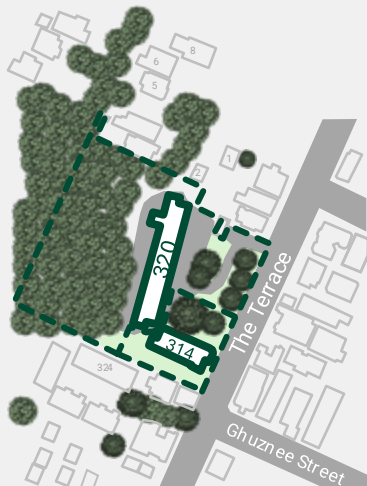
Work hours: 7am to 5.30pm Monday to Friday, 8am to 5.30pm Saturdays, and 8am to 2pm Sundays

Works start: 20 January 2026

Completion: Early 2027

Website: www.wgtn.ac.nz/320theterrace

Diagrams of the site:



Contact us:

We appreciate that these works could impact you, and thank you for your co-operation and patience while we complete them as quickly and efficiently as possible.

If you have any queries, please email us at:

320TheTerrace@vuw.ac.nz

We will get back to you promptly.

Te Herenga Waka—Victoria University of Wellington