

STUDY AT

VICTORIA



VICTORIA UNIVERSITY OF
WELLINGTON
TE HERENGA WAKA
NEW ZEALAND

UNIVERSITY OF
WELLINGTON

NEW ZEALAND



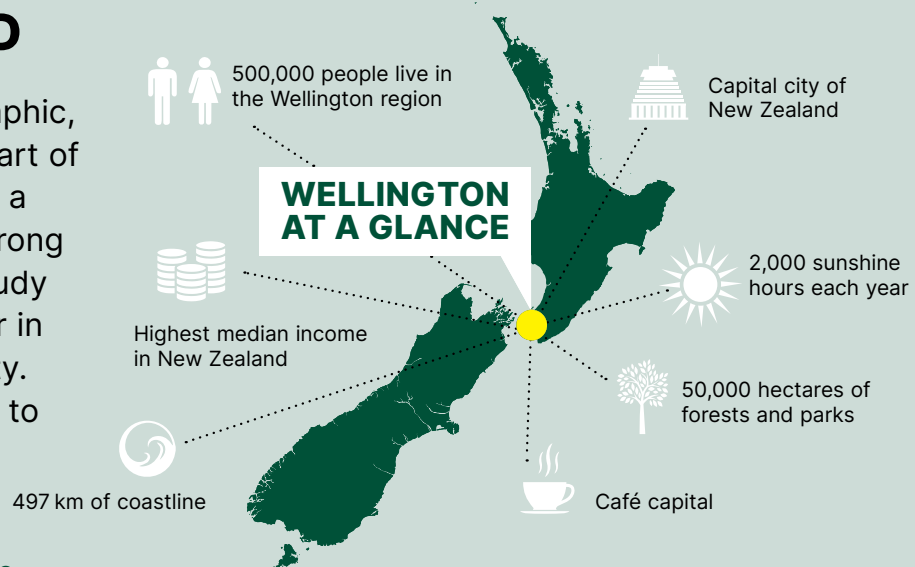
#1 IN NEW ZEALAND FOR
RESEARCH INTENSITY*

*Latest Performance-Based Research Fund Quality Evaluation

DISCOVER WELLINGTON

NEW ZEALAND

Wellington is the geographic, political, and cultural heart of New Zealand. You'll find a great quality of life, a strong global outlook, and a study experience to remember in our beautiful harbour city. There is no better place to shape your future.



For more information, go to www.wgtn.ac.nz/international/why-wellington

WELLINGTON IS AN IDEAL PLACE TO STUDY

CREATIVE

Wellington is New Zealand's most creative city. It has topped the list for the past 20 years. You can find Wētā Workshop and the Museum of New Zealand Te Papa Tongarewa here.

(Infometrics Creativity Index 2023)

SAFE

Wellington is a safe and friendly place to live. It's ranked among the top 20 safest cities in the world.

(Safest Cities in the World 2024, World Population Review)

CLEAN AND GREEN

Renowned for its clean, fresh air and green outdoor spaces, Wellington city has more than 100 parks and playgrounds, as well as a stunning waterfront, beaches, forests, and coastline.

WALKABLE

Wellington is New Zealand's most walkable city, with the average time for any Wellingtonian to walk to all amenities being 14 minutes.

(Urban Intelligence 2023)

HIGH TECH

Wellington is at the forefront of technology and innovation, with many tech companies calling it home. It's named as one of the world's '21 Places of the Future'.

(Gonzalez Center for the Future of Work 2021)

HAPPY

New Zealand is known for being one of the world's most sociable and supportive countries. It's no surprise that it ranks as the eleventh happiest country in the world.

(World Happiness Report 2024)



VICTORIA UNIVERSITY OF WELLINGTON

Our students come from about
120
countries
around the world

Top 1%
of the world's universities in
15 subject areas
(QS World University Rankings by
Subject 2024)

ZERO
CARBON BY 2030



Top 100
in the world in
10 subjects
(QS World University Rankings
by Subject 2024)



96%

of graduates were employed prior to
or within six months of completing
their degree
(2022–2023 Graduate Destinations Survey)

3,000 of our **17,000** students
are international students

170+ programmes

40+ research institutes

4 libraries

140+ clubs and societies



**3 CENTRAL
CITY CAMPUSES
IN WELLINGTON**



KELBURN



PIPITEA



TE ARO



"Victoria University of Wellington's excellent research facilities, approachable academic staff, and overall culture of friendliness and support really made it stand out compared to other schools. I love my daily commute along the coast and seeing plant life everywhere. I've also really loved the café culture."

Georgia Westfall

Student, Master of Science in Cognitive
and Behavioural Neuroscience

Scholarships

Scholarships are available for international students at all study levels. More than NZ\$28 million in scholarships is awarded each year, one of them being the Tongarewa Scholarship of either NZ\$5,000 or NZ\$10,000 towards tuition fees for one year of study.

To find out what scholarships you can apply for, go to
www.wgtn.ac.nz/international-scholarships

STUDY WHAT YOU LOVE

Victoria University of Wellington currently offers more than 170 different subjects. Below are some examples.



UNDERGRADUATE DEGREES

Choose from our 18 undergraduate degrees with a list of possible majors below. For the full list, go to our website.

www.wgtn.ac.nz/international/programmes/undergraduate

BACHELOR OF ARCHITECTURAL STUDIES

Possible majors: Architecture, Interior Architecture, Landscape Architecture, Architecture History and Theory

BACHELOR OF ARTS

Possible majors: Art History, Asian Studies, Chinese, Classical Studies, Criminology, Cultural Anthropology, Development Studies, Economics, Education, Education for the Environment, Educational Psychology, English Literature, Environmental Humanities, Film, French, Geography, German, Greek, Health Psychology, History, International Relations, Japanese, Kaitiakitanga, Language Sciences, Latin, Māori Studies, Media Studies, Modern Language Studies, Music, Pacific Studies, Philosophy, Political Science, Psychological Science, Sāmoan Studies / Matā'upu tau Sāmoa, Sociology, Spanish, Study of Religion, Te Reo Māori, Theatre

BACHELOR OF BIOMEDICAL SCIENCE

Possible majors: Human Genetics, Molecular Pathology, Molecular Pharmacology and Medicinal Chemistry

BACHELOR OF BUILDING SCIENCE

Possible majors: Project Management, Sustainable Engineering Systems

BACHELOR OF COMMERCE

Possible majors: Accounting, Actuarial Science, Commercial Law, Data Science, Economics, Finance, Human Resource Management and Employment Relations, Information Systems, International Business, Management, Marketing, Public Policy, Sustainability and Ethics in Business, Taxation, Tourism Management

BACHELOR OF COMMUNICATION

Possible majors: Intercultural Communication, Language Sciences, Literary and Creative Communication, Marketing Communication, Media Studies, Political Communication, Science Communication

BACHELOR OF DESIGN INNOVATION

Possible majors: Animation and Visual Effects, Communication Design, Design for Social Innovation, Fashion Design Technology, Game Design, Industrial Design, Interaction Design, Media Design

BACHELOR OF EDUCATION (TEACHING) EARLY CHILDHOOD

BACHELOR OF ENGINEERING WITH HONOURS

Possible majors: Cybersecurity Engineering, Electrical and Electronic Engineering, Software Engineering

BACHELOR OF ENVIRONMENT AND SOCIETY

Possible majors: Climate Science, Cultural Anthropology, Design for Social Innovation, Development Studies, Earth Science, Education for the Environment, Environmental Design, Environmental Humanities, Environmental Science, Environmental Studies, Geography, Sustainability and Ethics in Business

BACHELOR OF GLOBAL STUDIES

BACHELOR OF HEALTH

Possible majors: Health Informatics, Health Policy and Innovation, Health Promotion, Health Psychology, Physical Activity and Hauora

BACHELOR OF LAWS

BACHELOR OF MIDWIFERY

BACHELOR OF MUSIC

Possible majors: Classical Performance, Digital Music and Audio Production, Instrumental/Vocal Composition, Jazz Performance, Music Studies

BACHELOR OF POPULAR MUSIC

Possible majors: Audio Production and Recording, Electronic Music, Popular Music Studies, Songwriting (available from 2026)

BACHELOR OF PSYCHOLOGY

Possible majors: Psychological Science, Brain Sciences and Mental Health, Cognitive Science, Criminal Justice and Psychology, Educational Psychology, Health Psychology, Māori Psychology, Mental Health: Principles and Applications, Work and Organisational Psychology



BACHELOR OF SCIENCE

Possible majors: Actuarial Science, Artificial Intelligence, Biology, Biotechnology, Cell and Molecular Bioscience, Chemistry, Climate Science, Computer Graphics and Games, Computer Science, Data Science, Development Studies, Earth Science, Ecology and Biodiversity, Electronic and Computer Systems, Environmental Science, Environmental Studies, Geography, Geology, Information Systems, Marine Biology, Mathematics, Physics, Psychological Science, Science Communication, Space Science, Statistics



POSTGRADUATE DEGREES

Most of our undergraduate subject areas are also offered at postgraduate level.

Here are some of our more popular options, including specific subjects available at postgraduate or graduate diploma levels only. These have been grouped based on topics.

For the full list of our 180 postgraduate programmes, go to our website.

www.wgtn.ac.nz/international/programmes/postgraduate

ARCHITECTURAL STUDIES AND BUILDING SCIENCE

Construction Law
Interior Architecture
Landscape Architecture
Urban and Regional Planning

BUSINESS

Actuarial Science
Business Administration
Business Analysis
Global Business
Professional Accounting

DESIGN, FILM, AND MEDIA

Design Technology
Fine Arts (Creative Practice): Design;
Film or Theatre
User Experience Design
Visual Narratives

EDUCATION AND TEACHING

Educational Psychology
Teacher Education (Primary and Secondary)

ENGINEERING AND DIGITAL TECHNOLOGIES

Artificial Intelligence
Computer Science
Engineering Practice
Software Development

ENGLISH LITERATURE AND CREATIVE WRITING

Creative Writing

ENVIRONMENTAL SCIENCES

Climate Change Science and Policy
Conservation Biology
Development Studies
Ecological Restoration
Environmental Science
Environmental Studies
Marine Conservation

HEALTH

Health Leadership and Management
Health Policy, Planning, and Service Delivery
Health Psychology
Nursing Practice
Professional Practice
Workplace Health and Safety

HISTORY AND PHILOSOPHY

Museum and Heritage Studies

LANGUAGES AND LINGUISTICS

Applied Linguistics
Intercultural Communication and Applied Translation
Literary Translation Studies
Teaching English to Speakers of Other Languages (TESOL)

LAW

Construction Law
International Trade Law

MATHEMATICS AND STATISTICS

Applied Statistics
Data Science

MUSIC AND THEATRE

Ethnomusicology
Fine Arts (Creative Practice)—Music/Sound
Music Therapy
Musicology
Performance

POLITICS AND PUBLIC POLICY

International Relations
Migration Studies
Philosophy, Politics and Economics
Political Science
Public Management
Public Policy
Strategic Studies

PSYCHOLOGY

Cognitive and Behavioural Neuroscience
Cross-cultural Psychology
Forensic Psychology

SCIENCE

Drug Discovery and Development
Geophysics
Molecular Microbiology
Renewable Energy

SOCIAL SCIENCES

Indigenous Studies



AN INSPIRING ENVIRONMENT

Our capital-city location allows us to play a significant part in cultivating intellectual capital and facilitating innovation, entrepreneurship, and sustainable economic growth.

Our distinctive approach builds on our location in Aotearoa New Zealand's political and cultural capital, our proximity to internationally respected centres of creativity, and the significant value we gain from bringing Indigenous knowledge to bear on both basic and applied research.

Our partnerships help build the capability of our researchers, delivering knowledge and understanding that improve social, cultural, and economic outcomes in the Asia-Pacific.

OUR RESEARCH IS WORLD LEADING

#1 in research intensity

Victoria University of Wellington pursues ambitious research designed to challenge the status quo, push the boundaries of new knowledge, and enhance the world around us.

Since 2012, the University has been Aotearoa New Zealand's top-ranked university for intensity of high-quality research*. We have a higher proportion of our academics conducting high-quality research than any other university in New Zealand. We leverage our research strengths, and the distinctive advantages and opportunities that Wellington provides, to enrich the learning of our students and deliver transformative outcomes for our city, our nation, and the world.

At Victoria University of Wellington, we attract global scholars to develop the diversity and scale required to deliver high-impact research across the breadth of scholarship at the University.

i www.wgtn.ac.nz/research

*Based on the latest Performance-Based Research Fund Quality Evaluation.

GLOBALLY MINDED

Where diverse cultures connect

We build networks around the world to ensure intercultural and global perspectives are integrated into all aspects of university life, so that staff and students are well equipped to thrive in an international environment.

Our intellectual influence in the Asia-Pacific and beyond is built on mutually beneficial partnerships and world-leading thinking on global challenges. Our attractiveness to international research partners, students, and academics is based on research-led teaching, our leading position in New Zealand in research quality, and our location in one of the world's leading global-civic creative capitals.

i www.wgtn.ac.nz/global

JOIN US

COSTS AND FEES

Use our cost calculator to work out your likely study and living costs.

www.wgtn.ac.nz/cost-calculator

ENGLISH STUDY

Our English for Academic Purposes (EAP) programme can help you improve your English and prepare you for your academic studies.

www.wgtn.ac.nz/eap

ENTRY REQUIREMENTS

To study at Victoria University of Wellington, you will need to meet the academic and English-language entry requirements for your chosen programme of study; English-language requirements may be higher for some programmes. Academic entry requirements vary from country to country. For more information, go to our website.

www.wgtn.ac.nz/international/entry-requirements

MINIMUM ENGLISH-LANGUAGE REQUIREMENTS						
ONE OF:	IELTS Academic	TOEFL iBT	Pearson Test of English (PTE)	Cambridge English Qualifications (C1 Advanced/ C2 Proficiency)	New Zealand Certificates in English Language (NZCEL)	Victoria University of Wellington English for Academic Purposes (EAP)
Undergraduate students	Overall band of 6.0 with no sub-score below 5.5	A score of 80 on the internet-based test	A score of 50 with a 'Communicative' score of not less than 42	A score of 169 or higher, with each skill score no less than 162	NZCEL Level 4 (Academic)	A minimum of three ratings of 4 and one rating of 3
Postgraduate students	Overall band of 6.5 with no sub-score below 6.0	A score of 90 on the internet-based test, with at least 20 in writing	A score of 58 with a 'Communicative' score of not less than 50	A score of 176 or higher, with each skill score no less than 169	NZCEL Level 5 (Academic)	A minimum of two ratings of 5 and two ratings of 4

Duolingo: We currently also accept the Duolingo English Test to meet the general English requirement for most undergraduate programmes. You will need to achieve 110 overall and good scores in each sub-score. To enquire about Duolingo, contact international@vuw.ac.nz

THE PASTORAL CARE CODE

The Government's Pastoral Care Code sets out the University's role and responsibilities in ensuring the wellbeing and safety of all our students. This includes fostering learning environments that are safe and designed to support positive learning experiences of diverse student groups. During your time here, you have access to a range of services and support to promote your overall wellbeing, development, and educational achievement.

Read more about the code and our obligations.

www.wgtn.ac.nz/support

© Victoria University of Wellington, 2024

IMPORTANT NOTICE: Te Herenga Waka—Victoria University of Wellington uses all reasonable skill and care to ensure the information contained here was accurate at the time it was prepared. However, matters covered by this publication are subject to change due to a continuous process of review, and to unanticipated circumstances. The University therefore reserves the right to make any changes without notice. So far as the law permits, the University accepts no responsibility for any loss suffered by any person due to reliance (either whole or in part) on the information contained in this publication, whether direct or indirect, and whether foreseeable or not.

FOUNDATION STUDIES

In partnership with UP Education, our Foundation Studies programme will develop your knowledge and skills to equip you for undergraduate university study.

www.wgtn.up.education

INSURANCE

All students are required to have approved medical and travel insurance. For full details, go to our website.

www.wgtn.ac.nz/international-insurance

CONTACT US

Wellington University International

+64 4 463 5350

international@vuw.ac.nz

www.wgtn.ac.nz/international

FOLLOW US ON SOCIAL MEDIA

[vicuniwgtn](#)

[@vicuniwgtn](#)

[@VicUniWellington](#)

WeChat: Victoria University of Wellington

WATCH OUR VIDEOS

www.wgtn.ac.nz/youtube

