

**MUSC 166 Entrance Test  
Sample Paper 1  
ANSWERS**

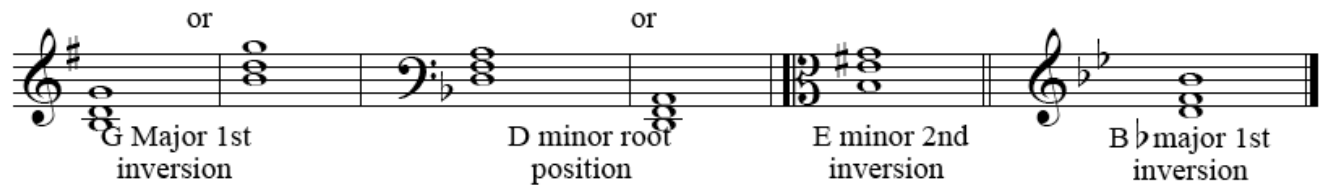
1) Insert the Correct time signatures at the beginning of the bars



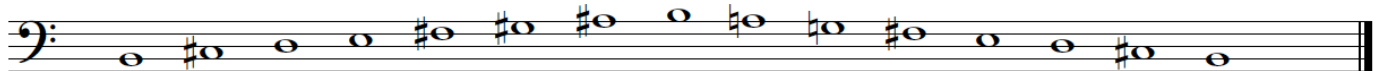
2) Copy out these bars correcting the rhythmic notation to conform with the time signatures.



3) Write the required Tonic Triads with key signatures



4) Write the Melodic version of the Scale of B Minor in the Bass clef **without** Key Signature



**Turn Over**

5) Give a complete description of these intervals (eg Major 7th)

Sample answer

Major 7th      Major 6th      Diminished 5th      Perfect 4th      Major 7th      Minor 3rd

6) Transcribe this piece into the Alto clef so that it sounds at the same pitch.

7) Write conventional chord indications under the chords of this piece and identify the two Cadences.

Chord indications: I, iii, IV, V, ii, I<sup>6</sup> or Ic, V, I

Cadences... 1) Imperfect      2) Perfect