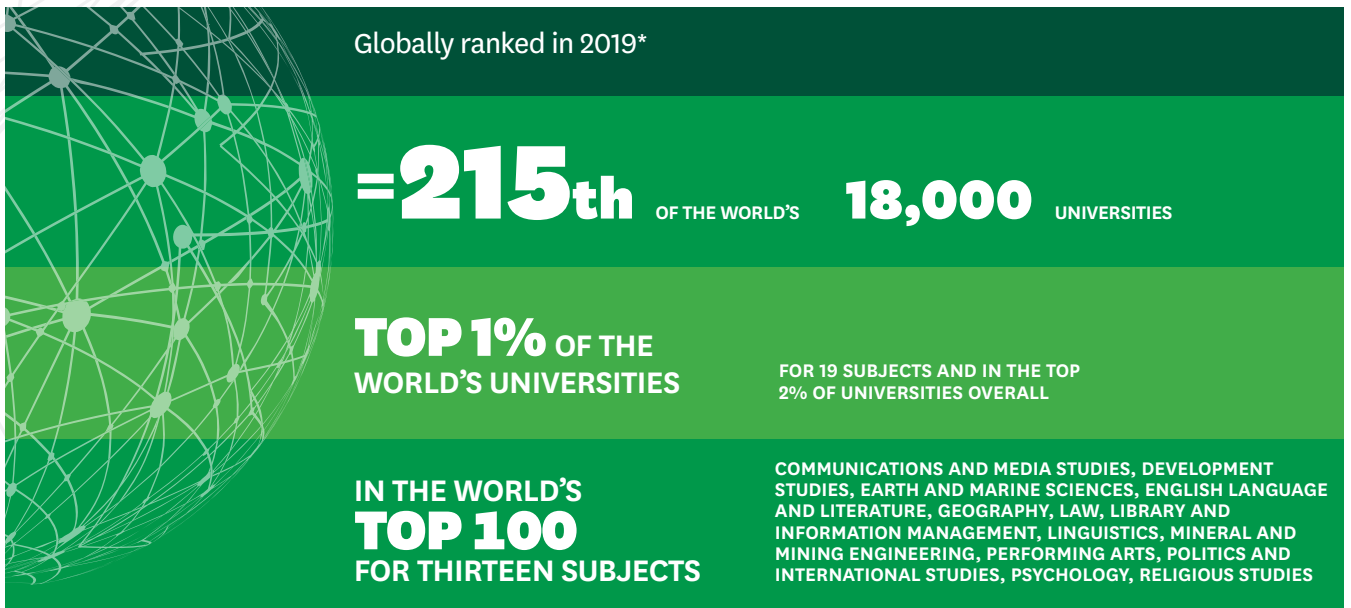


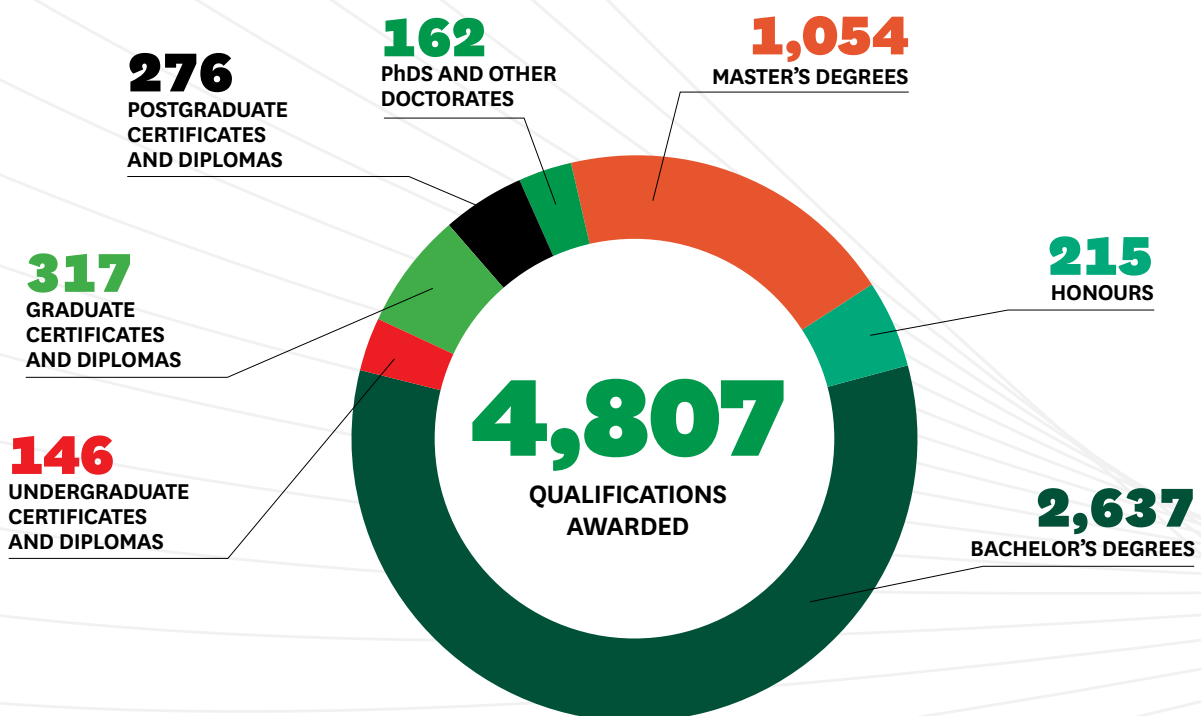
# At a glance



\*QS World University Rankings 2019.



\*\*Equivalent Full-Time Students



**\$24.7M**  
 INVESTED IN  
 SCHOLARSHIPS  
 BY THE UNIVERSITY

TOTAL REVENUE  
**\$507M**  
 TOTAL EXPENDITURE  
**\$501M**



**88.2%**  
 OF STUDENTS RATED THEIR  
 OVERALL SATISFACTION  
 WITH THE UNIVERSITY'S  
 SERVICES AND FACILITIES  
 AS 'GOOD' OR 'VERY GOOD'

**2,178**  
 PUBLICATIONS

BY ACADEMIC STAFF,  
 INCLUDING JOURNAL  
 ARTICLES, CHAPTERS,  
 BOOKS, AND  
 SCHOLARLY EDITIONS\*

\* Data calculated from the University's publications database, retrieved February 2020.

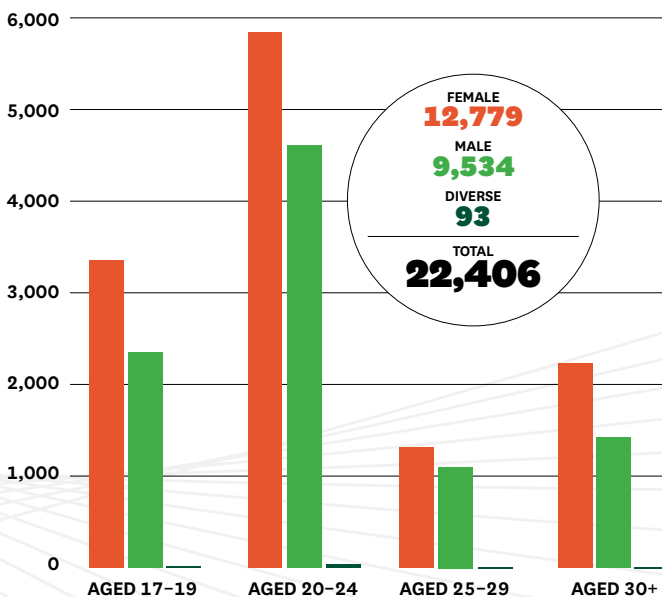
EQUIVALENT FULL-TIME STUDENTS

**15,814** GOVERNMENT FUNDED  
**2,047** FULL FEE



**STUDENT DISTRIBUTION<sup>1</sup>**

Gender diverse numbers have been added for the first time in 2019.

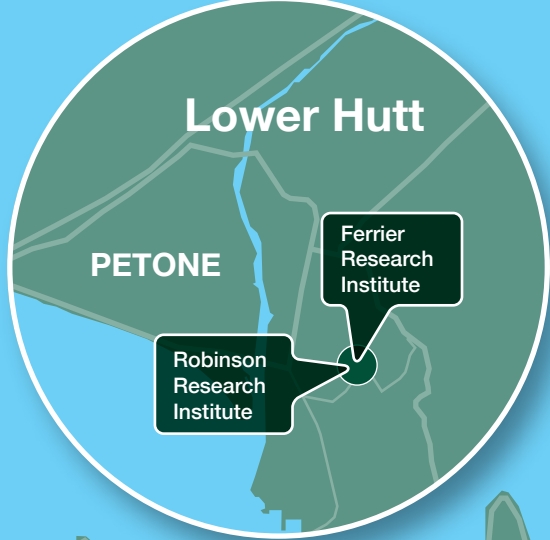
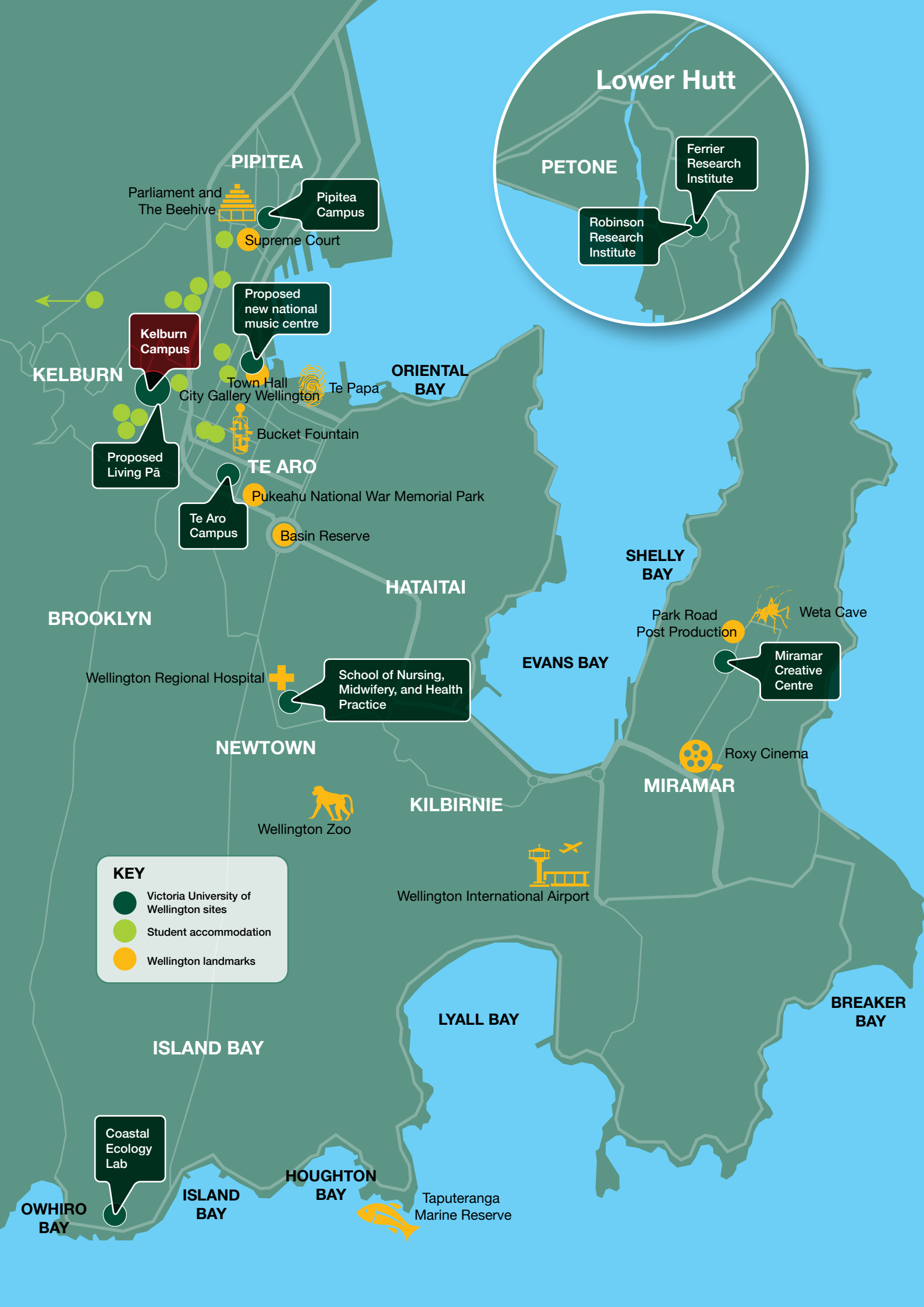


**2,340**  
 STAFF  
 (FULL-TIME EQUIVALENT)

**1,139**  
 TEACHING AND RESEARCH STAFF

<sup>1</sup> Student distribution by headcount.

<sup>2</sup> International students include all students who are not New Zealand Citizens or Permanent Residents. This includes full-fee-paying international students as well as government-funded international PhD candidates.



**KEY**

- Victoria University of Wellington sites
- Student accommodation
- Wellington landmarks