

2025



VICTORIA UNIVERSITY OF  
**WELLINGTON**  
TE HERENGA WAKA

# YOUR INTRODUCTION



**“Wellington has its way of making everyone feel welcome, no matter who you are or where you’re from. It’s New Zealand’s political epicentre and a driving force for arts and culture. And, of course, you can’t beat it on a good day!”**

Jude

Student, Bachelor of Arts and  
Bachelor of Laws



**Apply now**







Midnight

Espresso

OPEN

3 DAYS OF  
THE YEAR

50 PM to 1 AM  
WEEKDAYS

50 PM to 1 AM  
WEEKENDS  
and  
PUBLIC HOLIDAYS





# HERE TO HELP

Our Future Students team offers expert advice on coming to Te Herenga Waka—Victoria University of Wellington, choosing your subjects, and planning your degree. Look out for us at your school or contact us with any questions you have about planning your study.

## WELLINGTON OFFICE

Level 1, Hunter Building  
Kelburn Campus, Wellington

☎ 0800 04 04 04

✉ [future-students@vuw.ac.nz](mailto:future-students@vuw.ac.nz)

## AUCKLAND OFFICE

Level 4, 50 Kitchener Street,  
Auckland Central

☎ 09 300 2080 or

☎ 0800 04 04 04



**THE PASTORAL CARE CODE:** The Government's Pastoral Care Code sets out the University's roles and responsibilities in ensuring the safety and wellbeing of all our students. This includes fostering learning environments that are safe and designed to support positive learning experiences of diverse learner groups. During your time here, you have access to a range of services and support to promote your overall wellbeing, development, and educational achievement. Read more about the code and our obligations.

📄 [www.wgtn.ac.nz/support](http://www.wgtn.ac.nz/support)

**IMPORTANT NOTICE:** Te Herenga Waka—Victoria University of Wellington uses all reasonable skill and care to ensure the information contained here was accurate at the time it was prepared. However, matters covered by this publication are subject to change due to a continuous process of review, and to unanticipated circumstances. The University therefore reserves the right to make any changes without notice. So far as the law permits, the University accepts no responsibility for any loss suffered by any person due to reliance (either whole or in part) on the information contained in this publication, whether direct or indirect, and whether foreseeable or not.





# CONTENTS

## PREPARE FOR STUDY

Explore areas of study	4
The Living Pā	10
Welcome to Wellington	12
Get ready for study	14
Life on campus	16
Māori students	20
Pasifika students	22
International students	24
Leadership and studying overseas	26
Information for whānau	28
What university study will cost	30
Scholarships	32
Accommodation	34
Planning ahead	36
Admission	38

OUTSTANDING



Te Herenga Waka—Victoria University of Wellington has been awarded an overall five-stars-plus rating in the QS Stars university rating system, one of only 17 universities worldwide to do so. The University gained a total score of 966 out of a possible 1,000 points across eight audited categories, including maximum points for

the employability and inclusiveness categories. Maximum points were awarded for 25 of the more than 30 indicators, including overall student satisfaction; further study; graduate employment rate; international diversity, support, and collaborations; academic reputation; satisfaction with teaching; campus facilities; accreditations; art and cultural investment and facilities; disabled access; scholarships and bursaries; low-income outreach; and student cohort diversity.

## OUR DEGREES

Planning your first year	44
Architecture	46
Arts	48
Biomedical Science	50
Building Science	52
Commerce	54
Communication	56
Design Innovation	58
Education and Teaching	60
Engineering	62
Global Studies	64
Health	66
Law	68
Midwifery	70
Music	72
Psychology	74
Science	76

## GENERAL INFORMATION

Events	78
Connect with us	80
The University's campuses and halls	<i>Inside back cover</i>

# EXPLORE AREAS OF STUDY



Architectural model by Haoyu Ye for ARCI 212  
Architecture Design Integration I /  
Te Whakakotahitanga o ngā Tikanga Wakarākei Whare I.



## ARCHITECTURE AND BUILDING SCIENCE

- ▶ Architecture (see page 46)
- ▶ Architecture History and Theory (see page 47)
- ▶ Interior Architecture (see page 47)
- ▶ Landscape Architecture (see page 47)
- ▶ Project Management (see page 53)
- ▶ Sustainable Engineering Systems (see page 53)

## ARTS AND EXPRESSION

- ▶ Art History (see page 49)
- ▶ Creative Writing (see pages 49 and 57)
- ▶ English Literature (see pages 49 and 57)
- ▶ Film (see pages 49 and 57)
- ▶ Literary and Creative Communication (see page 57)
- ▶ Music (see pages 49 and 72)
- ▶ Theatre (see pages 49 and 57)



## BUSINESS

- ▶ Accounting (see page 55)
- ▶ Actuarial Science (see pages 55, 63, and 77)
- ▶ Banking (see page 55)
- ▶ Business Ethics and Sustainability Management (see page 55)
- ▶ Commercial Law (see page 55)
- ▶ Data Science (see pages 49, 55, and 77)
- ▶ Economics, Econometrics, and Finance (see page 55)
- ▶ Ethical Leadership and Intercultural Communication (see page 65)
- ▶ Health Informatics (see page 67)
- ▶ Human Resource Management and Employment Relations (see page 55)
- ▶ Information Systems (see pages 55, 57, and 77)
- ▶ Innovation and Entrepreneurship (see page 55)
- ▶ International Business (see page 55)
- ▶ Management (see page 55)
- ▶ Māori Resource Management (see page 49)
- ▶ Marketing (see page 55)
- ▶ Marketing Communication (see page 57)
- ▶ Public Policy (see pages 49, 55, and 57)
- ▶ Taxation (see page 55)
- ▶ Tourism Management (see page 55)
- ▶ Work and Organisational Psychology (see page 75)
- ▶ World Affairs and Organisations (see page 65)





## CLIMATE AND ENVIRONMENT

- ▶ Biotechnology (see page 77)
- ▶ Business Ethics and Sustainability Management (see page 55)
- ▶ Development Studies (see pages 49 and 77)
- ▶ Ecology and Biodiversity (see page 77)
- ▶ Environment and Sustainability, Environmental Science, Environmental Studies (see pages 65 and 77)
- ▶ Geography (see pages 49 and 77)
- ▶ Globalisation, Movement, and Change (see page 65)
- ▶ Māori Resource Management (see page 49)
- ▶ Marine Biology (see page 77)
- ▶ Sustainable Engineering Systems (see page 53)



## COMMUNICATION

- ▶ Communication Design (see pages 57 and 58)
- ▶ Ethical Leadership and Intercultural Communication (see page 65)
- ▶ Intercultural Communication (see page 57)
- ▶ Linguistics (see pages 49 and 57)
- ▶ Literary and Creative Communication (see page 57)
- ▶ Marketing Communication (see page 57)
- ▶ Media Studies (see pages 49 and 57)
- ▶ Political Communication (see page 57)
- ▶ Science Communication (see pages 57 and 77)



*Pull Dry by Joshua Unwin for INDN 241 Sustainable Mediums / Ngā Huarahi Toitūtanga.*

## DESIGN

- ▶ Animation and Visual Effects (see page 58)
- ▶ Communication Design (see pages 57 and 58)
- ▶ Design for Social Innovation (see pages 57 and 59)
- ▶ Fashion Design Technology (see page 59)
- ▶ Game Design (see page 59)
- ▶ Industrial Design (see page 59)
- ▶ Interaction Design (see page 59)
- ▶ Media Design (see page 59)

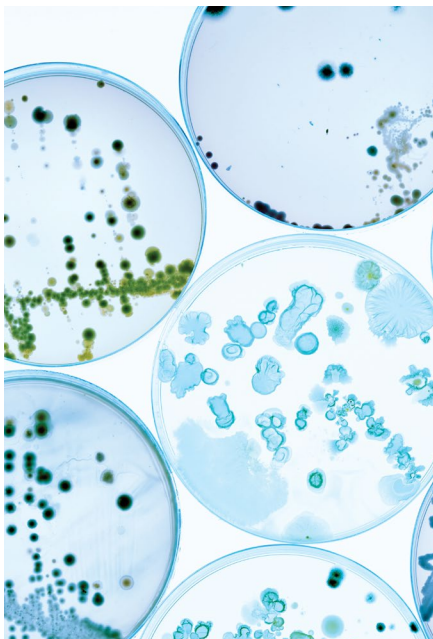
## EDUCATION AND TEACHING

- ▶ Early Childhood Teaching (see page 60)
- ▶ Education (see page 60)
- ▶ Educational Psychology (see pages 49, 60, and 75)
- ▶ Primary and Secondary Teaching (see page 61)
- ▶ Teaching English to Speakers of Other Languages (TESOL) (see pages 49 and 60)



## ENGINEERING AND DIGITAL TECHNOLOGIES

- ▶ Artificial Intelligence (see pages 63 and 77)
- ▶ Biotechnology (see page 77)
- ▶ Building Science (see page 52)
- ▶ Cognitive Science (see page 74)
- ▶ Computer Graphics and Games (see pages 63 and 77)
- ▶ Computer Science (see page 77)
- ▶ Cybersecurity Engineering (see page 62)
- ▶ Electrical and Electronic Engineering (see page 62)
- ▶ Electronic and Computer Systems (see page 77)
- ▶ Software Engineering (see page 63)



## HEALTH

- ▶ Biomedical Sciences: Human Genetics; Molecular Pathology; Molecular Pharmacology and Medicinal Chemistry (see pages 50 and 57)
- ▶ Biotechnology (see page 77)
- ▶ Brain Sciences and Mental Health (see page 74)
- ▶ Cell and Molecular Bioscience (see page 77)
- ▶ Global Health and Wellbeing (see page 65)
- ▶ Health Informatics (see page 67)
- ▶ Health Promotion (see page 67)
- ▶ Health Psychology (see pages 67 and 75)
- ▶ Mental Health: Principles and Applications (see page 75)
- ▶ Midwifery (see page 70)
- ▶ Population Health, Policy and Service Delivery (see page 67)
- ▶ Psychological Science (see pages 49, 57, 74, and 77)

## HISTORY AND PHILOSOPHY

- ▶ Area and Cultural Studies (see page 65)
- ▶ Art History (see page 49)
- ▶ Classical Studies (see page 49)
- ▶ Cultures and Identities (see page 65)
- ▶ History (see page 49)
- ▶ Philosophy (see page 49)







## LANGUAGES AND CULTURES

- ▶ Academic and Professional Writing (see page 49)
- ▶ Culture Studies: Area and Cultural Studies (see page 65); Asian Studies (see pages 49 and 57), Classical Studies (see page 49); Cultures and Identities (see page 65); Māori Studies (see pages 49 and 57); Pacific Studies (see pages 49 and 57)
- ▶ Development Studies (see pages 49 and 77)
- ▶ English Literature (see pages 49 and 57)
- ▶ Ethical Leadership and Intercultural Communication (see page 65)
- ▶ Globalisation, Movement, and Change (see page 65)
- ▶ Intercultural Communication (see page 57)
- ▶ Language Studies: Chinese; French; German; Greek; Japanese; Latin; New Zealand Sign Language; Sāmoan Studies; Spanish; Te Reo Māori (see pages 49 and 57)
- ▶ Linguistics (see pages 49 and 57)
- ▶ Māori Psychology (see page 75)
- ▶ Māori Resource Management (see page 49)
- ▶ Modern Language Studies (see page 49)
- ▶ Teaching English to Speakers of Other Languages (TESOL) (see pages 49 and 60)

## LAW, POLITICS, AND GOVERNMENT

- ▶ Commercial Law (see page 55)
- ▶ Criminal Justice and Psychology (see page 75)
- ▶ Human Rights, Justice, and Peace (see page 65)
- ▶ International Relations (see pages 49 and 57)
- ▶ Law (see page 68)
- ▶ Political Science (see pages 49 and 57)
- ▶ Population Health, Policy and Service Delivery (see page 67)
- ▶ Public Policy (see pages 49, 55, and 57)

## MATHEMATICS AND STATISTICS

- ▶ Actuarial Science (see pages 55, 63, and 77)
- ▶ Data Science (see pages 49, 55, and 77)
- ▶ Econometrics (see page 55)
- ▶ Mathematics (see pages 49, 63, and 77)
- ▶ Statistics (see pages 63 and 77)

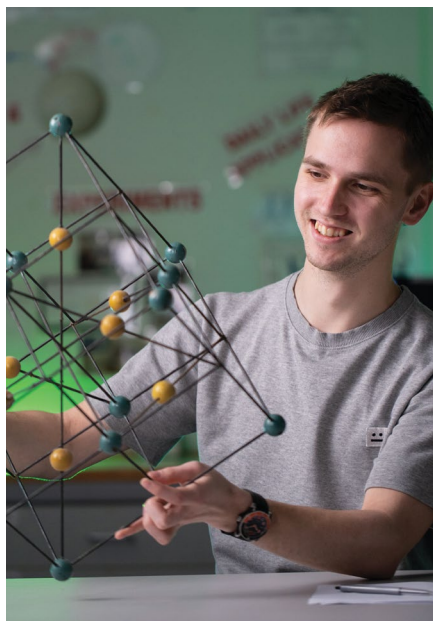


## MUSIC

- ▶ Classical/Jazz Performance (see page 73)
- ▶ Digital Music and Audio Production (see page 73)
- ▶ Instrumental/Vocal Composition (see page 73)
- ▶ Music (see pages 49 and 72)
- ▶ Music Studies (see page 73)
- ▶ Popular Music Studies (see pages 49, 57, and 73)

## PSYCHOLOGY

- ▶ Brain Sciences and Mental Health (see page 74)
- ▶ Cognitive Science (see page 74)
- ▶ Criminal Justice and Psychology (see page 75)
- ▶ Educational Psychology (see pages 49, 60, and 75)
- ▶ Health Psychology (see pages 67 and 75)
- ▶ Māori Psychology (see page 75)
- ▶ Mental Health: Principles and Applications (see page 75)
- ▶ Psychological Science (see pages 49, 57, 74, and 77)
- ▶ Work and Organisational Psychology (see page 75)



## SCIENCE

- ▶ Actuarial Science (see pages 55, 63, and 77)
- ▶ Artificial Intelligence (see pages 63 and 77)
- ▶ Biology/Marine Biology (see page 77)
- ▶ Biomedical Sciences: Human Genetics; Molecular Pathology; Molecular Pharmacology and Medicinal Chemistry (see pages 50 and 57)
- ▶ Biotechnology (see page 77)
- ▶ Cell and Molecular Bioscience (see page 77)
- ▶ Chemistry (see page 77)
- ▶ Computer Science, Computer Graphics and Games, Electronic and Computer Systems (see pages 63 and 77)
- ▶ Data Science (see pages 49, 55, and 77)
- ▶ Development Studies (see pages 49 and 77)
- ▶ Earth Sciences (see page 77)
- ▶ Ecology and Biodiversity (see page 77)
- ▶ Environment and Sustainability, Environmental Science, Environmental Studies (see pages 65 and 77)
- ▶ Geography (see pages 49 and 77)
- ▶ Information Systems (see pages 55, 57, and 77)
- ▶ Mathematics, Statistics (see pages 49, 63, and 77)
- ▶ Physics (see page 77)
- ▶ Psychological Science (see pages 49, 57, 74, and 77)
- ▶ Science Communication (see pages 57 and 77)
- ▶ Science in Society (see page 77)
- ▶ Space Science (see page 77)



## SOCIAL SCIENCES

- ▶ Criminology (see page 49)
- ▶ Cultural Anthropology (see pages 49 and 57)
- ▶ Cultures and Identities (see page 65)
- ▶ Development Studies (see pages 49 and 77)
- ▶ Economics (see page 55)
- ▶ Environmental Studies (see page 77)
- ▶ Gender and Sexuality Studies (see page 49)
- ▶ Geography (see pages 49 and 77)
- ▶ Globalisation, Movement, and Change (see page 65)
- ▶ Human Rights, Justice, and Peace (see page 65)
- ▶ International Relations (see pages 49 and 57)
- ▶ Māori Resource Management (see page 49)
- ▶ Māori Studies (see pages 49 and 57)
- ▶ Media Studies (see pages 49 and 57)
- ▶ Philosophy (see page 49)
- ▶ Religious Studies (see page 49)
- ▶ Social Policy (see page 49)
- ▶ Sociology (see page 49)

  
**FIND OUT MORE**





# THE LIVING PĀ OPEN FOR 2025



Image: Te Herenga Waka marae at Victoria University of Wellington, showing (centre) the meeting house, Te Tumu Herenga Waka, and (left) a glimpse of the Living Pā, opening on December 6, 2024. Sketch by Stantiall's Studio.



# TIAKINA A PAPATŪĀNUKU—CARING FOR PAPATŪĀNUKU BY OUR ACTIONS

The Living Pā is our new marae-based learning, teaching, research, and engagement hub.

As one of the most cutting-edge, environmentally responsible buildings in the world, the pā asks us to reset our standards and be bold in ways that were once unimaginable.

The Living Pā will be a space for students, staff, and communities to connect, study, innovate, and explore how we can build a more equitable, fair, and sustainable future.



**“As students, we are so excited about the Living Pā, to have a new space to come together, to be free to be ourselves as Māori and learn about sustainable living.”**

**Ashley McGregor (Te Rarawa)**  
Student, Bachelor of Arts and co-president,  
Te Hōhaietī o Te Reo Māori



**“Our health and wellbeing is a reflection not just of our lifestyle, our place in communities, but also of how healthy our natural environments are. The Living Pā is a way for us to be actively empowered to work, teach, and learn sustainably, to walk the talk, and live out our tikanga.”**

**Dr Ocean Mercier (Ngāti Porou)**  
Associate professor, Te Kawa a Māui  
(School of Māori Studies)

▼  
**FIND OUT MORE**

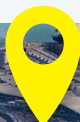




# WELCOME WELL

## PIPITEA CAMPUS

Study Law and Commerce in the heart of Wellington's legal, government, and business district.



## UNLOCK YOUR CAREER

We have strong connections with community, corporate, cultural, diplomatic, legal, media, non-governmental, political, public sector, and scientific organisations. Our capital-city connections mean students have excellent opportunities for part-time work, volunteering, and internships, as well as networking for jobs once they graduate.



## KELBURN CAMPUS

The centre of your first-year experience.



## THE LIVING PĀ

Located at the Kelburn campus, the Living Pā is our new marae-based learning, teaching, research, and engagement hub and will be open for 2025 study.





# WELLINGTON

## SUSTAINABILITY

In 2023, Victoria University of Wellington was ranked in the top 100 universities internationally in the QS World University Rankings for Sustainability.

## STUDENT LIFE IN WELLINGTON

Wellington is a student-friendly city that makes the most of its natural surroundings. It's compact and easy to get around. You can walk just about anywhere or ride our great public transport system, including buses, trains, and the famous Wellington Cable Car. In just minutes, you can escape the city to explore miles of coastline, take a walk in native bush, or relax on sandy beaches. Visit galleries and museums, get among the vibrant nightlife, and check out the street festivals, theatre shows, and music gigs, or sporting events such as the Hurricanes' games at the stadium.



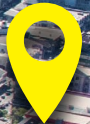
## GLOBAL REPUTATION

The University is ranked in the top 2 percent of the world's universities overall. It is New Zealand's top ranked university for intensity of high-quality research (2018 Performance-Based Research Fund), and in 18 subject areas, we are among the top 1 percent of the world's universities (2023 QS World University Rankings by Subject). A number of our staff have also won National Tertiary Teaching Excellence awards for innovative teaching.



## TE ARO CAMPUS

Explore Architecture and Design Innovation and soak up the culture in the creative Cuba Quarter.



# GET READY FOR STUDY

**INFORMATION  
EVENINGS**  
(page 79)

**JUNE**  
Scholarship  
applications  
open for 2025  
(page 32)



**GUIDE TO  
UNDERGRADUATE  
STUDY AVAILABLE**

**2 SEPTEMBER**  
School-leaver scholarship  
applications due  
(page 32)



**MAY 2024**

**JUN 2024**

**JUL 2024**

**AUG 2024**

**SEP 2024**

**OCT 2024**

**JUNE**  
Explore accommodation  
options for 2025  
(page 34)

**NZSM  
PERFORMANCE  
AUDITIONS**  
Applications due  
mid-July  
(page 72)

**SEPTEMBER**  
Course  
enrolments  
open for 2025

**MID-SEPTEMBER**  
Halls of residence  
offers sent out  
(page 34)

**23 AUGUST**  
Open Day  
(page 78)





**1 DECEMBER**  
International students'  
first-year admission  
applications due for  
February 2025 intake



**24 FEBRUARY 2025**  
Trimester 1 begins



**20 JANUARY 2025**  
Study applications due



**1 NOVEMBER**  
School leavers  
should apply to  
study by this date  
to ensure a place  
in their preferred  
programme

**1 DECEMBER**  
School leavers  
should enrol in  
courses by this  
date to ensure  
a place in their  
preferred courses



**17–21 FEBRUARY 2025**  
New Students' Orientation  
week and International  
New Students' Orientation  
(page 18)





# LIFE ON CAMPUS

Your journey at university will offer you a range of new and exciting experiences. You'll have access to student services and activities to help you succeed both in and out of the classroom.

The University has three central city campuses: Kelburn, Pipitea, and Te Aro. Next time you're in town, book a campus tour or visit our halls of residence, and get a taste of student life in Wellington. See page 80 for more information.

## ACADEMIC SUPPORT

Learning advisers at Te Taiako—Student Learning can work with you to develop the academic study and writing skills necessary for university study at undergraduate and postgraduate level. We provide workshops, resources, and individual appointments.

Titoko is the Centre for Student Success that provides comprehensive support for students across all the University's faculties and schools. We act as a first point of contact for questions about studies, student administration, support services, and student life in general. Every student has access to a student success adviser who can provide more in-depth support.

**i** [www.wgtn.ac.nz/student-learning](http://www.wgtn.ac.nz/student-learning)



## ART GALLERY

Te Pātaka Toi Adam Art Gallery, the University's on-campus art gallery, initiates, produces, and presents a highly regarded programme of exhibitions, events, and publications; manages and develops Ngā Puhipuhi o Te Herenga Waka—Victoria University of Wellington Art Collection; and provides a vital platform for critical thinking across media, disciplines, cultures, and contexts. The gallery is open Tuesday to Sunday and admission is free.

**i** [www.adamartgallery.nz](http://www.adamartgallery.nz)

## CAREERS AND EMPLOYMENT

Te Ratonga Rapu Mahi—Wellington Careers and Employment can assist you with the exploration of career ideas, the career implications of subject choices, and details of specific jobs and employers. We help you meet employers, apply for jobs and internships, and provide resources for ongoing career development.

**i** [www.wgtn.ac.nz/careers](http://www.wgtn.ac.nz/careers)

## CLASSICS MUSEUM

The Classics Museum, located on the Kelburn campus, houses a small collection of antiquities, mostly Greek and Roman. The earliest objects we have are a flint and sherds from the Neolithic period (6000–3000 BCE, not currently on display); the latest are Roman coins and objects from around the sixth century CE. It includes holdings primarily of Greek, Roman, and Etruscan artefacts. The collection predominantly consists of vases and terracottas, but also includes objects in bronze, glass, stone, and other metals. It was conceived, and continues to be developed, as a teaching collection.

**i** [www.wgtn.ac.nz/classics-museum](http://www.wgtn.ac.nz/classics-museum)

## CLUBS

Joining a club is a great way to meet people, learn new skills, and make your experience at the University a rich and rewarding one. With more than 140 clubs on campus, including cultural, performing arts, political, social, religious, and sporting groups, there's sure to be one for you.

**i** [www.wgtn.ac.nz/clubs](http://www.wgtn.ac.nz/clubs)

## DISABILITY SERVICES

Te Amaru—Disability Services works in partnership with students and staff to ensure students can fully participate and achieve their aspirations, and to strengthen the University's culture of inclusion. At our university, disability includes the Deaf and those with injuries or physical, mental, sensory, specific learning, or health impairments. The team provides individual coaching, liaison with academic staff, adaptive technology, inclusive learning software, sign-language interpreting, lecture information capture, assessment support, mobility parking, and quiet places to rest and study. Students can meet with a disability and inclusion adviser on campus or online.

Each campus has an accessible route, which is indicated on the maps.

**✉** [disability@vuw.ac.nz](mailto:disability@vuw.ac.nz)

**i** [www.wgtn.ac.nz/disability](http://www.wgtn.ac.nz/disability)

**i** [www.wgtn.ac.nz/maps](http://www.wgtn.ac.nz/maps)

## FINANCE

Te Ratonga Penapena Pūtea—Student Finance can provide practical advice on budgeting, coping financially, hall payment plans, and help with some questions related to Student Loan and Student Allowance applications. We can also provide emergency financial assistance through the Pūtea Āwhina—Hardship Fund.

**i** [www.wgtn.ac.nz/financial-advice](http://www.wgtn.ac.nz/financial-advice)

## HEALTH AND COUNSELLING

Our doctors and nurses at Mauri Ora—Student Health and Counselling provide a full range of health services, including care if you have had an accident, if you are unwell, or if you are managing an ongoing health condition. Appointments for contraception, sexual health checks, and preventative healthcare such as immunisations are also available. Same-day appointments are available for urgent cases. Consultations are free if you register with us.

Counsellors are available on all campuses to confidentially discuss personal and academic issues that may be affecting your general sense of wellbeing, learning, or relationships. Duty counsellors are available each day for urgent cases. Personal development and wellbeing programmes are also available.

**i** [www.wgtn.ac.nz/mauri-ora](http://www.wgtn.ac.nz/mauri-ora)

## ORIENTATION

New Students' Orientation is your opportunity to find your way around, meet new people, and pick up some vital academic preparation skills. Get organised and set up for a successful year of study with help from our student ambassadors and the UNI101 programme, while enjoying fun activities and gigs all over campus.

**i** [www.wgtn.ac.nz/orientation](http://www.wgtn.ac.nz/orientation)



## RAINBOW AND INCLUSION

Sterling Jones (they/them) is the University's kaiārahi kahukura—rainbow and inclusion adviser. They are here to offer guidance to rainbow students while on their journey at university, including students who are questioning their gender or sexuality or who don't like using labels. Sterling is your first point of contact for advice. They can help with:

- ▶ connecting with the rainbow and university communities
- ▶ family, culture, faith, and being queer
- ▶ finding rainbow-friendly support in the community
- ▶ legal and preferred name changes
- ▶ questions about gender and sexuality.

Conversations with Sterling are private and confidential. Send them an email with questions or to make an appointment.

Our Rainbow hub webpage has more information on support for rainbow students and Rainbow communities on campus.

**✉** [rainbow@vuw.ac.nz](mailto:rainbow@vuw.ac.nz)

**i** [www.wgtn.ac.nz/rainbow](http://www.wgtn.ac.nz/rainbow)

## REFUGEE-BACKGROUND STUDENTS

The University's refugee-background student adviser and our staff network can connect tauira konene (refugee-background students) with support services, staff, and events to help support your studies and enable you to make the most out of your time at university.

**i** [www.wgtn.ac.nz/refugee-background-students](http://www.wgtn.ac.nz/refugee-background-students)

## SPIRITUAL SUPPORT

Our chaplains can provide pastoral and practical support for all students, regardless of belief or background. We're always available to talk. Drop by for \$2 filter coffee and hot drinks at Ramsey Cafe, 8 Kelburn Parade or email us.

**i** [www.chaplaincyvuw.org.nz](http://www.chaplaincyvuw.org.nz)



## SPORTS AND RECREATION

We offer a range of sports opportunities and support services, catering for casual to competitive participants. These include drop-in casual sports sessions, social leagues, national tertiary sports tournaments, and support for high-performance athletes—including sports scholarships and our Athlete Support Network.

Success starts with self-care—find your balance with University Recreation Wellington. Your on-campus team is committed to supporting the student community through fitness, wellbeing, clubs, and sports opportunities. Focus on your own wellbeing by staying active, re-energising, and connecting socially. Sign up for an affordable fitness membership and access functional fitness equipment, weights, a comprehensive selection of cardio equipment, and our popular group exercise classes. Our staff and services are welcoming, friendly, and inclusive to all. We have gender-inclusive bathroom facilities available at our Kelburn Recreation Centre.

- 📍 [www.wgtn.ac.nz/sports](http://www.wgtn.ac.nz/sports)
- 📍 [www.wgtn.ac.nz/recreation](http://www.wgtn.ac.nz/recreation)

## WELLBEING

Stay well while you are studying with a range of student-led wellbeing programmes at Manawa Ora—Student Wellbeing. Use our wellbeing resources to help you feel calm, improve your sleep, make social connections, and navigate a study/life balance. Visit the Bubble, a place for you to take time out and connect with other students, or join a peer support group.

- 📍 [www.wgtn.ac.nz/wellbeing](http://www.wgtn.ac.nz/wellbeing)

## WGTN HALL

WGTN Hall is a hall without walls, designed for students who don't live in a hall of residence. WGTN Hall gives you the chance to enjoy your first-year experience by offering a range of social activities, academic and wellness support, and opportunities to connect with other students and make new friends. Get more information and register for WGTN Hall online.

- 📍 [www.wgtn.ac.nz/wgtn-hall](http://www.wgtn.ac.nz/wgtn-hall)



 **FIND OUT MORE**





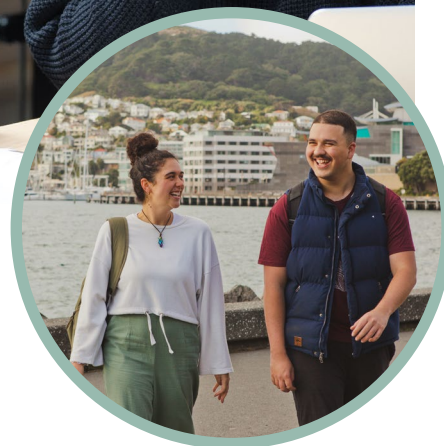
# MĀORI STUDENTS

Nau mai, haere mai, welcome to Te Herenga Waka. We have a supportive whānau environment waiting to welcome you here. Broaden your learning opportunities by working with quality lecturers across the disciplines.

## Māori future-student adviser

Te Mapihi Tutua-Nathan, the kaitawaka Māori (Māori future-student adviser), is your first point of contact at the University. She can provide advice on university study, planning your programme, scholarships, and the range of services for Māori students that will help you achieve your academic goals.

✉ [temapihi.tutuanathan@vuw.ac.nz](mailto:temapihi.tutuanathan@vuw.ac.nz)



**FIND OUT MORE**





## SUPPORT ON CAMPUS

### Āwhina—Māori Student Success

Āwhina is an all-Māori team of past and current university students. We are one part of the on-campus whānau for tauira Māori and our goal is to help you make the most of your time at Te Herenga Waka.

To do this, we strive to provide a culturally safe, positive, and holistic experience for tauira Māori that encourages cultural confidence and academic success. This means helping you get the grades you want without sacrificing who you are. We are here to provide support for all Māori students enrolled at the University, whether you are a school leaver or a mature student, and whether you know your tūrangawaewae or not.

Through a shared experience with us and other tauira Māori, we will help you develop your individual skills and find your place to stand. Some of our regular services include:

- ▶ study wānanga
- ▶ one-to-one hui with Āwhina kaiakiaki
- ▶ connecting you with other tauira Māori
- ▶ general get-togethers and academic workshops
- ▶ advocacy
- ▶ referrals to other services.

✉ [awhina@vuw.ac.nz](mailto:awhina@vuw.ac.nz)

📷 [www.instagram.com/awhina\\_vuw](https://www.instagram.com/awhina_vuw)

📘 [www.facebook.com/AwhinaVUW](https://www.facebook.com/AwhinaVUW)

### Health and counselling

Professional, confidential counselling is available for any issue affecting personal or academic success (see page 18).

### Library support

The Library has a kairauhī who specialises in providing study support with a kaupapa Māori focus.

### Māori learning adviser

Te Taiako—Student Learning (see page 16) has a kaiārahi ako Māori (Māori learning adviser) to support Māori students with study and writing skills.

## STUDENT GROUPS

### Ngāi Tauira

Ngāi Tauira, the University's Māori students' association, provides support to Māori students for their specific cultural, educational, political, and social needs.

### Ngā Rangahautira

Ngā Rangahautira, the Māori Law students' association, is a group that is passionate about developing skilled Māori Law students with a commitment to kaupapa Māori.

### Ngā Tāura Ūmanga

Ngā Tāura Ūmanga, the Māori Commerce students' association, plays a key role in developing strong relationships between Māori students, staff, and alumni within the Wellington School of Business and Government.

### Te Hōhaieti o Te Reo Māori

Te Hōhaieti o Te Reo Māori, the Māori Language Society, is a group that seeks to provide space at the University for students to utilise and strengthen their use of te reo Māori. Te Hōhaieti organises and facilitates activities and events for students, regardless of their te reo Māori proficiency.

## LIVING PĀ AND MARAE

The Living Pā is the home of Te Herenga Waka marae, the University's marae on our Kelburn campus. It is a multipurpose teaching, learning, research, and engagement hub for all staff and students. The Living Pā aims to be one of the world's most environmentally responsible buildings, and will open in December 2024. You can read more about the Living Pā and its commitment to sustainability on page 10.



# PASIFIKA STUDENTS

Tālofa lava. Mālō ni. Kia orana. Mālō e lelei. Ni sa bula vinaka. Fakaalofa lahi atu. Halo olgeta. Ia orana. Kam na mauri. Gude tru. Kaselehlhie. Kia ora, and warm Pacific greetings.

Come and join our Pasifika community at Te Herenga Waka. Our friendly, supportive kainga will help you get the most out of your studies, make new friends, and enjoy your time here. Joining our community will be one of the best decisions of your life.

## Pasifika future-student advisers

Tapu Ki Tea Ve and Fa'aliga Leota, the Pasifika future-student advisers, are your first point of contact at the University. They can provide advice on university study, planning your programme, scholarships, admission, and support services available to Pasifika students that will help you achieve your academic goals.

- ✉ [tapu.vea@vuw.ac.nz](mailto:tapu.vea@vuw.ac.nz)
- ☎ 04 463 6670
- ✉ [faaaliga.leota@vuw.ac.nz](mailto:faaaliga.leota@vuw.ac.nz)
- ☎ 04 463 6673



## SUPPORT ON CAMPUS

### Pasifika Student Success

The Pasifika Student Success team is the University 'āiga (family) who supports you as you transition into tertiary study. The team fosters Pasifika learning and teaching communities in an environment that is culturally welcoming, safe, inclusive and focused on academic excellence, personal growth, and wellbeing.

✉ [pasifika-student-success@vuw.ac.nz](mailto:pasifika-student-success@vuw.ac.nz)

f [www.facebook.com/pasifikavictoriauniversitywellington](https://www.facebook.com/pasifikavictoriauniversitywellington)

@ [www.instagram.com/pasifikavu](https://www.instagram.com/pasifikavu)

### Pasifika faculty student support

There are Pasifika engagement advisers based in the faculties at the University. They provide holistic and advocacy support, one-to-one appointments, course-specific study sessions, exam preparations, Pasifika events, and learning and development workshops for domestic and international undergraduate and postgraduate students.

### Pasifika learning adviser

Te Taiako—Student Learning (see page 16) has a Pasifika learning adviser to support Pasifika students with study and writing skills.

### Library support

The Library has a Pasifika library navigator and Pasifika student liaison to assist Pasifika students.

## STUDENT GROUPS

The Pasifika Students' Council is a student representative group that consults and supports the University's Pasifika students. The council provides events for all Pasifika students to enhance their university experience.

There are several clubs for Pasifika students, including the:

- ▶ Cook Islands Students' Association
- ▶ Fijian Students' Association
- ▶ Melanesian Students' Association
- ▶ Niuean Students' Association
- ▶ Pacific Islands Commerce Students' Association
- ▶ Pasifika Law Students' Society
- ▶ Sāmoan Students' Association
- ▶ Tokelauan Students' Association
- ▶ Tongan Students' Association
- ▶ Tuvaluan Students' Association.

To join, go to the online clubs directory or attend the clubs days during the first week of Trimester 1.

i [www.wgtn.ac.nz/clubs](http://www.wgtn.ac.nz/clubs)



**FIND OUT MORE**





# INTERNATIONAL STUDENTS

Welcome, bienvenidos, 欢迎, bienvenue, selamat datang.

The University is home to international students from more than 100 countries. As an international student wanting to study at Te Herenga Waka, your first point of contact is Te Kahupapa—Wellington University International's (WUI's) office.

Our WUI team assists students with the application and enrolment process, and can answer any questions you have about your study options. We also host a specialised International Orientation programme and other events to help you settle into Wellington university life.



# SUPPORT

## International student support

The team at Te Haumiri—International Student Experience is dedicated to supporting international student success and provides a range of services to ensure students achieve their goals. We offer academic support as well as holistic support based on personal and cultural needs.

✉ [international-support@vuw.ac.nz](mailto:international-support@vuw.ac.nz)



## International students' association

The Victoria International Students' Association (V-ISA) is an independent student group that can support and advocate for you as an international student during your studies.

📍 [www.wgtn.ac.nz/recreation/clubs-and-societies/directory/v-isa](http://www.wgtn.ac.nz/recreation/clubs-and-societies/directory/v-isa)

# STUDENT GROUPS

There are several other cultural clubs for students with an international focus, including the:

- ▶ Cambodian Students' Association
- ▶ Chinese Students' Association
- ▶ German Club
- ▶ Indonesian Students' Association
- ▶ Japanese Students' Association
- ▶ Korean Association
- ▶ Latin American and Spanish Club
- ▶ Malaysian Students' Organisation
- ▶ Muslim Students' Association
- ▶ Taiwanese Students' Association
- ▶ Vietnamese Students' Association.

📍 [www.wgtn.ac.nz/clubs](http://www.wgtn.ac.nz/clubs)

# INTERNATIONAL ADMISSION

For information about admission requirements and the Foundation Studies programme for international students, see page 42.

The application procedure and deadlines described in this publication may differ for international student applications.

Check our website or get in touch with our team.

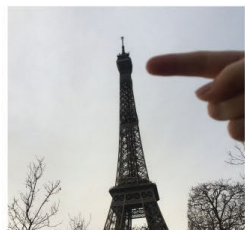
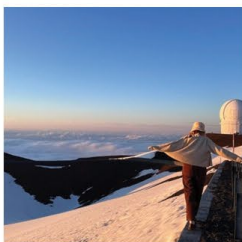
## Te Kahupapa—Wellington University International

☎ 0800 04 04 04

✉ [international@vuw.ac.nz](mailto:international@vuw.ac.nz)

📍 [www.wgtn.ac.nz/international](http://www.wgtn.ac.nz/international)





# LEADERSHIP AND STUDYING OVERSEAS

With two leadership programmes and an overseas exchange programme, the University offers many opportunities for you to develop leadership skills and engage with local, national, and global communities.

## OVERSEAS EXCHANGE

Rereao—Wellington Global Exchange gives you the opportunity to travel and study overseas while still progressing your degree. Immerse yourself in another culture and complete up to two trimesters of full-time study at one of our more than 140 partner universities around the world.

During your exchange, you will pay your normal tuition fees to Te Herenga Waka. Students eligible for StudyLink loans and allowances can continue to receive these while on exchange. We will help finance your trip with a grant of \$1,000, with a further \$1,000 available for eligible Te Puāo—Wellington International Leadership Programme participants. Additional scholarships for exchange are available from some partner universities and government organisations.

✉ [student-exchange@vuw.ac.nz](mailto:student-exchange@vuw.ac.nz)

📍 [www.wgtn.ac.nz/student-exchange](http://www.wgtn.ac.nz/student-exchange)





## SERVICE AND LEADERSHIP

Te Tohu Rauhi—Wellington Plus is the University's service and leadership development programme. It encourages you to connect with your community through volunteer and student leadership activities and benefit from workshops on leadership, social responsibility, and career development. Joining Te Tohu Rauhi—Wellington Plus is a great way to find out about events and opportunities. You will meet new people, have fun, and gain skills and practical experience.

The programme is designed to improve your employability and support your personal and professional growth. It is free, open to all students, and can complement your studies, interests, and future goals. Successful completion of the certificate or award level is acknowledged on your academic transcript. Get involved when you start at the University and try something new.

**i** [www.wgtn.ac.nz/wellington-plus](http://www.wgtn.ac.nz/wellington-plus)

## GLOBAL LEADERSHIP

Te Puāo—the Wellington International Leadership Programme is the University's award-winning global citizenship education programme. Equip yourself with an international and intercultural skill set to engage with the social, environmental, and economic challenges facing our world. Learn from a diverse range of academics, innovators, diplomats, and other students from all disciplines. Through seminars, events, and experiential activities, you can explore different ways of knowing and being, broaden your knowledge and experience of leadership, examine Aotearoa New Zealand's place in the world, and grow your personal and professional networks. The programme can complement any degree, is recognised on your academic transcript, and is free and open to all students.

Participants who wish to undertake a Rereao—Wellington Global Exchange (see opposite), a virtual international internship, or other virtual or mobility opportunities may be eligible to receive a Te Puāo—Wellington International Leadership Programme Global Leader grant of up to \$1,000.

**✉** [international-leadership@vuw.ac.nz](mailto:international-leadership@vuw.ac.nz)

**f** [www.facebook.com/vuwWILP](https://www.facebook.com/vuwWILP)

**i** [www.wgtn.ac.nz/international-leadership](http://www.wgtn.ac.nz/international-leadership)



# INFORMATION FOR WHĀNAU

University is an exciting time, full of changes from secondary school study. Your student's first year is important for setting up good study patterns to find success at university and to achieve their goals. Their growing independence means you will not need to be so hands-on anymore, but you can still help your student by:

- ▶ keeping in touch and being available to talk
- ▶ sending care packages
- ▶ encouraging them to get involved in all areas of university life
- ▶ guiding them to ask for help if needed—see page 16 for services.

## WHAT TO EXPECT AND HOW YOU CAN OFFER SUPPORT

### The first trimester

#### BEFORE

- ▶ It is in students' best interests to participate in New Students' Orientation (see page 18).
- ▶ You can encourage them to make the effort to get to know other students.

#### AT THE BEGINNING

- ▶ Students are required to study independently.
- ▶ They may worry about their learning or progress.
- ▶ Those who have moved to Wellington might feel homesick and face challenges adjusting to living in a new environment.

You can support them by:

- ▶ directing them to student services (see page 16)
- ▶ helping them plan a study routine
- ▶ encouraging them to meet their student success adviser and sign up to Te Taiako—Student Learning workshops.

### Six weeks in

- ▶ Students may struggle with their new environment or have doubts about their courses.
- ▶ They might feel pressure from workload and deadlines.
- ▶ They could feel isolated or lonely.
- ▶ Health or money concerns may arise.

You can support them by:

- ▶ prompting them to get learning advice—from tutors, their student success adviser, and workshops
- ▶ encouraging them to get holistic advice—they can speak to Te Ratonga Penapena Pūtea—Student Finance, Manawa Ora—Student Wellbeing, Mauri Ora—Student Health and Counselling, or Te Amaru—Disability Services
- ▶ reminding them they can speak to their residential adviser (RA) if they are living in a hall of residence
- ▶ suggesting they join a club, University Recreation Wellington, or attend on-campus events.

### Mid-trimester break

- ▶ Time for students to study without lectures, tutorials, labs, or workshops.
- ▶ They should plan for the rest of their trimester by rechecking course outlines.





## Assessments

- ▶ Students may experience self-doubt as final assessments approach.
- ▶ If they have exams or tests, this can cause stress, pressure, and worry.
- ▶ Possible health concerns may arise.

You can support them by:

- ▶ checking assessment details with them to keep track of what's due when
- ▶ encouraging them to attend assessment preparation workshops at Te Taiako—Student Learning
- ▶ helping them prioritise self-care—eating, sleeping, and exercising
- ▶ reminding them that they can seek confidential support at Mauri Ora—Student Health and Counselling.

## At the end

At the end of the first trimester, students should:

- ▶ celebrate their achievements and reflect on their experiences
- ▶ check their Trimester 2 courses
- ▶ get course advice from their student success adviser if they are adjusting their programme
- ▶ enjoy the mid-year break—catch up with friends and whānau.

**THERE WILL  
BE UPS AND  
DOWNS!**

MAY JUNE JULY

**FIND OUT MORE**





# WHAT UNIVERSITY STUDY WILL COST

Planning your finances early will save you some stress when you get to university. As well as your fees, you will need to budget for accommodation, transport, textbooks, and other expenses.

## FEES

Tuition fees are calculated on a per-point basis, so the amount you pay will depend on your choice of courses. Other fees of around \$1,134 per year cover student support services such

as careers guidance, counselling, financial advice, health services, student advocacy, student publications, and student representation. You must pay your fees in full or check your eligibility for fees-free study before courses start.

Domestic tuition fees for 2025 will be set in October 2024. International tuition fees for 2025 will be set in March 2024 and will be available from Te Kahupapa—Wellington University International's website (see page 25).



For questions about fees, or to make a payment, contact the student fees advisers.

- 📞 0800 04 04 04
- ✉️ [student-finance@vuw.ac.nz](mailto:student-finance@vuw.ac.nz)
- 🌐 [www.wgtn.ac.nz/fees](http://www.wgtn.ac.nz/fees)

## FEES-FREE TERTIARY STUDY

First-time tertiary students may be eligible for fees-free support. If you are a domestic student and have previously studied fewer than 60 points at tertiary level, go to [www.feesfree.govt.nz](http://www.feesfree.govt.nz) to confirm your eligibility for fees-free study. This support covers tuition, associated mandatory fees, and compulsory student service fees. It does not cover students' association fees, club memberships, course materials, and late fees. If you want to apply for a Student Allowance or the two non-fees components of a Student Loan—living costs and course-related costs—for 2025, you will still need to apply to StudyLink.

## HELP WITH PLANNING

The University's student finance advisers offer help with planning and managing your costs. Staff can also help with some questions related to your StudyLink applications. You can book an appointment or speak to a finance adviser by phone.

### Student finance advisers

- 📞 0800 04 04 04
- ✉️ [student-hardship@vuw.ac.nz](mailto:student-hardship@vuw.ac.nz)
- 🌐 [www.wgtn.ac.nz/financial-advice](http://www.wgtn.ac.nz/financial-advice)

## STUDENT LOANS AND ALLOWANCES

For information on Student Loans and Student Allowances, contact StudyLink directly.

### StudyLink

- 📞 0800 889 900
- 🌐 [www.studylink.govt.nz](http://www.studylink.govt.nz)



**\$6,000–\$9,000**

Average cost of domestic tuition fees per year

# SCHOLARSHIPS

Te Herenga Waka—Victoria University of Wellington is committed to providing scholarships across all levels of study from first year through to postgraduate level. Scholarships acknowledge high achievement and help remove the barriers to university study that exist for students facing hardship or disadvantage. Our scholarships can support you throughout your academic journey with us.

## SCHOLARSHIPS FOR SCHOOL LEAVERS

Our school-leaver scholarships have been developed to support and encourage students who embody the key attributes that the University values: excellence, leadership, diversity, sustainability, and commitment to community.

Offering much more than just financial assistance, our scholarships are designed to create communities of students who share the same ambitions, goals, backgrounds, and values.

We award hundreds of scholarships each year that will help make the transition to your life as a student easier.

Many of our school-leaver scholarships are named for a different type of pounamu (greenstone), a taonga for Māori. Pounamu can protect and act as a source of strength for those who possess it and for future generations.



 FIND OUT MORE



**Applications  
open in June  
and are due by  
2 September  
2024.**



## FIND A SCHOLARSHIP

There are a number of other scholarships available for first-year students. Check out our database for the most up-to-date and comprehensive list of scholarships available for study at Te Herenga Waka. Links to other scholarship opportunities can be found on our website.

**i** [www.wgtn.ac.nz/scholarships](http://www.wgtn.ac.nz/scholarships)



## WELLINGTON INTERNATIONAL EXCELLENCE SCHOLARSHIPS

These scholarships are available to high-achieving international students currently studying in New Zealand and planning to study for an undergraduate degree at the University. These tuition-fee scholarships are valued at up to \$20,000 over three years of study. The Wellington International Excellence Scholarship is available to international students only.

### Other scholarships for international students

The University also provides automatic and competitive scholarships for international students at different times of the year. For more information, check the scholarships page on our website.

**i** [www.wgtn.ac.nz/international-scholarships](http://www.wgtn.ac.nz/international-scholarships)





# ACCOMMODATION

Finding the right place to live in Wellington is as important as choosing the right course of study.

## HALLS OF RESIDENCE

The University provides accommodation options for students in 12 halls of residence, from single rooms to apartments, or something in between. First-year halls are all fully catered and prices include power and internet. All halls are within easy walking distance of our campuses (see map on inside back cover). We prioritise the wellbeing and safety of our resident community—you can expect a high standard of care while living in our accommodation that sets you up well for your studies. You'll be supported by our dedicated staff and have access to the University's range of academic support services, as well as counselling, health, and recreation services. Check out Te Kopanga—University Accommodation Wellington's website for more information about each hall of residence.

## How to apply for a hall

Apply online through Pūaha, our online self-service portal. You will also need to provide a confidential reference from your school. Check the accommodation website for application and key dates by scanning the QR code on the next page.

We recommend you apply as soon as possible as we start to make offers of accommodation from mid-September. Most offers are made by the end of October. If we still have rooms available, you can apply right up to move-in day in February.

You are guaranteed an offer of accommodation if you are awarded one of our school-leaver scholarships, provided you apply in time. See page 32 for more information on our school-leaver scholarships and how to apply for one.

When applying for accommodation, you must select your three preferred halls. We will do our best to place you in one of your preferred halls.



Catered halls	Single room weekly cost (\$)	Beds
Boulcott Hall	426	180
Capital Hall	490	320
Cumberland House*	448	227
Joan Stevens Hall	426	242
Katharine Jermyn Hall	494	390
Te Puni Village	498	398
Victoria House*	384	183
Weir House*	360	190

Self-catered halls	Weekly cost from (\$)	Beds
Education House	361	108
Everton Hall	262	194
Whānau Housing**	191	50
Whānau Mārama Apartments	350	116
Whare Hīnau—Kelburn Flats*	238	246

\*Halls with twin-share rooms available.

\*\*For students with knowledge of te reo Māori and tikanga Māori.

All fees quoted are based on 2024 costs. Prices may vary for 2025.

Note: Charges are applied to your account, accessed through your accommodation portal, in four weekly instalments (four weeks in advance). The first instalment is due before you move in.

## Visit a hall

You and your whānau are welcome to visit our halls to see what hall life is like. You can drop in on Open Day (see page 80 for details), book a tour online, or simply contact the hall that you would like to visit.



## OTHER OPTIONS

We can also help you find non-university accommodation—you may choose to board with a family, get a room in an existing flat, or set up your own flat or apartment with a group of friends. Contact us for assistance.

## ACCOMMODATION GUIDE

The *Accommodation Guide* is available in May. Copies are sent to your careers adviser, or you can request one directly from us by emailing [accommodation@vuw.ac.nz](mailto:accommodation@vuw.ac.nz)

## CONTACT US

Te Kopanga—University Accommodation  
Wellington

📞 04 463 5896

✉ [accommodation@vuw.ac.nz](mailto:accommodation@vuw.ac.nz)



# PLANNING AHEAD

## CHOOSING YOUR SCHOOL SUBJECTS

Making informed subject choices at secondary school will keep your options open for university study. All our degrees have recommended school subjects, which we list on the degree pages (see pages 46–77). In most cases, introductory courses are available if you do not have enough background knowledge—but to make your transition as easy as possible, it is best to take the recommended subjects in Year 13.

We recommend taking four or five approved subjects for University Entrance in Year 13. Credits you gain in Years 11 and 12 will also count towards numeracy and literacy requirements (see pages 38–42).

Scan the QR code below for more details.



## YEAR 12 STUDENTS

Your academic performance in Year 12 really does count; the University's school-leaver scholarships are offered based on your Year 12 results (see page 32).

See below for information about STAR courses in Year 12.

## STAR COURSES

The STAR programme provides the opportunity for Year 12 and 13 students to take 100-level courses while still at school. Taking a STAR course can help you get a head start on your university journey—you can explore your academic interests, earn points towards your future degree at Te Herenga Waka, and better prepare yourself for university study.

We offer a group of courses specially designed to be taken while still at secondary school. You will be able to complete these courses by distance, and the University will support you with an online preparation course. You can take any other 100-level course as part of the STAR programme, but many courses have in-person attendance requirements. You will need to be 16 years or older by the time your course begins. You will need to have met the literacy and numeracy requirements for NCEA University Entrance or equivalent (see page 39) and have a high level of achievement at NCEA Level 2 or equivalent.

Study what you love at Te Herenga Waka. Create a programme of study to include subjects you enjoy, and develop a specialised understanding of your chosen fields. Learn more about our degrees and subjects on the following pages.



**FIND OUT MORE**





## CHOOSING A DEGREE

Choosing your degree and major(s) can be complicated. Will you enjoy your study? Will you be good at it? Will you find the job of your dreams? Everyone is different—some people study for a degree to help them get a particular job and others want to keep their options open and study something they are fascinated with. There is no right way to approach this decision; just make sure you choose what you will enjoy spending time on—you will always do better studying what you enjoy.

## WHERE CAN MY DEGREE TAKE ME?

The University's Careers and Employment website has career development information to help you on your way right from your first year of study. You can learn about making career decisions, what you can do with your degree, preparing for work, employment during study and after you graduate, and adapting to the world of work.

Scan the QR code below for more details.



## MAKING CAREER DECISIONS

Making good decisions about your future starts with knowing yourself. Think about your skills, your interests, and the values that are important to you. Chat to your school's careers adviser to get started. Interactive tools are available online that can get you thinking broadly about what careers might suit you.

Check out the University's Careers and Employment website to find out more about the types of jobs and career paths available to you based on degrees and areas of study that interest you.

**i** [www.wgtn.ac.nz/careers](http://www.wgtn.ac.nz/careers)





# ADMISSION

This section applies to New Zealand and Australian citizens and permanent residents. If you are an international student, see page 42.

To be accepted automatically into any degree at Te Herenga Waka, you will need to:

- ▶ achieve University Entrance
- ▶ fulfil any other degree-specific requirements (such as a performance audition)
- ▶ have your identity and residency details verified by the university, if required
- ▶ apply by the deadline.

For future students, Pūaha is where you go to apply for admission, search for scholarships, and explore accommodation options. You'll be able to start your application for admission at any time and return to it once you're ready to submit. Once you've submitted your application, you'll be able to keep up to date with your application progress. You'll

be notified of the acceptance of your application, which will allow you to then enrol in your chosen courses on Pūaha from September 2024.

If you are a school leaver, we recommend you apply for admission by 1 November 2024 and complete your enrolment by 1 December 2024 to ensure a place in your preferred courses.

You will normally need to be at least 16 years of age by the application closing date.

For more information about how to apply, scan the QR code.

 **FIND OUT MORE**





## STUDENTS APPLYING WITH NCEA

These requirements apply to students who are currently in Year 13 or on a gap year.

### University Entrance

University Entrance through the National Certificate of Educational Achievement (NCEA) has the following requirements.



## NCEA LEVEL 3 CERTIFICATE

14 credits  
at Level 3 in  
an approved  
subject

14 credits  
at Level 3 in  
an approved  
subject

14 credits  
at Level 3 in  
an approved  
subject

### LITERACY

10\* credits at Level 2  
or above (5 in reading,  
5 in writing)

### NUMERACY

10\* credits at Level 1  
or above

\*From specified lists of standards. Go to [www.nzqa.govt.nz](http://www.nzqa.govt.nz)

## NCEA approved subjects for entrance to university

- ▶ Accounting
- ▶ Agriculture and Horticulture
- ▶ Biology
- ▶ Business Studies
- ▶ Calculus
- ▶ Chemistry
- ▶ Chinese
- ▶ Classical Studies
- ▶ Construction and Mechanical Technologies
- ▶ Cook Islands Māori
- ▶ Dance
- ▶ Design (Practical Art)
- ▶ Design and Visual Communication
- ▶ Digital Technologies and Hangarau Matihiko
- ▶ Drama
- ▶ Earth and Space Science
- ▶ Economics
- ▶ Education for Sustainability
- ▶ English
- ▶ French
- ▶ Geography
- ▶ German
- ▶ Hauora\*
- ▶ Health Education
- ▶ History
- ▶ History of Art
- ▶ Home Economics
- ▶ Indonesian
- ▶ Japanese
- ▶ Korean
- ▶ Latin
- ▶ Mathematics/Pāngarau
- ▶ Media Studies
- ▶ Music Studies
- ▶ New Zealand Sign Language
- ▶ Ngā Mahi a te Rēhia\*
- ▶ Ngā Toi\*
- ▶ Ngā Toi Ataata\*
- ▶ Ngā Toi Puoro\*
- ▶ Painting (Practical Art)
- ▶ Photography (Practical Art)
- ▶ Physical Education
- ▶ Physics
- ▶ Printmaking (Practical Art)
- ▶ Processing Technologies
- ▶ Psychology
- ▶ Religious Studies
- ▶ Sāmoan
- ▶ Science/Pūtaiao
- ▶ Sculpture (Practical Art)
- ▶ Social Studies
- ▶ Spanish
- ▶ Statistics
- ▶ Te Ao Haka
- ▶ Technology/Hangarau
- ▶ Te Reo Māori
- ▶ Te Reo Rangatira
- ▶ Tikanga ā-Iwi\*
- ▶ Tongan

\*Only students engaged in learning and achievement derived from Te Marautanga o Aotearoa are eligible to be awarded these subjects.

## FIND OUT MORE



[www.nzqa.govt.nz](http://www.nzqa.govt.nz)

## STUDENTS APPLYING WITH CAIE

### University Entrance

University Entrance through Cambridge Assessment International Education (CAIE) consists of:

- ▶ a minimum of 120 points on the New Zealand Tariff at A or AS level from any syllabus groups, which are broadly equivalent to those in the list of approved subjects for NCEA
- ▶ a D grade or better in syllabuses from at least three different syllabus groups (excluding Thinking Skills).

For the literacy and numeracy requirements you will need:

- ▶ an E grade or better in any one of AS-level Language and Literature in English, English Language, and Literature in English
- ▶ a D grade or better in IGCSE or GCSE Mathematics.



## STUDENTS APPLYING WITH IB

### University Entrance

University Entrance through International Baccalaureate (IB) consists of the full IB diploma (24 points minimum).

## DISCRETIONARY ENTRANCE

### University Entrance

To be considered for Discretionary Entrance, you must have achieved the University Entrance literacy and numeracy standards described in the NCEA section on page 39, or the equivalent from Cambridge Assessment International Education or International Baccalaureate.

- ▶ You will normally need to have an NCEA Level 2 Certificate with at least a Merit endorsement.
- ▶ Each Discretionary Entrance application is considered on its own merits and is in no way guaranteed. If you are applying directly from Year 12, you will need to have very strong support from an adviser at your school. Your adviser's confidential recommendation will support your capability, maturity, motivation, and readiness to undertake degree-level study.
- ▶ If you are applying after an overseas exchange, you will need to provide written evidence of your study overseas and an adviser's recommendation as above. You will need to have completed Year 12 NCEA Level 2 or equivalent before you went on your exchange.
  - ▶ Discretionary Entrance is not available for international students.





## OTHER FORMS OF ADMISSION

There are full details on other forms of admission on our website.

These include:

- ▶ qualification assessment at entrance level—for students with University Entrance from outside New Zealand or a completed relevant Level 4 qualification from a recognised New Zealand tertiary provider
- ▶ qualification assessment above entrance level—for students who have already studied at degree or diploma level (Level 5 or above)
- ▶ Special Admission—for students who are over 20 and do not hold a recognised University Entrance qualification
- ▶ Provisional Admission—a restricted programme of study for students who do not achieve UE but meet certain academic requirements.

**i** [www.wgtn.ac.nz/admission](http://www.wgtn.ac.nz/admission)

## IF YOU DO NOT GAIN ADMISSION

If you are not successful in gaining admission to Te Herenga Waka—Victoria University of Wellington, you may wish to consider undertaking study at another tertiary institution and reapplying later. If you have special circumstances or questions about admission to the University, contact the Future Students team.



## TOHU MĀORITANGA

This qualification is designed to provide a foundation in Māori culture and society, Māori customs and practice, Māori language, and academic and study skills in a culturally responsive learning environment.

The diploma takes one year of full-time study and you may be able to cross-credit up to 60 points to a Bachelor of Arts degree or 40 points to any other Bachelor's degree upon successful completion. You will be required to submit documents, including a personal statement and a CV, and participate in an interview to determine your suitability.

**i** [www.wgtn.ac.nz/tohu-maoritanga](http://www.wgtn.ac.nz/tohu-maoritanga)

## PASIFIKA PATHWAYS

The Diploma in University Studies (Pasifika Pathways) (DipUniPASP) is a one-year full-time pre-degree diploma programme designed to help you transition to university. Taught in a community learning environment, the programme will help you explore different career opportunities and get the skills and knowledge to succeed. Successfully completing this diploma allows you to apply for undergraduate degrees at Te Herenga Waka, even if you don't meet University Entrance requirements. Upon completion, you will be able to cross-credit up to 60 points towards a Bachelor's degree.

To apply for this programme, you'll need to provide a personal statement and letter of recommendation, and take part in an interview.

**i** [www.wgtn.ac.nz/pasifika-pathways](http://www.wgtn.ac.nz/pasifika-pathways)

## INTERNATIONAL STUDENTS

International students have separate procedures for admission and first-year enrolment.

If you are an international student at school in New Zealand studying towards NCEA, CAIE, or IB, you will need to gain University Entrance as described on the previous pages. Gaining University Entrance meets the academic and English-language requirements for university admission.

If you do not gain University Entrance, you may consider either staying on at school to gain University Entrance or enrolling in the University's Certificate in Foundation Studies, taught by UP International College. Successful completion of the programme will give you academic entrance to all the University's undergraduate degrees. Some degrees have additional requirements.

If you have not studied at a New Zealand secondary school, you will need to meet the University's academic and English-language requirements.

Further details are on the University's international website. All international students will need to apply to Te Kahupapa—Wellington University International (see page 25 for contact details or go to [www.wgtn.ac.nz/international-apply](http://www.wgtn.ac.nz/international-apply)).

**i** [www.wgtn.ac.nz/international](http://www.wgtn.ac.nz/international)

### Certificate in Foundation Studies

This intensive programme is designed to give international students the academic skills and English language practice needed to gain entry to university and to succeed in their studies. The programme has four intakes per year and six-, eight-, 12-, and 18-month course options depending on your academic background and level of English. Apply for this programme through UP International College.

**i** <https://partnerships.up.education/wellington>





# PLANNING YOUR FIRST YEAR

## HOW A DEGREE WORKS

### Courses

Courses are blocks of work that are taught over one or two trimesters—they're sometimes referred to as 'papers'. In your first year, you will take 100-level courses. The number of courses you take in a year will vary depending on how many points each course is worth.

Some degrees have core courses that all students must complete.

### Points

Each course is typically worth 15 or 20 points. To pass a course, you need to complete a number of different assessments throughout the trimester. When you pass the course, you earn points towards your degree.

To complete your degree, you will need to gain 360 points over three years of full-time study. Degrees in Law, Engineering, and Midwifery take four years of full-time study to complete as 480 points are required for these degrees. Regardless of which degree you study towards, you will aim to complete approximately 120 points each year.

### Majors

A major is the main subject you specialise in. For example, you might do a Bachelor of Science with a major in Computer Science. Each year you will take courses required for your major(s).

### Double majors

A double major allows you to specialise in two subjects within one degree—an example of this could be a Bachelor of Arts with a double major in History and French. A double major requires the same number of points as a degree with only one major and should not take any extra time.

Some of our degrees allow you to take a second major from another degree—for example, you can do a Bachelor of Science with a double major in Physics and Film.

### Minors

In some of our degrees, you can take a minor. A minor is similar to a major, but requires fewer courses, particularly in your second and third years. Having a minor is optional in most degrees.

### Electives

You can take elective courses if you have space in your degree programme. Elective courses can be from other subject areas you are interested in.

### Conjoint and double degrees

Conjoint and double degrees allow you to complete two degrees in a shorter amount of time as courses can be cross-credited. For example, a conjoint Bachelor of Laws and Bachelor of Arts could be completed within five years.

Note that not all degrees can be done conjointly.



**FIND OUT MORE**



# DEGREE EXAMPLE

Below is an example of a Bachelor of Psychology with a double major in Psychological Science and Criminal Justice and Psychology.





Shelly Bay Community Library model by Danbie Bong for ARCI 212 Architecture Design Integration I /  
Te Whakakotahitanga o ngā Tikanga Whakarākei Whare I.

# ARCHITECTURE

Studying Architecture gives you the knowledge to design the places and spaces we use every day, understand cultural and environmental issues, and solve problems using the latest materials, technologies, and design systems.

At Te Herenga Waka, you can study key disciplines that are at the forefront of the built environment industry, all under one roof.

The Bachelor of Architectural Studies (BAS) is a three-year undergraduate degree that gives you the knowledge and practical skills you need to be an innovator in the study, design, and construction of buildings, natural ecosystems, parks, urban spaces, or residential and commercial interiors.

You can major in Architecture, Architecture History and Theory, Interior Architecture, or Landscape Architecture. You can also include courses from other disciplines as elective courses. The BAS with majors in Architecture, Interior Architecture, and Landscape Architecture can be taken with a specialisation in Māori Design and Environments.

The University's Te Kura Waihanga—School of Architecture, based at Te Aro campus in the creative Cuba Street area, has an internationally recognised reputation as a leading tertiary

provider in the built environment. You will have access to world-class facilities and exhibition spaces and state-of-the-art tools and software, and will learn from academic staff who are experts in their fields. Their extensive research, experience, and collaboration with local and international practitioners contribute to the first-class education you will receive.

Successful graduates will have a thorough grounding in design, technology, environmental science, history, theory, and urban design. Graduates are equipped for careers in the design or building industries, or for continued study at postgraduate level, where we have a range of Master's programmes to choose from.

 FIND OUT MORE





## KEY FEATURES

- ▶ Three years of full-time study.
- ▶ All majors share the same first-year courses.
- ▶ A portfolio is not required.
- ▶ University Entrance (or equivalent) is the only entry requirement.
- ▶ Selection into the second year is based on academic performance in the first year.
- ▶ If you want a postgraduate qualification, you can continue into a two-year Master's programme. Entry is based on academic performance in the BAS.
- ▶ The BAS majoring in Architecture is your first step on the pathway to becoming a registered architect. Your next step is to continue to the Master of Architecture (Professional). That is an approved qualification in the process for achieving professional registration with the New Zealand Registered Architects Board and joining the New Zealand Institute of Architects.
- ▶ The BAS majoring in Landscape Architecture is your first step on the pathway to becoming a registered landscape architect. Your next step is to continue to the Master of Landscape Architecture, which is an approved qualification in the process for becoming a professional landscape architect.

## MAJORS

**Architecture** is a diverse discipline that explores the built environment as an expression of culture. Studying Architecture will ultimately give you the knowledge required to shape our built environment within complex cultural, historical, and environmental contexts, and solve design problems using the latest materials, technologies, and design systems.

**Architecture History and Theory** is a theory-based major encompassing concepts broader than the professionally oriented Architecture specialisation. It focuses on the critical, historical, political, and social contexts of how and why we design buildings, cities, and spaces.

**Interior Architecture** is a challenging discipline that deals with our interaction with spaces—inside, outside, and in between. You will explore the connection between people and their physical and cultural environments, and challenge existing definitions of design, space, and suitability. You will develop, design, and redesign various social, cultural, commercial, residential, institutional, and virtual spaces.

**Landscape Architecture** is about investigating and envisaging better design solutions for outdoor spaces that address contemporary challenges related to climate change, urbanisation, and sustainability. It brings together design with art, culture, nature, and science to create engaging and functional spaces. You will develop an understanding of issues relating to landscape processes, place, scale, strategy, synthesis, and time.

## SCHOOL SUBJECTS

A broad selection of school subjects is useful. These might include subjects such as Biology, Design, Design and Visual Communication, Digital Technologies, Ecology, English, History, Mathematics, Physics, or Practical Arts, and any science or technology.

## POTENTIAL CAREERS

As well as working as architects, interior designers, and landscape architects, graduates are suited to a range of careers, including 3D visualisation and modelling, academic education and research, archiving, building construction management, exhibition display and installation, film-set design, furniture design, landscape restoration and conservation retail design, museum research, park and recreation design and management, publishing, real-estate broking, social and environmental policy, software design, urban and regional planning, urban design, and virtual interiors design.

 [www.wgtn.ac.nz/careers](http://www.wgtn.ac.nz/careers)

# ARTS

Explore your passions through a rich variety of subjects and develop the creativity and flexibility needed in a changing job market. Choose the Bachelor of Arts (BA) from Te Herenga Waka.

The BA subjects we offer investigate Aotearoa New Zealand's cultural identity, history, and origins, and the nature of other societies. The humanities subjects, such as languages, literature, film, history, media studies, music, and theatre, explore what it means to be human. Social sciences subjects such as criminology, cultural anthropology, and sociology examine how humans interact with each other.

Our teaching is student focused and helps you develop flexibility, creativity, imagination, and critical and analytical thinking—all attributes New Zealand needs in its workforce. Our BA also offers a Wellington Faculty of Humanities and Social Sciences Internship course that provides direct contact with Wellington employers. Our teachers are top scholars in their disciplines; they will become your academic mentors, inspiring and challenging you to discover your capabilities and strive for excellence.

Our location in New Zealand's 'creative capital' enables those all-important connections with politics, the arts, heritage, and industry.

Ranked in the top 1 percent in the world, and also ranked by the Performance-Based Research Fund (a funding system rewarding research excellence and research-based teaching) as first in New Zealand across a range of humanities and social science (or BA) subjects, our BA is New Zealand's most flexible. We encourage you to explore up to three majors in your first year, so you can discover your passions and develop a broad base of learning before deciding where to specialise.



## KEY FEATURES

- ▶ Three years of full-time study.
- ▶ There is a strong focus on the humanities, creative arts, languages, and social sciences.
- ▶ You may include a second major in your BA from another of the University's undergraduate degrees.
- ▶ You can include a minor in an undergraduate subject area from the BA or other degrees such as the Bachelor of Commerce, Bachelor of Communication, Bachelor of Design Innovation, Bachelor of Health, Bachelor of Music, or Bachelor of Science.
- ▶ You may combine a BA with study for another degree as a conjoint degree programme. Because some courses can be credited to both degrees, it is possible to complete two three-year degrees in four to five years.
- ▶ Activities such as exchanges, field trips, internships, overseas study tours, peer mentoring, and summer scholarships will give you the opportunity to develop a range of highly employable skills.

## MAJORS

- ▶ Art History
  - ▶ Asian Studies
  - ▶ Chinese
  - ▶ Classical Studies
  - ▶ Criminology
  - ▶ Cultural Anthropology
  - ▶ Data Science\*
  - ▶ Development Studies\*
  - ▶ Economics\*
  - ▶ Education
  - ▶ Educational Psychology\*
  - ▶ English Literature
  - ▶ Film
  - ▶ French
  - ▶ Geography\*
  - ▶ German
  - ▶ Greek
  - ▶ History
  - ▶ International Relations
  - ▶ Japanese
  - ▶ Latin
  - ▶ Linguistics
  - ▶ Māori Resource Management
  - ▶ Māori Studies
  - ▶ Mathematics\*
  - ▶ Media Studies
  - ▶ Modern Language Studies
  - ▶ Music
  - ▶ Pacific Studies
  - ▶ Philosophy
  - ▶ Political Science
  - ▶ Psychological Science \*
  - ▶ Public Policy\*
  - ▶ Religious Studies
  - ▶ Sāmoan Studies / Matā'upu tau Sāmoa
  - ▶ Sociology
  - ▶ Spanish
  - ▶ Teaching English to Speakers of Other Languages (TESOL)
  - ▶ Te Reo Māori
  - ▶ Theatre
- \*BA majors taught by faculties other than the Wellington Faculty of Humanities and Social Sciences.

## MINORS

- ▶ Creative Writing
- ▶ Gender and Sexuality Studies
- ▶ New Zealand Sign Language (NZSL)
- ▶ Popular Music Studies
- ▶ Social Policy

## OTHER SUBJECT

- ▶ Academic and Professional Writing

## SCHOOL SUBJECTS

Any BA major can be started from an introductory level in the first year, although, for some subjects, it is useful to have studied the relevant subject at secondary school.

## POTENTIAL CAREERS

Three years after graduating, 92 percent of arts graduates will be employed or undertaking further study (Careers NZ Key Information Set for Students). Bachelor of Arts graduates are employed in every part of the workforce, whether it be as an aid worker, artist, criminologist, diplomat, journalist, librarian, market researcher, policy analyst, social worker, teacher, or translator. A BA is suited to hundreds of careers.

A BA provides a key set of skills that are highly valued by employers, including critical thinking, problem-solving, relationship building, self-management, teamwork, verbal communication, and writing. In addition, you can take advantage of our work-related learning opportunities.

 [www.wgtn.ac.nz/careers](http://www.wgtn.ac.nz/careers)



 **FIND OUT MORE**







# BIOMEDICAL SCIENCE

Whether it's old diseases that are resisting treatment, new diseases that are emerging, or changes in human lifestyles and environments, biomedical scientists explore the relationships between humans, health, and disease—an exciting and rapidly advancing field of study.

The Bachelor of Biomedical Science (BBmedSc) is a three-year undergraduate degree that will give you a solid understanding of molecular and cell biology, along with the research skills you need to start your journey towards a career in biomedical science.

Te Herenga Waka's BBmedSc focuses on human genetics, mechanisms of disease, the way drugs work and are designed,

and the fundamentals of molecular and cell biology. The BBmedSc can be the first step towards a career in medicine and other health-related careers, including genetic counselling or pharmaceuticals.

The University is a leader in Biomedical Science, ranked first nationally for research quality in this field. Our lecturers carry out research with leading organisations, including the Institute of Environmental Science and Research; the Malaghan Institute of Medical Research—Aotearoa's largest private medical research institute, located at the University's Kelburn campus; the Medical Research Institute of New Zealand; and Te Kāuru—Ferrier Research Institute.

## KEY FEATURES

- ▶ Three years of full-time study.
- ▶ In your first year, you will study a core programme of human biology, human disease, cell biology, chemistry, computer science, psychology, and statistics.
- ▶ In your second and third years, you will build on this foundation, studying courses specific to your chosen major. Course options include biochemistry, cell biology, genetics, immunology, microbiology, pathology, pharmacology, and physiology.
- ▶ Three subjects are offered as majors: Human Genetics, Molecular Pathology, and Molecular Pharmacology and Medicinal Chemistry.
- ▶ You can major in one or two subjects. Your first major must be one of the three BBmedSc subjects, and your second major can be from the BBmedSc or another undergraduate degree, such as the BSc.
- ▶ You can also choose to minor in a subject from the BBmedSc or another undergraduate degree.\*

\*You can't minor in Biology, Biotechnology, or Cell and Molecular Science if you are doing a BBmedSc.

## MAJORS

**Human Genetics** covers all aspects of the science of human genetics, including the study of the human genome and the treatment of diseases and illnesses of a genetic origin. If you're interested in areas such as ageing, genetic counselling, human fertility, and syndromes and diseases of a genetic origin, this is the major for you.

**Molecular Pathology** introduces students to the molecular basis of disease. Molecular Pathology focuses on the changes that occur in cells, tissues, and organs within the body when a human becomes ill. You'll learn about clinical biochemistry, forensic science, immunology, microbiology, and the relationship between health and disease.

**Molecular Pharmacology and Medicinal Chemistry** focuses on all aspects of chemistry in relation to our bodies, including modern chemical methods for the synthesis of drugs and how they are used to treat disease. This major will suit you if you're interested in a major that combines both biology and chemistry.

## SCHOOL SUBJECTS

NCEA Level 3 or equivalent Chemistry is strongly recommended.

## POTENTIAL CAREERS

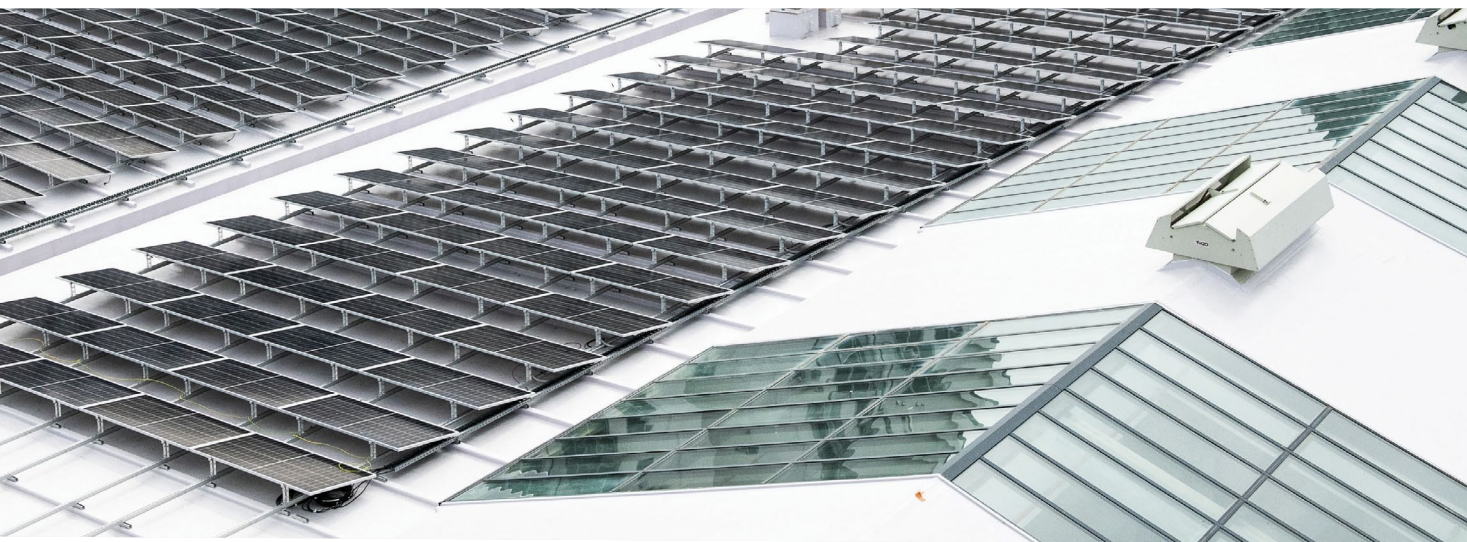
You'll graduate with skills in analytical thinking, communication, numeracy, and organisation, which will set you up for employment in a range of roles. Our graduates are working in government agencies, hospitals, law and patent firms, research organisations, and in science communication and teaching roles. If you'd like to continue with postgraduate studies in areas such as medicine or laboratory science, this degree is a great first step on your career path.

 [www.wgtn.ac.nz/careers](http://www.wgtn.ac.nz/careers)



 FIND OUT MORE





# BUILDING SCIENCE

Any building you enter has a complex history—from concept to design to construction. Study Building Science to understand this history and help create efficient, sustainable, and safe buildings, and meet the needs of their occupants now and in the future.

Te Herenga Waka is an international leader in building science, and our graduates are in high demand with the growing needs of Aotearoa's building and construction industry.

Building science is closely aligned with architecture and engineering. It examines the way buildings perform and encompasses project management from the design phase through to delivery and post-occupancy, ensuring comprehensive oversight of a building's entire life cycle and its performance. You will gain expertise in the science, technology, and economics of creating buildings and an

understanding of architecture. You will learn how to organise teams, plan the construction process, and manage contractors and construction sites.

The Bachelor of Building Science (BBSc) will teach you to look for continued improvements in the building process. Research in this area focuses on how to ensure buildings are comfortable, dry, warm, and well lit, as well as delivered on time and on budget.

Building science bridges the gaps between architecture, engineering, testing, and building research. It is crucial to minimise the built environment's impact on the natural world. You will be able to concentrate on the management of building projects by majoring in Project Management or gain knowledge of sustainability's role in engineering economical and effective building systems by majoring in Sustainable Engineering Systems.



## KEY FEATURES

- ▶ Three years of full-time study.
- ▶ Majors are available in Project Management, Sustainable Engineering Systems, or both.
- ▶ A portfolio is not required.
- ▶ In your first year, you will study alongside students in the first year of the Bachelor of Architectural Studies, maximising your exposure to all aspects of built environments and increasing your awareness of the potential directions you could take.
- ▶ The BBSc will fulfil the academic requirements for professional membership of the New Zealand Institute of Building.
- ▶ The BBSc is recognised as an acceptable qualification for becoming a licensed building practitioner, which is a compulsory requirement for employment in certain roles in the building profession.

## MAJORS

You will take core courses in construction, environmental science, management, structures, and systems, while majoring in either Project Management, Sustainable Engineering Systems, or both.

**Project Management** focuses on building-project delivery mechanisms and human and material management systems for procuring large and complex infrastructure, engineering, and building projects.

**Sustainable Engineering Systems** leads to expertise in the assessment, design, fabrication, science, and simulation of technical systems in various environmental and natural resource projects and buildings.

*Extruded Drawing, wood and cardboard architectural model for SARC 221 Building Materials and Construction / Te Waihangā me ngā Momo Rauemi, by Fabian Johnson.*



## SCHOOL SUBJECTS

There are no required subjects for studying Building Science, but a broad selection of school subjects is recommended. These might include Art, Design, Design and Visual Communication, English, and any Science or Technology.

## POTENTIAL CAREERS

Building Science graduates have a combination of theoretical knowledge and practical experience that meets an urgent need for building science professionals. They find careers in diverse areas including building research, computer simulation and visualisation work, design of lighting, heating, and acoustics, local body management, local government, planning, project management, property development, sustainable engineering systems design, and technical consultancy.

**i** [www.wgtn.ac.nz/careers](http://www.wgtn.ac.nz/careers)





# COMMERCE

If you're interested in a career in the exciting world of commerce and want expertise in business and the business of government, then a Bachelor of Commerce (BCom) is the degree for you.

Business is one of the world's moving forces, shaping societies, connecting people around the globe, and improving wellbeing and living standards. Business creates jobs and opportunities, promotes ideas, and fosters creativity, innovation, and entrepreneurship. Wherever people are at work, in public organisations or private business, they depend on business, financial, and managerial expertise to keep their world in motion.

The BCom is taught at the Wellington School of Business and Government, located in downtown Wellington opposite Parliament, in the nation's commercial, political, and leadership hub. In addition to its own teaching staff, the Wellington

School of Business and Government uses the expertise of professionals working at the highest levels of business and government, and Wellington's private and public sector organisations provide a wealth of research opportunities.

The Wellington School of Business and Government is one of an elite group worldwide to be accredited by the world's most highly recognised international business accreditation agencies. These accreditations show that our qualifications are recognised internationally, meeting high standards in terms of content, assurance of learning for students, and a global perspective.



## KEY FEATURES

- ▶ Three years of full-time study.
- ▶ Core courses designed to give you a good foundation in different areas of business. These must be completed as part of the BCom.
- ▶ With Aotearoa New Zealand's largest selection of commerce majors to choose from, you can major in one or more subjects and may include one or two minors.
- ▶ You have the option to include a second major from another degree programme; for example, the Bachelor of Arts or the Bachelor of Science.
- ▶ To become a professional accountant in New Zealand, you need to qualify for membership of Chartered Accountants Australia and New Zealand. You can meet most of the academic requirements for this, and those for overseas professional bodies, by completing a BCom with a major in Accounting.

## MAJORS

- |  |                          |
|--|--------------------------|
| ▶ Accounting   | ▶ Information Systems    |
| ▶ Actuarial Science                                  | ▶ International Business |
| ▶ Commercial Law                                     | ▶ Management             |
| ▶ Data Science                                       | ▶ Marketing              |
| ▶ Economics  | ▶ Public Policy          |
| ▶ Finance  | ▶ Taxation               |
| ▶ Human Resource Management and Employment Relations | ▶ Tourism Management     |

## MINORS

- |   |                                   |
|---|-----------------------------------|
| ▶ Banking                                       | ▶ Econometrics                    |
| ▶ Business Ethics and Sustainability Management | ▶ Innovation and Entrepreneurship |

Any major subject can also be taken as a minor.

## SCHOOL SUBJECTS

Useful subjects to study at school include Accounting, Business Studies, Economics, English, History, Mathematics, and Statistics.

## POTENTIAL CAREERS

The knowledge and skills you learn from a BCom will prepare you for a range of careers in business, finance, public policy, and many other fields, including jobs in accounting, auditing, banking, economics, human resource management, information systems, international business, marketing, product management, share broking, strategic analysis, and tax consulting.

**i** [www.wgtn.ac.nz/careers](http://www.wgtn.ac.nz/careers)







# COMMUNICATION

Study in New Zealand's centre of information and government to gain the specialist and transferable expertise in communication required for a range of future career options.

In today's information-saturated society, communication plays a formidable role in shaping and reflecting our civic, creative, cultural, industrial, political and social world. This dynamic sector requires employees who are agile and innovative in the face of changing communication technologies. With Te Herenga Waka's Bachelor of Communication (BC), you will gain the skills and knowledge to analyse, develop, and expand the potential of communication in a range of industries and organisations.

Our Wellington location puts us close to New Zealand's government and public sector and non-governmental organisations (NGOs), as well as arts organisations and the commercial sector. All these organisations need to be able to communicate effectively to a range of audiences. No other university in Aotearoa can prepare you for such a variety of communications-related jobs.

The BC at our university is interdisciplinary; the diversity of the subjects offered reflects the widespread nature of the communications sector within a New Zealand and globalised context.

A key focus of the degree is applied theory, which combines research rigour with practical relevance for the workplace. You will finish your degree with an applied communication project.

## KEY FEATURES

- ▶ Three years of full-time study.
- ▶ A focus on communication subjects, with a view to employment in sectors such as the creative industries, government, journalism, marketing, NGOs, and public relations.
- ▶ You will have to complete the requirements for one major and one complementary minor or major as well as the core communication courses. Note that if you choose to study for a complementary major rather than a complementary minor, you will finish your degree with a double major. This may take longer to complete than the standard six trimesters for a single major degree.

## MAJORS AND MINORS

- |   |  |
|---|--|
| <ul style="list-style-type: none"><li>▶ Intercultural Communication<ul style="list-style-type: none"><li>▶ Any language major or minor listed in the BA regulations</li><li>▶ Asian Studies</li><li>▶ International Business</li><li>▶ Linguistics</li><li>▶ Teaching English to Speakers of Other Languages</li></ul></li><li>▶ Linguistics<ul style="list-style-type: none"><li>▶ Any language major or minor listed in the BA regulations</li><li>▶ Cultural Anthropology</li><li>▶ Data Science</li><li>▶ Intercultural Communication</li><li>▶ Political Science</li><li>▶ Psychological Science</li></ul></li></ul> | <ul style="list-style-type: none"><li>▶ Literary and Creative Communication<ul style="list-style-type: none"><li>▶ Creative Writing (minor only)</li><li>▶ English Literature</li><li>▶ Film</li><li>▶ Theatre</li></ul></li><li>▶ Marketing Communication<ul style="list-style-type: none"><li>▶ Any language major or minor listed in the BA regulations</li><li>▶ Asian Studies</li><li>▶ Health Promotion</li><li>▶ Information Systems</li><li>▶ International Business</li><li>▶ Māori Studies</li><li>▶ Media Studies</li><li>▶ Pacific Studies</li></ul></li></ul> |
|---|--|

- |   |  |
|---|--|
| <ul style="list-style-type: none"><li>▶ Media Studies<ul style="list-style-type: none"><li>▶ Communication Design</li><li>▶ Design for Social Innovation</li><li>▶ Film</li><li>▶ Marketing</li><li>▶ Media Design</li><li>▶ Popular Music Studies (minor only)</li><li>▶ Theatre</li></ul></li></ul> | <ul style="list-style-type: none"><li>▶ Political Communication<ul style="list-style-type: none"><li>▶ International Relations</li><li>▶ Political Science</li><li>▶ Public Policy</li></ul></li><li>▶ Science Communication<ul style="list-style-type: none"><li>▶ Any of the subjects listed in the Bachelor of Science or Bachelor of Biomedical Science regulations, except Environmental Science and Science in Society</li></ul></li></ul> |
|---|--|

## SCHOOL SUBJECTS

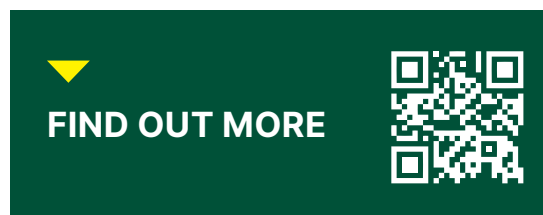
Any BC major can be started from an introductory level in the first year. For some subjects, it is useful to have studied the relevant subject at school.

## POTENTIAL CAREERS

With our BC, you will graduate as an engaged and effective communications expert with the ability to think critically and creatively in a sphere characterised by huge influence and rapid change.

The BC will prepare you for a career in the creative industries, government, internal communications positions, media or public relations, non-governmental organisations and social advocacy groups, policy development, or the public sector. The University's strong relationships with key players in the communications sector mean that the expertise you acquire through the BC will be relevant and attractive to employers.

 [www.wgtn.ac.nz/careers](http://www.wgtn.ac.nz/careers)



# DESIGN INNOVATION

Design is all around us. It influences and reflects the way we experience the world. Te Herenga Waka's Bachelor of Design Innovation (BDI) is a flexible degree that enables you to tailor your studies to suit your individual interests and chosen career path.

Te Kura Hoahoa—School of Design Innovation is New Zealand's cutting-edge option for launching a career in design. While developing the skills and knowledge that the industry currently demands, you will also be pushing the limits and forging the future of design thinking and practice.

Based in the vibrant and lively heart of Wellington's cultural centre, the Cuba Street precinct, the School is ideally located for opportunities to engage with the Wellington design industry. State-of-the-art facilities and academic staff internationally recognised as leaders in their field mean that you will be inspired and prepared to fulfil your potential through your design education.

We lead the way in our critical approach to design thinking and new technologies. We challenge the status quo, whether that be in increasing equity and accessibility in our communities, 3D scanning and multi-property 3D printing, or the ever-expanding fields of animation, gaming, and visual effects where emergent mobile applications, smart objects, and virtual reality are creating exciting and expansive opportunities for creativity and enterprise.

We believe design and design education are enriched through interaction with other disciplines. You can include a minor in your degree in areas as diverse as Computer Science, Cultural Anthropology, Film, Māori Studies, Marketing, Media Studies, Music, Pacific Studies, and Psychology.

COOK n' RUN by Te Tia Nui Corpe, Lucine McColgan, Angus Muir, and Benjamin Pilbrow, for MDDN 321 Game Design II / Hoahoa ā-Kēmu Rorohiko II.



## KEY FEATURES

- ▶ No portfolio is required for entry.
- ▶ Three years of full-time study.
- ▶ Selection into the second-year programme is based on academic performance in the first year.
- ▶ There is opportunity for interdisciplinary study—minors are available in other subjects that are offered at the University.
- ▶ If you want a professional design qualification, you can continue into the Master of Design (MDes), Master of Design Innovation (MDI), Master of Design Technology (MDT), or Master of User Experience Design (MUXD).

## MAJORS

**Animation and Visual Effects** blends creativity with emerging technologies, enabling students to bring stories to life in exciting, contemporary ways. Learn skills in 3D and 2D animation, storytelling, and visual effects, as well as virtual-reality and augmented-reality design, game design, and other screen-based disciplines. After your BDI, you can pursue careers in animation and visual effects for film, virtual reality, and game design, or deepen your knowledge and continue your studies with the one-year Master of Design Technology or other postgraduate study.

**Communication Design** focuses on the effective use of words, images, visual media, and graphic design to communicate with impact. A BDI in Communication Design prepares students for one of the largest sectors within the global design workforce. Potential careers include art director, concept artist, graphic designer, graphic novelist, illustrator, typographer, visual storyteller, and more. You can also continue to the Master of Design Innovation or other postgraduate study.



**Design for Social Innovation** is an exciting and emergent field of design study that recognises the increasing impact that design has on our everyday lives. It pushes beyond existing design thinking and practice and explores how social design can support healthy, positive, and just futures. Design for Social Innovation prepares students for the newest wave of roles within the global design workforce as communication designers, creative directors, design consultants, design researchers, design strategists, service designers, and user-experience, customer-experience, or interaction-experience designers. You can also continue to the Master of Design Innovation or other postgraduate study.

**Fashion Design Technology** responds to the needs and possibilities of the twenty-first century through innovation across an extended fashion landscape. You will learn about the product-service system through circular design, critical thinking and creative problem-solving, design communication, design construction, pattern making, speculative design, and user testing. Fashion Design Technology provides students with a base for any career in fashion design, in areas such as fashion media, fashion services, narrative and costume design, product development, sustainable design, textile design, and wearable technology. You can also continue to the Master of Design Innovation or other postgraduate study.

**Game Design** introduces the basic concepts of game design and explores the varied skills of game development. You will learn to design video games with a multidisciplinary approach and gain knowledge in gaming fundamentals, art, animation, coding, game history, interaction design, new technologies, software, and storytelling. Game Design prepares students for careers in the game development industry in areas such as asset production, game design, game programming, game testing, and related creative industries while also providing a pathway into the Master of Design Technology or other postgraduate study.

**Industrial Design** is the profession of creating new products that shape the world and our interactions. New emerging technologies, digital manufacture, and a sustainable focus mean design is changing fast, requiring a creative mindset and experimentation to imagine the future.

A BDI in Industrial Design will prepare you for rapidly developing roles in the healthcare and medical, homeware, recreation, furniture, and entertainment industries. You can also continue to the Master of Design Innovation or other postgraduate study.

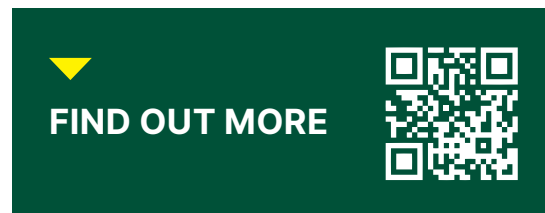
**Interaction Design** is a human-centred discipline that delves into a range of physical and digital systems and interfaces, all aimed at enhancing various aspects of human life. This includes everything from tangible consumer products to digital interactions such as apps, games, and websites. After completing a BDI, you'll be equipped to excel in fields where user experience plays a pivotal role. This includes areas such as design, education, government, healthcare, and software as a service (SaaS). You can also continue to the Master of Design Innovation or other postgraduate study.

**Media Design** is focused on the near-future possibilities of computation and digital media. It explores the capabilities of our increasingly digital lifestyles and how they are impacted by automation, data collection, programming languages and, increasingly now, artificial intelligence techniques. After completing a BDI, you can pursue careers in animation and special effects, communication and marketing, exhibition design, motion graphics, and web and mobile design. You can also continue to the Master of Design Innovation, the Master of Design Technology, or other postgraduate study.

 [www.wgtn.ac.nz/careers](http://www.wgtn.ac.nz/careers)

## SCHOOL SUBJECTS

Suggestions for subjects to study at school include, but are not limited to, Design, Design and Visual Communication, Digital Technologies, English, Media Studies, Practical Arts, and Technology.



# EDUCATION AND TEACHING

## EDUCATION

Learn about education from many angles—from early childhood development to understanding youth issues to politics in education. Discover the fascinating relationships between education, culture, and society. You'll gain the knowledge and skills to understand and analyse our education system. Take a critical view of the way we educate our young people and study education theory, practice, and policy issues. You can study Education as a major within the Bachelor of Arts—see page 48 for more information.

## EDUCATIONAL PSYCHOLOGY

Study human development and learning with a focus on psychology. Explore how children and young people learn and develop. Understand how to support children and young people who are experiencing social, emotional, or learning difficulties by using skills gained in psycho-educational assessment, evaluation, mediation, and intervention. You can study Educational Psychology as a major within the Bachelor of Arts and the Bachelor of Psychology—see pages 48 and 74 for more information.

## TEACHING ENGLISH TO SPEAKERS OF OTHER LANGUAGES (TESOL)

Our TESOL programme is specifically designed to provide sound academic preparation for TESOL teachers and for teachers of other languages. You will learn to describe language in a way that helps second language learners understand it. You will understand the psychological processes of learning and using a second language, and how to provide effective learning opportunities for language learners. You can study TESOL as a major within the Bachelor of Arts—see page 48 for more information.

## TEACHING

Teachers help future generations develop knowledge, skills, understanding, and positive dispositions. Early childhood teachers are among the most influential members of a community, and teaching at primary or secondary level is a rewarding career where you can demonstrate your creativity and communication skills. For entry into any teaching programme, you will need to be assessed by the Wellington Faculty of Education as being suitable for the teaching profession. Applicants whose first language is not English are required to meet the English proficiency requirements of the Teaching Council of Aotearoa New Zealand.

### Early childhood teaching

Studying early childhood education at Te Whānau o Ako Pai—the Wellington Faculty of Education will give you the skills to take on this responsibility with confidence and to enjoy the excitement, creativity, and fun of working with young children.

The Bachelor of Education (Teaching) Early Childhood is a full-time degree that takes three years to complete and aims to develop teachers who can become leaders in their profession. Students can choose to complete the BEd(Tchg)EC programme as a centre-based or a campus-based student. The programme includes a total of 24 weeks of teaching experience over the three years in a range of early childhood services, including education and care centres and kindergartens.

Subjects to study at school should include a balance of mathematics, sciences, and essay-based subjects such as English, History, and Geography. Creative subjects such as Design, Music Studies, and Practical Arts are also useful.



Graduates will be prepared to teach in a range of early childhood education settings and be eligible for provisional teacher registration with the Teaching Council of Aotearoa New Zealand. Other career opportunities include work in administration, education policy, and research.

## Primary and secondary teaching

Our postgraduate primary and secondary teacher education qualifications aim to be transformative and provide the expertise you need to excel as a leader of learning in diverse educational contexts. If you are interested in primary teaching, there are no requirements for your undergraduate degree subjects, but you could consider a major in Education or in a subject that can be taught at school. If you want to be a secondary teacher, you need appropriate-level study in one or more teaching subjects in your undergraduate degree.

All programmes are recognised by the Teaching Council of Aotearoa New Zealand and graduates are eligible for provisional teacher registration. Graduates are qualified to teach in New Zealand schools. The combination of specialist subject knowledge and teaching skills is particularly attractive to employers, not only in schools but also in other areas including administration, education policy, and research. A teaching qualification is highly transferable to other employment contexts.

## GRADUATE DIPLOMA OF TEACHING

The Graduate Diploma of Teaching (Primary) and the Graduate Diploma of Teaching (Secondary) are one-year full-time programmes offered on campus or online and include 16 weeks of teaching experience in schools. There are campus-based and online study options, and the programmes begin and end with one week of compulsory attendance on campus. There is an option to complete the Graduate Diploma of Teaching (Secondary) over two years. To gain entry to the programme, you must have completed a three-year Bachelor's degree in a relevant learning area.

## MASTER OF TEACHING AND LEARNING

The Master of Teaching and Learning (Primary) or (Secondary) is an integrated internship model combining theory and practice, giving you the opportunity to study primary or secondary teacher education while based in a school for the equivalent of two days each week. You will have 16 weeks of full-time experience in a school. To gain entry to the programme, you must have completed a three-year Bachelor's degree in a relevant learning area with a grade point average (GPA) of at least a B in your final year of study.

 **FIND OUT MORE**







# ENGINEERING

Do you want to make the next major breakthrough in technology, help save a life, or build the next big game? Are you creative? Do you like to solve problems and build things? Do you try to understand how things work and wonder how you can make them better?

If so, our Engineering programme is for you—come to Te Herenga Waka and study with innovative people. The University's Bachelor of Engineering with Honours (BE(Hons)) focuses on digital technology that helps you design and implement real-world systems. Right from the start of this degree, you will gain core engineering skills and learn to apply them to the design and development of modern technology.

Engineers are some of the most sought-after people in the modern world. You will graduate as a skilled professional and be able to choose from many exciting and well-paid careers.

## KEY FEATURES

- ▶ Four years of full-time study, with a total of 480 points and the requirements for one major subject.
- ▶ Learn through projects and teamwork, and develop the practical skills needed for design and development.

- ▶ You will complete 800 hours of employment or work experience—400 hours in an approved engineering environment, and 400 hours of your own choosing. This forms a vital part of the degree.

## MAJORS

**Cybersecurity Engineering:** Cybersecurity is at the forefront of modern technology that focuses on protecting and safeguarding computers, networks, and data from unauthorised access and attacks. You will learn how to recognise these security threats and gain the practical skills needed to prevent them. Your study will include a range of technology-based courses and interdisciplinary courses that include aspects of ethics, law, policy, risk management, and social and human factors. The Cybersecurity programme will give you the technical and communication skills needed to excel in this rapidly growing profession. Graduates can pursue diverse careers, including as analysts, consultants, governance risk and compliance experts, penetration testers, security engineers, and security managers.

**Electrical and Electronic Engineering:** Electronics is an integral part of nearly all the products we use, from smart gadgets to internet routers. Such systems provide us with devices that have

ever-increasing functionality. Electrical and electronic engineers design the intelligence needed for modern electronic devices, power systems, renewable energy systems, robotics, and signal processing. Electrical and Electronic Engineering graduates can go on to work in a range of sectors such as the energy industry, robotics, and emerging start-up tech companies.

**Software Engineering:** Computer software controls many aspects of the modern world, ranging from safety-critical systems (airlines, hospitals, and power plants) to everyday online search engines and artificial intelligence systems. Computer software includes networks, mobile devices, and next-generation interactive techniques. Software engineering drives many of today's most exciting and innovative companies such as Apple, Dropbox, Trade Me, Wētā FX, and Xero. Software makes these sophisticated systems possible and, in doing so, opens new opportunities for collaboration. Software engineers are highly sought-after graduates because they provide the core skills on which our modern world is built. Graduates can pursue a range of careers including multimedia programming, mobile app development, and game or web development.

**i** [www.wgtn.ac.nz/careers](http://www.wgtn.ac.nz/careers)

## RELATED MAJORS

In the Bachelor of Science (see page 76), students can take related majors, including:

- ▶ Actuarial Science
- ▶ Artificial Intelligence
- ▶ Computer Graphics and Games
- ▶ Computer Science
- ▶ Data Science
- ▶ Electronic and Computer Systems
- ▶ Mathematics
- ▶ Statistics.

**i** [www.wgtn.ac.nz/bsc](http://www.wgtn.ac.nz/bsc)



## SCHOOL SUBJECTS

Recommended subjects to study at school include Digital Technologies, Maths, Science, Statistics, and Technology. If you're planning to study Electrical and Electronic Engineering, we recommend studying Calculus and Physics.

Prospective students wishing to enrol in any of the BE(Hons) majors or in a Bachelor of Science in Electronic and Computer Systems (ELCO), Computer Science (COMP), or Computer Graphics and Games (CGRG) should ideally have 16 NCEA Level 3 credits in Mathematics, or 12 Achievement Standard credits in NCEA Level 3 Mathematics excluding the statistics standards 91580, 91581, 91582, 91583, 91584, or an equivalent mathematics background. All students are expected to have experience using computers, although the programme does not assume any background in computer programming.

**FIND OUT MORE**





# GLOBAL STUDIES

Become a leader of positive change, growth, and problem-solving with our diverse and flexible Bachelor of Global Studies (BGS). Studying in Wellington, you will connect with change-makers and be ready to launch an exciting career, locally or internationally.

Globalisation and the things it brings with it—good, bad, and ugly—dominate the way we think and interact in the world today.

From politics, law, and human rights to health and wellbeing, the environment and sustainability, and business, we understand that the personal is political and that local decisions can have a big impact in the wider world.

The Bachelor of Global Studies is a qualification that takes you across disciplines and allows you to focus on different aspects of the issues at the heart of our globally connected world, while developing your knowledge of te ao Māori and Aotearoa's place in the global context.



## KEY FEATURES

- ▶ Three years of full-time study.
- ▶ In your first year, explore the different subjects and approaches covered in the degree, with courses in Global Studies, Māori studies, intercultural communication, and languages.
- ▶ From your second year, you will create your individualised degree by selecting at least two minors.
- ▶ Students must take at least 60 points' worth of language courses (three courses). There are options for all levels of language learners, from absolute beginners to those with many years of experience.

## MINORS

**Area and Cultural Studies:** Take a look at the history and contemporary issues facing specific areas, the cultures within those areas, and those cultures' diaspora.

**Cultures and Identities:** Discover the history, and investigate the impact, of changing global attitudes towards identity—gender, sexuality, indigeneity, and culture.

**Environment and Sustainability:** Look at the global cultural impacts of climate change and the breakdown of the environment and examine worldwide attempts to deal with the big environmental issues facing our world.

**Ethical Leadership and Intercultural Communication:** Learn the pleasures and pitfalls of communicating across cultures, and how to lead effectively when working with people from varied cultural backgrounds.

**Global Health and Wellbeing:** A globalised world includes one where some have access to medicines and treatments while others do not. Discover the roots of these inequalities and how they can be changed.

**Globalisation, Movement, and Change:** Look at the way that people have moved—and continue to move—around the world, examining the issues and impacts of migration, global communities, and cultures.

**Human Rights, Justice, and Peace:** Find out how we can create peace and preserve human rights across nations with different historical legal systems and approaches to law and justice.

**World Affairs and Organisations:** Examine the intersection of capitalism and culture. Find out what's required to run an international business and the potential impacts of a globalised economy on developing nations.

## SCHOOL SUBJECTS

The BGS can be started from an introductory level in the first year. All languages can be studied from beginner's level, and students who have the appropriate NCEA Level 3 requirements (or equivalent) may be admitted directly into 200-level language courses.

## POTENTIAL CAREERS

A Bachelor of Global Studies will help prepare graduates for leadership roles and to make valuable contributions locally and globally across a range of fields, including foreign affairs and diplomacy, government, non-governmental organisations, policy and research, public and private international organisations, teaching, and tourism. Students will also develop transferable skills including an ability to work effectively in teams, effectively communicate with people from different backgrounds, define problems, and think critically.

 [www.wgtn.ac.nz/careers](http://www.wgtn.ac.nz/careers)





# HEALTH

The health sector in Aotearoa New Zealand is undergoing significant change and needs people who are agile and passionate about improving health and wellbeing in our communities.

The Bachelor of Health (BHLth) gives students a foundational understanding of health services, health policy and strategy, the social aspects of health, Māori health, Pacific health, and how health issues affect diverse populations in New Zealand and around the world. This degree will prepare you for a range of careers in the health sector that you may not have considered yet. If you want to support better health and wellbeing for diverse populations, this is the degree for you.

There are four majors to choose from in the BHLth, and you can shape your personal interests by also taking courses offered by other faculties at the University such as Education, Māori Studies, Psychology, or Public Policy. Over the course of your degree, you will learn about ethical practice and working collaboratively with other health sector professionals while developing the core knowledge and skills necessary to make

improvements to the health and wellbeing of individuals, communities, and populations.

The BHLth has a strong focus on the health and wellbeing of Māori as well as Pacific peoples and will equip you with the skills and expertise to help improve equity for these populations. With Wellington at the heart of New Zealand and the seat of government, the University is a great place to study health and wellbeing so you can make a real difference to health in New Zealand and internationally.

## KEY FEATURES

- ▶ Three years of full-time study.
- ▶ In the first year, you will study a core programme of health and wellbeing, health policy and services, statistical analysis, and introductory human biology.
- ▶ In the second and third years, there are three further core courses to advance your understanding of health and wellbeing, including either a research project or an internship relevant to your major.

- ▶ Four majors are offered, and you may include a second major or a minor from within the BHLth programme or another undergraduate degree.
- ▶ The conjoint programme makes it possible to combine a BHLth with another degree in a minimum of four years.

## MAJORS

**Health Informatics:** Health informatics is the application of information technology to the business of healthcare. The aim is to improve healthcare through the effective management and utilisation of health information, data, and systems, and to use the knowledge gained to solve problems and make decisions about healthcare and services. All this leads to a more affordable, flexible health system and better health outcomes for people.

**Health Promotion:** Do you want to use your skills to advocate for others? Do you want to develop action plans that increase equity within populations and help people to improve their health and wellbeing? The Health Promotion major is designed to create work-ready graduates who understand health issues and can design and implement promotion initiatives to combat these.

**Health Psychology:** In Health Psychology, you will study how our social world shapes physical and psychological health and wellbeing. Health psychology examines how society shapes health alongside interpersonal relationships and individual thoughts, feelings, and behaviour. You might explore the challenges people experience when it comes to caring for their health or learn about the importance of resources to enhance health and wellbeing for individuals, families, and communities.

**Population Health, Policy and Service Delivery:** When it comes to developing health policy and planning health services, it is essential we know about the current and future health needs of diverse populations. Population Health takes a broad perspective of the various factors that influence the health of different populations over time, provides tools to measure health outcomes and understand underlying factors, and examines the application of this knowledge to develop actions or policies that will lead to real and lasting improvements for the health and wellbeing of communities.

## INTERNSHIP

In the third year of the BHLth, you will have the option to complete HLWB 302 Health Internship. This is a limited-entry course that gives you the opportunity to participate in 70–80 hours' unpaid work with a public sector agency, private sector establishment, or non-governmental organisation, with a focus on health and wellbeing. In the past, students have completed internships at organisations such as Bee Healthy Regional Dental Service and Sport New Zealand Ihi Aotearoa.

## SCHOOL SUBJECTS

There are no prerequisites for the BHLth. However, there are some subjects that might help you in your studies, including Biology, English, Health Education, Home Economics, Māori and Indigenous Studies, Physical Education, Physics, Science, Social Studies, and Statistics.

## POTENTIAL CAREERS

Graduates from the programme will be able to promote and advocate for healthy lifestyles and apply their knowledge of the health sector to a range of tasks and roles. There are opportunities to work in governmental agencies such as Manatū Hauora (the Ministry of Health), Te Aka Whai Ora (the Māori Health Authority), and Te Whatu Ora (Health New Zealand) or in public health organisations, community services, and the private sector in roles such as a health educator, health information manager, health IT developer, health manager, health policy analyst, health promotion practitioner, health researcher, health service designer, and Māori or Pasifika health promoter.

 [www.wgtn.ac.nz/careers](http://www.wgtn.ac.nz/careers)







# LAW

Law is about relationships and our connections to each other. Our culture, economy, and society, our family ties, and our international allegiances all exist within a legal framework.

Our Law students learn how society is governed by law, and how laws are made to solve problems and communicate ideas. By examining legal texts and case studies, students are able to examine the relationships between people, techniques, and principles.

We teach Law by the Socratic method, in which Law lecturers ask students questions about the course content during lectures and use these answers to explore key points. This type of discussion-based learning is ideal preparation for a career in

law as students are encouraged to communicate ideas, think independently, and challenge legal principles.

Graduates with a Bachelor of Laws (LLB) contribute to every aspect of life in New Zealand, whether they practise as lawyers or work in business, the community, or government.

Housed in Wellington's historic Government Buildings, Te Herenga Waka's Faculty of Law is located at the hub of New Zealand law making, opposite Parliament and close to the central business district, courts, and research libraries. This remarkable environment attracts top staff and students from around the world.

## KEY FEATURES

- ▶ The LLB is a four-year undergraduate degree. Most students combine the LLB with another degree, which takes approximately five and a half years of full-time study (though it can be done in five years with careful planning).
- ▶ Students may enrol in the first year of an LLB as long as they have a university entrance qualification or meet the requirements of another admission type. Students do not need to take an entrance exam for this qualification or to have studied any specific subjects before enrolling. Selection into the second year is based on academic performance in the three first-year Law courses.
- ▶ Our courses reflect the University's capital-city status and the Faculty of Law's research strengths in criminal, commercial, contract, government, Indigenous, intellectual property, international, and public law.
- ▶ To be eligible to practise law in New Zealand, Law graduates must complete a practical professional legal studies course, often called 'profs'. A profs course usually takes several months to complete after students have completed their undergraduate studies. Two organisations offer this training in New Zealand. The Faculty of Law can advise you about this.

## SCHOOL SUBJECTS

Subjects to study at school include those you enjoy, those that are essay-based, and those that encourage analytical thinking such as Art History, Classics, Economics, English, Geography, History, Mathematics, Music, Physics, and languages.

  
**FIND OUT MORE**



## POTENTIAL CAREERS

A Law degree can lead to a range of careers by giving students skills in communication, problem-solving, analysis, and research. Graduates who work in legal practice in New Zealand and around the world specialise in areas such as commercial law, criminal law, family law, international law, litigation, and mediation. However, our graduates work in a variety of areas and are not limited to only working in legal practice, finding success in academia, business, creative arts, the community, and government (for example, the Crown Law Office and the Ministry of Foreign Affairs and Trade).

 [www.wgtn.ac.nz/careers](http://www.wgtn.ac.nz/careers)



# MIDWIFERY

Give back to your community and build a meaningful career as you help to bring new life—and new parents—into the world. Our research-informed Bachelor of Midwifery (BMid) prepares you for a rewarding career as a midwife.

The BMid is a comprehensive 480-point degree with a four-year structure that helps you balance home life, work, and study. Successful completion of the degree and the National Midwifery Examination will enable you to practise within the Midwifery Scope of Practice.

As a student of our Bachelor of Midwifery, you'll be learning through lectures, labs, simulated clinical situations in our simulation suite at Wellington Regional Hospital, and clinical learning experiences in hospitals and out in the community with real midwives, women, and pregnant people.

In the first year, you'll be taught by a range of experts, completing foundation courses in biology, biomedical science, chemistry, education, and health psychology, and two introductory midwifery practice courses. The remaining courses focus on midwifery theory and midwifery practice.



# KEY FEATURES

- ▶ Four years of full-time study.
- ▶ 25 compulsory courses.
- ▶ 2,400 hours of clinical learning experience.
- ▶ Draws on expertise from across the University in biology, chemistry, human development, and health psychology.
- ▶ Graduates are eligible to complete the National Midwifery Examination to practise as midwives in New Zealand.

# SCHOOL SUBJECTS

In addition to the University Entrance requirements on page 39, you will need to achieve the following (or equivalent):


Level 2	Level 3
A minimum of 16 credits at Level 2 in Biology	A minimum of 18 credits at Level 3 in Biology, Chemistry, or Physics
A minimum of 16 credits at Level 2 in Chemistry or Physics	A minimum of 16 credits at Level 3 in an English-language rich subject (such as Art History, Classics, Economics, English, Geography, History, or Media Studies)
A further 16 credits at Level 2 in another subject	A further 16 credits at Level 3 in two NCEA University Entrance approved subjects

If you do not think you meet the entry requirements, we encourage you to get in touch with us early to discuss a plan for entering the programme. You may be admitted on successful completion of a Level 4 bridging programme for health-related degrees or on demonstrated ability to study at degree level, such as graduate status.

# POTENTIAL CAREERS

Midwives support parents, babies, and their families through pregnancy, birth, and for up to six weeks following the birth. Their responsibilities include regular check-ups with the pregnant woman/person and monitoring of baby development, prescribing common pregnancy and postpartum medications, organising referrals for tests (such as ultrasounds) and to specialists, labour and delivery support, monitoring the baby's development after birth, and general advice and support for new parents.

Graduates of the BMid programme will be positioned to take their place in the healthcare workforce as registered midwives, either employed by hospitals or other maternity care providers or self-employed.

 [www.wgtn.ac.nz/careers](http://www.wgtn.ac.nz/careers)



**FIND OUT MORE**





# MUSIC

From clubs, stages, and concert halls to studios and cinemas, music-making at the New Zealand School of Music—Te Kōkī (NZSM) spans an exciting creative spectrum. The Bachelor of Music (BMus) programme offers you in-depth training in many performance traditions and styles, inspiring composition and music technology environments, and broad options for the academic study of music, including popular, electronic, and film music.

The NZSM offers opportunities unparalleled in New Zealand. It has strong links with the New Zealand music community and to diverse music specialists from all over the globe. Staff and artist teachers are internationally recognised performers, composers, sonic artists, and researchers, including members of the New Zealand Symphony Orchestra, New Zealand String Quartet, Te Kōkī Trio, Stroma contemporary music ensemble, and the Rodger Fox Big Band. Activities and opportunities for students range from performing with the NZSM choir or the Indonesian gamelan ensembles, to making and playing traditional Māori instruments, to hearing their soundtracks played by a live orchestra in the NZSM Film Scoring Contest.

Masterclasses and workshops are given by leading international performers, and resident and visiting composers and scholars are featured at weekly workshops and forums. Facilities include Steinway pianos, a fine collection of historical instruments, several excellent concert rooms, and well-equipped recording and electronic music studios.

Create, discover, and experience music of all kinds at the NZSM.

## KEY FEATURES

- ▶ Three years of full-time study.
- ▶ The BMus offers majors in Classical Performance, Instrumental/Vocal Composition, Jazz Performance, Music Studies, and Digital Music and Audio Production. Places in Performance programmes are by audition. The audition application form, audition requirements, and due dates are at [www.wgtn.ac.nz/nzsm-audition](http://www.wgtn.ac.nz/nzsm-audition)
- ▶ You can commence a BMus in Music Studies or Digital Music and Audio Production with no formal study of music and take a Music Theory course during your first year. For other BMus programmes, Grade 5 music theory (ABRSM, Trinity Guildhall, or AMEB) is recommended. Further information is at [www.wgtn.ac.nz/music-theory](http://www.wgtn.ac.nz/music-theory), including information about NZMEB theory requirements.
- ▶ If you want a broader degree, the Bachelor of Arts (BA) in Music is another option (see page 48). If you enjoy pursuing a range of interests, it is possible to take a conjoint degree combining a BMus and a BA.

## MAJORS

**Classical Performance** offers tuition in interpretation, repertoire, style, and technique for all orchestral instruments, piano, voice, harpsichord, organ, and selected baroque instruments. You will be involved in a variety of solo and ensemble activities, including chamber music, opera, and orchestral performances.

**Digital Music and Audio Production** lets you blend your musical passions with state-of-the-art technology. From recording, mixing, and film sound, to synthesis, immersive audio, and creating custom-designed software and hardware instruments, you will learn how to craft sound and shape your music in your own way.

**Instrumental/Vocal Composition** teaches you how to develop musical ideas into substantial, attention-grabbing works, notate music professionally, write for instruments idiomatically, and orchestrate imaginatively. There is also a specialisation in film scoring available, in which you will learn from leading New Zealand film composers.

**Jazz Performance** offers classes in combo and big band performance, improvisation, jazz theory, composition/arranging, and jazz history. As well as instruction in any of the standard jazz instruments (including voice), you will take part in ensemble performances such as big band, combos, jazz guitar ensemble, and jazz vocal ensemble. A studio wind and brass option is available for students wanting to develop skills in both jazz and classical performance.

**Music Studies** embraces the study of many genres of music and encourages you to think and write about them from different perspectives. Specialisations are offered in Ethnomusicology, Jazz Studies, and Musicology, or you can choose not to specialise. Courses cover diverse areas including European art music, film music, jazz history, Māori waiata, Pacific music, and popular music.

## MINORS

- Composition
- Digital Music and Audio Production
- Performance
- Popular Music Studies

## SCHOOL SUBJECTS

Recommended subjects to study at school include Art History, Classical Studies, English, History, Music Studies, Music Theory, and performing arts. Some courses require prior knowledge of music theory. Pathways that do not require prior knowledge or learning in music theory are also available.

## POTENTIAL CAREERS

A BMus can lead to a career as a professional musician, a composer, or a teacher of music, or to careers in arts management, broadcasting, film, and media. A BMus also provides training in skills that are desired by employers and transfer to a range of non-music careers. Such skills include leadership, creativity, collaboration, organisation, critical and analytical abilities, and written and verbal communication, among many others. Postgraduate study options at the NZSM, such as the Master of Fine Arts (Creative Practice) and the Master of Music Therapy, are closely aligned with professional career pathways.

 [www.wgtn.ac.nz/careers](http://www.wgtn.ac.nz/careers)







# PSYCHOLOGY

Help address some of the biggest issues facing the world today—study towards the Tohu Paetahi Mātai Hinengaro—Bachelor of Psychology (BPsyc) in Wellington.

When you study Psychology with us, you'll learn the skills to be part of positive, transformative change. You'll be learning from staff who are leading voices in areas such as brain sciences, crime prevention and rehabilitation, mental health, and psychology and culture.

The programme is led by staff from Te Kura Mātai Hinengaro—the School of Psychology, which is among the top 150 globally (2023 QS World University Rankings). Our staff are leading researchers of both fundamental and applied psychological science—you'll be taught by people at the top of their game.

Alongside the BPsyc's required Psychological Science major, you can also select a second complementary major, which lets you tailor the degree to suit your passions and career goals. Our majors cover everything from the physiological functions of the brain and its impact on wellbeing, to the ways we can use technology and artificial intelligence to understand human behaviour, to how people interact with the criminal justice system.

## KEY FEATURES

- ▶ Three years of full-time study.
- ▶ The Psychological Science major is required for the Bachelor of Psychology, and is made up of 12 courses covering a range of key topics in psychology.
- ▶ You can choose a second complementary major in a more specialised area of psychology.
- ▶ The Psychological Science major is also available as a major in the Bachelor of Arts or Bachelor of Science—choose the degree that aligns best with your interests and career goals.
- ▶ All our core courses incorporate mātauranga Māori, ensuring you boost your competence, cultural awareness, and social responsibility in the context of Te Tiriti o Waitangi.

## MAJORS

**Psychological Science:** Psychological Science is the required major in the Bachelor of Psychology and is also offered as a major in the Bachelor of Arts and Bachelor of Science. In this major, you'll get an overview of many areas within psychology and investigate why people think, act, and feel the way they do. This major will provide you with the skills you need to work in a range of organisations. You'll graduate equipped for roles that involve data analysis, communication, and collaboration skills and require a good understanding of people and relationships. Some examples include in communications, disability support, marketing, or youth engagement, or in the business and ICT sectors in software testing, user-centred design, or training.

**Brain Sciences and Mental Health:** This major focuses on the role of the brain and central nervous system in supporting psychological health and wellbeing, and you'll combine specialised psychology courses with those from chemistry, biology, and health. This major is a good first step if you're interested in a career in the public health sector, with role options including as a clinical or health data manager, laboratory or research assistant, mental health or disability support worker, or public and mental health policy analyst.

**Cognitive Science:** Cognitive Science explores human cognition, including processes such as decision-making, language, memory, and perception. You'll combine specialised

psychology courses with those from artificial intelligence, computer science, linguistics, and philosophy. Cognitive scientists often work in roles that bridge these topics, and are employed in artificial intelligence, data science, interaction design, user experience, and other design applications.

**Criminal Justice and Psychology:** When you study Criminal Justice and Psychology, you'll learn to understand Aotearoa's justice system, as well as the fundamentals of criminology, forensic psychology, and the development of antisocial behaviour. You'll consider how economic, political, and socio-cultural factors influence the justice system, and graduate with the knowledge and skills to pursue a variety of careers—from working with people as a probation officer, through to research or policy roles within government or community organisations.

**Educational Psychology:** Educational Psychology teaches you how to best help children and young people succeed in life academically, socially, and emotionally. You'll find out how different ways of teaching can help different students and develop your knowledge of a range of educational theories. You might work in the public or private sectors as a health promoter, policy analyst, support worker, or wellbeing adviser. Other roles may include being an advocate, an educational programme developer, or a trainer or facilitator.

**Health Psychology:** Learn about how to help people stay healthy, cope with illness, and recover from diseases. In Health Psychology, you focus on the ways the mind and body are connected, and look at how biological, cultural, environmental, psychological, social, and spiritual factors all influence people's health and illness. If you're interested in a career in the health sector, potential roles include counsellor, health promoter, health researcher, wellbeing adviser, or youth worker.

**Māori Psychology:** If you want your career to help bridge the gap between Western and Māori understanding of mental health and wellness, this could be the major for you. You'll look at a wide variety of knowledge from both areas, and focus on the importance of developing meaningful, ongoing relationships with whānau and the wider community, and in the sharing of knowledge in both directions. If you're interested in a career working with Māori or in relevant policy positions, this major will give you the skills and expertise you need.

**Mental Health: Principles and Applications:** If you're ready to make a real difference in the lives of others, this major is a great first step. You'll focus on the psychological problems that individuals can experience, and how we might intervene to address them. Career options include roles as an addictions worker, case worker, disability support worker, or staff welfare officer. While you'll need postgraduate qualifications to work as a professional psychologist, this major provides an excellent foundation for postgraduate study in areas such as clinical psychology or counselling psychology.

**Work and Organisational Psychology:** In a world where we dedicate a significant proportion of our lives to work, workplace happiness—and productivity—are extremely important for both employers and employees. In this major, you'll focus on human behaviour within an organisational setting, and take specialised courses from across employment relations, human resources, management, and psychology. You'll develop a solid understanding of people dynamics, so career options include roles as a consultant, human resources manager, health and safety adviser, learning and development adviser, or recruiter, or in change leadership or workplace wellbeing.

## SCHOOL SUBJECTS

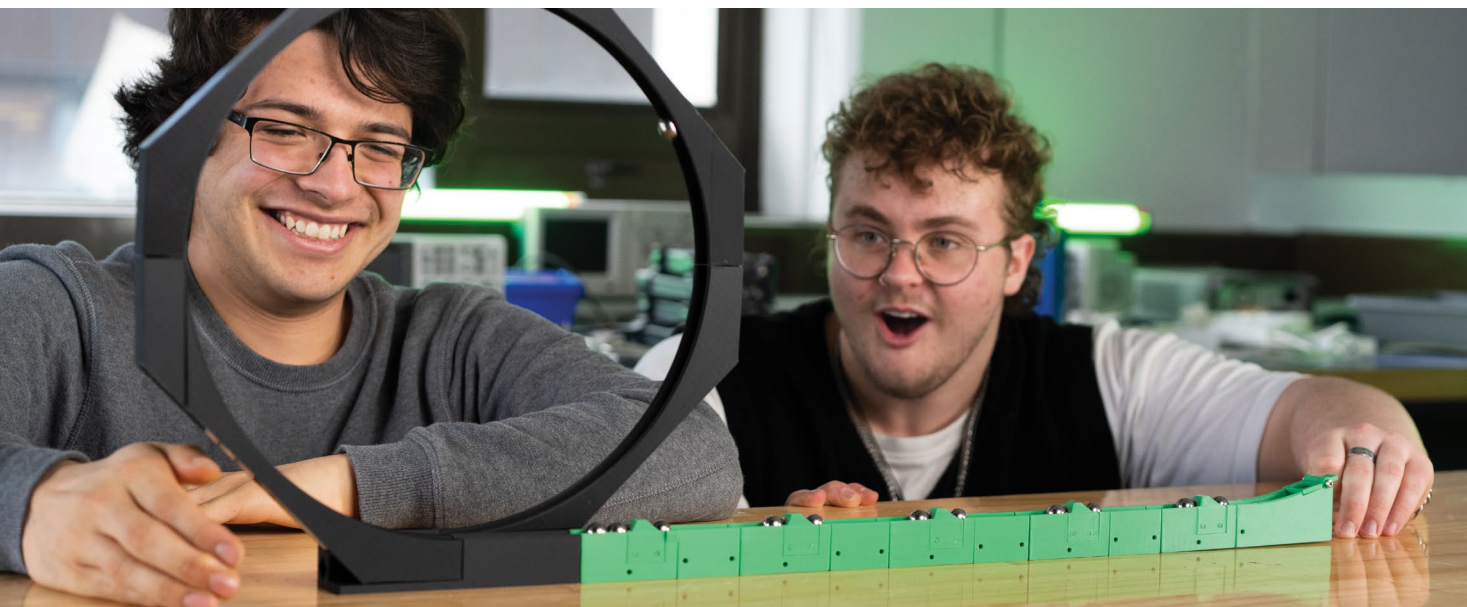
You can enrol in the BPsyc, or the Psychological Science major, no matter what you studied at school. Some experience with Statistics is recommended, although not required.

## POTENTIAL CAREERS

To find out more about where Psychology can take you, go to our website.

 [www.wgtn.ac.nz/careers](http://www.wgtn.ac.nz/careers)





# SCIENCE

Scientists are discoverers looking into the unknown. They are future thinkers, ready to tackle the world's biggest problems—from the climate emergency to antibiotic resistance. If you have a natural curiosity about the world around you and enjoy making new discoveries and solving problems, Science could be for you.

Our Bachelor of Science (BSc) is a varied, flexible degree. You'll be able to choose from a diverse group of courses that suit your interests and passions. When you complete your degree, you'll graduate with a qualification tailored for your future career.

Studying Science at Te Herenga Waka will take you beyond the lecture theatre, with hands-on laboratories, field trips, and

summer scholarship opportunities. In our modern labs and world-class facilities, you'll develop important skills in collecting, analysing, and understanding data. A BSc will also equip you with other highly employable skills, such as data management and critical thinking.

Wellington is the science capital of Aotearoa New Zealand, with the highest concentration of science organisations in the country. The University's science collaborations offer opportunities for summer research scholarships and work experience.



## KEY FEATURES

- ▶ Three years of full-time study.
- ▶ You can major in one or two subjects. Your first major must be a Science subject, and your second major can be a Science subject or a subject from another undergraduate degree.
- ▶ You can also choose to minor in an undergraduate subject area from the BSc or another undergraduate degree.
- ▶ The conjoint programme makes it possible to complete study for a BSc with another degree in four or more years.
- ▶ You will have the opportunity to participate in a range of practical experiences outside the classroom, including working in laboratories, going on field trips, and undertaking research activities.

## MAJORS

- |                                   |                         |
|-----------------------------------|-------------------------|
| ▶ Actuarial Science               | ▶ Environmental Science |
| ▶ Artificial Intelligence         | ▶ Environmental Studies |
| ▶ Biology                         | ▶ Information Systems   |
| ▶ Biotechnology                   | ▶ Geography             |
| ▶ Cell and Molecular Bioscience   | ▶ Geology               |
| ▶ Chemistry                       | ▶ Information Systems   |
| ▶ Computer Graphics and Games     | ▶ Marine Biology        |
| ▶ Computer Science                | ▶ Mathematics           |
| ▶ Data Science                    | ▶ Physics               |
| ▶ Development Studies             | ▶ Psychological Science |
| ▶ Ecology and Biodiversity        | ▶ Science Communication |
| ▶ Electronic and Computer Systems | ▶ Space Science         |
|                                   | ▶ Statistics            |

## OTHER SUBJECT

- ▶ Science in Society (minor)

## SCHOOL SUBJECTS

Although you don't need to have studied a subject at secondary school to take a major in that subject in the BSc, your school subjects can help you in your studies. Relevant school subjects include Biology, Calculus, Chemistry, Digital Technologies, Geography, Physics, and Statistics, depending on your major(s). Some majors do have specific NCEA Level 3 (or equivalent) entry requirements. However, if you're interested in a particular major but don't have sufficient credits, there are alternative pathways available—our student advisers can give you more information.

## POTENTIAL CAREERS

A BSc provides the ideal grounding for a range of careers, not just those in science. The analytical, communication, and problem-solving skills you will develop during your studies are highly valued by employers, giving you an edge in a competitive job market. If you do choose a science career, you can be confident in your career prospects—according to a report by the Australian Industry Group, around 75 percent of the fastest growing occupations require STEM (science, technology, engineering, and mathematics) skills.

A small selection of possible career options include actuary, astronomer, conservationist, geologist, hydrologist, laboratory technician, marine biologist, marine scientist, physicist, psychologist, policy analyst, researcher, teacher, and weather forecaster.

 [www.wgtn.ac.nz/careers](http://www.wgtn.ac.nz/careers)

 **FIND OUT MORE**



# EVENTS

## JOIN US FOR OPEN DAY

Our Open Day is on Friday 23 August 2024. Come along and check out our campuses, talk to students and staff, and find out about the different subjects you can study at the University. There's lots to do on Open Day, with subject information sessions, tours of our campuses and halls of residence, and opportunities to check out our student services, clubs, and extracurricular activities.

**i** [www.wgtn.ac.nz/open-day](http://www.wgtn.ac.nz/open-day)

## VISIT DURING SCHOOL HOLIDAYS

If you're thinking of visiting us during the school holidays, be sure to check out what's happening on campus. During the school holidays, we will have additional campus tours, hall tours, and UNI101 (intro to tertiary study) sessions on offer. You can also book in to get some one-to-one course advice with our Future Students team (see page 80).



# INFORMATION EVENINGS

Come along to a 2024 information evening and find out about study at Te Herenga Waka. Bring your whānau and learn about our study options, accommodation, admission requirements, scholarships, extracurricular activities, and student support. If you can't make it in person, join us online for a digital information session.

<b>Tuesday 7 May</b>	<b>Wellington</b>
<b>Thursday 9 May</b>	<b>New Plymouth</b>
<b>Wednesday 15 May</b>	<b>Palmerston North</b>
<b>Thursday 23 May</b>	<b>Nelson</b>
<b>Wednesday 29 May</b>	<b>Tauranga</b>
<b>Thursday 30 May</b>	<b>Hamilton</b>
<b>Wednesday 5 June</b>	<b>Hawke's Bay</b>
<b>Monday 10 June</b>	<b>Auckland</b>
<b>Tuesday 18 June</b>	<b>Christchurch</b>

**DIGITAL INFORMATION EVENINGS  
25–26 JUNE**





# CONNECT WITH US

Throughout the year, there are many ways for you to get support with planning your studies. Come and take a tour, book in to get some advice, and sign up for updates.

## TAKE A CAMPUS TOUR

Next time you're in Wellington, join a tour of our campuses. Kelburn campus tours run every Monday and Friday at 11 am. Te Aro campus tours run on Thursdays at 1 pm, and Pipitea campus tours are on Thursdays at 11 am. Book online or by phone.



## TAKE A HALL TOUR

Book a hall tour to learn more about our halls of residence and find out about events. You can visit the halls on Open Day, which is held in August each year (see page 78). You can also book a hall tour during school holidays, or contact the hall directly to make an appointment to visit at another time. If you're planning to see more than one hall on the same day, make sure you allow at least 40 minutes to cover the tour and the time to travel to the next hall.



## INTERNATIONAL STUDENTS

If you are an international student wanting to visit the University, get in touch with Te Kahupapa—Wellington University International. You can book in for tailored advice over the phone and we also hold international student events throughout the year.



## COURSE ADVICE AND PLANNING

Our Future Students team offers expert advice on joining Te Herenga Waka, choosing your subjects, and planning your degree. Book in for an appointment in person (Auckland and Wellington only), by phone, or over Zoom to discuss your study plans at any point in the year.



## STAY IN TOUCH

Sign up to receive updates on events and key dates via email.

Follow us on social media

 [www.facebook.com/vicuniwgtm](https://www.facebook.com/vicuniwgtm)

 [www.wgtn.ac.nz/instagram](https://www.wgtn.ac.nz/instagram)



# THE UNIVERSITY'S CAMPUSES AND HALLS





📞 0800 04 04 04

✉️ [future-students@vuw.ac.nz](mailto:future-students@vuw.ac.nz)

🌐 [www.wgtn.ac.nz/study](http://www.wgtn.ac.nz/study)